



# POWR-SCRUB

## Classic All-Metal Single-Speed Floor Machines

Item# C131-7, C171HD, and C201HD



1.5 HP Motor Rating



175 RPM



50-Ft. Power Cord

**13" 17"  
20"**

Sizes Available

**RUGGED, ALL-METAL FLOOR MACHINES.  
HIGH POLISH CHROME FINISH IS CHIP AND  
CORROSIVE RESISTANT.**

**DURABLE & DEPENDABLE**

All-steel, triple planetary gear box

**USES PADS OR BRUSHES**

Pad driver sold separately

**EASY TO MANEUVER**

1.5 HP guided by anti-fatigue  
handle grips

**Powr-Flite®**

# SPECS:

MODEL
C131-7
DESCRIPTION
13", 1.5 hp, 175 RPM
CLEANING PATH
13"
WEIGHT
68 lbs.
MOTOR
1.5 HP
RUNNING AMPS
10
POWER CORDS
50 ft.
MODEL
C171HD
DESCRIPTION
17", 1.5 hp, 175 RPM
CLEANING PATH
17"
WEIGHT
100 lbs.
MOTOR
1.5 HP
RUNNING AMPS
10
POWER CORDS
50 ft. UL listed 14/3 STW-A
MODEL
C201HD
DESCRIPTION
20", 1.5 hp, 175 RPM
CLEANING PATH
20"
WEIGHT
105 lbs.
MOTOR
1.5 HP
RUNNING AMPS
15
POWER CORDS
50 ft. UL listed 14/3 STW-A



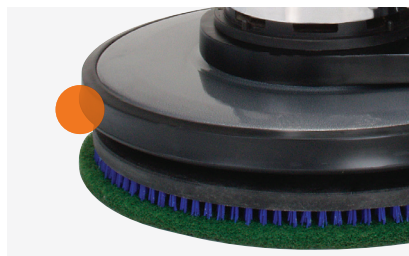
## CHOOSE PREFERRED CLEANING PATH

Available in 13", 17" or 20" models.



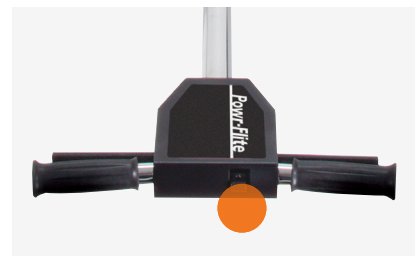
## CLASSIC LOOK

High-polish chrome finish keeps the Classic looking new longer.



## NON-MARKING BUMPERS

Full surround non-marking bumpers help prevent damage to walls and furniture



## EASY TO USE

The thumb activated safety interlock switch prevents accidental start-ups.



## ADD-ON ACCESSORIES

Pad driver sold separately. Optional 4 gallon solution tank. (Item# FM91).