

Powr-Flite

COMMERCIAL FLOOR CARE EQUIPMENT

OPERATOR'S MANUAL & PARTS LIST

10 GALLON WET/DRY VAC

MODEL PF59



WARNING: OPERATOR MUST READ AND UNDERSTAND THIS MANUAL COMPLETELY BEFORE OPERATING THIS EQUIPMENT.

TABLE OF CONTENTS

Safety Instructions and Warnings.....	3
Grounding Instructions	4
Unpacking and Checking Carton Contents.....	5
General Assembly Instructions	6
Dry Vacuuming Operation	8
Liquid Vacuuming Operation.....	9
Maintenance	10
Installing Hepa Filter And Pre-filter	10
Installing & Cleaning Foam Sleeve Filter.....	11
When To Change Filters	12
Troubleshooting	12
Parts - Exploded View	13

Thank you for purchasing this HEPA vacuum cleaner. Feel confident that with Powr-Flite you are obtaining a high quality product engineered for optimal performance. This vacuum is capable of picking up dry materials as well liquids.

FOR YOUR SAFETY CAREFULLY READ AND UNDERSTAND ALL INSTRUCTIONS.

SAFETY INSTRUCTIONS & WARNINGS

IMPORTANT SAFETY PRECAUTIONS

Read and understand this owner's manual and all labels on the Wet/Dry Vacuum cleaner before operating. Safety is a combination of common sense, staying alert and knowing how your vacuum works. Use this HEPA Filtered Vacuum only as described in this manual. To reduce the risk of personal injury or damage to your HEPA Filtered Vacuum, use only recommended accessories.

For household or commercial use.

SAVE THIS MANUAL FOR FUTURE REFERENCE

When using an electrical appliance, basic precautions should always be followed including the following:

WARNING: TO REDUCE THE RISK OF FIRE, ELECTRIC SHOCK OR INJURY:

- Do not run vacuum unattended.
- Do not vacuum, or use this HEPA Filtered Vacuum near flammable liquids, gases, or explosive vapors like gasoline or other fuels, lighter fluids, cleaners, oil-based paints, natural gas, hydrogen, or explosive dusts like coal dust, magnesium dust, grain dust, or gun power. Sparks inside the motor can ignite flammable vapors or dust.
- Do not vacuum anything that is burning or smoking, such as cigarettes, matches, or hot ashes.
- Keep cord away from heated surfaces.
- Do not expose to rain. Store indoors.
- Do not unplug by pulling on cord. To unplug, grasp the plug, not the cord.
- Do not use with damaged cord, plug or other parts.
- If vacuum is not working as it should, has been dropped, damaged, left outdoors, or dropped into water, return it to a service center.
- Do not pull or carry by cord, use cord as handle, close a door on cord, or pull cord around sharp edges or corners.
- Do not run the HEPA Filtered Vacuum over cord.
- Do not handle plug or the HEPA Filtered Vacuum with wet hands.
- To reduce the risk of health hazards from vapors or dusts, do not vacuum toxic materials.
- Do not store near hazardous materials.
- Do not use this HEPA Filtered Vacuum with a torn filter or without the filter installed except when vacuuming liquids as described in the operation section of this manual.
- Do not allow to be used as a toy. Close attention is necessary when used by or near children.
- To reduce the risk of injury from accidental starting, unplug power cord before changing or cleaning filter.
- Do not leave Wet/Dry Vacuum unattended when plugged in. Unplug from outlet when not in use and before servicing.
- Turn off Wet/Dry Vacuum before unplugging.
- Do not put any object into ventilation openings. Do not vacuum with any ventilation openings blocked; keep free of dust, lint, hair or anything that may reduce air flow.
- Keep hair, loose clothing, fingers, and all parts of body away from openings and moving parts.
- To reduce the risk of falls, use extra care when cleaning on stairs.
- When using for HEPA EPA RRP cleanup tasks, use only certified HEPA filter.
- Even when used with a HEPA filter, extremely small particles may pass through the filter, always wear appropriate protective safety equipment.

WARNING:

IF FILTERS ARE CONTAMINATED OR HAVE BEEN USED, THEY MUST BE DISPOSED OF PROPERLY, PRIOR TO PERFORMING WET VACUUMING OPERATIONS.

CONNECT TO A PROPERLY GROUNDED OUTLET ONLY!

See Grounding Instructions

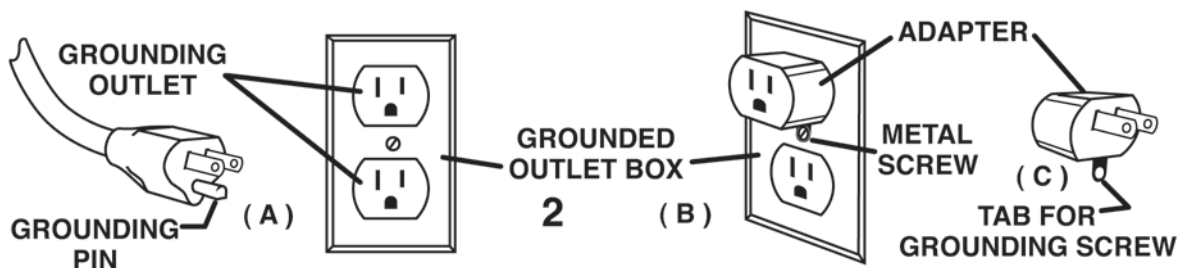
GROUNDING INSTRUCTIONS

This vacuum must be grounded! Grounding is a safety measure to reduce the risk of electrical shock to the operator should the machine malfunction or stop working. Grounding provides the path of least resistance for electric current and will trip the circuit breaker, stopping the flow of electricity.

This unit is equipped with a cord that has an equipment-grounding conductor and grounding plug. The plug must be inserted in an appropriate outlet that is properly installed and grounded in accordance with all local codes and ordinances. Cutting off the ground wire or using a cord that is not equipped with a ground plug will void the warranty on the unit. The manufacturer will accept NO liability associated with the unit.

⚠ WARNING! Improper connection of the equipment-grounding conductor can result in a risk of electric shock. Check with a qualified electrician or service person if you are in doubt as to whether the outlet is properly grounded. Do not modify the plug provided with the appliance. If it will not fit the outlet, have a proper outlet installed by a qualified electrician.

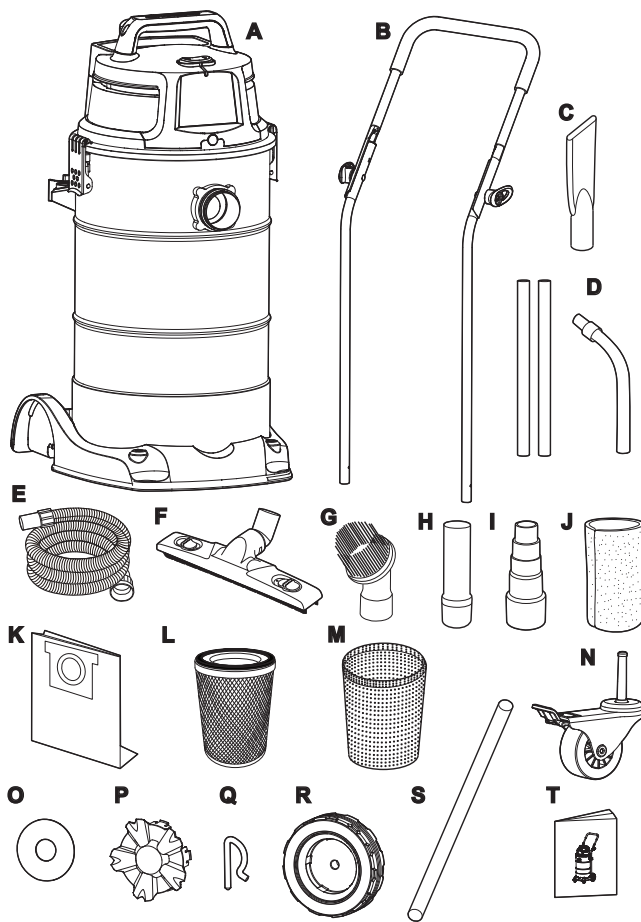
The vacuums are for use on a nominal 120-volt circuit, and have a grounded plug that looks like the plug illustrated in Figure A. A temporary adapter that looks like the adapter illustrated in Figure B and C may be used to connect this plug to a 2-pole receptacle as show in Figure B if a properly grounded outlet is not available. The temporary adapter should be used only until a properly grounded outlet (Figure A) can be installed by a qualified electrician. The green colored rigid ear, lug, or the like, extending for the adapter must be connected to a permanent ground such as a properly grounded outlet box cover. Whenever the adapter is used, it must be held in place by a metal screw.



Note: In Canada, the use of a temporary adapter is not permitted by the Canadian Electrical Code.

⚠ WARNING! The replacement or repair of damaged wiring should only be performed by a qualified electrician or service engineer from the manufacturer or authorized service center.

UNPACKING AND CHECKING CARTON CONTENTS

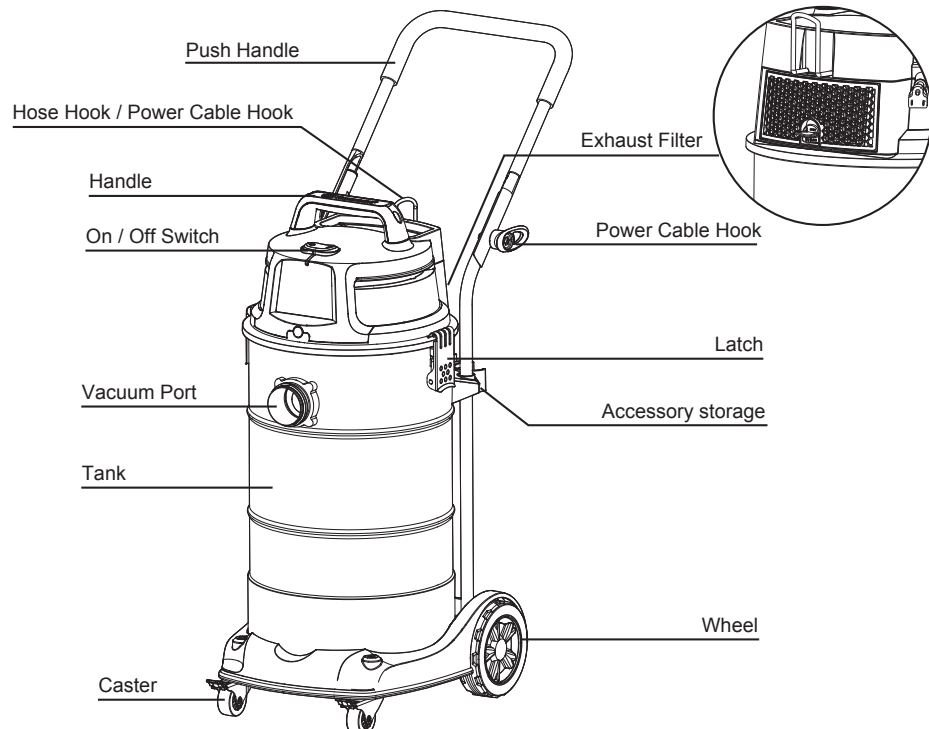


Remove entire contents of carton. Check each item against the carton contents list.

Carton contents lists

Key	Description	QTY.
A	Vac Assembly	1
B	Push/Pull Handle	1
C	Crevice Nozzle	1
D	Extension Wands	3
E	Hose	1
F	Floor Squeegee	1
G	Horse Hair Round Brush	1
H	Accessory Adaptor	1
I	Adaptor For Power Tools	1
J	Foam Sleeve	1
K	Dust Collection Bag	1
L	HEPA Cartridge Filter	1
M	Pre-Filter	1
N	Front Caster	2
O	Washer	4
P	Hub Cap	2
Q	'R' (Lock Pin)	2
R	Rear Wheel	2
S	Wheel Axle	1
T	Operator's Manual	1

NOTE: The hose and accessories for these vacuums are 1.5 inch (38 mm) diameter.





WARNING!

DO NOT PLUG IN POWER CORD TO POWER OUTLET, MAKE SURE PLUG IS DISCONNECTED BEFORE ASSEMBLING THE WET/DRY VAC.

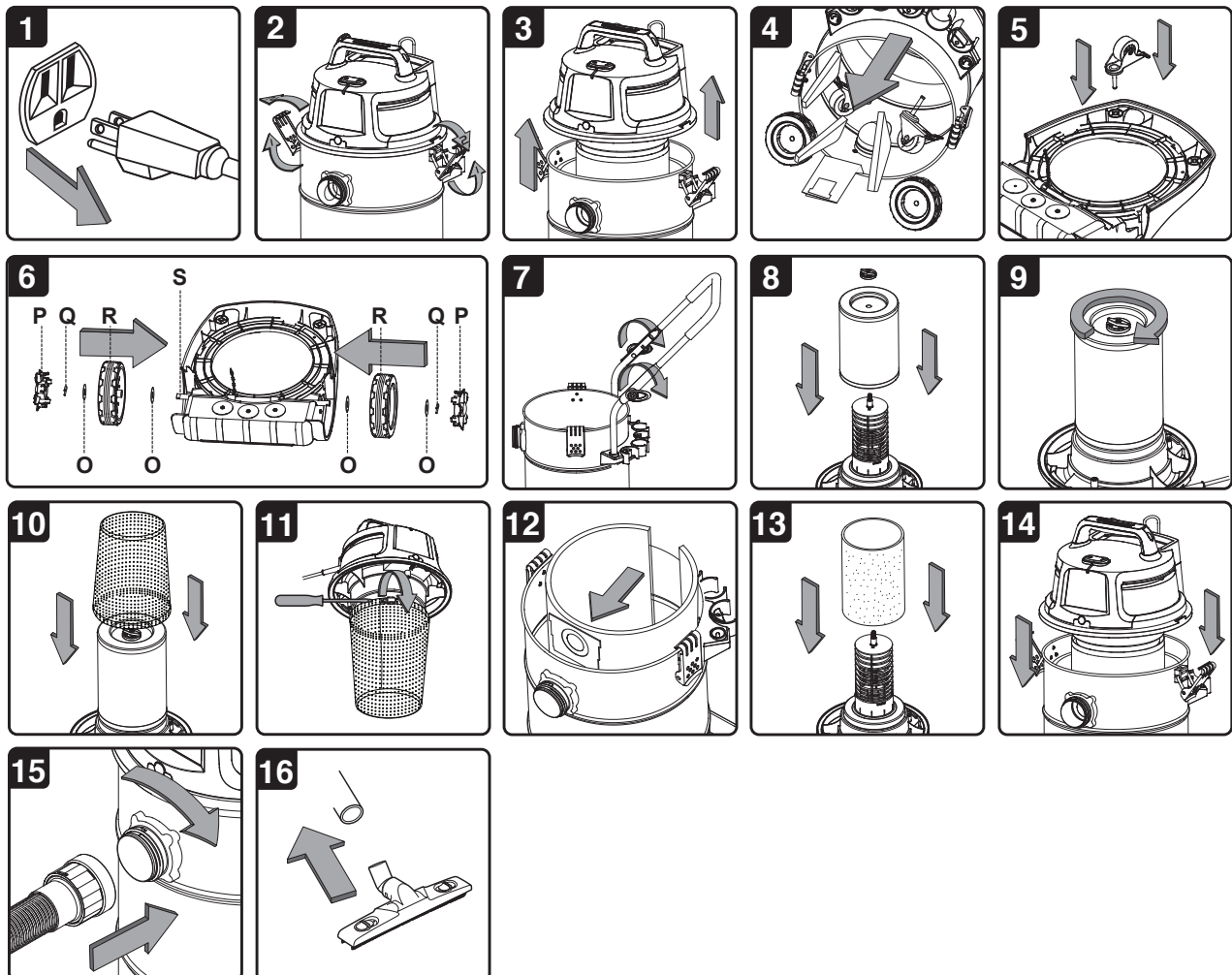
The HEPA filtered vacuum is supplied with a certified HEPA filter that has been lot tested by an independent lab to IEST-RP-CC001 that meet the EPA definition of a HEPA vacuum (100% leak tested to 99.97% @ 0.3 micron Efficiency). It can be used for lead renovation work under the EPA's lead RRP rule. It can be used to pick up materials like sawdust and gravel, as well as the ultra fine materials like drywall dust and cold fireplace ash.

CAUTION:

This vacuum has been specifically designed to clean up hazardous dust. Special filters reduce the incidence of airborne dust that would be created by other methods of cleaning. During the removal of hazardous dust, DO NOT sweep, scoop, shovel or in any manner handle other than by vacuuming. DO NOT at any time attempt to remove, substitute or by any other means change the filters in the vacuum. Use only manufacturer's approved vacuum filters and filters bags. Before attempting to use or before cleaning with this vacuum, be sure that you fully understand the instructions for setting up or cleaning/changing filters. Any health hazards associated with use of this vacuum in conjunction with the removal of hazardous material has not been investigated by Underwriters Laboratories, Inc.

GENERAL ASSEMBLY INSTRUCTIONS

A Philips head screw driver is required.



UNPACKING YOUR WET/DRY VACUUM & GENERAL ASSEMBLY

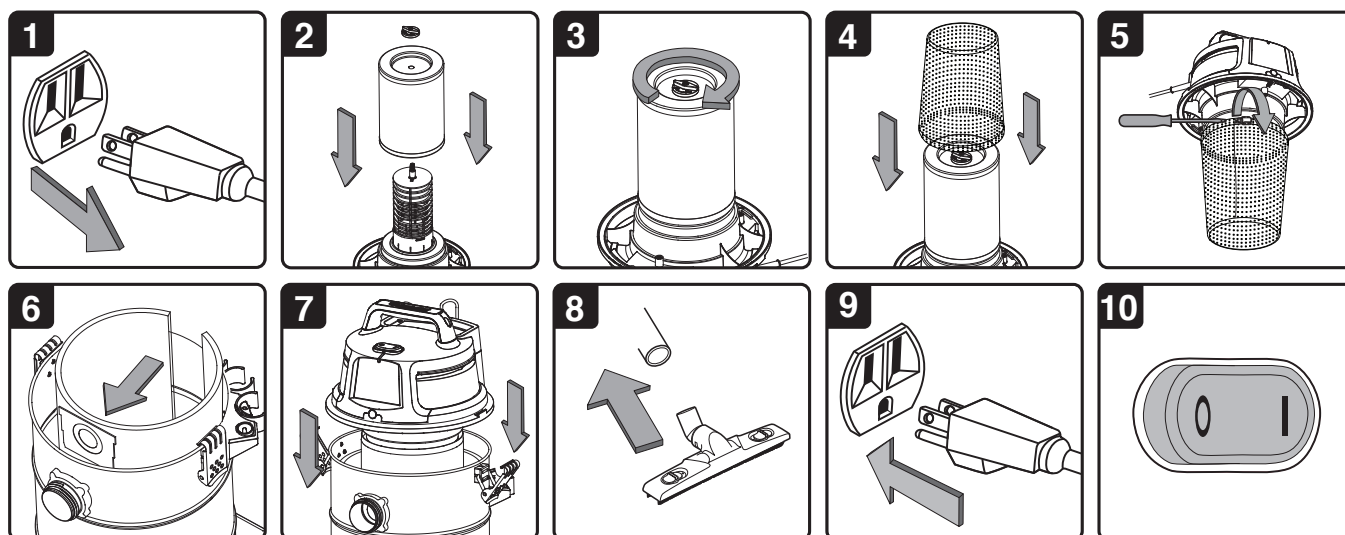
1. Verify that the power cord is disconnected from the outlet. (fig. 1)
2. Undo the latches. (fig. 2)
3. Lift the power head off the tank. (fig. 3)
4. Remove the contents from inside the tank, make sure you have all contents as listed on page 6. (fig. 4)
5. Turn the tank upside down and insert the two caster feet into the front slots on the base. Apply downward pressure to each caster. Casters will “snap” into place when installed properly. Verify that the casters are mounted correctly. (fig. 5)
6. The base of the push handle will need to be fastened to the machine with the two supplied screws prior to securing the wheels onto the unit. Attach the top part of the handle to the base handles.
7. Insert the wheel axle into the base. Insert washer onto the axle followed by rear wheel and insert washer again. Insert the ‘R’ locking pin into the hole on the end of the axle to lock the wheel. Snap the hub cap on to the wheel. Repeat the same steps at the other end of the axle. (fig. 6)
8. Spread the push / pull main handle. Spin the power cable hook to fix the handle in place. (fig. 7)
9. Your vacuum comes ready for dry vacuum cleaning. If HEPA filter and pre-filter are not installed refer to page 10 for filter installation. (fig. 8 & 9)
10. Fit collection bag flange onto the inlet stub, taking care not to damage the bag. (fig. 12)
11. For wet vacuum cleaning, remove the pre-filter, HEPA filter and collection bag, install the supplied foam filter. (fig. 13) See page 11 for filter installation.
12. Place the power head back on the tank, aligning the top section with the latches, and hook the latches. (fig. 14)
13. Insert the locking end of the hose into the vacuum port and turn to lock in to place. (fig. 15)
14. Choose the desired accessories and push onto the suction tube. (fig. 16)

WARNING: IF FILTERS ARE CONTAMINATED OR HAVE BEEN USED, THEY MUST BE DISPOSED OF PROPERLY, PRIOR TO PERFORMING WET VACUUMING OPERATIONS.

WARNING: BE SURE TO READ, UNDERSTAND, AND APPLY INFORMATION, ENTITLED 'SAFETY INSTRUCTIONS & WARNINGS'. DO NOT VACUUM IN AREAS WITH FLAMMABLE GASES, VAPORS, OR EXPLOSIVE DUSTS IN THE AIR. FLAMMABLE GASES OR VAPORS INCLUDE BUT ARE NOT LIMITED TO; LIGHTER FLUID, SOLVENT TYPE CLEANERS, OIL-BASE PAINTS, GASOLINE, ALCOHOL OR AEROSOL SPRAYS. EXPLOSIVE DUSTS INCLUDE BUT ARE NOT LIMITED TO; COAL, MAGNESIUM, GRAIN OR GUN POWDER. TO REDUCE THE RISK OF HEALTH HAZARDS FROM VAPORS OR DUST, DO NOT VACUUM TOXIC MATERIALS.

CAUTION: NEVER operate the vacuum cleaner without all of the filters installed. This includes the HEPA filter, pre-filter and collection bag. Motor damage, loss of operating efficiency and recirculation of hazardous material into the work area will take place if not installed.

DRY-VACUUM OPERATION



SET-UP:

DRY VACUUMING

1. Verify that the power cord is disconnected from the outlet. (fig. 1)
2. In order to prepare your vacuum for dry vacuuming, verify that the HEPA filter is securely mounted. With power head removed and in upside down position, make sure the filter is pushed in until it stops against the power head and the rubber flat washer and retainer are installed. (fig. 2 & 3)
3. Slide the pre-filter onto the assembled HEPA filter. Tighten the band clamp on the pre-filter with a screwdriver to ensure. (fig. 4 & 5) (Your Wet/Dry Vacuum comes with the HEPA filter and pre-filter pre-installed, if not, see page 10 for installation instructions.)
4. Optional, for improved dust collecting, fit collection bag flange onto the inlet stub, taking care not to damage the bag. (fig. 6)
5. Place the power head back on the container, and secure it in place using the latches. (fig. 7)

OPERATION:

OPERATING INSTRUCTIONS: DRY VACUUMING

1. Insert the locking end of the hose into the vacuum port and lock in place. Push the required attachment onto the free end of the hose or extension. (fig. 8)
2. Plug in the power cord into the outlet. (fig. 9)
3. Turn the motor on by turning the switch to the 'I' ON position. (fig. 10)
4. Once you have completed vacuuming, flip the switch to the 'O' OFF position and unplug the power cord from the outlet.

O = OFF I = ON

WARNING: IF FILTERS ARE CONTAMINATED OR HAVE BEEN USED, THEY MUST BE DISPOSED OF PROPERLY, PRIOR TO PERFORMING WET VACUUMING OPERATIONS.

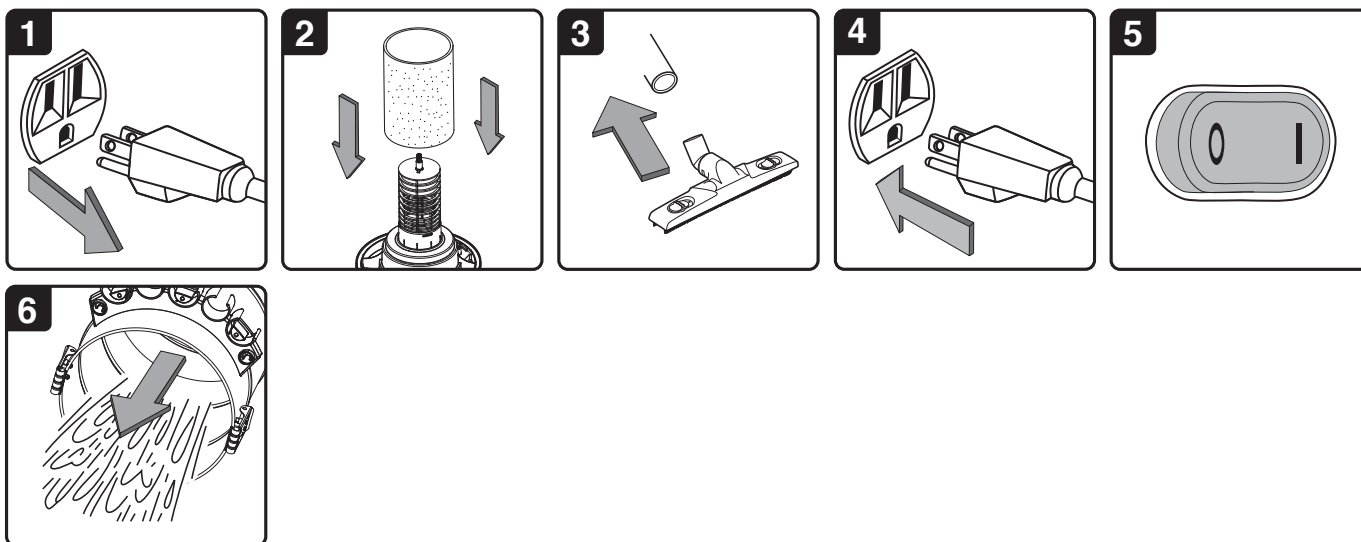
DO NOT USE THE HEPA FILTER FOR LIQUID VACUUMING.

Hazardous materials must be disposed of properly. NEVER throw contaminated debris in your usual trash receptacle. Place debris in a OSHA approved poly bag or container marked with HAZARDOUS MATERIAL warning and dispose in accordance with your local Hazardous Waste Regulations.

LIQUID VACUUM OPERATION

WARNING: BE SURE TO READ, UNDERSTAND, AND APPLY INFORMATION, ENTITLED 'SAFETY INSTRUCTIONS & WARNINGS'. DO NOT VACUUM IN AREAS WITH FLAMMABLE GASES, VAPORS, OR EXPLOSIVE DUSTS IN THE AIR. FLAMMABLE GASES OR VAPORS INCLUDE BUT ARE NOT LIMITED TO; LIGHTER FLUID, SOLVENT TYPE CLEANERS, OIL-BASE PAINTS, GASOLINE, ALCOHOL OR AEROSOL SPRAYS. EXPLOSIVE DUSTS INCLUDE BUT ARE NOT LIMITED TO; COAL, MAGNESIUM, GRAIN OR GUN POWDER. TO REDUCE THE RISK OF HEALTH HAZARDS FROM VAPORS OR DUST, DO NOT VACUUM TOXIC MATERIALS.

WARNING: DO NOT PLUG IN POWER CORD TO POWER OUTLET, MAKE SURE PLUG IS DISCONNECTED BEFORE ASSEMBLING THE WET/DRY VAC



SET-UP:

1. Verify that the power cord is disconnected from the outlet. (fig. 1)
2. Remove all filters and dispose of properly.
3. Rinse out the inside of tank to remove any loose debris and dispose of liquid in suitable container.
4. Then carefully install the foam sleeve filter over the filter cage and place the power head back on the tank. (fig. 2)
See filter installing instructions on page 11.

WARNING: IF FILTERS ARE CONTAMINATED OR HAVE BEEN USED, THEY MUST BE DISPOSED OF PROPERLY, PRIOR TO PERFORMING WET VACUUMING OPERATIONS.

OPERATING INSTRUCTIONS: WET VACUUMING

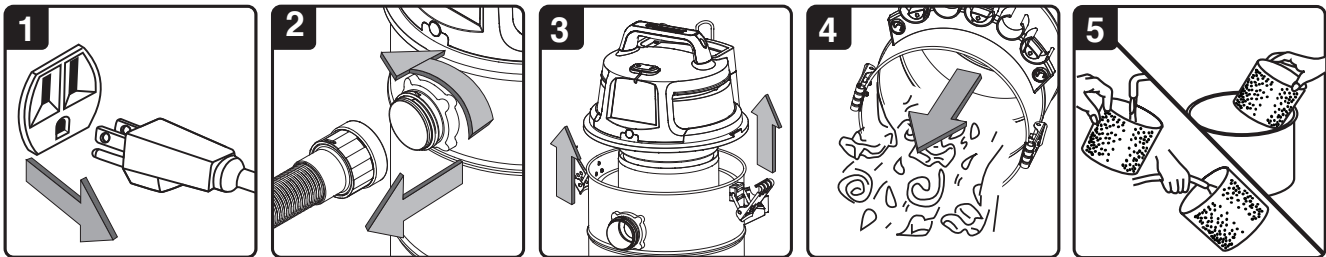
1. Fit the desired nozzle to the vacuum hose. (fig. 3)
2. Verify that the switch is in the 'O' OFF position before plugging the power cord into the outlet. (fig. 4)
3. Turn the motor on by flipping the switch to the 'I' ON position. (fig. 5)
4. After use, empty the tank into a suitable receptacle.

IMPORTANT!

When vacuuming large quantities of liquids, do not immerse the nozzle completely in the liquid; leave a gap at the tip of the nozzle opening to allow air inflow. The machine is fitted with a float valve that stops the suction action when the container reaches its maximum capacity. You will notice an increase in motor speed. When this happens, turn off the machine, disconnect from power supply, and drain the liquid into a suitable receptacle or drain. To continue vacuuming, refit the container with the drain cap. After wet vacuuming, turn the machine off and remove plug from power supply. Empty the container, clean and dry the inside and outside before storage.

REMEMBER! The foam filter must be removed after wet vacuuming, and the HEPA filter must be reinstalled before dry vacuuming again.

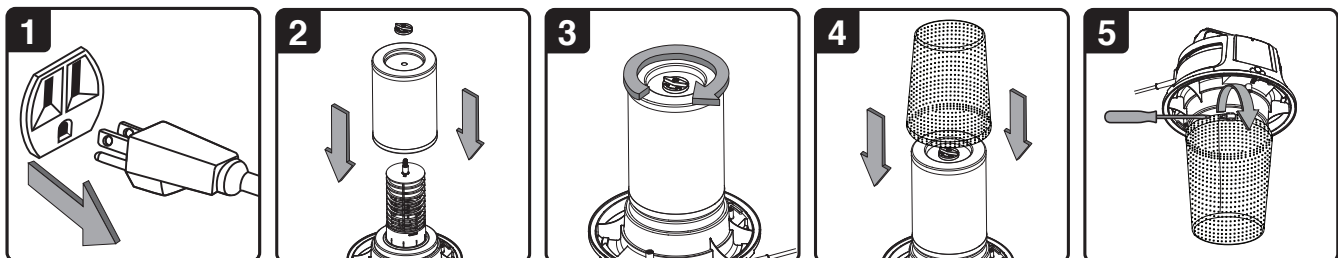
MAINTENANCE



WARNING: ALWAYS DISCONNECT THE PLUG FROM THE POWER OUTLET BEFORE REMOVING THE POWER HEAD FROM THE CONTAINER.

1. Verify that the power cord is disconnected from the outlet. (fig. 1)
2. Disconnect the hose from the vacuum. (fig. 2)
3. Undo the latches and remove the power head from the container. (fig. 3)
4. Clear all dirt or debris from the container and hose. (fig. 4)
5. Clean the foam filter by washing it with water and mild soap. (fig. 5)
6. Check the hose, attachments, and power cord to verify that they have not been damaged.

INSTALLING HEPA FILTER AND PRE-FILTER



Installing HEPA Filter and Pre-Filter

1. Verify that the power cord is disconnected from the outlet. (fig. 1)
2. Remove power head and place in upside down position.
3. Install the HEPA filter over the filter cage with the flat end of the filter towards the vacuum power head. Carefully push filter in until it stops against the power head. (fig. 2)
4. Place filter retainer on top of cartridge filter over the raised lip and tighten down by turning retainer clockwise, do not over tighten. (fig. 3)
5. Slide the pre-filter onto the assembled HEPA filter, over the lower end cap. Tighten the band clamp on the pre-filter with a screwdriver to ensure proper installation. (fig. 4 & 5)

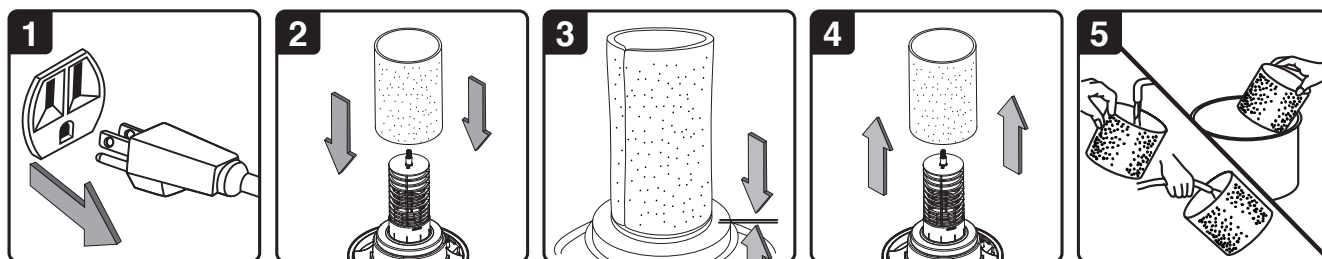
Removing HEPA Filter and Pre-Filter

1. Loosen the band clamp on the pre-filter with a screwdriver, and remove the pre-filter from the HEPA filter.
2. Unlock and remove the filter retainer by turning retainer counter clockwise.
3. Carefully hold and pull the HEPA filter up for removal.
4. Install the HEPA filter into place as instructed above in steps 2 and 3 of Installing HEPA filter.
5. Wet filter should be removed and allowed to air dry for 24 hours before installing onto the filter cage.

IMPORTANT! Change the cartridge filter regularly for best performance. ALWAYS USE THE HEPA FILTER FOR DRY VACUUMING. If the machine is used for dry vacuuming without the HEPA filter and retainer attached, the motor will burn out and the warranty will be voided.

NOTICE! The HEPA cartridge filter included is made of high quality materials designed to stop small dust particles. The HEPA cartridge filter should be used for dry pick-up only. A dry HEPA cartridge filter is necessary to pick up dust. If the HEPA cartridge filter is wet, it will clog quickly and be very difficult to clean. Handle the HEPA cartridge filter carefully when removing it or replacing it. Check the HEPA cartridge filter for tears or small holes, a small hole can let dust pass through and out of the cleaner. Do not use a HEPA cartridge filter with holes or tears, replace it immediately.

INSTALLING & CLEANING FOAM SLEEVE FILTER



Installing Foam Sleeve Filter

1. Verify that the power cord is disconnected from the outlet. (fig. 1)
2. Remove power head and place in upside down position. Follow instructions to remove cloth filter. (pg.10)
3. Carefully slide foam sleeve filter down over the filter cage making sure the whole cage is covered. (fig. 2 & 3)
4. Replace the power head on to the container.

Cleaning Foam Sleeve Filter

1. With the removed power head in the upside down position, carefully remove foam sleeve filter. (fig. 4)
2. Use a mild soap and water solution to wash foam sleeve filter and rinse with clean water. (fig. 5)
3. Allow filter to air dry before installing and using again.

WHEN TO CHANGE FILTERS

Change the collection bag

When the collection bag is 3/4 full, it MUST be replaced. Excessive over filling of this bag makes it difficult to remove from the vacuum tank and can result in breakage and spills. The collection bag comes equipped with a quick closing flap. When collection bag becomes 3/4 full, turn off vacuum and slowly remove the collection bag from the tank until the opening in the collection bag is clear of the tank. Pull the closure slide up on the collection bag, which will close the opening. Hazardous materials must be disposed of properly. NEVER throw contaminated debris in your usual trash receptacle. Place closed collection bag in an OSHA approved poly bag or container marked with HAZARDOUS MATERIAL warning and dispose in accordance with your local Hazardous Waste Regulations.

Change the pre-filter

The pre-filter should be replaced with every fifth change of collection bag and whenever there is damage or a visible collection of debris on the outside of the filter.

Change the HEPA filter

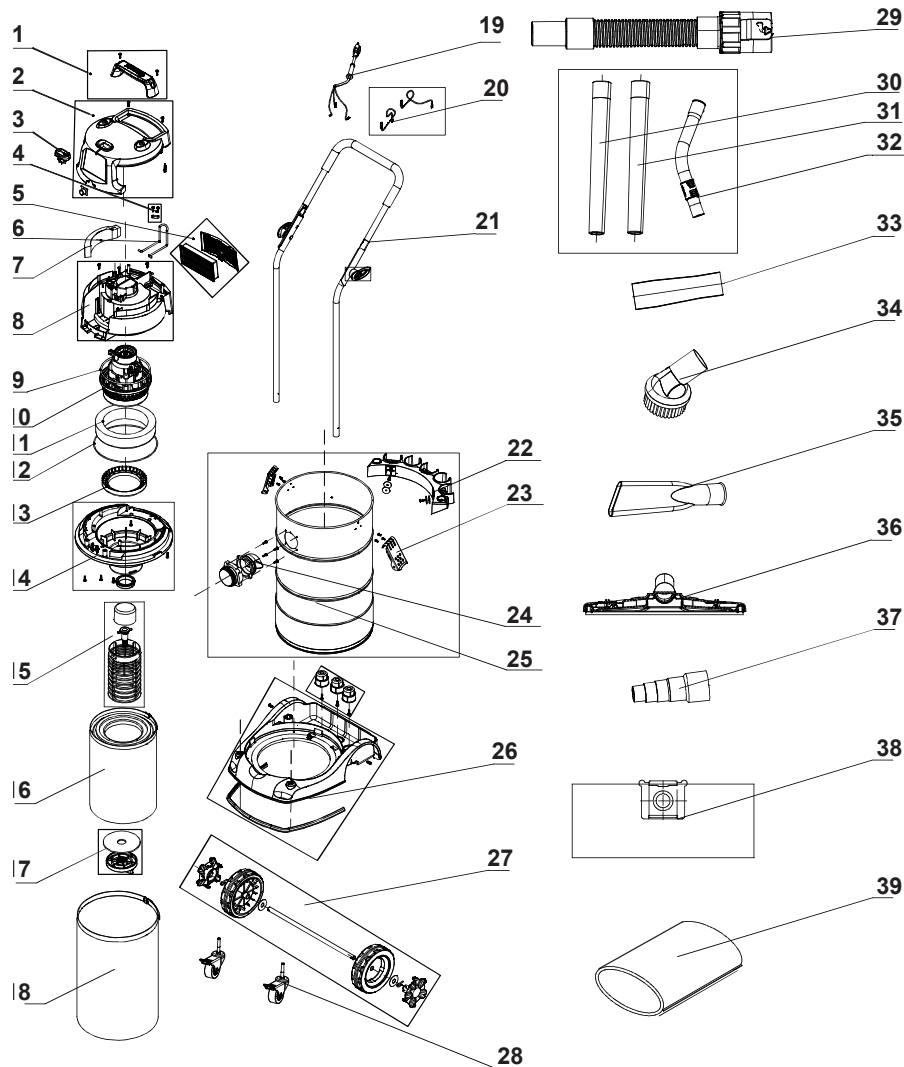
Replace the HEPA filter when loss of vacuum continues to occur after you have checked for an obstructions in the hose or wand. Also, install a new collection bag and pre-filter.

TROUBLESHOOTING

WARNING: TO REDUCE THE RISK OF ELECTRIC SHOCK-UNPLUG BEFORE TROUBLESHOOTING.

Symptom	Possible Causes	Corrective Action
Vacuum will not operate.	1) No power supply. 2) Faulty power cord. 3) Tank full.	1) Check power supply – cord, breakers, fuses. 2) Unplug and check the power cord. If damaged, have it repaired by a professional. 3) Empty tank.
Dust comes out from motor cover.	1) The cartridge filter is missing or damaged. 2) HEPA cartridge filter is not installed correctly.	1) Attach or replace cartridge filter. 2) Please make the screw down to fix the HEPA cartridge filter.
Reduced efficiency and motor/speed vibration.	1) There is a blockage in the nozzle, hose, or the container inlet. The cartridge filter is clogged by fine dust.	1) Check nozzle, hose and container inlets for blockage. Take off the filter and clean it. Or install a new cartridge filter.

PARTS - EXPLODED VIEW



PF59 Parts List		
Key	PF Part No.	Description Line
1	WD400	Handle Assembly
2	WD401	Top Cover
3	WD402	Switch
4	WD403	Cord Clamp Assembly
5	WD404	Exhaust Filter
6	WD405	Cord Hook
7	WD406	Sponge Filter
8	WD407	Mid Cover Assembly
9	WD408	Motor Seal
10	WD409	Motor Assembly
11	WD410	Foam
12	WD411	Lid Seal
13	WD412	Seal String
14	WD413	Lid Assembly
15	WD414	Filter Cage and Float Assembly
16	WD415	Hepa High Efficiency Cartridge Filter
17	WD416	HEPA Cartridge Filter Retainer
18	WD417	HEPA Pre Filter
19	WD418	Power Cord Assembly

PF59 Parts List		
Key	PF Part No.	Description Line
20	WD419	Inner Cable
21	WD420	Transport Handle Assembly
22	WD421	Accessory Storage
23	WD422	Latch Assembly
24	WD423	Vacuum Port Assembly
25	WD424	Stainless Steel Tank
26	WD425	Base Assembly
27	WD426	Wheel Assembly
28	WD427	Locking Caster
29	WD428	1-1/2" Crush/Kink Resistant Hose
30	WD429	1 1/2" Metal Extension Wand Lower
31	WD430	1 1/2" Metal Extension Wand Upper
32	WD431	1 1/2" Metal Elbow
33	WD432	1 1/2" Accessory Adaptor
34	WD433	1-1/2" Round Brush
35	WD434	1 1/2" Crevice Tool
36	WD435	1 1/2" Floor Squeegee/Brush 15"
37	WD436	Power Tool Adaptor
38	WD437	High Efficiency Collection Bag (2 PK)
39	WD438	Foam Sleeve Filter

WARRANTY

The manufacturer warrants to the original purchaser that products manufactured are free from defects of workmanship and material, provided such goods are installed, operated and maintained in accordance with written manuals or other instructions for a period of 5 years from date of purchase on housings and frame, 1 year on pump, vac motor, parts and workmanship. In case you as our customer, meet any trouble with your machine, contact your Powr-Flite representative who will be happy to be of service to you and will take care of the warranty settlement.

NOTE: Alterations and changes made to the machine without written approval of the manufacturer and use of unapproved spare parts will not be covered by warranty.

Powr-Flite[®]

A Tacony Company
3101 Wichita Court • Ft. Worth, TX 76140-1755
1-800-880-2913 • Fax: 1-817-551-0719 • www.Powr-Flite.com