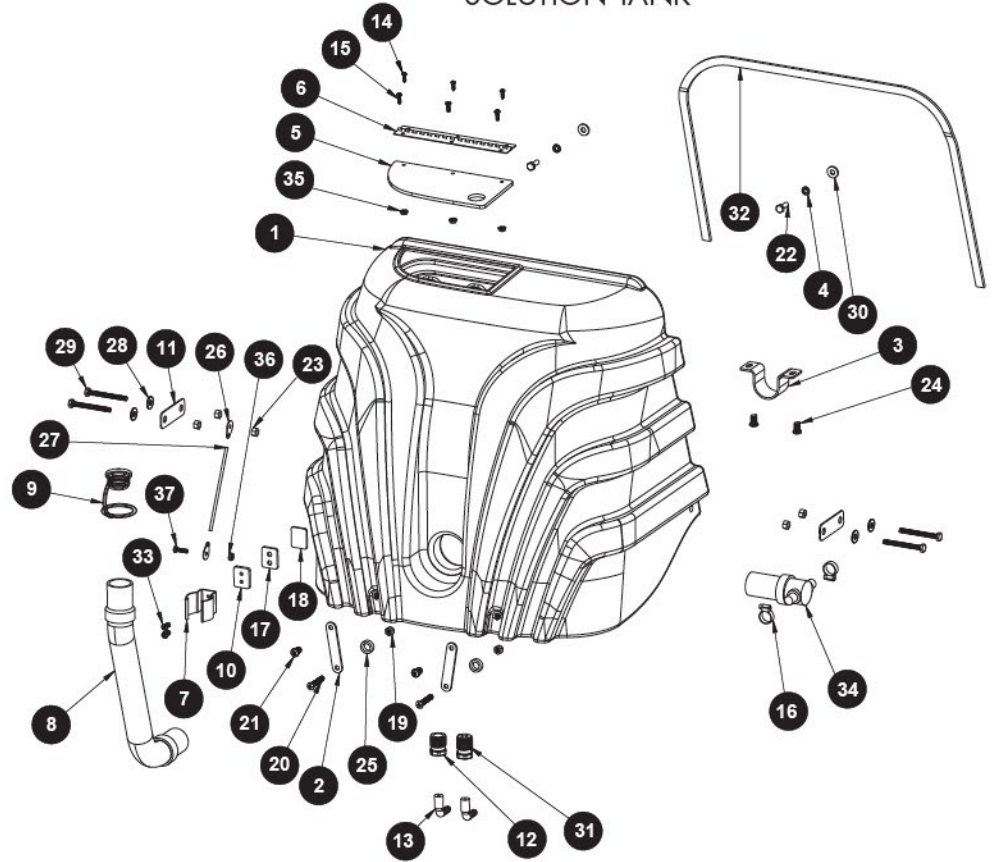
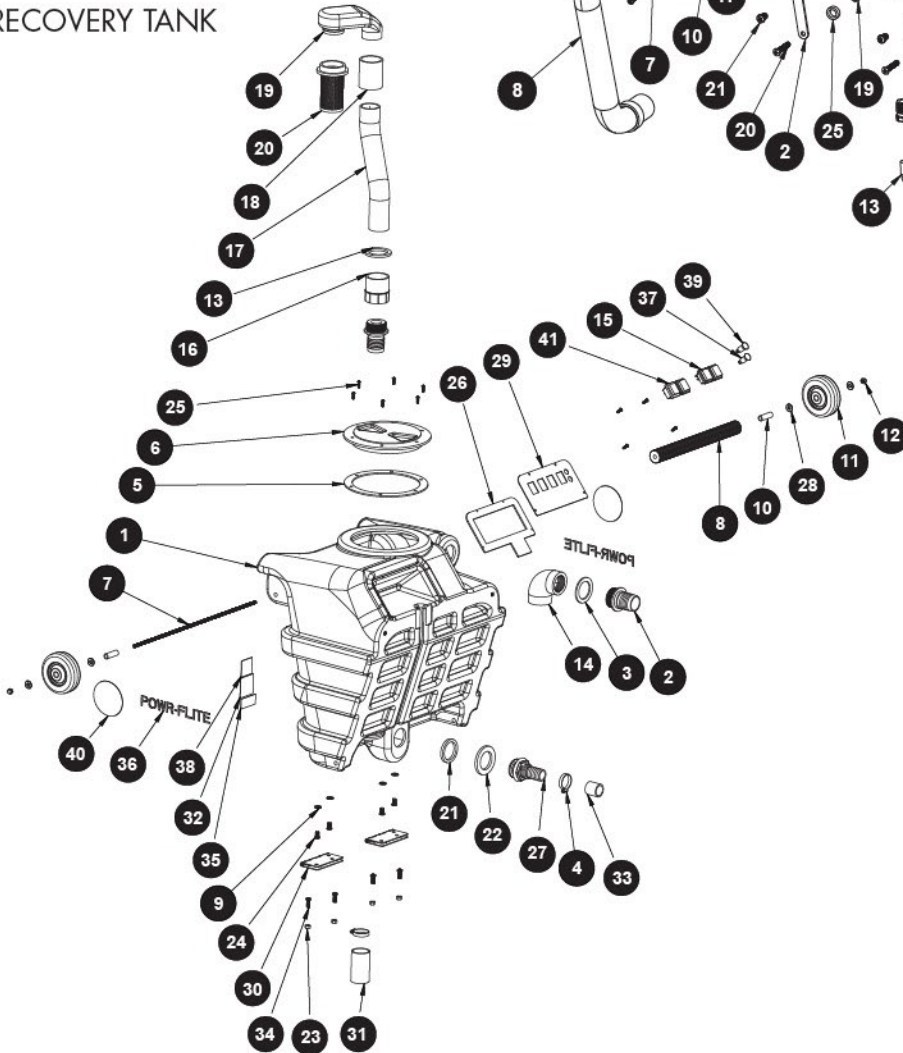


### SOLUTION TANK



### RECOVERY TANK



ref#	item #	description
<b>BASE PARTS</b>		
1	X1050-120	base
2	X9463	wheel axle
3	7CM007	washer 1/2 uss flat 18-8
4	X9063	wheel, 10", sv
5	X9470	muffler foam
6	X9471	muffler plate
7	72700A	fan, cooling, 115v
8	72638B	pressure regulator plate 100psi only
8	X9494	pressure regulator plate 200psi, and 500psi only
9	X9423	j hook perfect heat only
10	X9153	caster, 4" grey
11	X9466	vacuum plate
12	1942-A	vacuum
12	72365B	vacuum 3-stage 115v PFX1085MAX,PFX1070, and PFX1080CW only
13	71507A	elbow 1/2 h - 3/8 mpt
13	PX15	elbow hose barb 3/8"x1/4"
13	PX15A	fitting-nylon elbow 90 degree 1/4"npt x 3/8"hb heated only
14	X9467	plastic vacuum chamber
15	PX6	1/4" quick disconnect female
16	SF814	pump w/ by pass 100psi only
16	PT400A	pump assembly 120v 200psi only
16	PT400MS	pump assembly 120v 500psi only
17	X9468	vacuum chamber gasket
18	X9429	electrical recepticle
19	PX5	fitting quick connect 1/4
20	X8239	washer .400 id 1.50 od
21	X9045A	vac motor spacer
22	72000A	10-24 x 5 1/2 all thread
23	7BF004	nut keps 1/4-20
24	7CZ001	hose vacuum 2" dia
25	72387A	screw sheet metal #8x5/8" black
26	17850	washer plain #10
27	7GL002	push nut 1/2"
28	72783A	spacer, caster mid size
29	X9465	plate, heater/pump, mid size extractor
30	X8211	bolt 1/4-20 x 1"
31	X8218	washer 5/16 sae flat zinc
32	PX215	clamp 2 21/2" worm gear
33	72703A	screw 8-32 x 2 phil pan
34	7EW001	1/4-20x 3/4 phil pan
35	72702A	cover fan
36	7BF008	nut 10-32 keps
37	X8851	screw, 10-32 x 1 machine ph
38	X8260	nut 8-32 lock w/ nylon insert
39	M1374	12/3 sjtw 25' ext cord
40	X9079	gasket 3/8" donut
41	X9528	1/4" x 20 flanged separated nut
42	PX85	barb 1/4" x 3/8" male/male
43	7DL003	clamp 1/4 worm gear ss
43	70101A	nipple brass (heated only)
44	7BF003	nut 10-32 keps
45	HJ7	hose end cuff 1.5" to 2"
46	X8226	screw 1/4-20 x 1-1/4" hex head cap zinc plated
47	X9170	wiring harness heated only
47	X9159	wiring harness without heater
48	X8542	hose gray black heated only
48	X8550	20' thmd gray/black hose
49	K1157	cuff insider swivel with hole heated only
49	K1112	cuff 1-1/2" standard gray
50	X9492	1/4 barb x 1/4 male pipe steel
50	PX61A	ear clamp 18.5mm heated only
51	7BF030	nut 10-24 lock
52	X9214	label, ground symbol
53	X8284	screw 8-32 x 3/8 phil pan
54	72820A	1/8" spacer
55	7DW001	screw, 8-32 x 1/2", machine ph black
56	X8257	nut 6-32 lock
57	X9464	heater cover, mid size extractor
58	7CY002	1/4" tooth lock washer
59	X9256	heater
59	X9590	heater (PFX1085MAX and PFX1082CW only)
60	X9255	pad insulation
61	PX161	ferrule
62	PX160	thermal reset switch manual
63	PX158	thermal reset switch auto
64	PX162	compression fitting
65	7BS003	screw 1/4-20x1/2 phil pan
66	PC20	reducer 3/8" to 1/4"
66	X9316	swivel barb 1/4 h 1/4 m
67	PC49	1/4" 90 degree street elbow
68	PX3H	hose solution 3/8 id x 1/8"
69	X9226	heater installation
70	72713B	heater coil 3-stage vacuum Perfect Heat and PFX1085MAX only
71	70079C	hose 1/2 wire reinforced
72	X9315	solution hose 1/4" id 1/2" od
73	X9474	heater bracket

57-73 heated units only

ref#	item #	description
<b>SOLUTION TANK</b>		
1	X1052BLK	mid size extractor solution tank PFX1085MAX only
1	X1052BLUE	mid size extractor solution tank
2	X9444	front strap
3	X9448	clamp, discharge valve
4	00-0600-0503	m6 x 20 x1.65 fender washer ss
5	X9451	lid, solution tank
6	X9450	hinge, solution tank lid
7	72173A	clip spring
8	PAS37	drain hose
9	PAS36	plug drain hose
10	72669A	pad spring clip
11	X9475	side strap
12	PC22	reducer 1/2" to 3/8"
13	PX15	elbow hose barb 3/8"x1/4" (2 only PFX1085MAX)
14	X8261	screw #6 x 1/2 pan phil
15	X8278	screw 8-32 x 1/2 pan
16	7DL008	clamp 1/2 worm gear stainless hex
17	72175A	gasket nut plate
18	72170A	nut plate clip
19	X8237	lock nut 1/4"
20	X9359	screw, 1/4-20 x 1 1/2", machine, ph, black
21	7BS003-BLK	screw 1/4-20 x1/2 phil pan
22	17160	1/4-20 x 3/4 screw
23	7BF004	nut keps 1/4-20
24	7BS003	screw 1/4-20 x1/2 phil pan
25	72635A	spacer 1/2" id x 3/4" od
26	X9069	end loop with two holes
27	72660A	rope solid braid
28	X8235	washer 1/4 flat uss zinc
29	71639A	1/7-20 x2-1/2" hex head
30	72667A	washer rubber .29id .688od
31	7AF003	plug counter hex 1/2" not on PFX1085MAX
32	X9483A	gasket strip
33	71651A	screw 10-32 x 1/2 phil pan
34	PX303	inline filter and housing
35	X8256	nut 8-32 keps zinc
36	7BF008	nut 10-32 keps
37	X8851	screw, 10-32 x 1 machine ph

ref#	item #	description
<b>RECOVERY TANK</b>		
1	X1051BLK	recovery tank mid size extractor PFX1085MAX only
1	X1051BLUE	recovery tank mid size extractor blue
2	PX25	fitting plastic bulkhead
3	PX14A	valve gasket .125" thk
4	7DL005	clamp 1-1/2 worm gear ss hex
5	PX103G	gasket lid 8" od
6	PX103	lid screw in 6" with black ring
7	X9452	1/4-20 x 1.875 all thread, zinc
8	X9453	handle, mid size extractor
9	X8858	washer id.299 od.622 thk.055
10	72486A	spacer 1.625 long
11	X8025	wheel black 4" x 1 1/4"
12	72148A	nut, cap, 1/4-20 acorn ss
13	PX14	dump valve gasket 1 1/2, 2.5 od, 1/75 rubber
14	PX11A	fitting plastic elbow 90
15	PX87	switch, rocker, dpst 20a
16	PX63	coupler plastic 1 1/2" slip
17	72628B	vacuum standpipe, mid size extractor
18	72615A	coupling pvc 1 1/2 slip
19	PX33	vacuum tube
20	PX31	float cage with heavy ball
21	72679A	gasket, drain, inner 1.8 id 2.3 od
22	72680A	gasket, drain, outer 1.8 id 2.8 od
23	7BF004	nut keps 1/4-20
24	7BS003	screw 1/4-20 x1/2 phil pan
25	72387A	screw sheet metal #8x5/8" black
26	X9484	gasket switch plate
27	72677A	drain fitting 1"
28	X8235	washer 1/4 flat uss zinc
29	X9801	switch panel, mid size extractor
30	X9014	sce tank hinge
31	72656A	hose 1-1/2" wire reinforced black 50'
32	X8459	label, serial number, plain
33	72678A	tubing vinyl 1" id 1 1/4" od
34	7EW001	1/4-20x 3/4 phil pan
35	X8976	label, warning
36	X8400A	label, powr-flite
37	PX86	indicator light green
38	X1003	made in the usa label
39	X8102	neon light with lens heated machines only
39	71804A	plug 1/2 black nylon
40	X9217MS	perfect heat label PFX1085MAX only
41	X9173	hole plug switch hole

\*call for pricing and availability of all referenced parts