

Powr-Flite®

OPERATOR'S MANUAL & PARTS LIST

Midsized Extractor Model PFX1080AW & PFX1085EAW SERIES



**WARNING: OPERATOR MUST READ AND UNDERSTAND THIS MANUAL
COMPLETELY BEFORE OPERATING THIS EQUIPMENT.**

Save These Instructions

IMPORTANT SAFETY PRECAUTIONS

WARNING!: To reduce the risk of fire, electric shock, or injury

WARNING
To avoid fire, DO NOT use with a flammable or combustible liquid to clean floor.



WARNING
To avoid electric shock, DO NOT expose to rain. Store Indoors.

When using this upright extractor, basic precautions should always be followed, including the following:

- 1) DO NOT leave unit when plugged in. Unplug from outlet when not in use and before servicing.
- 2) DO NOT allow unit to be used as a toy. Close attention is necessary when used around or near children.
- 3) Use only as described in this manual. Use only manufacturer's recommended attachments.
- 4) DO NOT use with damaged cord or plug. If unit is not working properly because it has been dropped, dropped into water, left outdoors, or damaged in any way, contact an authorized service center.
- 5) DO NOT handle plug or appliance with wet hands.
- 6) DO NOT put any objects into openings. DO NOT use with any opening blocked: keep free of dust, lint, hair, or anything that may reduce air flow.
- 7) Keep hair, loose clothing, fingers, and all parts of body away from openings and moving parts.
- 8) DO NOT pick up anything that is smoking or burning such as cigarettes, matches, or hot ashes.
- 9) DO NOT use to pick up hazardous chemicals.
- 10) Turn off all controls before unplugging.
- 11) Turn unit off immediately if foam or liquid comes from machine exhaust. Empty & clean out recovery (dirty) tank and use defoamer to correct the problem.
- 12) DO NOT use to pick up flammable or combustible liquids such as gasoline or use in areas where they may be present.
- 13) DO NOT use where oxygen or anesthetics are used.
- 14) Replace damaged or worn parts immediately with genuine original equipment parts to maintain safety.
- 15) This unit must be connected to a properly grounded outlet only. See grounding instruction on page 3.

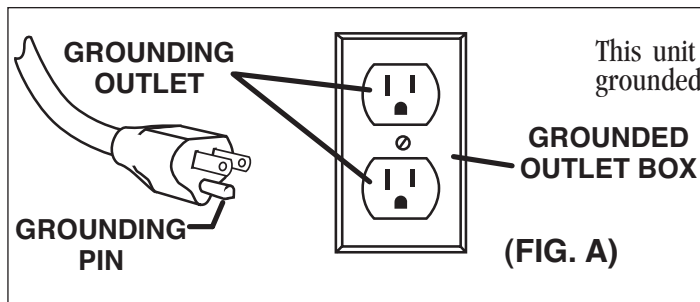
GROUNDING INSTRUCTIONS

DANGER: Improper use of the grounding plug can result in a risk of electric shock.

GROUNDING INSTRUCTIONS

This extractor must be properly grounded. If it should malfunction or breakdown, grounding provides a path of least resistance for electrical current to reduce the risk of electric shock. This machine is equipped with 1 or 2 pigtail cords having an equipment-grounding conductor and grounding plug. The pigtails must be inserted into an appropriate 12 gauge 3 prong extension cord. This unit is for use on a nominal 120 volt circuit and has a grounded plug that looks like the plug illustrated in (Fig. A).

GROUNDING METHODS



This unit is for use on a nominal 120 volt circuit and has a grounded plug that looks like the plug illustrated in (Fig. A).

WARNING!

Improper connection of the equipment-grounding conductor can result in a risk of electric shock. Check with a qualified electrician or service person if you are in doubt as to whether the outlet is properly grounded. **DO NOT** modify the plug provided with the appliance. If it will not fit the outlet, have a proper outlet installed by a qualified electrician.

General instructions for PFX1080 series Extractors

Congratulations on your purchase of a Powr-Flite extractor. You are now equipped to handle any and all commercial carpet cleaning jobs.

Shipping and Damage

This equipment is thoroughly inspected, tested, and packaged to provide equipment in good operating condition. It is beyond our control after the equipment is turned over to a freight carrier. The freight carrier received and signed for the equipment in good condition. Consequently, it is most important to protect your interest by carefully complying with the following instructions: Please inspect your cartons for any damage (including concealed damage) that might have occurred during shipment. Any damage is the responsibility of the freight carrier and should be reported to the freight carrier immediately. It is your responsibility to issue a claim and to receive compensation from the freight carrier for any damage done in transit. Damage of this sort is not warranted.

Follow these easy step-by-step instructions to ensure proper operating performance.

1. Fill up the fresh water solution tank with tap water that is 120-135 degrees and approved carpet cleaning chemical, if you are not pre-spraying your chemical on the carpet.
2. Attach two 12 gauge extension cords (one cord for non-heated models).
3. Plug each extension cord into a separate and grounded 20 amp wall socket circuits. When this is accomplished the green indicator light will be lit (on heated models).
4. Attach the hose system to the unit and to your carpet wand.
5. Turn on the heater and the pump to the "on" position, (only pump on non-heated models). When the heater is on, the orange indicator light on the switch panel will be lit.
6. With the solution line attached to the wand and the machine, prime the pump by squeezing the trigger on the wand releasing the water (hold wand tip over solution tank to put water back into solution tank). This will pump water into the heater and get any air out of the solution line. Let the heater heat up. This will take 3 to 5 minutes. *Prime pump on 500 p.s.i. models with prime hose (included).
7. Turn vacuum switches to the "on" position one at a time to begin cleaning.
8. Anyone designated to operate this equipment must read and thoroughly understand all instructions and precautions prior to use.
9. Never use equipment out of doors or in the rain.
10. Never use flammable or explosive materials in or around this equipment!
11. When vacuum tank is full, empty by using drain hose on the front of the machine. If a pail is used to empty the vacuum waste tank, do not use the same pail to fill the solution tank as this can result in putting dirt and grit into the solution line that can plug filters, orifices, and generally degrade the solution line system (do not reuse solution).
12. To empty solution tank, detach the wand from the end of the vacuum hose and insert the vacuum hose into the solution tank. Turn the vacuum switches to "on" position and transfer solution to vacuum tank and dispose of as outlined in #11. Clean vacuum stack filter at this time.

Maintenance

To receive reliable service from this equipment, regular daily maintenance is a required.

1. Keep the equipment clean, both inside and out.
2. Lubricate brass quick disconnects with a quality lubricant such as WD-40[®].
3. Flush solution systems after use with clear, clean water. (A white vinegar solution may also be used). This will counter-act hard water and alkaline deposits and aid in keeping orifices clean.
4. Do not allow fluid, either in solution or waste tank, to sit overnight. The unit should be emptied and cleaned daily.
5. Clean the strainer in the solution tank, the filters on the vacuum stack in vacuum tank, and all lint filters in the inlet or vacuum tanks daily.
6. Do not use the same receptacle (pail) to fill solution tank that is used to remove waste from vacuum tank.
7. When the unit is not in use, leave the vacuum tank lid open.
8. At the end of each day, run the vacuum for 3 minutes with lid open and filter off. (See Fig. A)

Safety Precautions

These precautions are designed with the safety of the operator, the equipment, and others in mind and must be followed at all times to avoid serious personal harm and/or death, and damage to the unit.

1. Always use a grounded electrical outlet.
2. Always disconnect electric cable from electrical outlet before attempting to make any adjustments or repairs.
3. Never use this equipment as a toy.
4. Never use equipment near or around flammable or explosive materials, fuels, or solvents.
5. Never put flammable materials, fuels, or solvents into equipment.

6. Never lift the machine by pressure regulator (on heated model).
7. Do not allow the unit to freeze!
8. The equipment was not designed to be used outdoors or in the rain.
9. Do not operate in standing water.
10. Wear safety equipment and clothing to protect from extremely hot water.
11. Do not operate equipment under any unsafe condition.
12. Do not operate if power cords, hoses, etc. are cracked, frayed, leaking, or otherwise in need of repair.

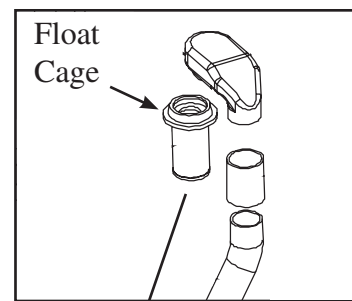


Fig. A



Storage of Equipment

1. Store extractor indoors in dry area.
2. Recovery and solution tank should be empty and clean when the extractor is not in use.
3. Leave the recovery lid and drain hose open to air out the recovery tank.
4. Do not store in freezing temperature.
5. A small amount of windshield washer fluid may be left in the pump and internal solution line for protection against freezing.

Warnings

1. Do not break off or pull the grounding prong on the plug.
2. Do not attempt repair on a warranted machine unless instructions to perform it by an authorized shop are obtained from the factory.
3. Do not use citrus-based (D-Limonene) cleaners in this machine.
4. Do not use cleaning chemicals in this machine except those recommended for steam-type extraction equipment. The use of any chemicals with abrasive additives voids the warranty.
5. Do not use any replacement parts except those specified on the parts list. Performance of the machine could be affected if substitutions are made.
6. Do not use water in excess of 140° F (62° C) through the pump system. It could damage the seals and polypropylene casing of the diaphragm pump.
7. Follow maintenance schedule strictly.
8. **Failure to comply with the above warnings instructions will void the warranty.**



ONE LAST REMINDER

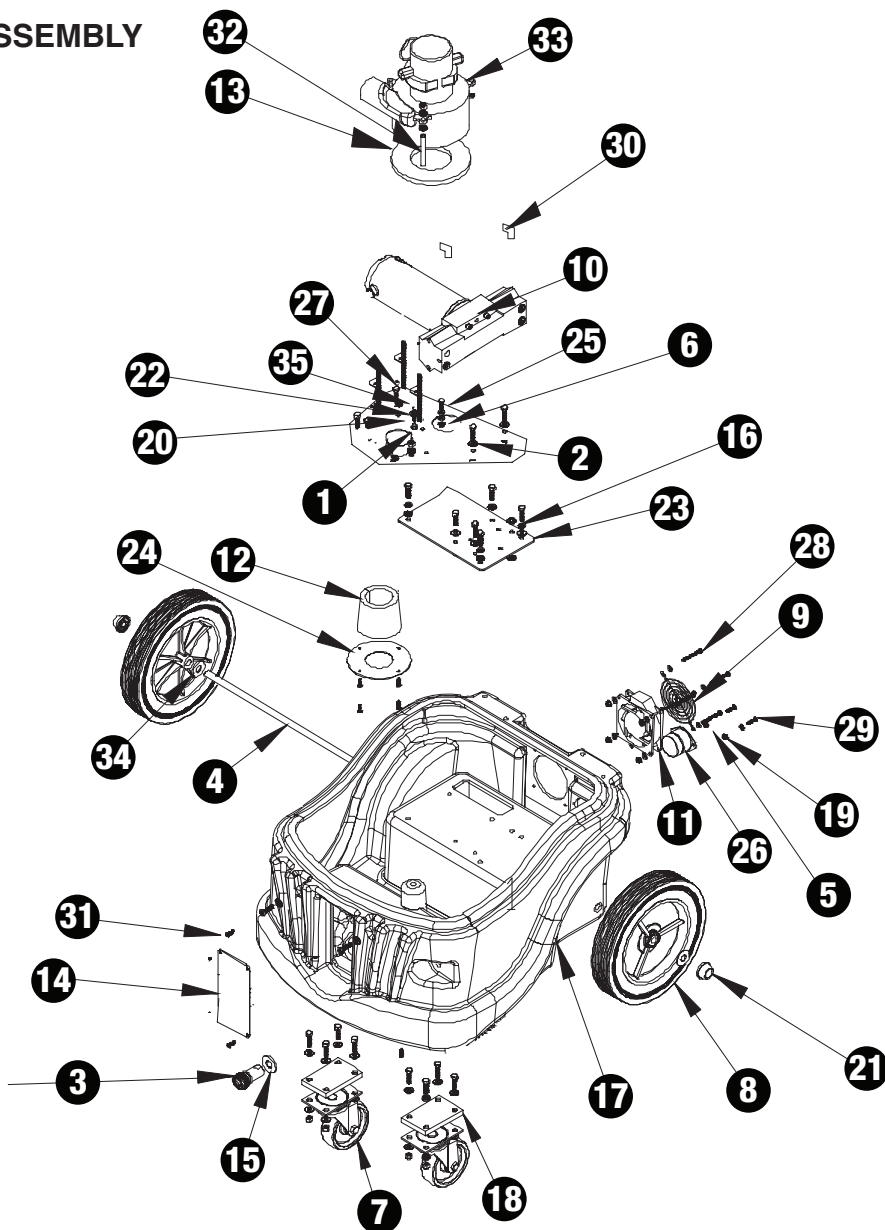
Read All Instructions, Warning and Cautions Before Using. These guidelines are presented for your protection and convenience. Please read them carefully, since failure to heed these precautions could result in discomfort or injury. When using an electrical appliance, basic safety precautions should always be followed.

WARNING

TO AVOID FIRE, DO NOT USE WITH A FLAMMABLE OR COMBUSTIBLE LIQUID TO CLEAN FLOOR.

PFX1080AW PARTS LIST

PFX1080AW BASE ASSEMBLY

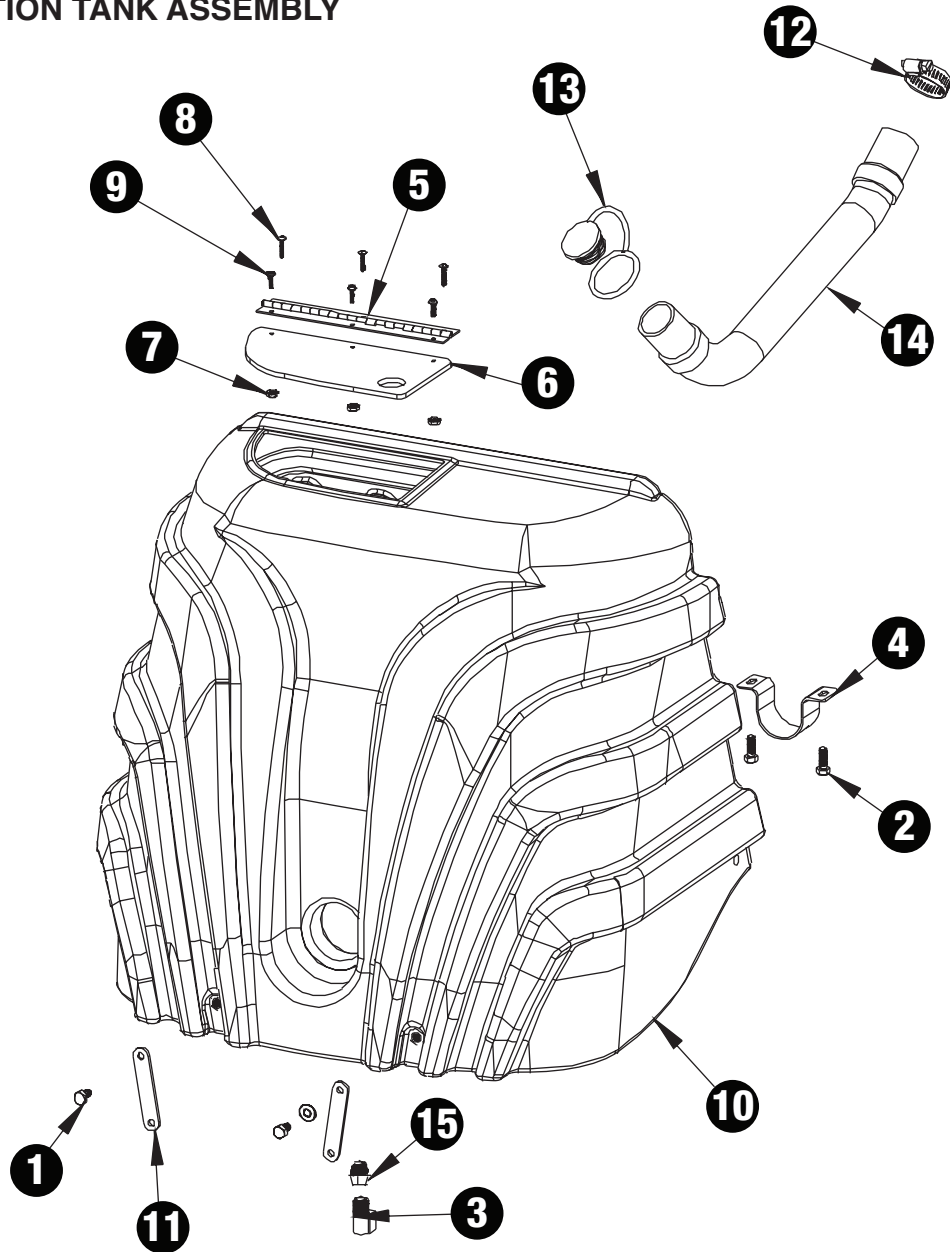


ITEM	DESCRIPTION	PART NO.
1	10/-24 ALL THREAD	72000A
2	WASHER 5/16 SAE FLAT ZINC	X8218
3	1/4" QUICK DISCONNECT	PX6
4	AXLE REAR MID SIZE	X9463
5	NUT 8-32 LOCK W/NYLON INSERT	X8260
6	BOLT 1/4-20X 1"	X8211
7	CASTER, 4" BLACK	X9153
8	WHEEL 10" GRAY	X9063
9	COVER FAN	72702A
10	PUMP 100 PSI W/BY-PASS	SF814
11	FAN COOLING 115V	72700A
12	FDAM, MUFFLER, MID SIZE EXTRACTOR	X9470
13	GASKET, VACUUM MOTOR SEAL	X9696
14	PLATE, MEDEX 100 PSI	X9494
15	WASHER, 1/2 USS FLAT ZINC	X8239
16	NUT KEP 1/4-20"	7BF004
17	MEDIUM SIZE EXTRACTOR BASE	X1050-120
18	SPACER, CASTER	72783A

ITEM	DESCRIPTION	PART NO.
19	NUT 8-32 KEPS	X8256
20	NUT 10-32 KEPS	7BF008
21	NUT PUSH 1/2"	7GL002
22	NUT, KEP 10-24 ZINC	7BF003
23	PLATE, HEATER/PUMP, MID SIZE EXTRACTOR	X9465
24	PLATE MUFFLER MID SIZE EXTRACTOR	X9471
25	PLATE VACUUM MID SIZE EXTRACTOR	X9868
26	RECEPTACLE, FLANGED INLET STRAIGHT BLADE	X9429
27	SCREW, SHEET METAL #8-5/8" BLACK	72387A
28	SCREW, 8-32 X 1 3/4" MACHINE PH ZINC	7DW001
29	SCREW, 8-32 X 3/4" MACHINE PH ZINC	72703A
30	FITTING NYLON ELBOW 90 DEG.	PX15
31	SCREW, 1/4-20 X 1 PHIL PAN	7BS003
32	SPACER VAC MOTOR	72651B
33	VACUUM 2 STAGE	72855A
34	WASHER 1/2 USS FLAT, BLACK	7CM007
35	WASHER #10 FLAT ZINC	X8225

PFX1080AW PARTS LIST

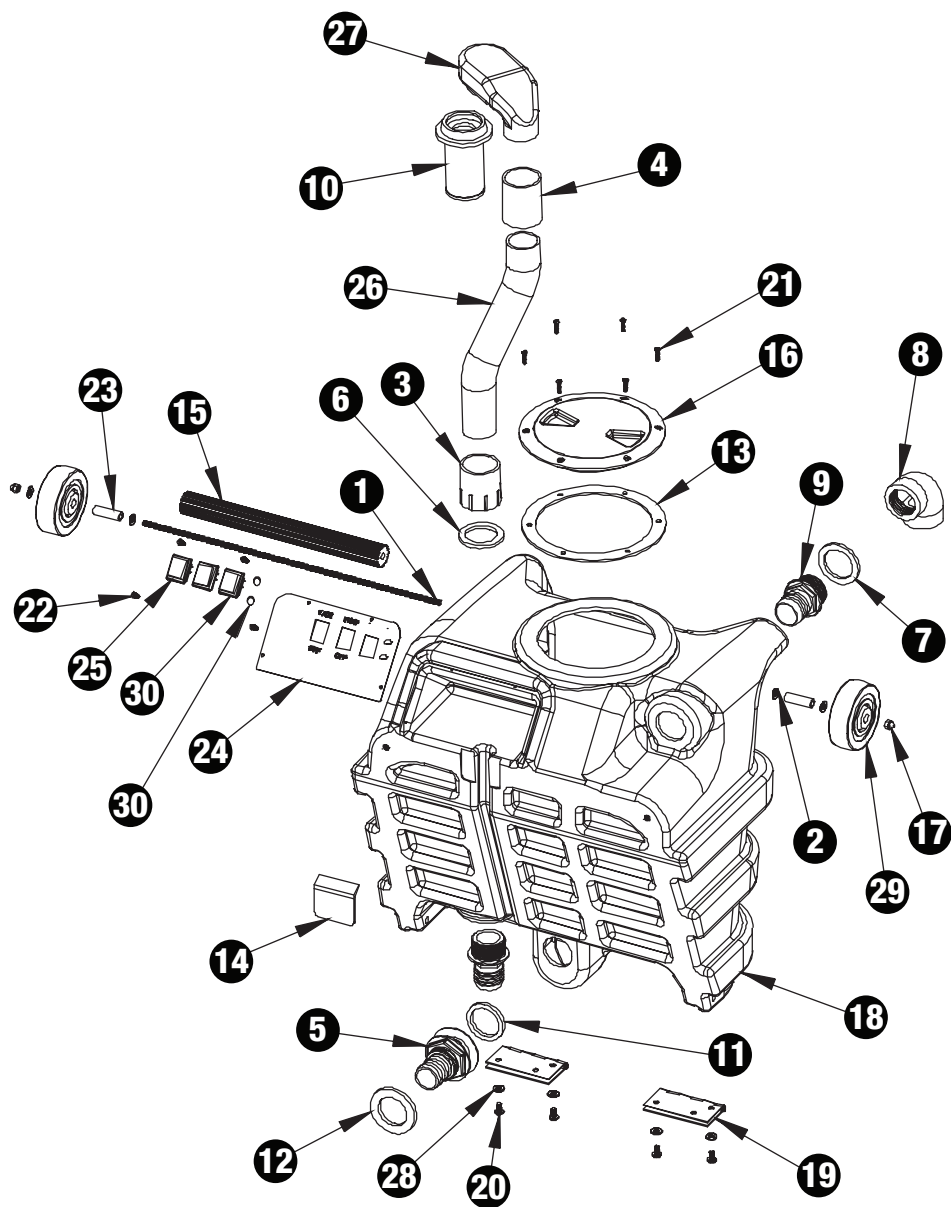
PFX1080AW SOLUTION TANK ASSEMBLY



ITEM	DESCRIPTION	PART NO.
1	SCREW 1/4-20X1/2 PHIL PAN	7BS003-BLK
2	SCREW 1/4-20X1/2 PHIL PAN	7BS003
3	FITTING NYLON ELBOW 90 DEG.	PX15
4	CLAMP, DISCHARGE VALVE	X9448
5	HINGE SOLUTION TANK LID	X9450
6	LID SOLUTION TANK	X9451
7	NUT 8-32 KEPS ZINC	X8256
8	SCREW #6 X 1/2 PAN HD PHIL	X8261
9	SCREW 8-32 X 1/2 PAN HD PHIL	X8278
10	MID SIZE EXTRACTOR SOLUTION TANK	X1052BLUE
11	STRAP, FRONT	X9444
12	CLAMP 1-1/2 WORM GEAR	7DL005
13	PLUG DRAIN HOSE	PAS36
14	HOSE DRAIN	PAS37
15	REDUCER 1/2" TO 3/8"	PC22

PFX1080AW PARTS LIST

PFX1080AW RECOVERY TANK ASSEMBLY

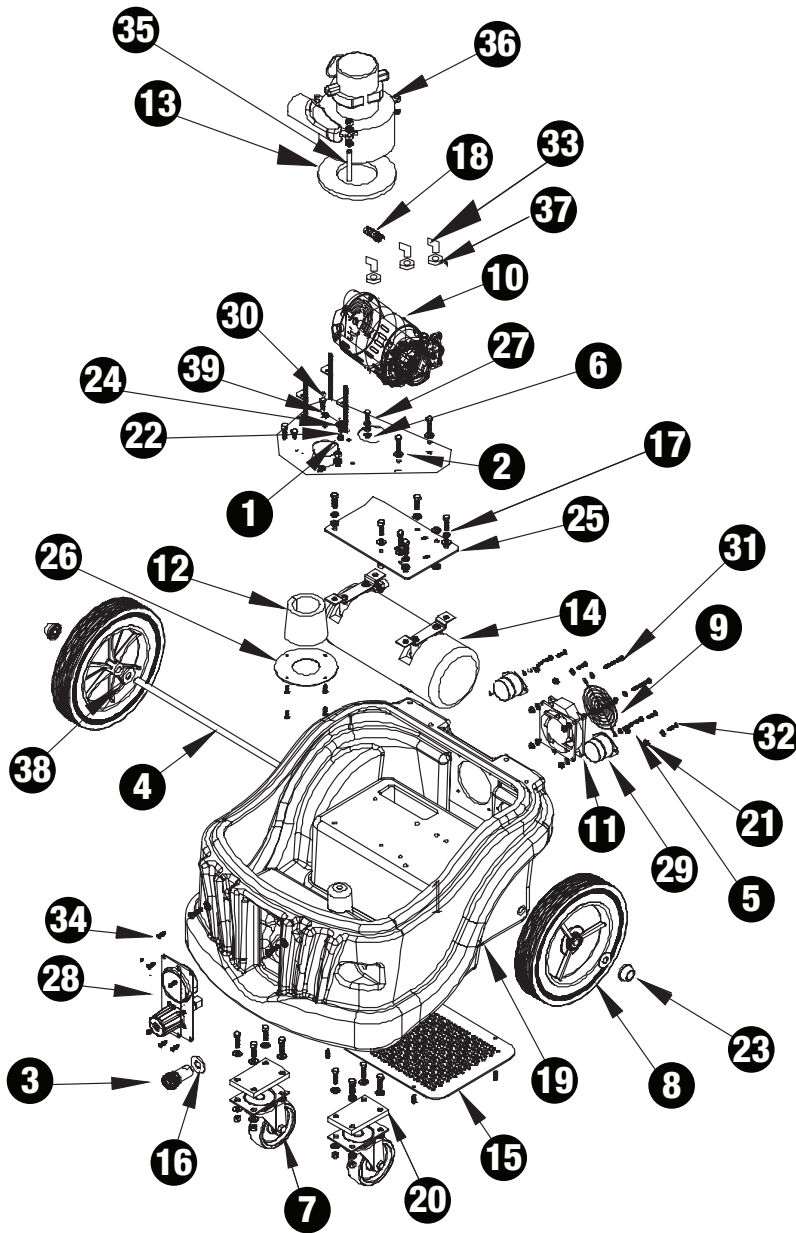


ITEM	DESCRIPTION	PART NO.
1	5/16-18 x 18.75 ALL THREAD	X9452
2	WASHER 1/4 FLAT USS ZINC	X8235
3	COUPLER PLASTIC	PX63
4	COUPLING PVC	72615A
5	DRAIN FITTING 1"	72677A
6	DUMP VALVE GASKET	PX14
7	VALVE GASKET	PX14A
8	FITTING PLASTIC ELBOW 90	PX11A
9	FITTING PLASTIC BULKHEAD	PX25
10	FLOAT CAGE W/HEAVY BALL	PX31
11	GASKET DRAIN INNER	72679A
12	GASKET DRAIN OUTER	72680A
13	GASKET LID	PX103G
14	GASKET, SWITCH PLATE	X9484
15	HANDLE	X9453

ITEM	DESCRIPTION	PART NO.
16	LID SCREW-IN	PX103
17	NUT CAP 5/16-18 ZP	72148A
18	MID SIZE EXTRACTOR RECOVERY TANK	X1051BLUE
19	SCE TANK HINGE	X9014
20	SCREW 1/4-20X1/2 PHIL PAN	7BS003
21	SCREW #8X5/8 BLACK	72387A
22	SCREW #8X5/8 BLACK	72387A
23	SPACER 1.625 LONG	72486A
24	SWITCH PLATE	X9801AW
25	SWITCH ROCKER	PX87
26	STANDPIPE	72628B
27	VACUUM TUBE	PX33
28	WASHER	X8858
29	WHEEL BLACK 4" X 1-1/4"	X8025
30	HOLE PLUG SWITCH HOLE	X9173
31	PLUG 1/2 BLACK NYLON	71804A

PFX1085EAW PARTS LIST

PFX1085EAW BASE ASSEMBLY

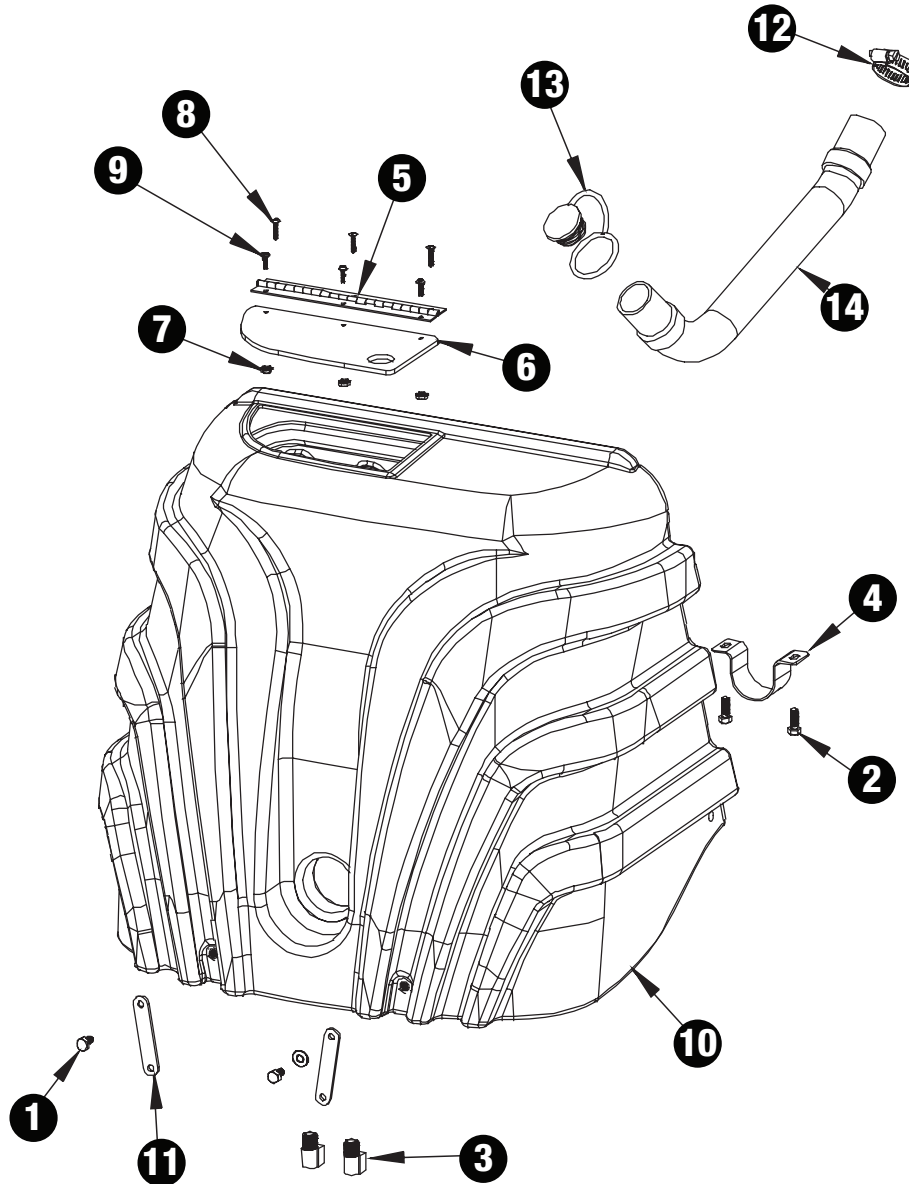


ITEM	DESCRIPTION	PART NO.
1	10/-24 ALL THREAD	72000A
2	WASHER 5/16 SAE FLAT ZINC	X8218
3	1/4" QUICK DISCONNECT	PX6
4	AXLE REAR MID SIZE	X9463
5	NUT 8-32 LOCK W/NYLON INSERT	X8260
6	BOLT 1/4-20X 1"	X8211
7	CASTER, 4" BLACK	X9153
8	WHEEL 10" GRAY	X9063
9	COVER FAN	72702A
10	CAT PUMP 500 PSI, AC*	CP500AC
11	FAN COOLING 115V	72700A
12	FDAM, MUFFLER, MID SIZE EXTRACTOR	X9470
13	GASKET, VACUUM MOTOR SEAL	X9696
14	HEATER 1650W 15A	X9256
	HEATER 3000W 240V	PF3000B
15	HEATER COVER, MID SIZE EXTRACTOR	X9464
16	WASHER ,1/2 USS FLAT ZINC	X8239
17	NUT KEP 1/4-20"	7BF004
18	BARB,1/2H 3/8M	PX85
19	MEDIUM SIZE EXTRACTOR BASE	X1050-120
20	SPACER, CASTER	72783A
21	NUT 8-32 KEPS	X8256
22	NUT 10-32 KEPS	7BF008
23	NUT PUSH 1/2"	7GL002
24	NUT, KEP 10-24 ZINC	7BF003
25	PLATE, HEATER/PUMP, MID SIZE EXTRACTOR	X9465AW
26	PLATE MUFFLER MID SIZE EXTRACTOR	X9471
27	PLATE VACUUM MID SIZE EXTRACTOR	X9868
28	PRESSURE GAUGE ASSEMBLY 500psi WITH PULSE HOSE	X9501-CP
29	RECEPTACLE, FLANGED INLET STRAIGHT BLADE	X9429
30	SCREW, SHEET METAL #8-5/8' BLACK	72387A
31	SCREW, 8-32 X 1 3/4" MACHINE PH ZINC	7DW001
32	SCREW, 8-32 X 3/4" MACHINE PH ZINC	72703A
33	ELBOW STREET 1/4" 90 DEGREE	PC49
34	SCREW, 1/4-20 X 1 PHIL PAN	7BS003
35	SPACER VAC MOTOR	72651B
36	VACUUM 2 STAGE	72855A
	VACUUM 2 STAGE (230V)	72855B
37	REDUCER 3/8" TO 1/4"	PC20
38	WASHER 1/2 USS FLAT, BLACK	7CM007
39	WASHER #10 FLAT ZINC	X8225

*WIRE HIGH FOR HIGH VOLTAGE - WIRE LOW FOR LOW VOLTAGE

PFX1085EAW PARTS LIST

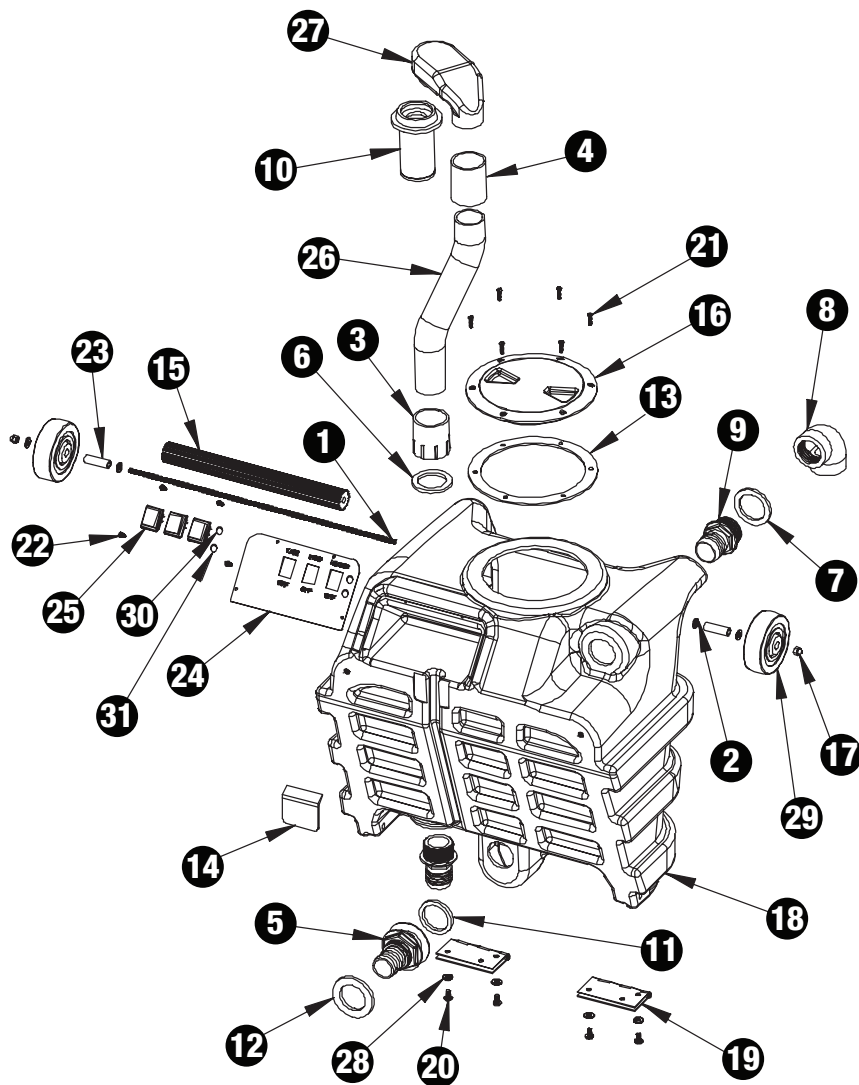
PFX1085EAW SOLUTION TANK ASSEMBLY



ITEM	DESCRIPTION	PART NO.
1	1/4-20 X 1/2 HEX CAP SCREW	7BS003-BLK
2	1/4-20 X 3/4 HEX CAP SCREW	7BS003
3	1/4" 90 DEGREE STREET ELBOW	PC49
4	CLAMP, DISCHARGE VALVE	X9448
5	HINGE SOLUTION TANK	X9450
6	LID, SOLUTION TANK	X9451
7	NUT 8-32 KEPS ZINC	X8256
8	SCREW SHEET METAL #8 X 3/4" BLACK	X8261
9	SCREW , 8-32 X 1/2" MACHINE PH BLACK	X8278
10	SOLUTION TANK HOUSING	X1052BLUE
11	STRAP, FRONT MID SIZE EXTRACTOR	X9444
12	CLAMP, 1 1/2" WARM GEAR	7DL005
13	PLUG DRAIN HOSE	PAS36
14	DRAIN HOSE	PAS37

PFX1085EAW PARTS LIST

PFX1085EAW RECOVERY TANK ASSEMBLY



ITEM	DESCRIPTION	PART NO.
1	5/16-18 x 18.75 ALL THREAD	X9452
2	WASHER 1/4 FLAT USS ZINC	X8235
3	COUPLER PLASTIC	PX63
4	COUPLING PVC	72615A
5	DRAIN FITTING 1"	72677A
6	DUMP VALVE GASKET	PX14
7	VALVE GASKET	PX14A
8	FITTING PLASTIC ELBOW 90	PX11A
9	FITTING PLASTIC BULKHEAD	PX25
10	FLOAT CAGE W/HEAVY BALL	PX31
11	GASKET DRAIN INNER	72679A
12	GASKET DRAIN OUTER	72680A
13	GASKET LID	PX103G
14	GASKET, SWITCH PLATE	X9484
15	HANDLE	X9453

ITEM	DESCRIPTION	PART NO.
16	LID SCREW-IN	PX103
17	NUT CAP 5/16-18 ZP	72148A
18	MID SIZE EXTRACTOR RECOVERY TANK	X1051BLUE
19	SCE TANK HINGE	X9014
20	SCREW 1/4-20X1/2 PHIL PAN	7BS003
21	SCREW #8X5/8 BLACK	72387A
22	SCREW #8X5/8 BLACK	72387A
23	SPACER 1.625 LONG	72486A
24	SWITCH PLATE	X9801AW
25	SWITCH ROCKER	PX87
26	STANDPIPE	72628B
27	VACUUM TUBE	PX33
28	WASHER	X8858
29	WHEEL BLACK 4" X 1-1/4"	X8025
30	INDICATOR LIGHT GREEN	PX86
31	NEON LIGHT WITH LENS	X8102

TROUBLESHOOTING

ELECTRICAL SYSTEM

PROBLEM	POSSIBLE CAUSE	SOLUTION
No electrical power.	1. Defective power cord. 2. Circuit breaker off or fuse blown.	1. Replace. 2. Turn circuit breaker on or replace fuse. Unplug any equipment using the same circuit.
Switch is turned on. Intermittent power to motor(s).	1. Faulty electrical cable. 2. Defective switches. 3. Loose terminal or discolored terminal connections.	1. Repair or replace. 2. Replace. 3. Replace.
Electrical Shock	1. Equipment not grounded.	1. Locate grounded outlet.

VACUUM SYSTEM

PROBLEM	POSSIBLE CAUSE	SOLUTION
Vacuum motor on. Little or no vacuum on wand head.	1. Drain hose open. 2. Defective vacuum hose. Kinks in vacuum hose. 3. Vacuum disconnected.	1. Close drain hose. Recovery tank lid must be closed. 2. Repair or replace hose. 3. Open machine, connect vacuum hose to recovery tank.
Not enough vacuum power at the machine.	1. Damaged recovery tank lid. 2. Lint clogging ball - type shutoff screen. 3. Vacuum hose connection between stand pipe and vacuum motor. 4. Vacuum motor exhaust blocked. 5. Cords not plugged into separate circuits	1. Replace. 2. Remove screen. Clean out fibers and accumulated dirt. 3. Check for leaks around clamps and cuffs (tighten). Replace damaged hose(s). 4. Check air flow by removing hose from machine and feel the exhaust under the machine. Remove obstruction. 5. Relocate one cord to a different room.

VACUUM SYSTEM

PROBLEM	POSSIBLE CAUSE	SOLUTION
Motor running and no vacuum at all.	1. Faulty vacuum motor.	1. Replace.
No exhaust from the blowport.	2. Water shutoff closed.	2. Clean water shutoff screen.
Premature closing of ball type shutoff.	1. Dirty or clogged shutoff filter screen.	1. Remove and clean screen.
Ball type shutoff failing to release after recovery tank is drained.	2. Ball coated with detergent or other foreign material. 2. Screen slightly out of round.	2. Remove and rinse ball with clean water. 3. Bend screen by squeezing slightly by hand until there is an obvious space between ball and inside of screen.

Foam/dirty solution coming out of vacuum exhaust port.

1. Foam from carpet by-passing water shutoff.
2. Elbow in vacuum tank is not positioned correctly.

1. Use additional defoamer.
2. The elbow should be pointed directly at the side wall of the tank away from the ball type shutoff.

SOLUTION SYSTEM

PROBLEM	POSSIBLE CAUSE	SOLUTION
Pump motor on – no spray through jets.	1. Clogged or faulty solution control valve. 2. Clogged or faulty quick disconnect on housing. 3. Clogged jets	1. Check intake on valve and remove lint or other foreign material. 2. Depress plunger on solution hose against inside wall of solution tank. If solution is flowing at this point, the system is O.K. If no solution flows, check the quick disconnect for lint and other foreign matter. 3. Clean jets on wand or tool.

PROBLEM	POSSIBLE CAUSE	SOLUTION
Uneven spray from jet. Spray weak or uneven.	1. Clogged strainer in solution tank. 2. Clogged jet.	1. Unscrew strainer and remove lint and any other foreign material from screen. 2. Remove and clean.
Leaking or stuck solution valve.	1. Foreign material in valve. 2. Loose brass hex nut. 3. Valve worn or seals worn.	1. Remove brass hex plug, clean valve and replace. 2. Reseal hex and plug. 3. Replace worn parts with solution valve repair kit.
Pump motor not working.	1. Loose wiring 2. Defective pump pressure switch 3. Motor burnout	1. Tighten wiring 2. Replace with new pressure switch assembly 3. Replace pump motor
Pump pressure low.	1. Clogged screens on. 2. Defective rectifier or motor. 3. Pump not primed.	1. Unscrew strainer in solution tank remove lint and any other foreign material from screen. 2. Replace. 3. Plug priming hose into solution connection and place end in solution tank. Run pump for 4 minutes
Pump pressure varies.	1. Worn carbon brushes. 2. Defective pump pressure control switch.	1. Replace brushes. 2. Replace.

WARRANTY

The manufacturer warrants to the original purchaser that products manufactured are free from defects of workmanship and material, provided such goods are installed, operated and maintained in accordance with written manuals or other instructions for a period of 5 years from date of purchase on housings and frame, 3 years on heater, 1 year on pump, 2 years on vac motor, and parts and workmanship. In case you as our customer, meet any trouble with your machine, contact your Powr-Flite representative who will be happy to be of service to you and will take care of the warranty settlement.

NOTE: Alterations and changes made to the machine without written approval of the manufacturer and use of unapproved spare parts will not be covered by warranty.

Powr-Flite[®]

A Tacony Company

3101 Wichita Court • Ft. Worth, TX 76140-1755
1-800-880-2913 • Fax: 1-817-551-0719 • www.Powr-Flite.com