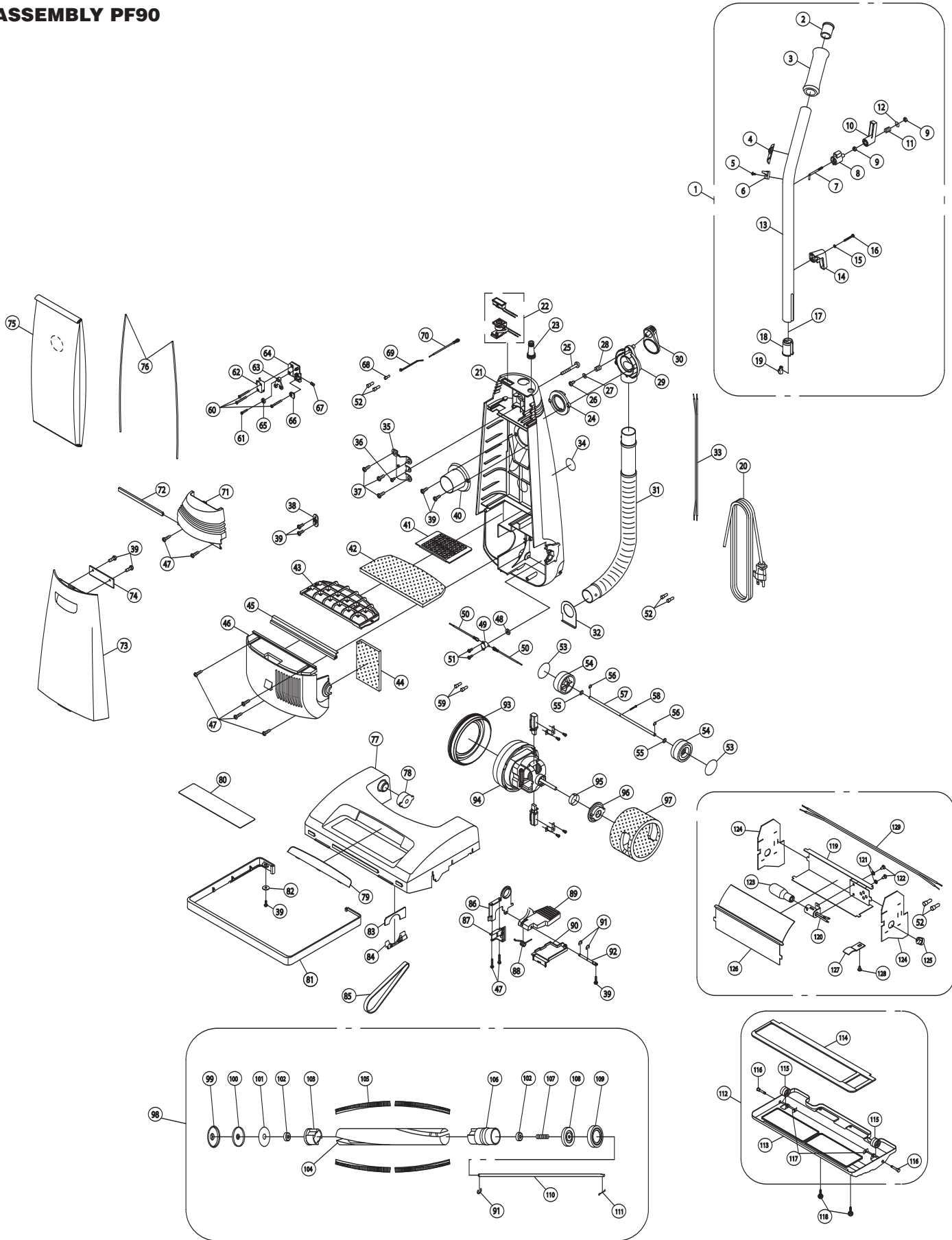


**ASSEMBLY PF90**



ref#	order	description
1	<b>18.146</b>	handle assembly complete
2	<b>G10</b>	handle end cap
3	<b>B431-2014</b>	foam handle grip
4	<b>AE0663714</b>	switch knob
5	<b>A732-0700</b>	set screw
6	<b>AK0723582</b>	switch knob guard
7	<b>AE0893006</b>	handle tube fixing screw
8	<b>AE1053582</b>	hook holder, black
9	<b>4840022</b>	nut
10	<b>B430-0314</b>	upper cord hook
11	<b>B430-0200</b>	cord hook spring
12	<b>A430-0305</b>	washer
13	<b>AE1023001</b>	handle tube
14	<b>54.018</b>	lower cord hook
15	<b>A732-3900</b>	washer
16	<b>A732-3300</b>	set screw
17	<b>AE0673006</b>	handle lever rod
18	<b>AC0533582</b>	lever holder
19	<b>AC0543582</b>	lever knob
20	<b>AK0733582</b>	power cord, 40'
21	<b>54.009</b>	dust compartment
22	<b>AG1514000</b>	vacuum sensor and indicator
	<b>AG0123000</b>	vacuum sensor
	<b>AG0133000</b>	full bag initiator
23	<b>AK0253582</b>	boot strain relief
24	<b>A721-0214</b>	suction inlet gasket
25	<b>A232-0100</b>	handle screw
26	<b>4250265</b>	set screw
27	<b>4300916</b>	washer
28	<b>B625-0805</b>	suction spring
29	<b>54.007</b>	suction inlet
30	<b>AC0343582</b>	suction inlet cover
31	<b>C44-E</b>	nozzle hose
32	<b>A07</b>	suction fitting collar
33	<b>AG0893000</b>	motor cord
34	<b>AA9933109</b>	warning label
35	<b>B324-0400</b>	handle fitting
36	<b>4240056</b>	set screw
37	<b>4240806</b>	set screw
38	<b>54.050</b>	cord holder
39	<b>4240896</b>	set screw
40	<b>B211-0230</b>	bag support collar
41	<b>C33</b>	filter support screen
42	<b>C32-A</b>	secondary filter
43	<b>N24</b>	filter bag support
44	<b>C30-A</b>	motor cover filter
45	<b>C31</b>	motor cover seal
46	<b>54.003B</b>	motor cover
47	<b>A732-8305</b>	set screw
48	<b>B333-0600</b>	temperature switch seal
49	<b>B33-0400</b>	temperature switch
50	<b>B33-0700-C</b>	temperature wire
51	<b>A732-0700</b>	set screw
52	<b>B123-0100</b>	wire connector
53	<b>B210-0414</b>	rear wheel decal
54	<b>B210-0214</b>	rear wheel
55	<b>A732-6400</b>	washer
56	<b>3010056</b>	e-ring
57	<b>AE1063005</b>	rear wheel shaft
58	<b>4230525</b>	set screw
59	<b>AA0453000</b>	wire connector
60	<b>4230296</b>	set screw
61	<b>4230326</b>	set screw
62	<b>AF0063000</b>	main switch
63	<b>AE0193713</b>	switch activator
64	<b>AE0203713</b>	switch mounting plate

ref#	order	description
65	<b>AE1243713</b>	washer
66	<b>AE0213713</b>	washer
67	<b>AC0553006</b>	switch activator spring
68	<b>AG0883000</b>	wire connector
69	<b>2027129</b>	zip tie
70	<b>AG0863000</b>	zipper tie
71	<b>54.001B</b>	switch cover
72	<b>AA0463320</b>	switch cover seal
73	<b>54.002B</b>	dust cover
74	<b>AE0073714</b>	dust cover gasket
75	<b>460PB</b>	paper bag
76	<b>AA0533320</b>	dust compartment side seals
77	<b>54.005B</b>	nozzle housing
78	<b>AA0073582</b>	plastic sleeve housing
79	<b>AF0013002</b>	clear lens
80	<b>AF9933000</b>	topper mark
81	<b>A03</b>	furniture guard, black
82	<b>A430-0305</b>	washer
83	<b>A09</b>	felt packing
84	<b>B017-1200</b>	vented support fitting
85	<b>09.104</b>	belt
86	<b>B020-0100</b>	pedal frame
87	<b>54.041</b>	belt cover
88	<b>B020-0400</b>	pedal spring
89	<b>AA0143582</b>	foot pedal release
90	<b>54.016</b>	pedal, black
91	<b>A732-0200</b>	e-clip
92	<b>B020-0300</b>	pedal frame shaft
93	<b>AA1123582</b>	motor mount, rear, only 1-stage motor
94	<b>20.010</b>	Lamb motor 1-stage
95	<b>AE0303006</b>	motor mount sleeve
96	<b>54.047</b>	motor mount
97	<b>B123-1900</b>	sound suppresser
98	<b>C012-0000</b>	pinned brushroll assembly complete
99	<b>B012-0214</b>	rubber end cover, left
100	<b>B012-0700</b>	left cover
101	<b>B012-0600</b>	felt cover
102	<b>08.008</b>	bearing
103	<b>B08S</b>	agitator bearing holder
104	<b>B012-0300</b>	agitator core
105	<b>B012-0900</b>	agitator brush, 9.0mm
106	<b>B07S</b>	agitator pulley
107	<b>B624-0100</b>	spacing spring
108	<b>B012-0800</b>	right cover
109	<b>B012-0114</b>	rubber end cover, right
110	<b>B012-1000</b>	agitator shaft
111	<b>A732-0400</b>	spring clip
112	<b>54.006</b>	bottom plate assembly
113	<b>AA0203001</b>	bottom plate
114	<b>AA0255000</b>	packing lower plate assembly
115	<b>B010-1014</b>	base plate wheel
116	<b>B010-0500</b>	base plate wheel pin
117	<b>A732-2100</b>	push on spring nuts
118	<b>AA0263001</b>	bottom plate set screw
119	<b>A28</b>	reflector plate
120	<b>AF0103000</b>	bulb socket SS-29096, 75W 125V
121	<b>4600016</b>	washer
122	<b>4230016</b>	set screw
123	<b>5110013</b>	light bulb-slimline, 20V 15W
124	<b>AB0033000</b>	insulate plate
125	<b>AB0083000</b>	wire bushing
126	<b>AB0093000</b>	reflector plate
127	<b>AF0043006</b>	reflector plate supporter
128	<b>4240306</b>	set screw
129	<b>AB0053000</b>	light assembly cord

\* call for pricing and availability