

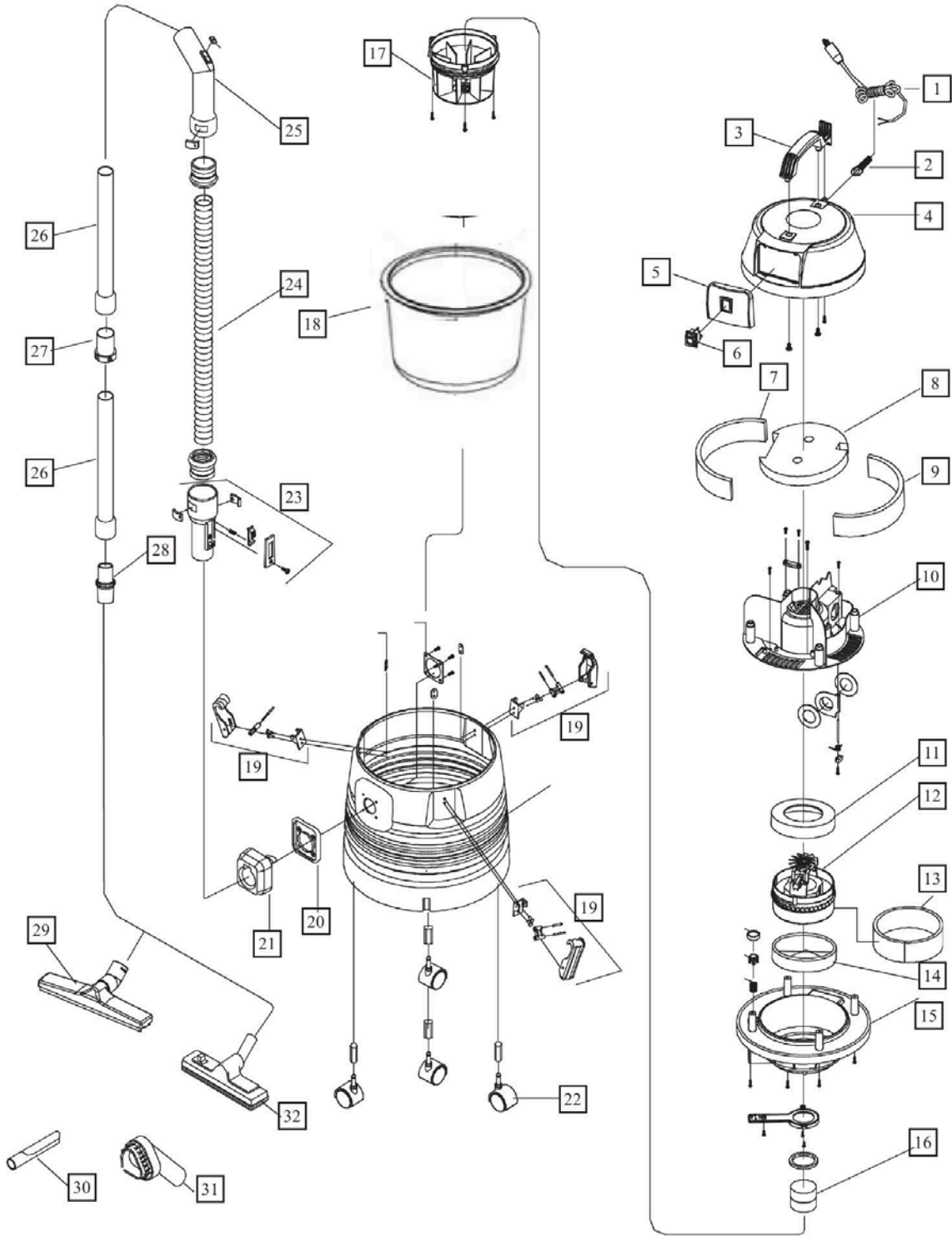
Powr-Flite[®]

WET/DRY VACUUM PF51 PARTS LIST



**WARNING: OPERATOR MUST READ AND UNDERSTAND THIS MANUAL
COMPLETELY BEFORE OPERATING THIS EQUIPMENT.**

SCHEMATICS - PARTS LISTS



SCHEMATICS - PARTS LISTS

No.	Part No.	Qty	Description
1	WD88	1	Power Cord
2	WD214	1	Strain Relief
3	WD20	1	Handle
4	WD89	1	Top Cover
5	WD156	1	Front Cover
6	WD101	1	Switch
7	WD91	1	Left Foam Gasket
8	WD90	1	Top Foam Gasket
9	WD92	1	Right Foam Gasket
10	3292AA-11	1	Middle Seat
11	WD51	1	Holder
12	WD15	1	Vacuum Motor
13	WD93	1	Bottom Foam Gasket
14	WD68	1	Lower Motor Gasket
15	WD96	1	Motor Holder
16	WD99	1	Float
17	WD164	1	Float Cage
18	WD102	1	Filter
19	WD43	3	Latch Assembly
20	WD255	1	Rubber Gasket
21	WD254	1	Suction Coupler
22	WD105	4	Caster Wheel
23	WD152	1	Hose End Complete
24	WD111	1	Complete HOse Aeembly (Includes Items 23 & 25)
25	WD15	1	Bend Connector
26	WD106	2	Wand Extention
27	WD194	1	Wand Connector
28	WD178	1	Tool Adapter
29	WD30A	1	Squeegee Nozzle Assembly (Replacement Blade = WD130 (2 Required))
30	WD110	1	Crevice Tool
31	WD109	1	Dust Brush
32	WD108	1	Floor Tool
	WD103	1	Tank w/Wheels PF51

Powr-Flite Warranty Statement

All Powr-Flite equipment has been tested and inspected at the factory and is guaranteed to be free from defects in material and workmanship for the duration described below. For full details, contact your authorized Powr-Flite Distributor, Service Center, or the Powr-Flite Technical Service Department.

5 Years - Tanks

2 Years - Motors

1 Year - Parts/Labor

IMPORTANT WARRANTY CONDITIONS:

Warranty starts from the date of sale to the consumer or, at Powr-Flite's discretion, six months after the dealer has purchased the unit from Powr-Flite, whichever comes first. All non-wear parts purchased after machine warranty expiration are warranted for one year. Proof of purchase is required to process all claims. Powr-Flite sales and service representatives are not authorized to waive, alter, or increase the terms of this warranty.

Warranty DOES NOT cover the following:

- Routine wear and tear items such as brushes, filters, points, plugs, bulbs, switches, brooms, wheels/tires, casters, fuses, belts, hoses, and sheer pins/motor couplings.
- Damage that occurs during shipping. A claim should be filed directly with the carrier to collect damages.
- Unauthorized machine modifications or parts not purchased directly from Powr-Flite or an authorized reseller.
- Failure to properly inspect, maintain, operate, and store the machine. Misuse/abuse is determined at Powr-Flite's sole discretion and examples include damage from pressure washing the machine, exposing the machine to rain, cold, or snow, and damage to the vacuum motor caused by failure to use defoamer.
- Cleaning and refinishing charges or machine downtime. Rentals and other replacement machines are not available from Powr-Flite during the repair period.

Powr-Flite[®]

A Tacony Company

3101 Wichita Court • Fort Worth, TX 76140-1755

1-800-880-2913 • Fax: 1-817-551-0719