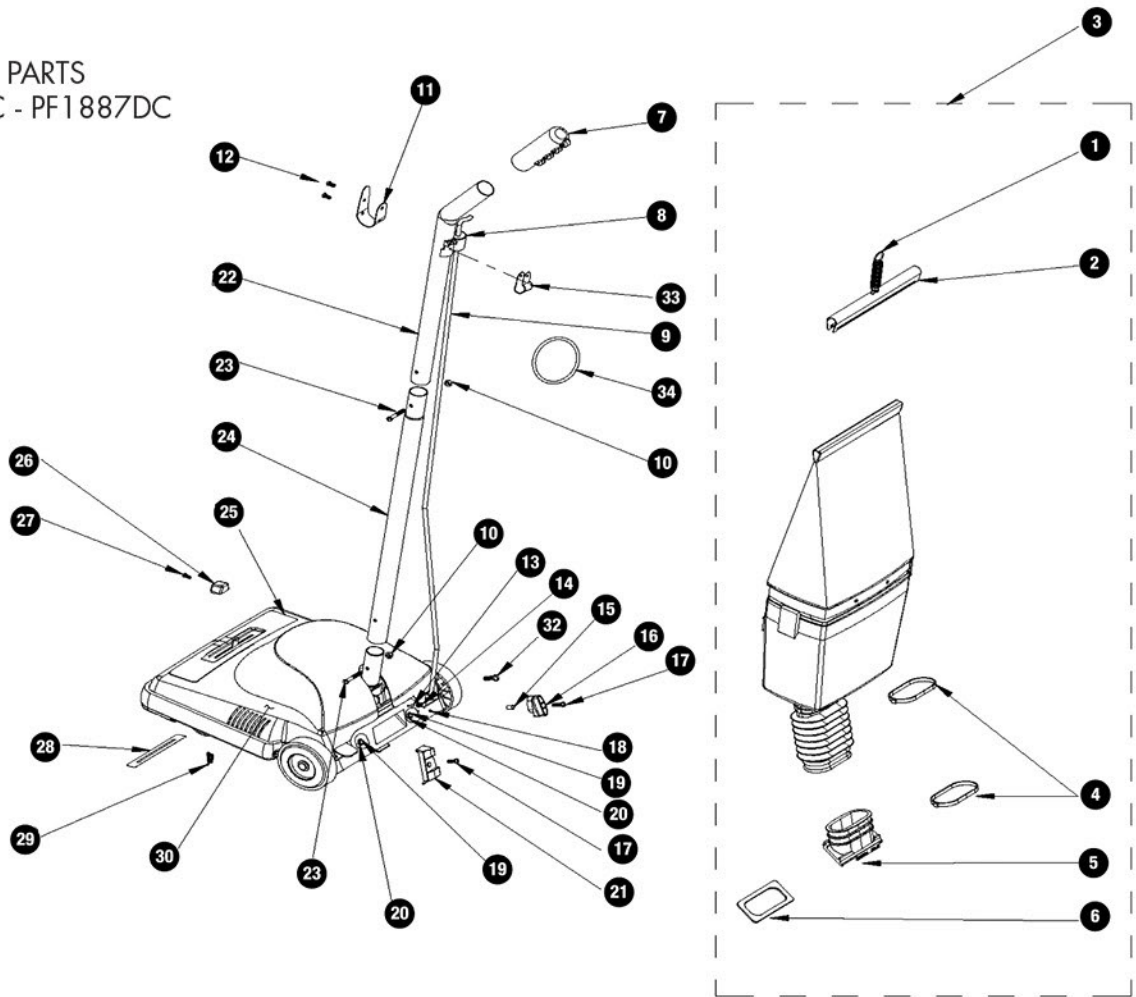
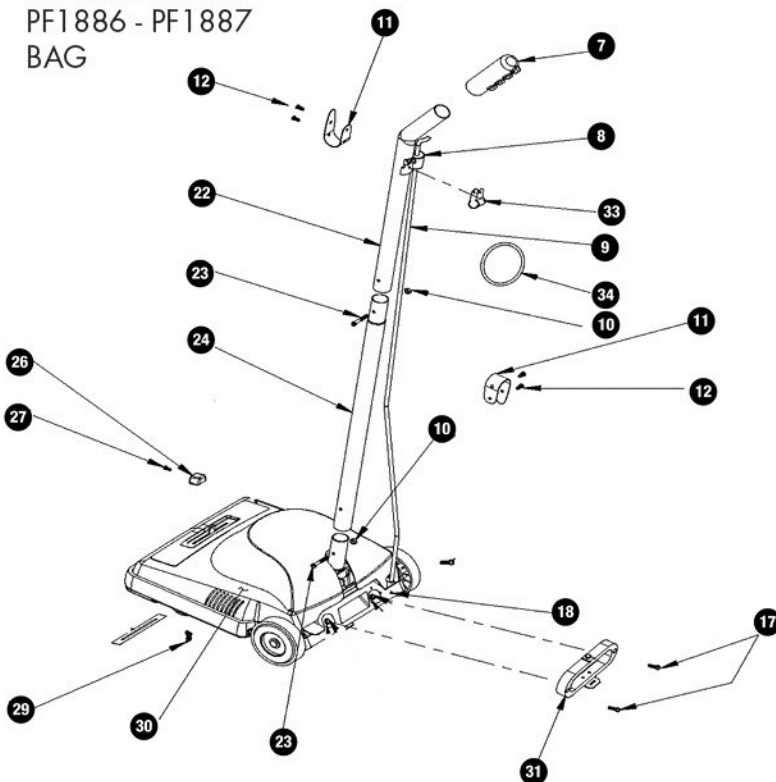


EXTERNAL PARTS
PF1886DC - PF1887DC
DIRT CUP



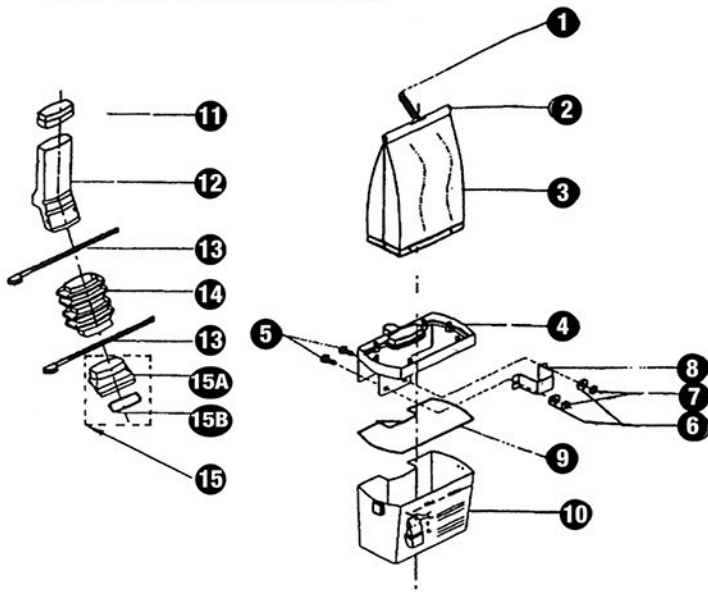
EXTERNAL PARTS
PF1886 - PF1887
BAG



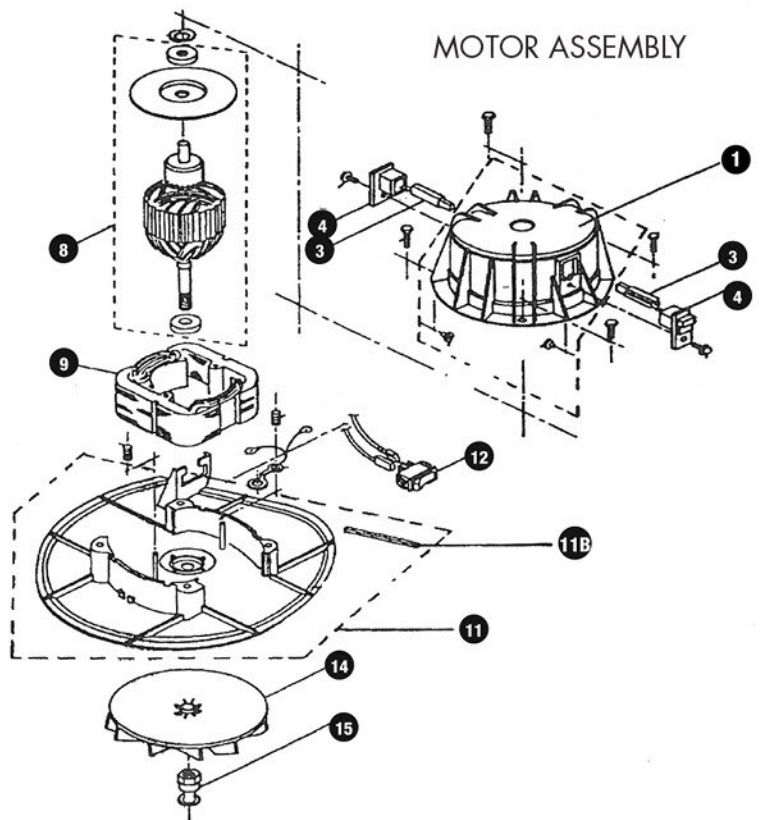
ref#	item #	description
EXTERNAL PARTS		
1	MV76	bag spring
2	MV77	bag clip
3	MV72	dust cup assembly
4	MV88	cable tie
5	MV91	bag coupling
6	MV92	coupling gasket
9	M1377	vacuum cord, SJT, black, 50'
10	MV17A	handle nut, #10-32
	MV17	handle nut and insert pkg, old style
11	MV19	cord hook
12	MV45	screw, #10-3/8"
13	MV53	ball (dirt cup only)
14	MV57	knob spring (dirt cup only)
15	MV54	bag knob spacer (dirt cup only)
16	MV55	bag knob (dirt cup only)
17	MV56	screw, 10-32 x 3/4"
18	MV109	screw #6 x 5/16"
21	MV51	bag support (dirt cup only)
22	MV47	upper handle
23	MV16A	handle screw
24	MV48	lower handle
26	MV50	height knob
27	X8238	screw 6 x 3/8"
29	MV07	hood spring
30	MV62	12" hood
	MV97	16" hood
31	MV59	bag coupling (bag model only)
33	MV22	cord retainer
34	MVB	belt
NOT ILLUSTRATED		
	G825	Vibra-Clean, Vacuicide cloth bag w/ latch blue
	G828	Enviro-Clean tietex zipper bag blue
	265PB	Enviro-Clean paper bag 3pk
	266PB	Enviro-Clean paper bag 9pk
	W2363	bag slide and spring for G825

*call for pricing and availability of all referenced parts

DIRT CUP BAG ASSEMBLY



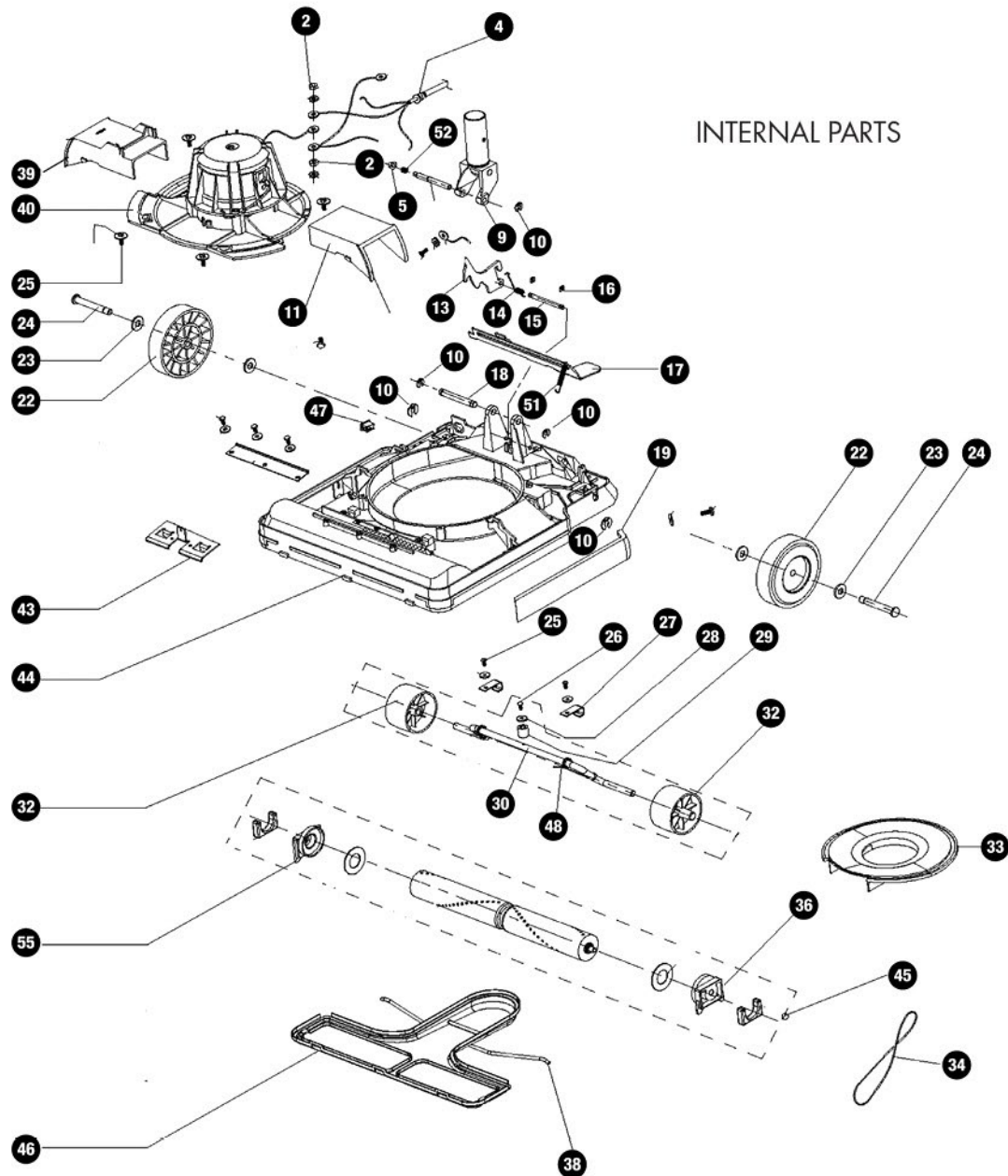
MOTOR ASSEMBLY



ref#	item #	description
DIRT CUP BAG ASSEMBLY		
1	MV76	bag spring
2	MV77	bag clip
3	MV78	bag assembly
4	MV93	cup frame
6	MV81	flat washer
7	MV82	hex nut 8-32
9	MV84	cup gasket
10	MV85	dirt cup assembly
11	MV86	upper hose seal
13	MV88	cable tie
14	MV89	dust cup hose
15	MV90	bag coupling gasket assembly
15A	MV91	bag coupling
15B	MV92	bag coupling gasket

ref#	item #	description
MOTOR ASSEMBLY		
1	MV64	motor cover
3	MV63	brush holder assembly
4	MV21	brush holder support
8	MV10	armature assembly
9	MV09	field assembly
11	MV27	motor base with gasket
11B	MV49	gasket, motor base
12	MV04A	rocker switch, small new style
	MV04	rocker switch, large old style
	MV02	fan
14	MV119	lexan fan kit s/n 0207 & higher
15	MV01	belt pulley nut

*call for pricing and availability of all referenced parts



ref#	item #	description
INTERNAL PARTS		
2	MV82	hex nut 8-32
4	MV40	strain relief
5	MV46A	switch actuator
9	MV20	handle socket
10	MV18	washer
11	MV71	left air duct
13	MV32	handle cam
14	MV33	cam spring
15	MV34	cam bolt
16	MV30	washer handle cam rod
17	MV36	foot pedal
19	MV58	bumper, PF1886, PF1886DC
	MV96	bumper, PF1887, PF1887DC
22	MV06	rear wheel
23	MV12A	flat washer
24	MV12	rear wheel axle
25	MV74	screw 8-32 x 1/2
26	MV67	type "V" rivet
28	MV68	flat washer
29	MV69	bushing
30	MV60	front axle assembly

ref#	item #	description
32	MV38	front wheel
33	MV15	fan cover
34	MVB	belt
36	MV13	L. bearing support
38	MV08	fan cover bar
39	MV70	right air duct
40	MV03	motor assembly
43	MV104	cam spring assembly
	MV41	12" chassis PF1886
	MV106	12" chassis PF1886DC
44	MV107	16" chassis PF1887
	MV95	16" chassis PF1887DC
45	MV11A	12" brush roll, PF1886, PF1886DC
	MV73	16" brush roll, PF1887, PF1887DC
46	MV23	12" bottom plate, PF1886, PF1886DC
	MV94	16" bottom plate, PF1887, PF1887DC
47	MV04A	rocker switch, small new style
	MV04	rocker switch, large
51	MV37	foot pedal spring
52	MV35	spring, switch shaft
55	MV13A	right bearing support
NOT ILLUSTRATED		
	MV49	motor gasket

*call for pricing and availability of all referenced parts