

Predator Automatic Scrubber 32

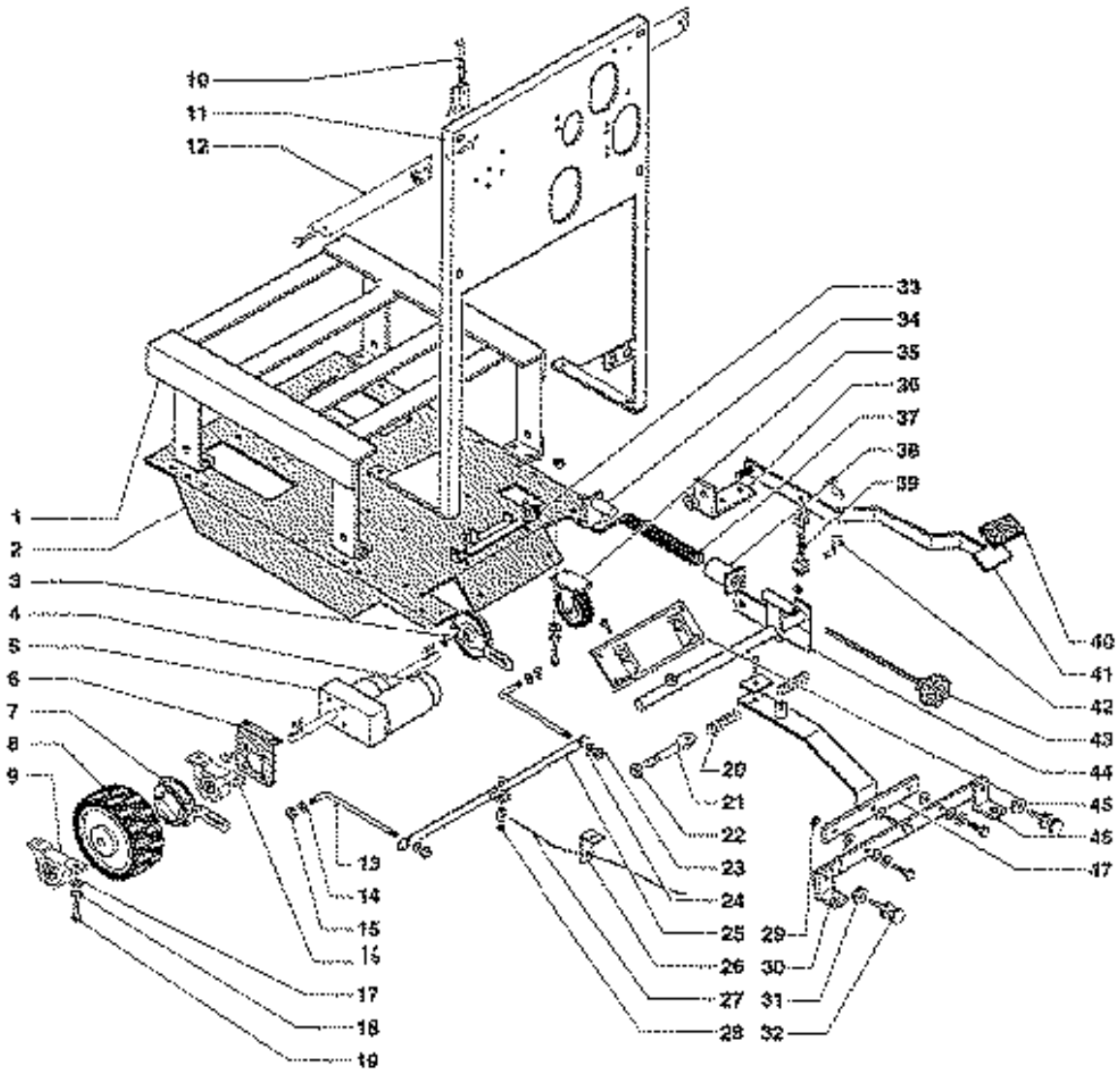
PARTS LIST

Model PAS32SHP

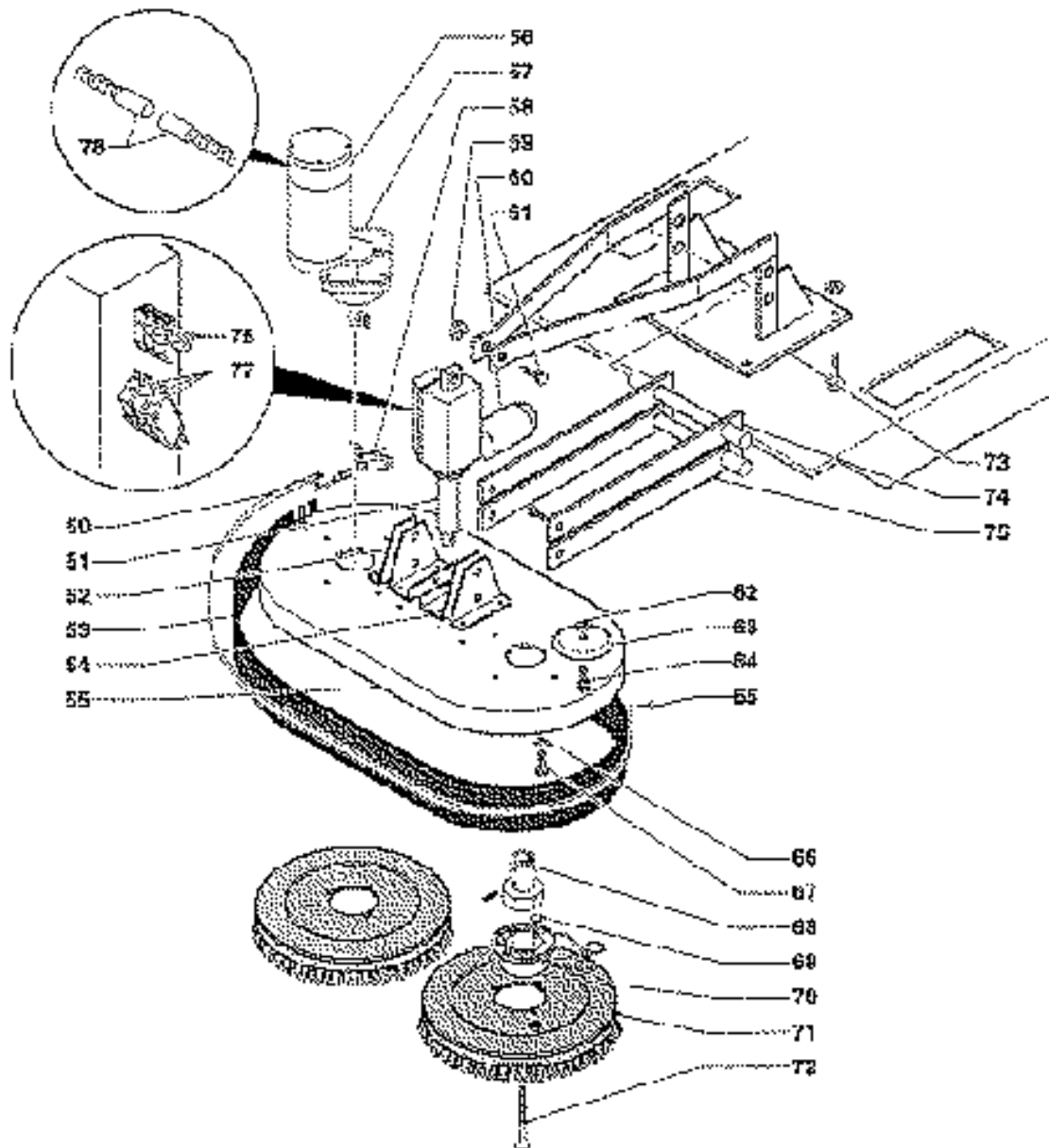


Contains drawings for all PAS32SHP models to date

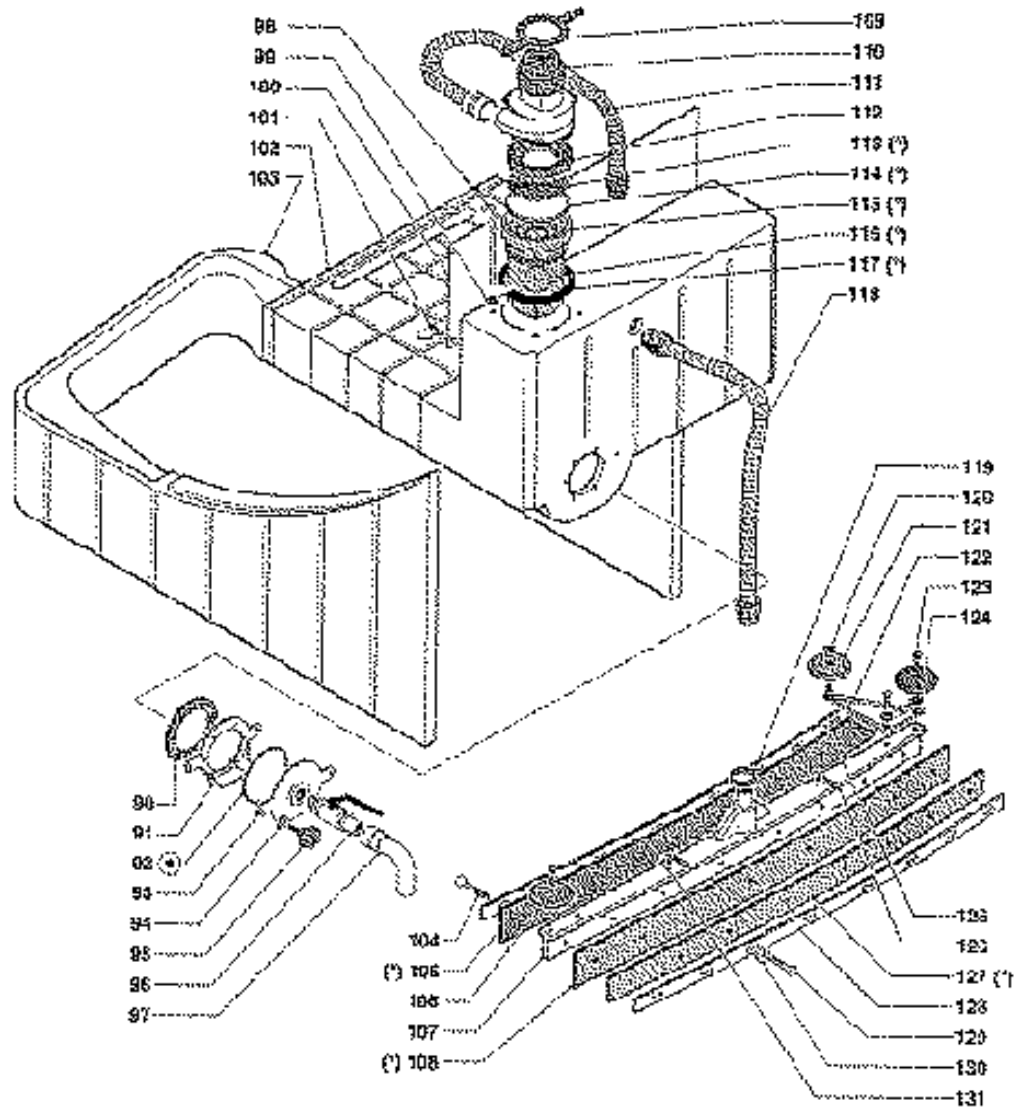
WARNING: OPERATOR MUST READ AND UNDERSTAND THIS MANUAL COMPLETELY BEFORE OPERATING THIS EQUIPMENT.



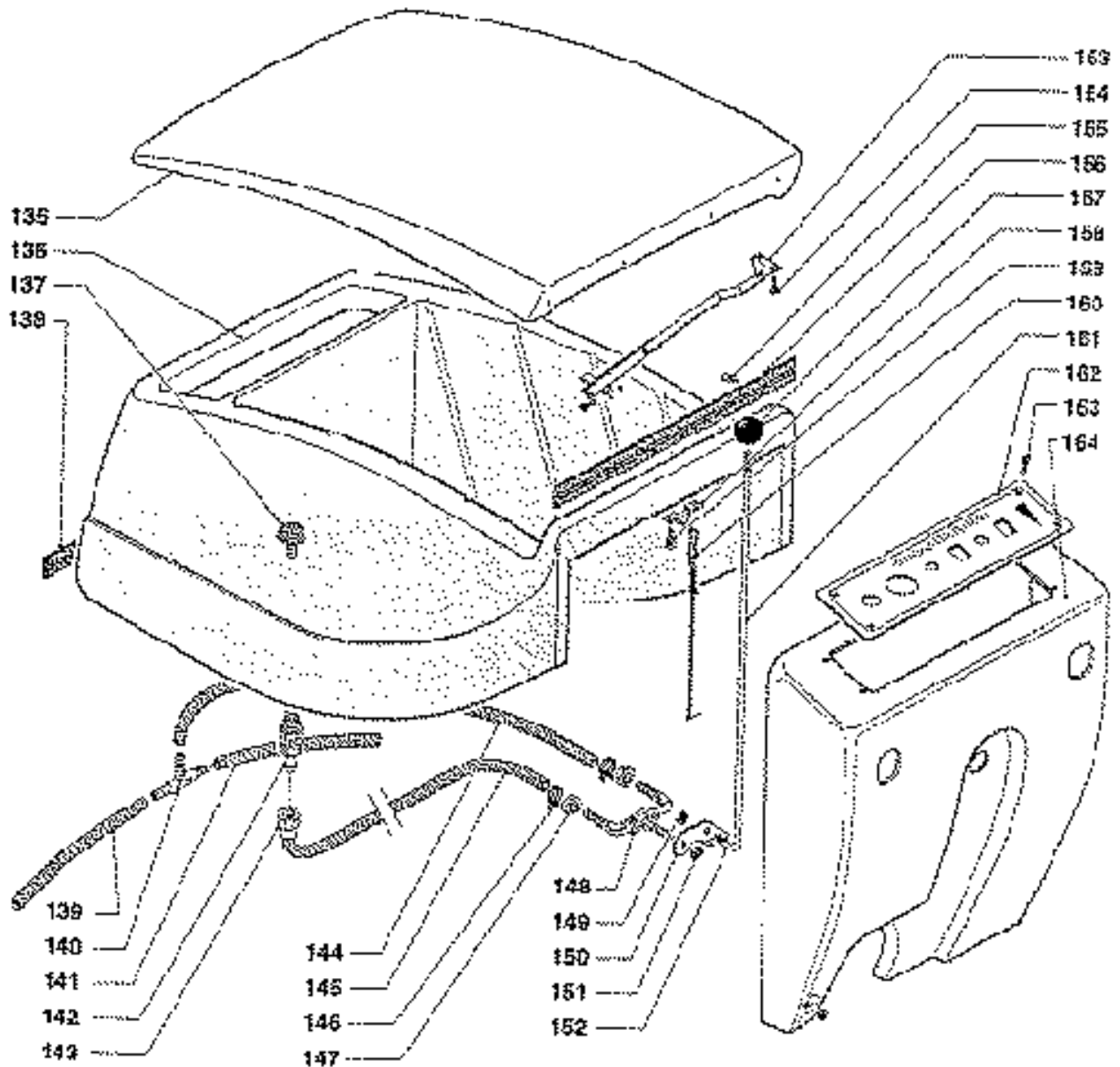
Pos	Part No.	Description	Pos	Part No.	Description
1	860.001	Support	24	860.024	Washer
2	860.002	Frame	25	860.025	Shaft
3	PAS900	Drum Brake	26	860.026	Yoke
4	PAS901	Motor, traction	27	PAS910	Cable, brake
5	PAS902	Differential gear	28	PAS173	Clamp
6	PAS903	Yoke	29	PAS911	Nut
7	PAS904	Drum Brake, left	30	PAS912	Washer, nylon
8	PAS905	Wheel, traction	31	PAS33	Ring Nut
9	PAS906	Bearing and housing	32	PAS34	Regulator
10	PAS132	Hook	33	860.033	Support
11	860.011	Back Frame	34	860.034	Support with Spring
12	860.003	Yoke	35	PAS913	Swivel Castor
13	860.013	Rod	36	700.030	Bracket
14	860.014	Washer	37	PAS914	Spring, squeegee
15	860.015	Nut	38	PAS915	Stop, spring
16	PAS61	Bearing and housing	39	PAS916	Tie Rod
17	PAS188	Washer	40	PAS917	Pedal Cover
18	PAS907	Lockwasher	41	860.041	Pedal
19	PAS190	Screw	42	PAS918	Pin
20	PAS908	Spring	43	860.043	Screw
21	PAS909	Tie Rod	44	860.044	Lever
22	PAS176	Nut	45	860.045	Support
23	860.023	Nut	46	860.046	Support
			47	860.047	Lever



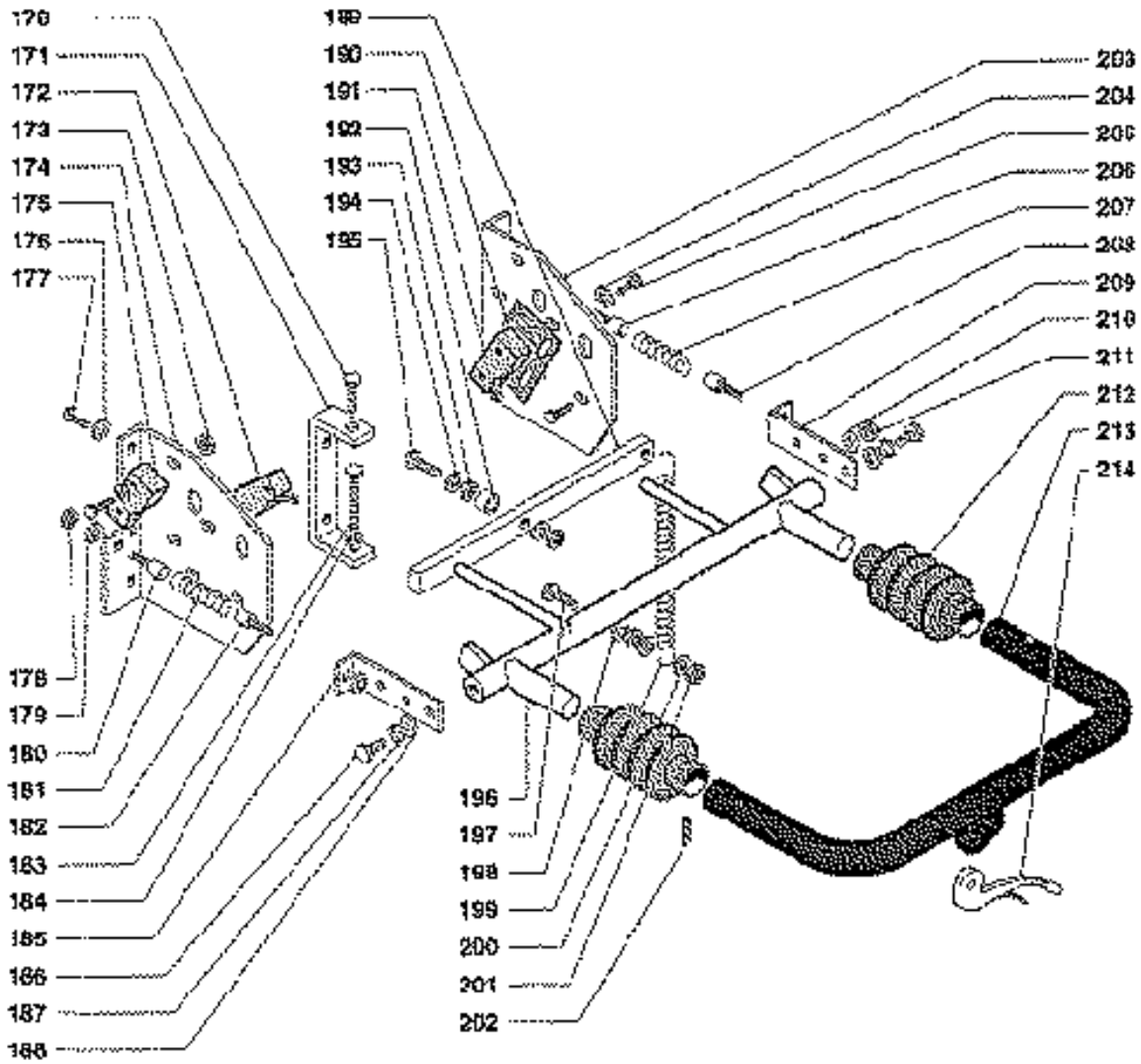
Pos	Part No.	Description	Pos	Part No.	Description
50	PAS919	Strap, bumper	67	PAS927	Screw
51	PAS920	Pressure Drive	68	PAS5	Coupling
52	860.052	Bracket	69	PAS65	Screw
53	PAS921	Splash Guard	70	PAS6A	Support with Spring
54	860.054	Plate	71	PAS962	Poly-Scrub .028 Dia. Scrub Brush Nylon
55	860.055	Support		PAS963	Nylo-Grit .050 Dia. 80 Grit HD Clean and Strip
56	PAS922	Motor, brush drive		PAS964	Strata-Grit .060 Dia. 46 Grit Concrete Cleaning
57	PAS956	Gear Unit		PAS961	Drive Block
58	PAS122	Hook		PAS965	Powr-Scuff .018 Dia. 500 Grit Gen Scrub
59	PAS923	Nut, pressure drive		PAS966	Powr-Scrub II .022 Grit Deep Scrub
60	PAS957	Motor, pressure	72	PAS111	Coupling Screw
61	PAS958	Screw	73	860.073	Support
62	PAS924	Nut	74	860.074	Superior Lever
63	PAS1	Buffer Wheel	75	860.075	Inferoir Lever
64	PAS925	Screw	76	860.076	Cam
65	PAS926	Screw	77	PAS928	Micro Switch
66	PAS146	Washer	78	PAS929	Carbon Brush



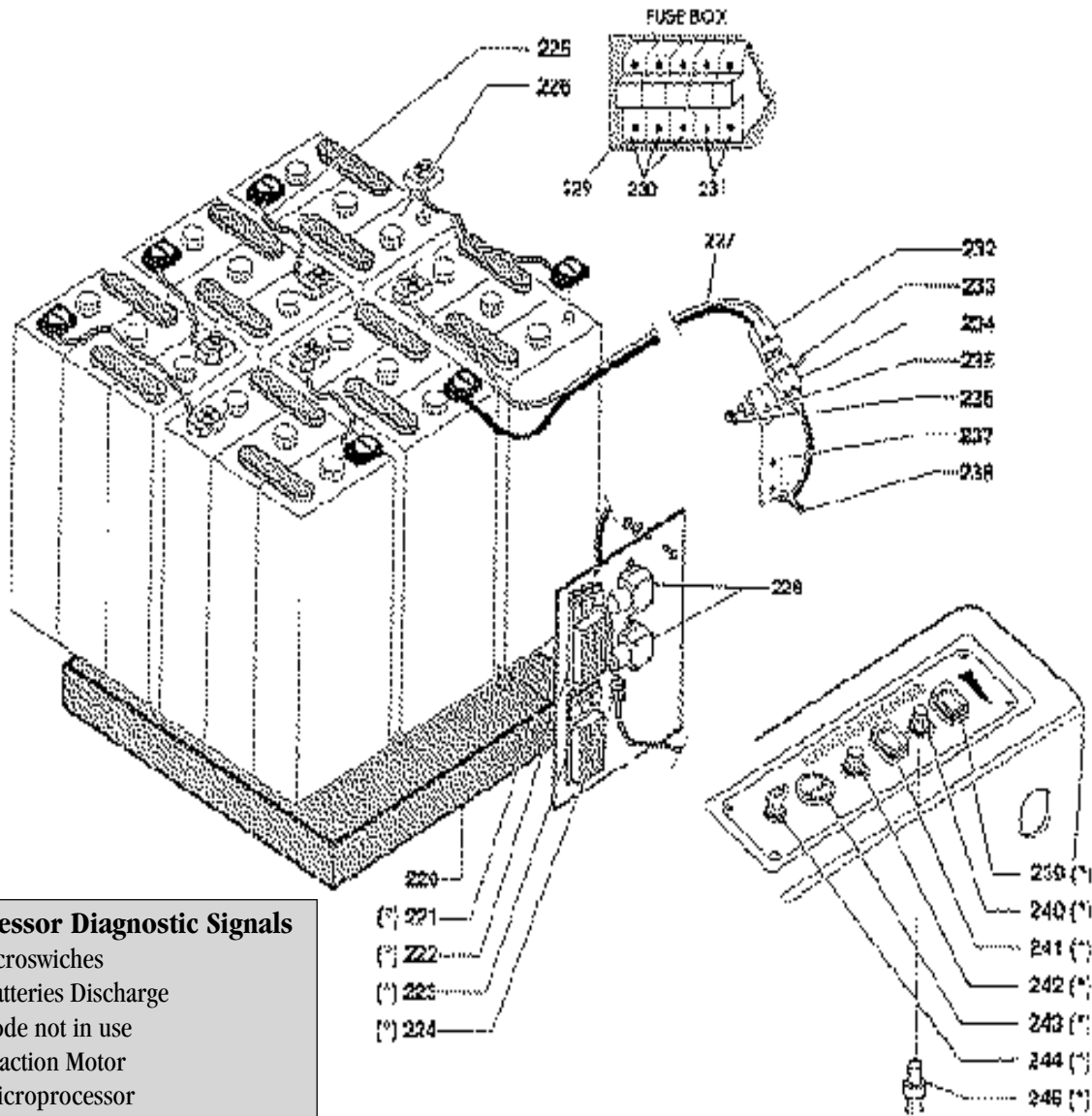
Pos	Part No.	Description	Pos	Part No.	Description
(°)	PAS17	Complete Float Level	109	PAS15	Lock Ring
(*)	PAS930	Kit, Squeegee 3 piece	110	1932A	Vac Motor, 2 stg, 36V
90	PAS70	Gasket	111	PAS37	Flex Hose
91	PAS71	Fixed Flange	112	PAS102	Motor Gasket
92	PAS72	Gasket	113	F909	Filter Screen (includes pos. 114)
93	PAS73	Movable Flange	115	PAS85	Support
94	PAS186	Washer	116	500.094	Float Level
95	PAS174	Knob	117	PAS103	Gasket
96	PAS75	Dump Valve	118	PAS80	Intake Hose
97	PAS187	Elbow, Drain	119	PAS191	Hose Collars
98	PAS150	Tie Rod	120	PAS935	Nut
99	PAS146	Washer	121	PAS1	Bumper Wheel
100	860.100	Screw	122	850.278	Right Vibration Damper
101	PAS147	Screw	123	PAS936	Screw
102	PAS204	Vacuum Tank	124	PAS937	Nut
103	860.103	Housing Collar	125	PAS938	Outer Bar, Squeegee
104	PAS223	Screw	126	PAS959	Spring Clip, Squeegee
105	PAS931	Black Rubber, Squeegee	127	PAS939	Squeegee Stiffener
106	PAS1	Bumper Wheel	128	PAS959	Outer Bar, Rear
107	PAS932	Squeegee Frame	129	PAS223	Screw
108	PAS933	Squeegee Main Blade	130	PAS941	Washer
			131	PAS942	Spring Clip, Squeegee



Pos	Part No.	Description	Pos	Part No.	Description
135	PAS943	Lid	150	500.051	Lever
136	PAS944	Solution Tank	151	430.078	Nut
137	PAS3	Filter	152	700.161	Rod
138	860.138	Hinge	153	PAS84	Support
139	860.138	Hose	154	700.154	Screw
140	PAS82	Hose Converter	155	700.155	Screw
141	PAS945	Hose, Solution	156	PAS948	Lid Hinge
142	PAS83	Quick Connection, Male	157	PAS11	Knob
143	PAS947	Quick Connection, Female	158	700.158	Support
144	PAS946	Hose, Solution	159	430.056	Screw
145	860.154	Hose	160	700.160	Hook, Cord
146	430.091	Hose Clamp	161	PAS155	Rod
147	400.161	Nut	162	PAS949	Control Panel
148	PAS12	Solution Valve	163	PAS153	Screw
149	PAS146	Nut	164	860.164	Housing, Rear



Pos	Part No.	Description	Pos	Part No.	Description
170	860.170	Nut	193	430.168	Nut
171	850.444	Support	194	430.171	Washer
172	PAS56	Micro Switch	195	430.173	Screw
173	430.296	Nut	196	850.487	Handle Frame
174	850.468	Handle Support, Left	197	PAS197	Screw
175	PAS56	Micro Switch	198	PAS146	Washer
176	PAS146	Washer	199	850.455	Spring
177	430.072	Screw	200	PAS146	Washer
178	430.078	Nut	201	430.078	Nut
179	PAS146	Washer	202	PAS148	Dowel
180	700.182	Screw	203	850.496	Handle Support, Right
181	850.445	Spring	204	430.297	Washer
182	700.182	Screw	205	430.299	Screw
183	650.372	Screw	206	700.182	Screw
184	PAS176	Nut	207	850.445	Spring
185	850.446	Screw	208	700.182	Screw
186	430.173	Screw	209	850.446	Square
187	500.136	Lockwasher	210	700.182	Screw
188	PAS188	Washer	211	430.078	Nut
189	850.454	Yoke	212	650.423.1	Bellows, Handle
190	860.190	Rubber Tube	213	850.484	Handle
191	PAS56	Micro Switch	214	PAS166	Brake Lever
192	850.447	Spacer			



Microprocessor Diagnostic Signals

- 1) 1 Light: Microswitches
- 2) 2 Lights: Batteries Discharge
- 3) 3 Lights: Code not in use
- 4) 4 Lights: Traction Motor
- 5) 5 Lights: Microprocessor
- 6) 6 Lights: Potentiometer
- 7) 7 lights: Microprocessor overheated
- 8) 8 Lights: The traction motor is moving
- 9) 9 Lights: Problem with software

Pos	Part No.	Description	Pos	Part No.	Description
(°)	860.248	Wiring	232	PAS59	Connection
(*)	860.247	Panel Plant	233	430.299	Screw
220	PAS950	Battery Tray	234	PAS59	Connection
221	860.221	Support	235	430.297	Washer
222	PAS951	Micro Processor Speed Control	236	430.296	Nut
223	PAS952	Micro Processor Pressure Control	237	630.328	Yoke
224	PAS119	Fuse 6.3 amp	238	430.072	Screw
225	PAS141	Cable	239	PAS54	Switch
226		6 volt, 244 amp Battery (not supplied) 6 Required	240	PAS88	Knob
227	PAS140	+/- Cable with Connection	241	PAS54	Brush Switch
229	850.409	Remote Control	242	PAS88	Knob
230	PAS118	20 amp Cylinder Fuse	243	PAS955	Battery Guage
231	PAS117	16 amp Cylinder Fuse	244	PAS53	Key Switch
			245	PAS55	Potentiometer



A Tacony Company

3101 Wichita Court • Ft. Worth, TX 76140-1710