

Powr-Flite[®]

PARTS LIST

Predator Corded Automatic Scrubber

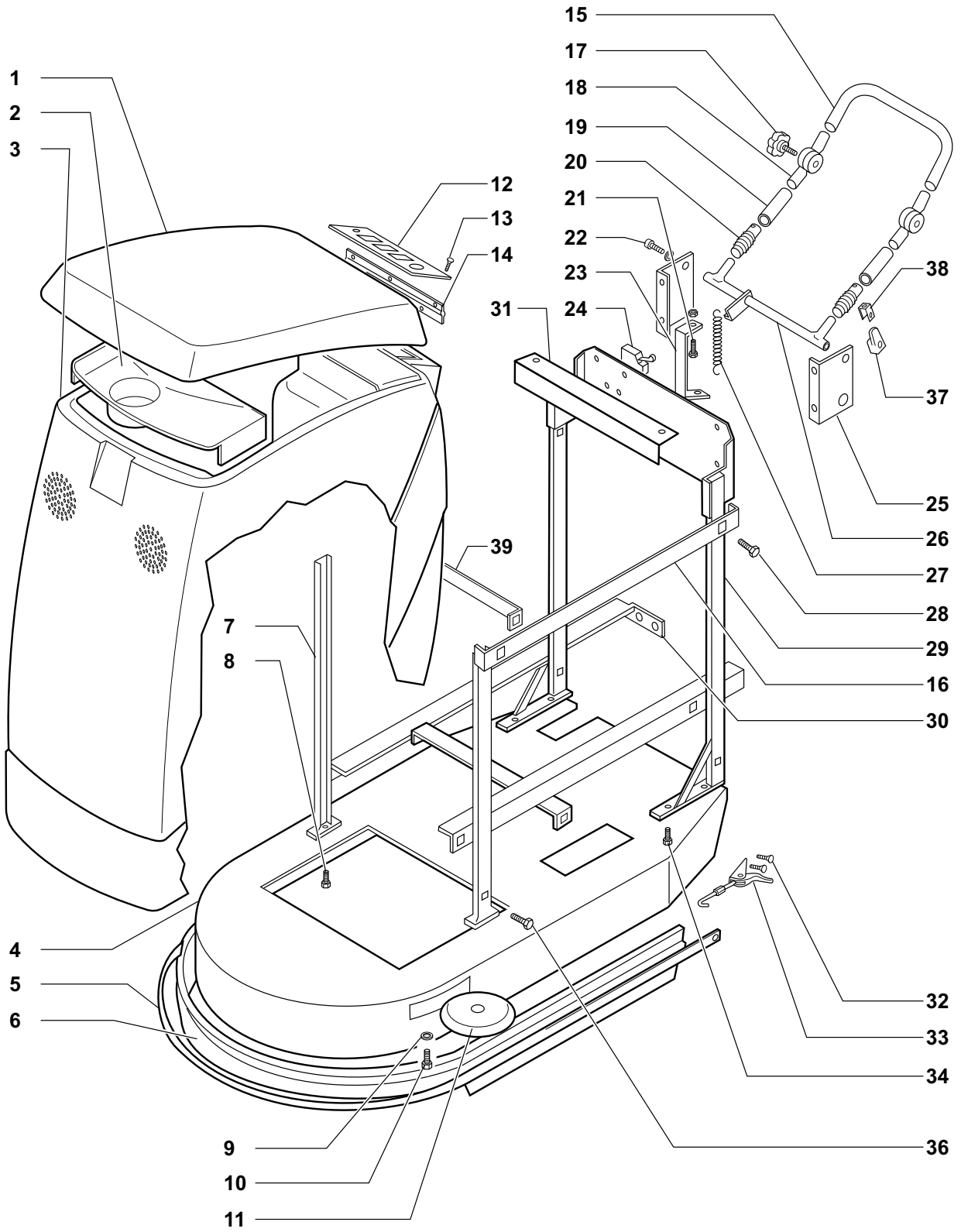
Model: PAS20E



**WARNING: OPERATOR MUST READ AND UNDERSTAND THIS MANUAL
COMPLETELY BEFORE OPERATING THIS EQUIPMENT.**

Save These Instructions

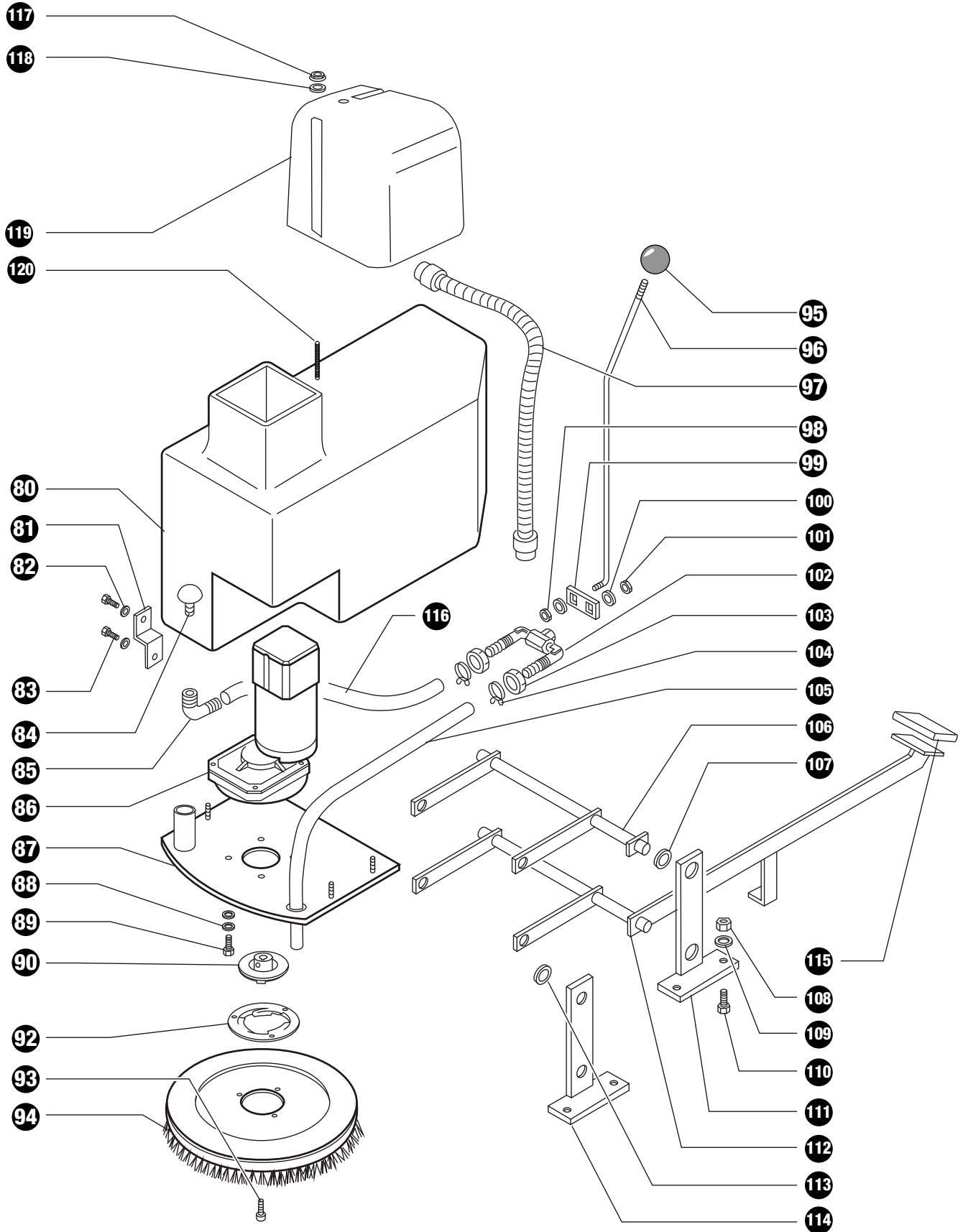
PAS20E FRAME



PAS20E FRAME

No.	Part No.	Qty	Description
1	PAS275	1	Cover
2	501.002.1	1	Funnel
3	501.003.1	1	Housing
4	PAS800	1	Frame
5	501.052	1	Bumper Strip
6	PAS2BA	1	Splash Guard
7	501.013	4	Frame Brace
8	PAS167	4	Screw
9	430.015	4	Washer
10	430.016	4	Screw
11	PAS1	1	Bumper Wheel
12	503.012	1	Control Panel
13	PAS153	2	Screw
14	PAS109	1	Hinge
15	430.323.2	1	Handle
16	501.022	2	Cross Member
17	PAS337	2	Knob
18	PAS339	2	Coupling
19	PAS338	2	Handle
20	PAS335	2	Bellows
21	501.027	2	Screw
22	PAS167	2	Screw Trans Support
23	501.028.1	2	Support
24	PAS56	1	Microswitch
25	501.033	2	Square
26	PAS158	1	Handle Lever
27	PAS329	1	Spring Handle
28	PAS147	2	M6 Bolt
29	501.038	1	Panel
30	431.042	2	Yoke
31	503.031	1	Support
32	PAS465	4	Screw
33	PAS122	1	Hook & Latch Assembly
34	PAS167	1	Screw Trans Support
36	PAS147	4	M6 Bolt
37	PAS267	1	Cord Holder
38	503.038	1	Yoke
39	501.023	1	Yoke

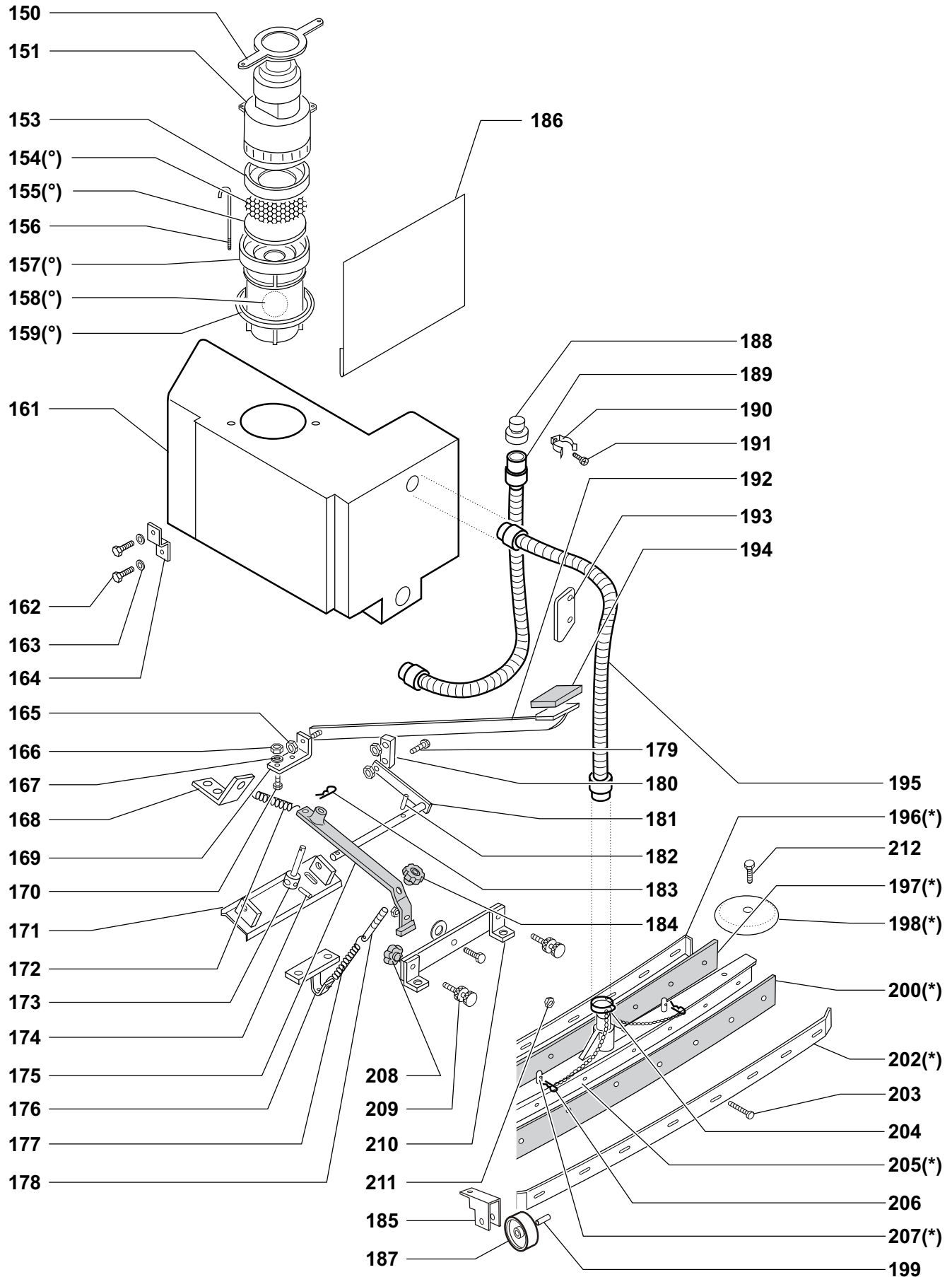
PAS20E BRUSH HEAD



PAS20E BRUSH HEAD

No.	Part No.	Qty	Description
80	501.087.1	1	Solution Tank
81	501.086	1	Plate
82	ER320	2	Washer
83	PAS147	2	M6 Bolt
84	PA53	1	Filter
85	PAS296	1	Hose Fitting
86	PAS305	1	Brush Motor and Gearbox
87	501.090	1	Plate
88	ER320	4	Washer
89	PAS162	4	Screw M16 x 12
90	PAS24	1	Coupling
92	PAS23	1	Spin On Clutch Plate
93	PAS111	1	Coupling Screw 5/16-20 x 1-3/8
94	500.171	1	Brush
94	500.171.1	1	Tynex Brush
94	500.171.2	1	Steel Brush
94	500.171.3	1	Vegetable Brush
94	500.178.3	1	Pad Holder
95	PAS11	1	Knob
96	PAS151	1	Rod
97	PAS288	1	Solution Hose 4'
98	PAS268	1	Split Pin
99	PAS269	1	Lever
100	PAS270	2	Washer
101	PAS271	1	Lever Nut
102	PAS12	1	Solution Valve
103	PAS262	2	Nut
104	PX42	2	Hose Clamp
105	PAS288	1	Solution Hose 4'
106	PAS204	1	Upper Lever
107	410.064	1	Washer
108	430.117	2	Nut
109	PAS188	2	Washer
110	PAS167	2	Screw
111	430.119	1	Support
112	PAS203	1	Lower Lever
113	410.063	1	Washer
114	PAS466	1	Nut
115	PAS14	1	Foot Pedal Cover
116	503.116	1	Pipe
117	PAS304	1	M6 Self Locking Nut
118	710.166	1	Washer
119	503.119	1	Cover
120	510.051	1	Tie Rod

PAS20E SQUEEGEE and VACUUM MOTOR



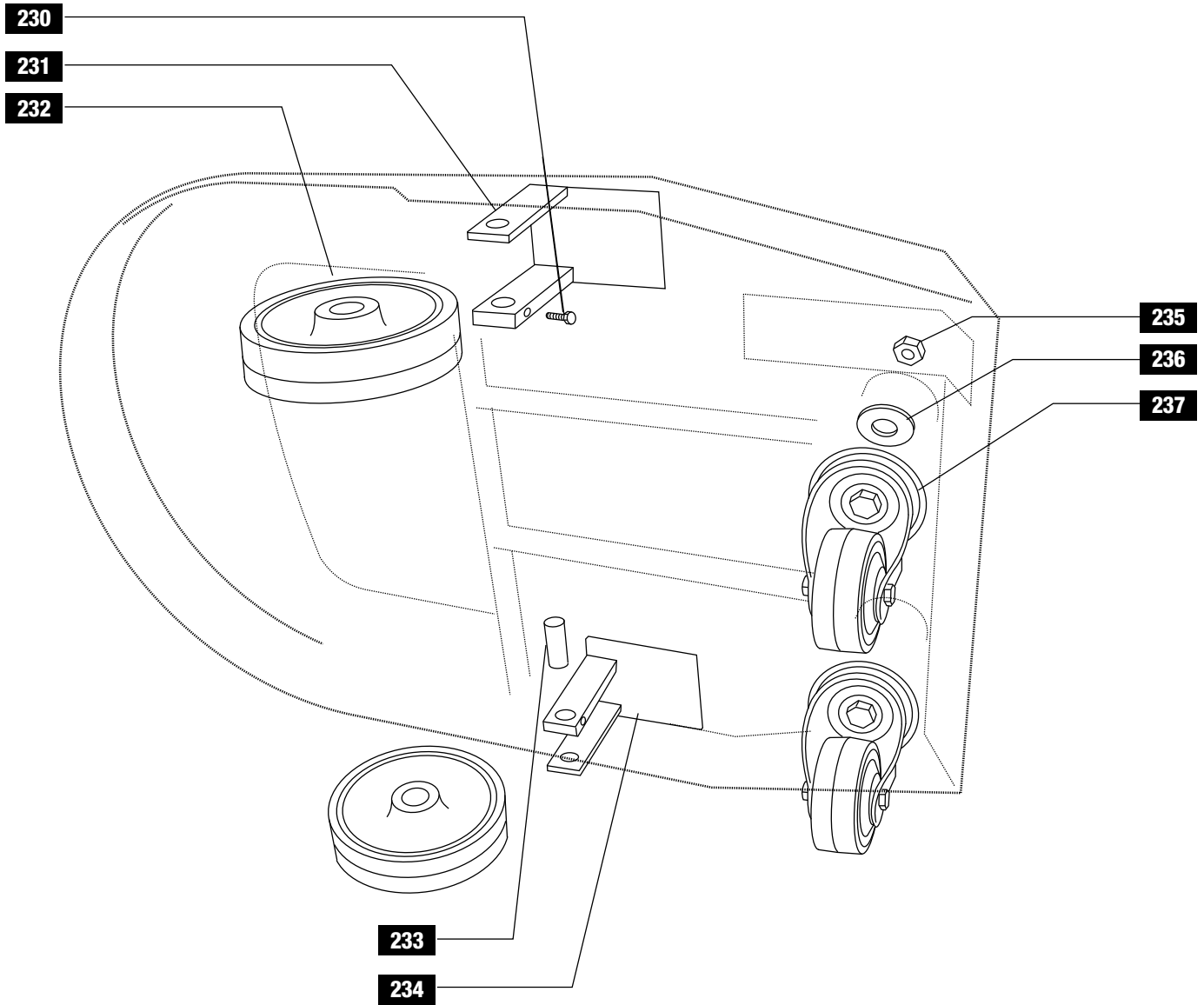
PAS20E SQUEEGEE and VACUUM MOTOR

No.	Part No.	Qty	Description
(°)	PAS17	1	Float Assembly
150	PAS15	1	Motor Lock Ring
151	350.010.P	1	Suction Motor 120V
153	PAS102	1	Motor Gasket
154	06.169	1	Screen Filter
155	PAS107	1	Motor Support Filter
156	410.105.1	1	Tie Rod
157	500.068.E	1	Support
158	500.094	1	Float
159	PAS103	1	Float Seal
(*)	500.228.1		Complete Squeegee Assembly
161	503.161	1	Recovery Tank
162	PAS147	2	M6 Bolt
163	ER320	2	Washer
164	501.086	1	Plate
165	501.177	2	Nut
166	PAS189	1	Nut
167	PAS188	1	Washer
168	431.248	1	Angle Mounting
169	501.180	1	Angle Mounting
170	PAS167	1	Screw
171	501.184	1	Bracket
172	PAS329	1	Spring
173	PAS19	1	Squeegee Mount Pin
174	PAS197	1	Screw M6 x 45
175	PAS184	1	Lever
176	PAS403	1	Bracket
177	PAS329	1	Spring
178	PAS32	1	Tie rod w/Single Hole
179	PAS197	2	Screw M6 x 45
180	PAS265	1	Cross Member
181	PAS459	1	Squeegee Lever
182	PAS280	1	Roll Pin 6mm x 25mm
183	PAS266	1	Split Pin
184	PAS35	1	Squeegee Pressure Knob
185	510.204	2	Bracket
186	PAS105	1	Tank Plate
187	PAS379	2	Wheel
188	PAS36	1	Drain Hose Plug
189	PAS37	1	Drain Hose
190	PAS38	1	Hose Clip
191	PAS507	1	Screw
192	501.210	1	Pedal
193	PAS259	1	Brush Pedal Bracket
194	PAS14	1	Foot Pedal Cover
196	PAS192	1	Front Squeegee Retainer
197	PAS142	1	Front Squeegee Blade
198	PAS1	2	Bumper Wheel
199	PAS382	2	Spacer

PAS20E SQUEEGEE and VACUUM MOTOR (Cont.)

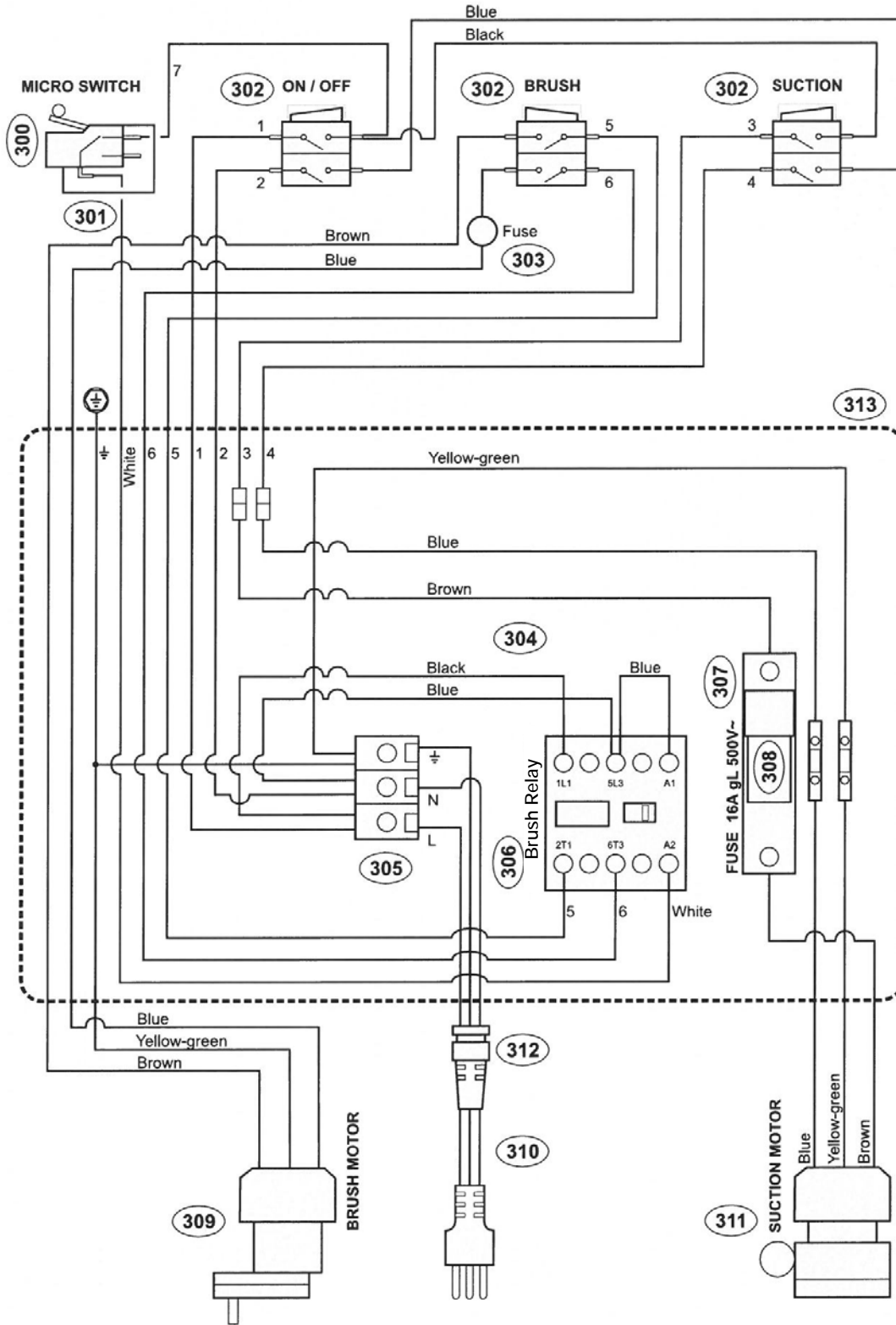
No.	Part No.	Qty	Description
200	PAS116	1	Rear Squeegee Blade
202	PAS196	1	Rear Squeegee Blade Retainer
203	PAS197	8	Screw M6 x 45
204	PAS191A	1	Hose Clamp
205	PAS194	1	Squeegee Body
206	PAS266	2	Split Pin
207	PAS193	2	Pin w/Hole
208	PAS33	2	Wing Nut (Knob)
209	PAS34	2	Squeegee Regulator
210	503.210	1	Squeegee Mount
211	PAS149	1	Nut
212	PAS936	2	Screw M10 x 40

PAS20E WHEEL ASSEMBLY



No.	Part No.	Qty	Description
230	PAS243	2	Screw Stainless
231	503.231	2	Support
232	350.168	2	Wheel
233	503.233	2	Pin
234	PAS321	2	Support
235	PAS207	2	Nut for caster - set, 1-large + 1-small
236	431.249	2	Washer
237	PAS51A	2	Castor, Swivel

PAS20E ELECTRICAL



PAS20E ELECTRICAL

No.	Part No.	Qty	Description
300	PAS56	1	Micro Switch
301	430.318.2	1	Micro Switch Cover
302	PAS125	3	Switch
303	410.188	1	Thermal Fuse 20A
305	PAS309	1	Connecting Board
306	503.306.P	1	Brush Relay
307	PAS954	1	Fuse Holder
308	PAS117	1	Fuse 16A
309	PAs305	1	Brush Motor
310	500.301	1	Cable
311	350.010P	1	Vacuum Motor 120V
312	PAS245	1	Strain Relief
313	503.313	1	IP55 Box

Powr-Flite Warranty Statement

All Powr-Flite equipment has been tested and inspected at the factory and is guaranteed to be free from defects in material and workmanship for the duration described below. For full details, contact your authorized Powr-Flite Distributor, Service Center, or the Powr-Flite Technical Service Department.

5 Years - Tanks
2 Years - Motors
1 Year - Parts/Labor

IMPORTANT WARRANTY CONDITIONS:

Warranty starts from the date of sale to the consumer or, at Powr-Flite's discretion, six months after the dealer has purchased the unit from Powr-Flite, whichever comes first. All non-wear parts purchased after machine warranty expiration are warranted for one year. Proof of purchase is required to process all claims. Powr-Flite sales and service representatives are not authorized to waive, alter, or increase the terms of this warranty.

Warranty DOES NOT cover the following:

- Routine wear and tear items such as brushes, filters, points, plugs, bulbs, switches, brooms, wheels/tires, casters, fuses, belts, hoses, and sheer pins/motor couplings.
- Damage that occurs during shipping. A claim should be filed directly with the carrier to collect damages.
- Unauthorized machine modifications or parts not purchased directly from Powr-Flite or an authorized reseller.
- Failure to properly inspect, maintain, operate, and store the machine. Misuse/abuse is determined at Powr-Flite's sole discretion and examples include damage from pressure washing the machine, exposing the machine to rain, cold, or snow, and damage to the vacuum motor caused by failure to use defoamer.
- Cleaning and refinishing charges or machine downtime. Rentals and other replacement machines are not available from Powr-Flite during the repair period.

Powr-Flite[®]

A Tacony Company

3101 Wichita Court • Fort Worth, TX 76140-1755

1-800-880-2913 • Fax: 1-817-551-0719