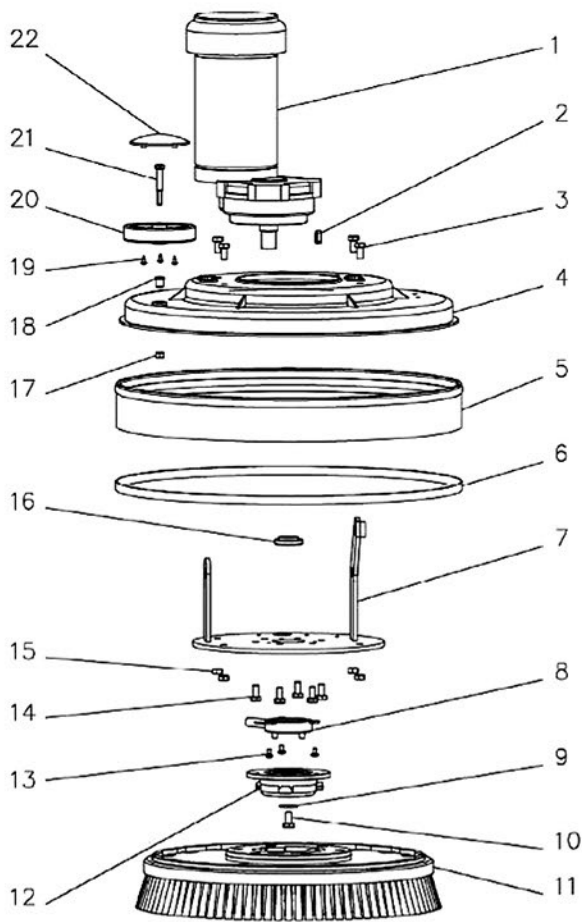
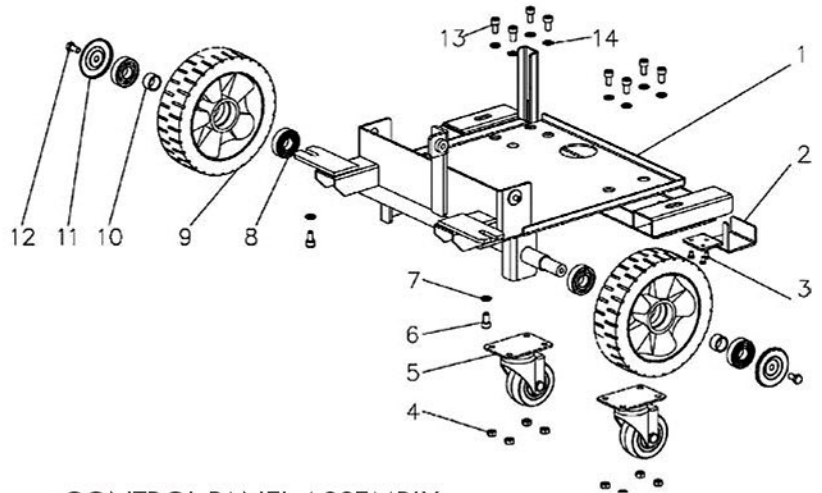


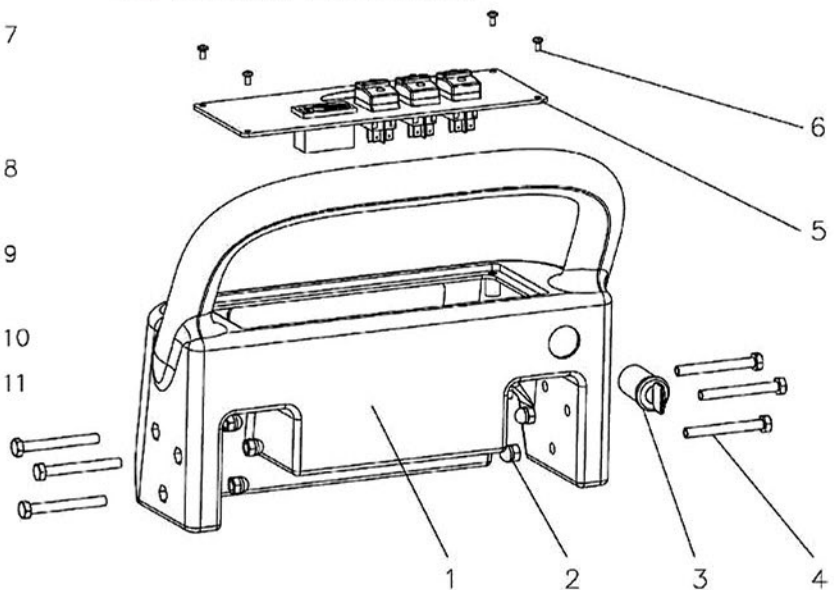
BRUSH ASSEMBLY



CHASSIS ASSEMBLY



CONTROL PANEL ASSEMBLY

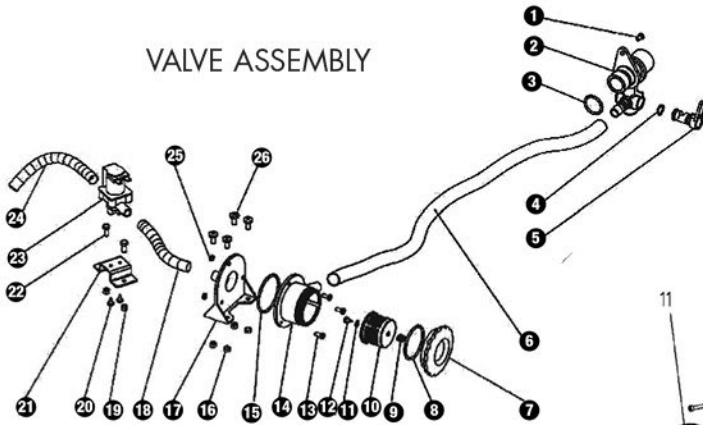


ref #	item #	description
CHASSIS ASSEMBLY		
1	33668	chassis
2	33669	bracket
3	33670	screw
4	33671	nut
5	33672	castor
6	33673	screw
7	33674	washer
8	33675	bearing
9	33676	wheel
10	33677	spacer
11	33678	cap
12	33679	bolt
13	33680	screw
14	33681	spring washer
BRUSH ASSEMBLY		
1	33682	brush motor
2	33683	key
3	33684	bolt
4	33685	cover
5	33686	skirt
6	33687	strap
7	33688	bracket
8	33689	water drain out
9	33690	washer

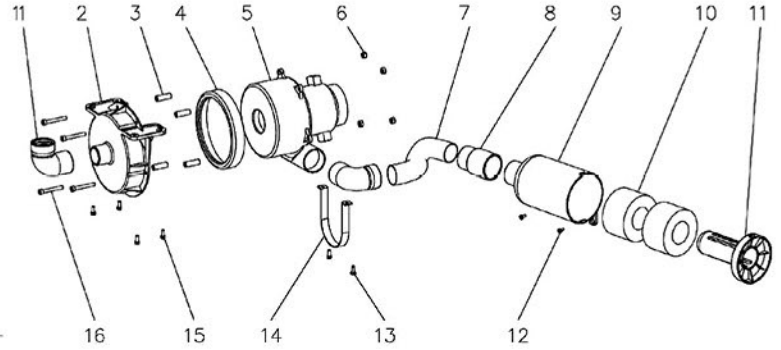
ref #	item #	description
10	33691	bolt
11	SF616	brush
12	33692	brush driver
13	33693	screw
14	33694	bolt
15	33695	nut
16	33696	spacer
17	33697	nut
18	33698	liner
19	33699	screw
20	33700	side pulley
21	33701	bolt
22	33702	lid
CONTROL PANEL ASSEMBLY		
1	33797	control box
2	33798	nut
3	33799	key switch assembly
4	33800	bolt
5	33801	control panel
6	33802	screw
NOT ILLUSTRATED		
	33400	circuit board
	33395	fuse

*call for pricing and availability of all referenced parts

VALVE ASSEMBLY



VACUUM MOTOR ASSEMBLY

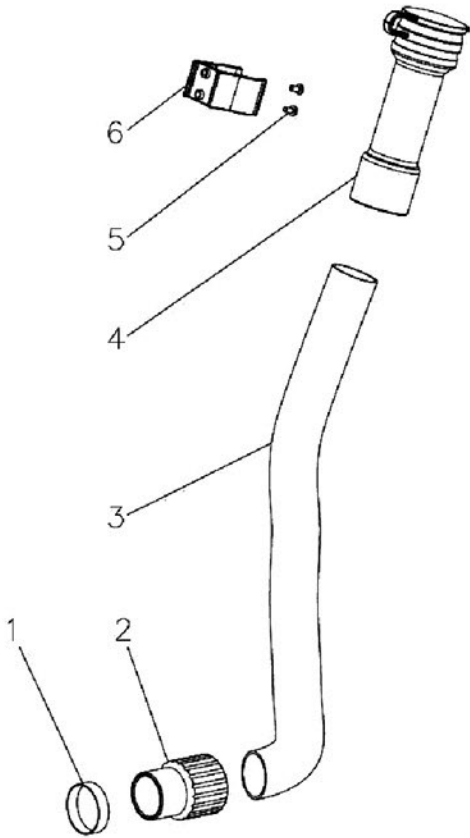


ref #	item #	description
VALVE ASSEMBLY		
1	33803	screw
2	33101	solution valve
3	33805	o-ring
4	33806	o-ring
5	33807	solution control lever
6	33808	hose
7	33809	cover
8	33810	o-ring
9	33811	spring
10	33812	filter
11	33813	washer
12	33814	screw
13	33815	screw
14	33816	filter support
15	33817	o-ring
16	33818	nut
17	33819	filter bracket
18	33820	hose
19	33821	nut
20	33822	screw
21	33823	bracket
22	33824	bolt
23	33825	solution solenoid valve
24	33826	hose
25	33827	nut
26	33828	screw

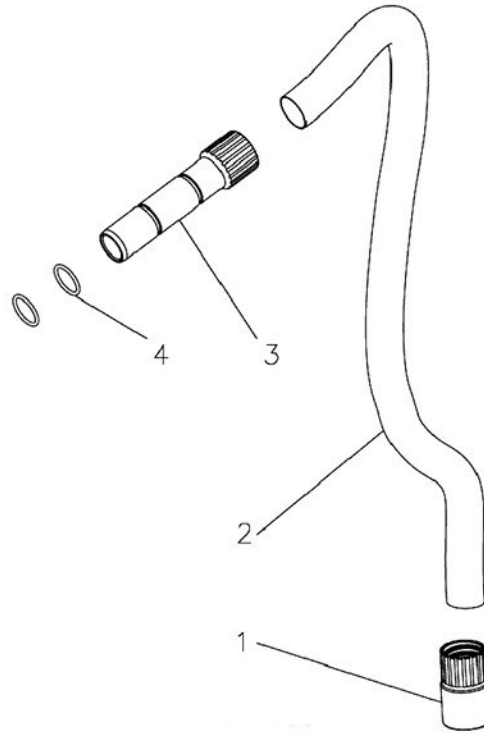
ref #	item #	description
VACUUM MOTOR ASSEMBLY		
1	33703	elbow
2	33704	bracket
3	33705	connector
4	33706	gasket
5	33707	vacuum motor
6	33708	nut
7	33709	hose
8	33710	sleeve
9	33711	muffler
10	33712	sponge
11	33713	core
12	33714	screw
13	33715	bolt
14	33716	spacer ring
15	33717	bolt
16	33718	bolt

*call for pricing and availability of all referenced parts

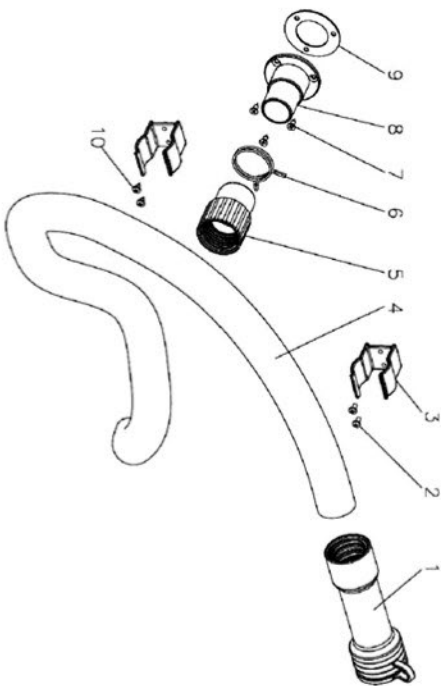
SOLUTION DRAIN HOSE ASSEMBLY



VACUUM HOSE ASSEMBLY



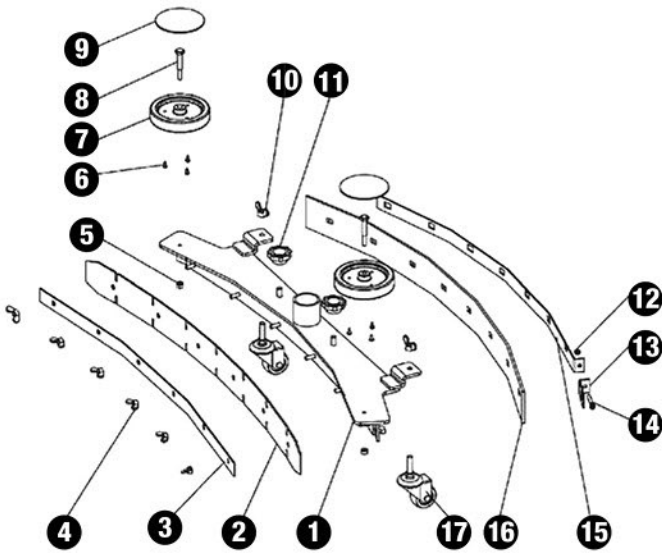
RECOVERY DRAIN HOSE ASSEMBLY



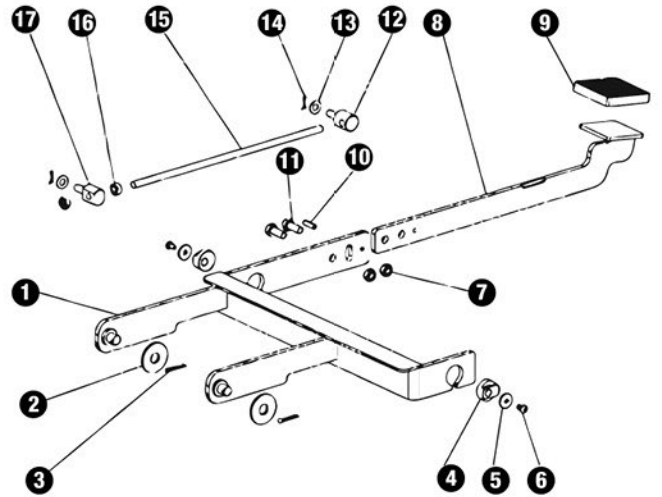
ref #	item #	description
VACUUM HOSE ASSEMBLY		
1	33829	sleeve
2	33830	hose
3	33831	sleeve
4	33832	o-ring
RECOVERY DRAIN HOSE ASSEMBLY		
1	33833	drain out plug
2	33834	screw
3	33835	hose clamp
4	33836	hose
5	33837	sleeve
6	33838	clamp
7	33839	screw
8	33840	base joint
9	33841	gasket
10	33842	screw
SOLUTION DRAIN HOSE ASSEMBLY		
1	33843	strap
2	33837	sleeve
3	33845	hose
4	33833	drain out plug
5	33847	screw
6	33848	clamp
NOT ILLUSTRATED		
	X9594	hose assembly

*call for pricing and availability of all referenced parts

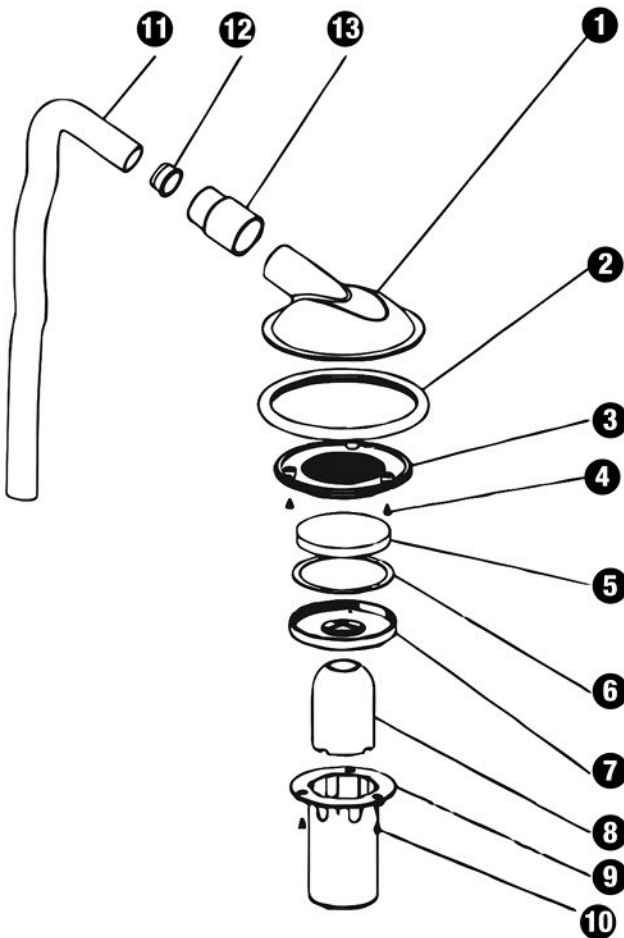
SQUEEGEE ASSEMBLY



LIFT ASSEMBLY



FLOAT ASSEMBLY



ref #	item #	description
-------	--------	-------------

LIFT ASSEMBLY

1	33732	lift
2	33733	washer
3	33734	pin
4	33735	eccentricity bushing
5	33736	washer
6	33737	screw
7	33738	nut
8	33739	pedal cover
9	33740	pedal
10	33741	spring clip
11	33742	bolts
12	33743	pin shaft
13	33744	washer
14	33745	cotter pin
15	33746	arm
16	33747	nut
17	33748	pin shaft

SQUEEGEE ASSEMBLY

1	33780A	squeegee assembly
2	33781	squeegee blades front
3	33782	squeegee blade strap front
4	33783	butterfly nut
5	33784	nut
6	33785	screw
7	33786	squeegee guide wheel
8	33787	bolt
9	33788	lid
10	33789	butterfly nut
11	33790	knob
12	33791	nut
13	33792	squeegee blades strap rear
14	33793	bolt
15	33794	strap rear
16	33795	squeegee blade rear
17	33796	caster

FLOAT ASSEMBLY

1	33719	top lid
2	33720	seal
3	33721	fitting mesh
4	33722	screw
5	33723	filter
6	33724	gasket
7	33725	cover
8	33726	float
9	33727	bucket
10	33728	screw
11	33729	hose
12	33730	hose liner
13	33731	sleeve

*call for pricing and availability of all referenced parts