

Powr-Flite®

PARTS LIST

AUTOMATIC SCRUBBER

PAS14G

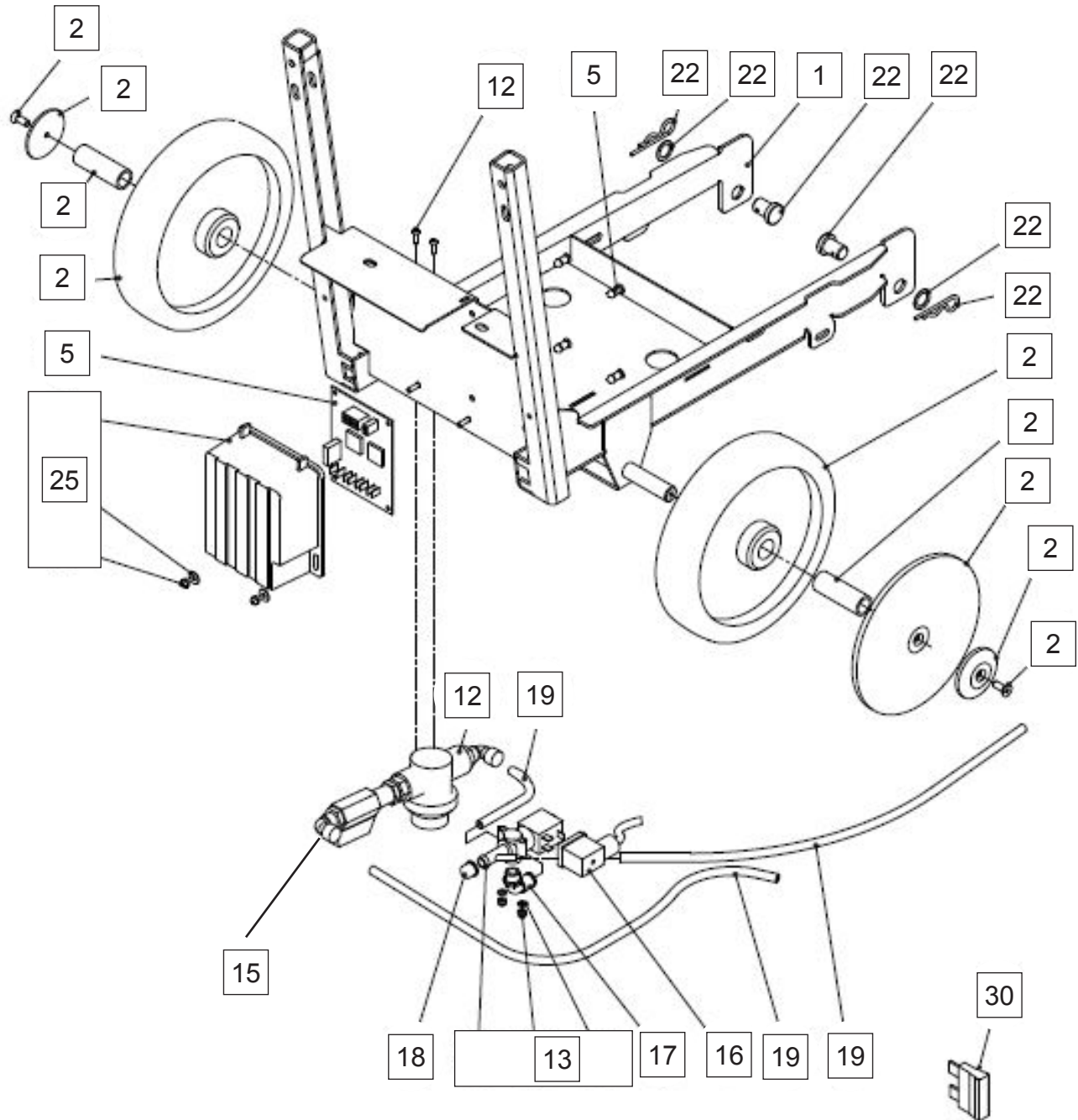


**WARNING: OPERATOR MUST READ AND UNDERSTAND THIS MANUAL
COMPLETELY BEFORE OPERATING THIS EQUIPMENT.**

Save These Instructions

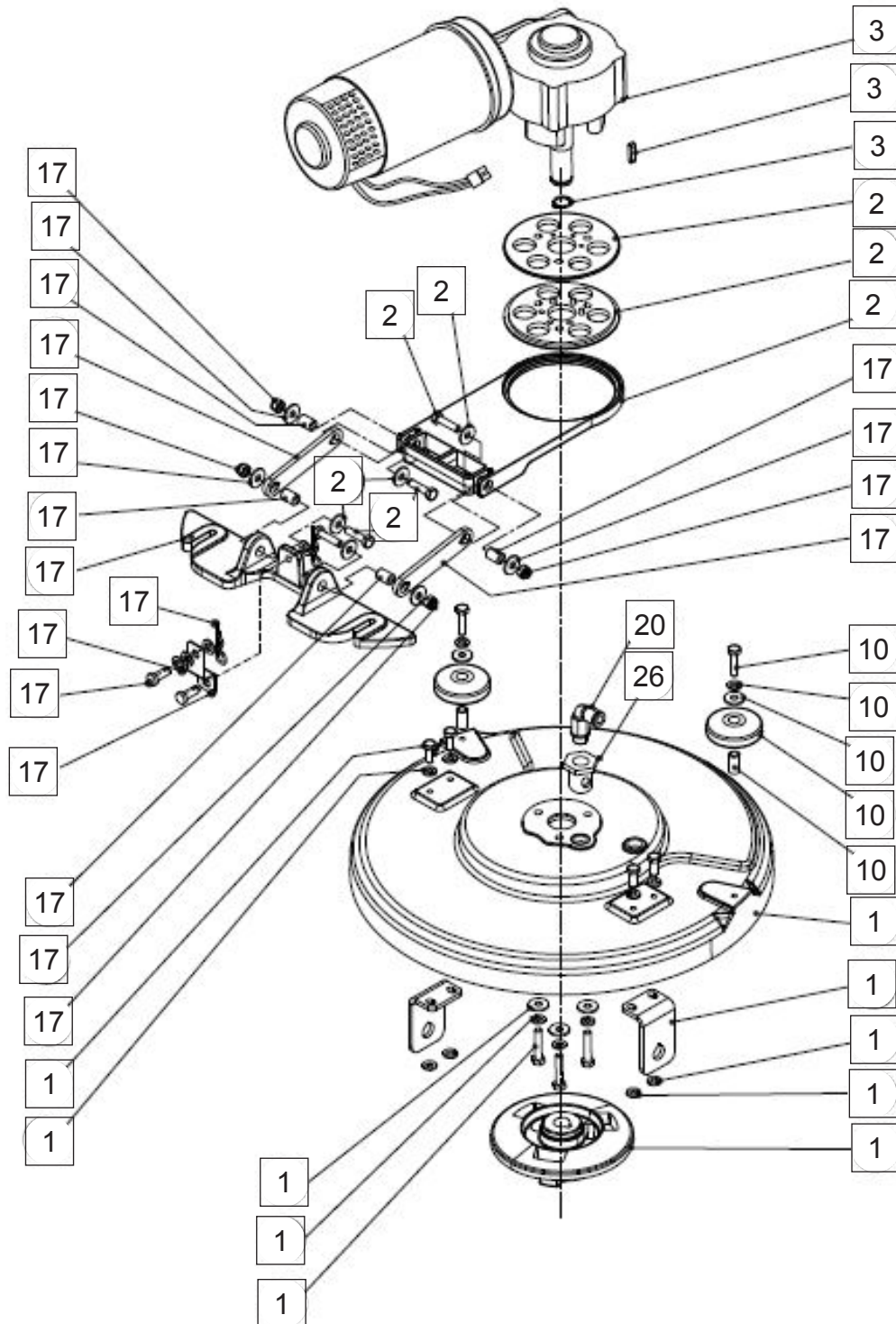
Automatic Scrubber Parts PAS14G

FRAME ASSEMBLY



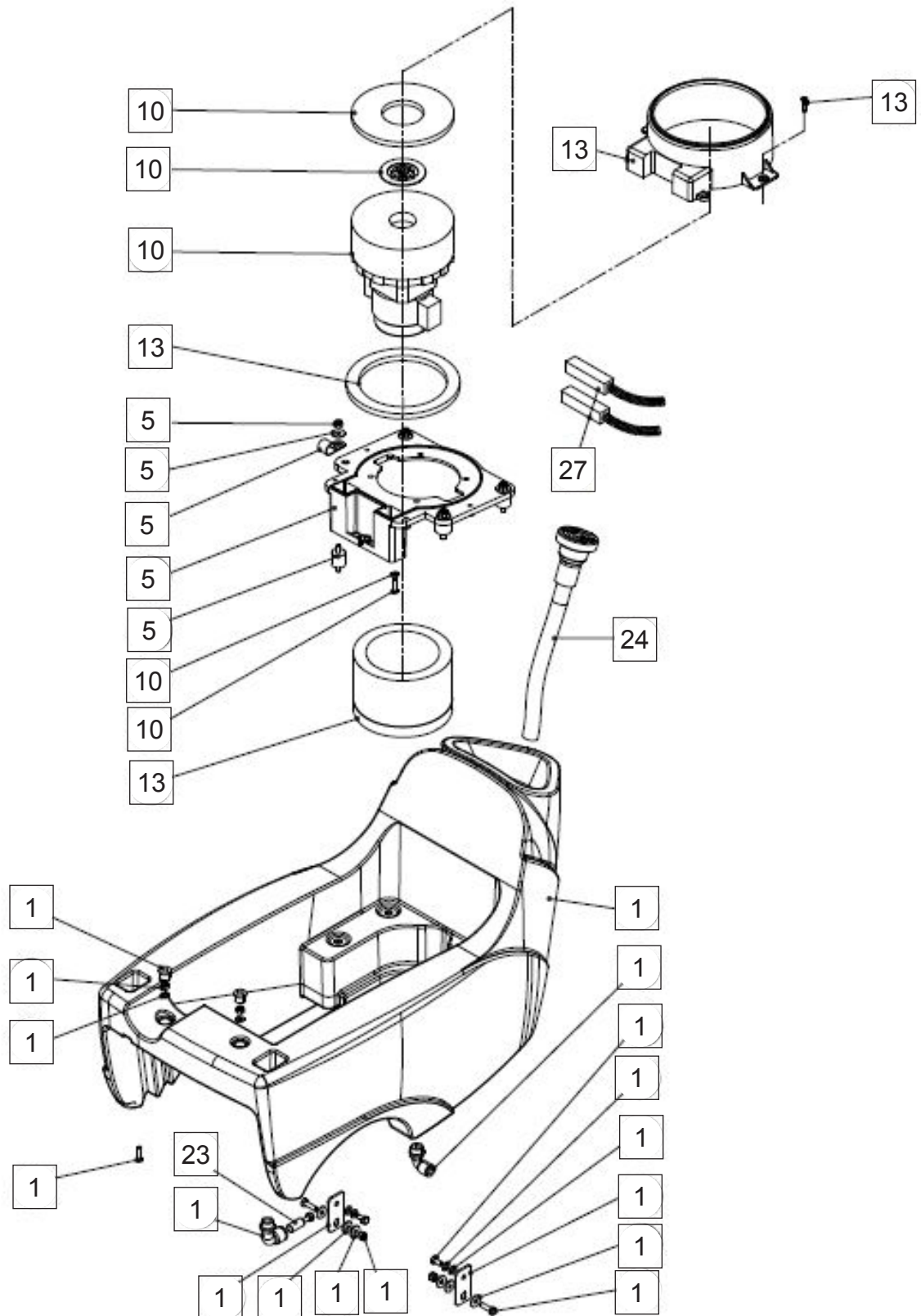
Automatic Scrubber Parts PAS14G

BRUSH HEAD



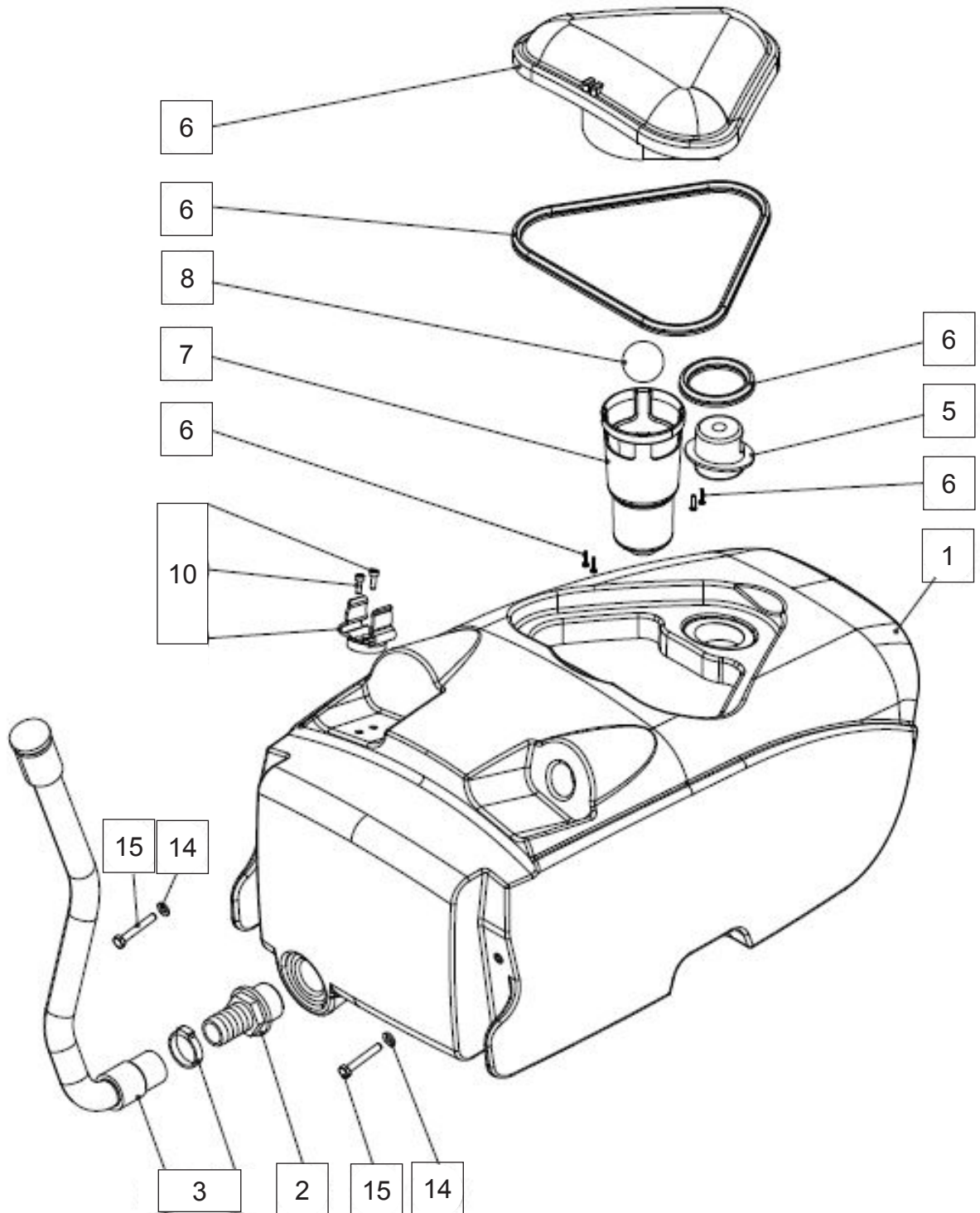
Automatic Scrubber Parts PAS14G

SOLUTION TANK



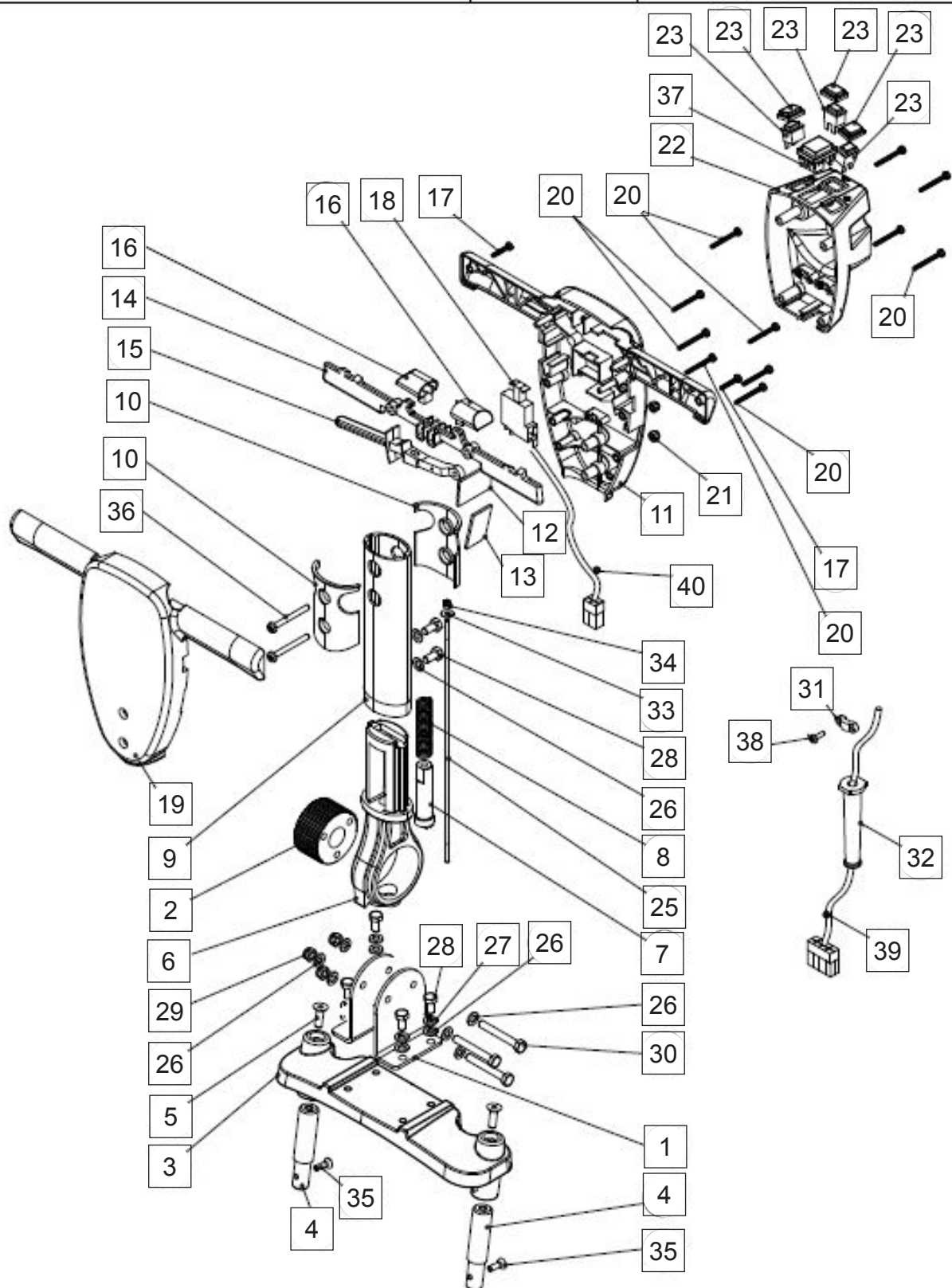
Automatic Scrubber Parts PAS14G

RECOVERY TANK



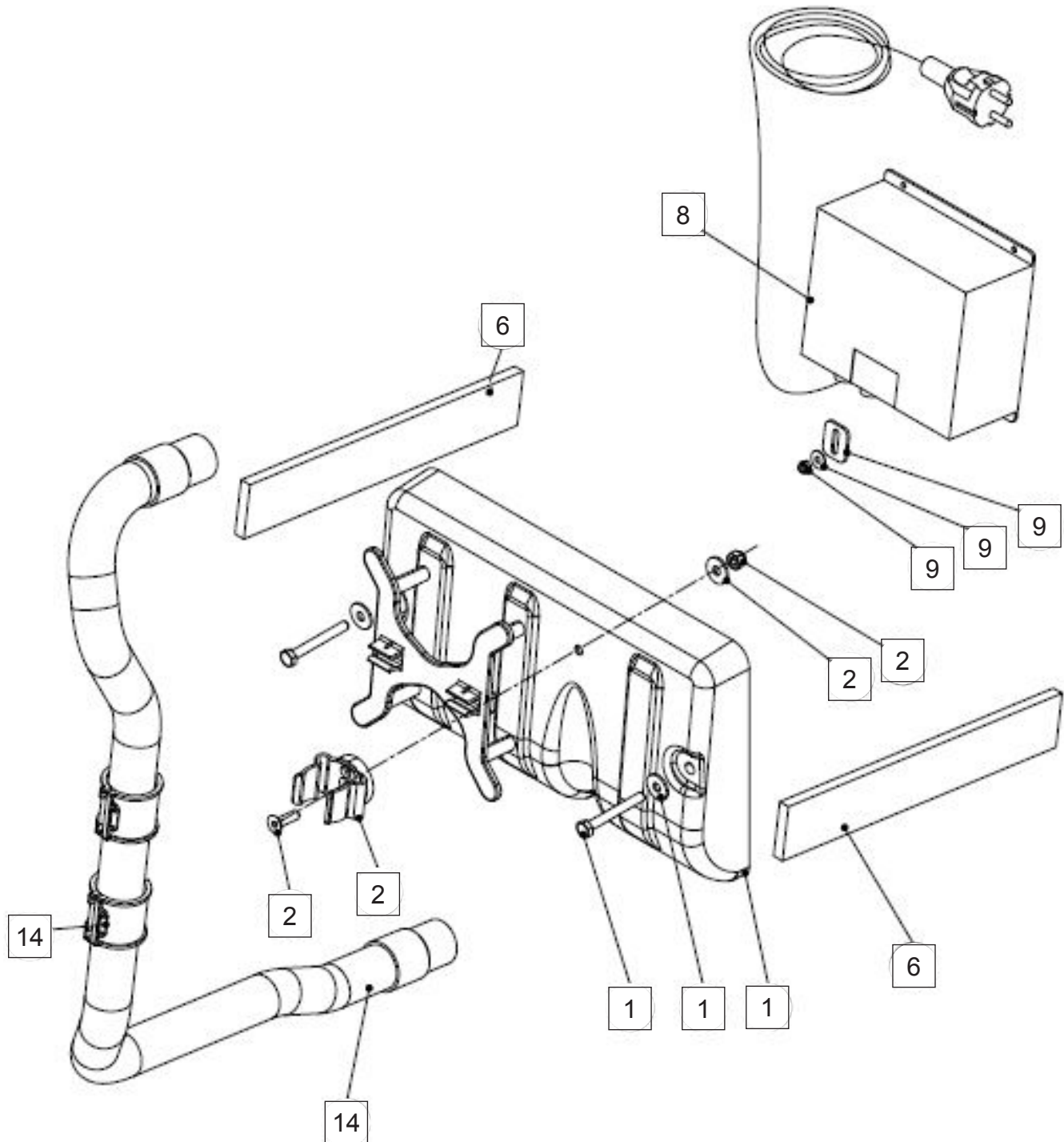
Automatic Scrubber Parts PAS14G

HANDLE



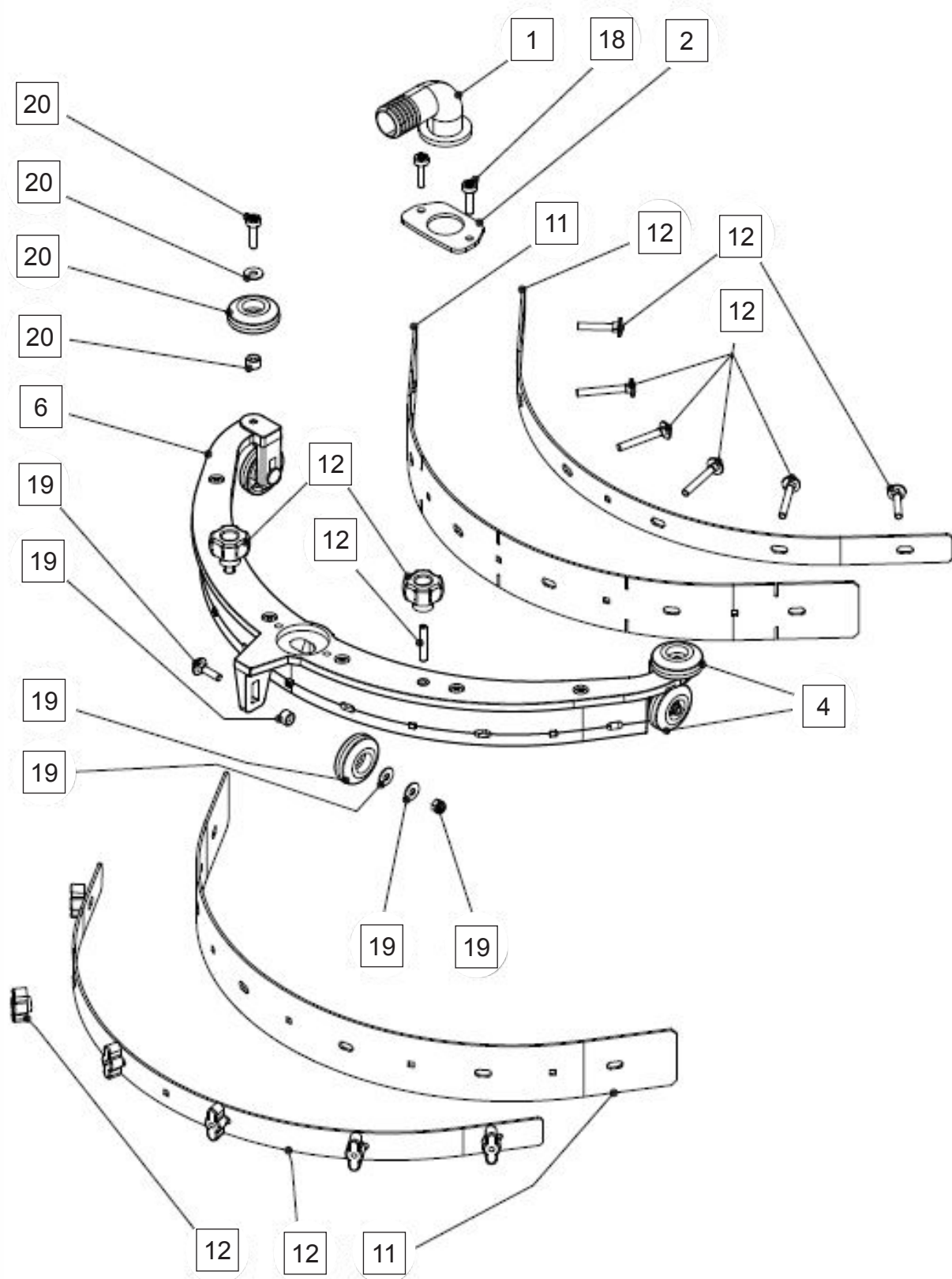
Automatic Scrubber Parts PAS14G

BATTERY CHARGER



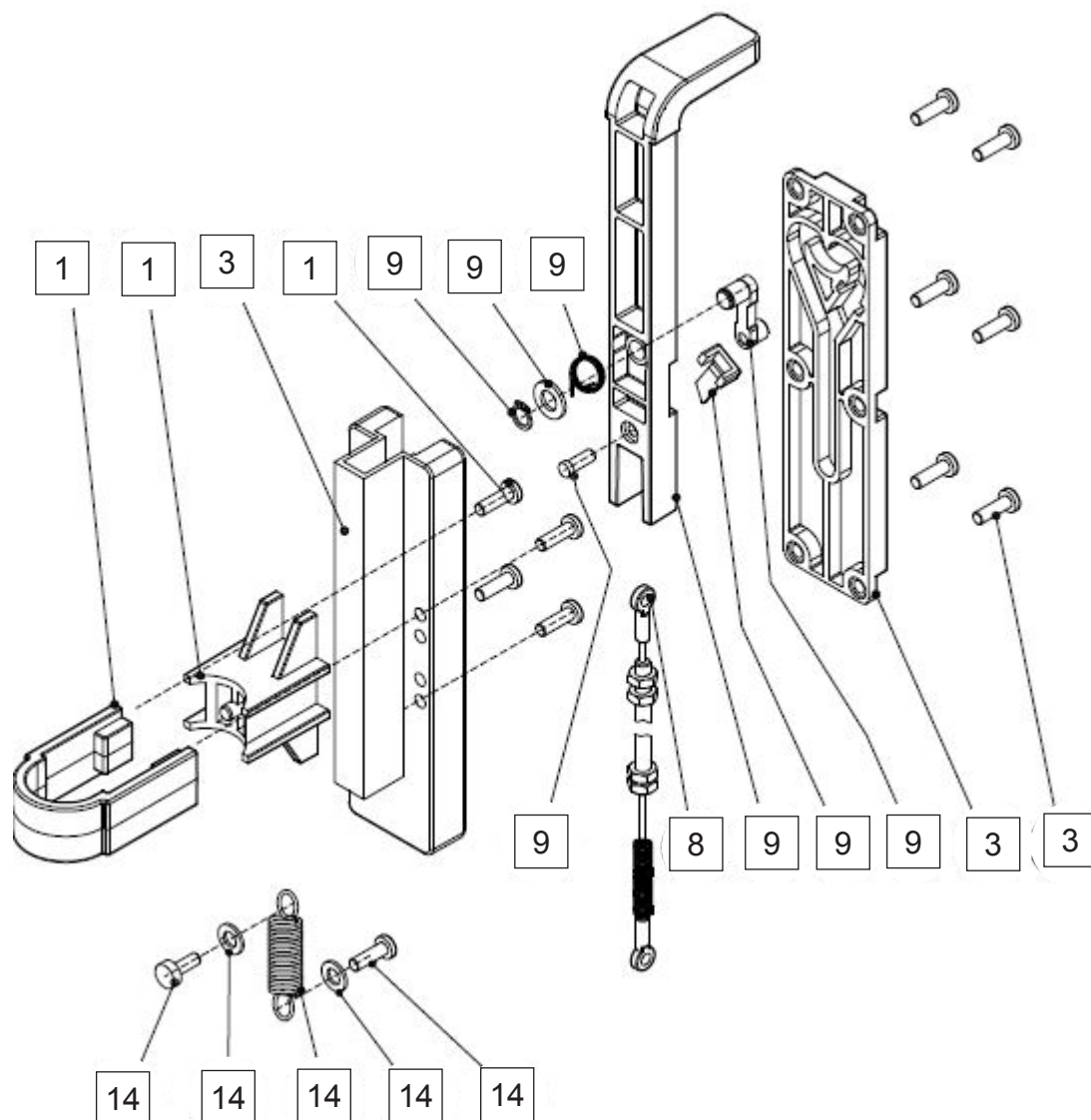
Automatic Scrubber Parts PAS14G

SQUEEGEE ASSEMBLY



Automatic Scrubber Parts PAS14G

SQUEEGEE LIFTING SYSTEM



Automatic Scrubber Parts PAS14G

PARTS LIST

Frame Assembly

No.	Part No.	Qty	Description
2	95.0026.00	2	Wheel Assembly
5	95.0002.00	1	Electronic Board Assembly
12	95.0030.00	1	Filter Assembly
13	95.0031.00	1	Solenoid Valve Kit (Includes 18)
16		1	Square Connector
17		1	Connection (Included w/Hose Connection Kit)
18	95.0067.00	1	Cap
19	95.0061.00	1	Hose Kit
22	95.0027.00	1	Brush Cover Mounting Kit
25	95.0028.00	1	Electronic Board Cover Kit
30	34.0031.00	1	Fuse 30A

Brush Head

No.	Part No.	Qty	Description
1	95.0036.00	1	Brush Cover Assembly
2	95.0033.00	1	Fulcrum Arm Assembly
3	95.0032.00	1	Brush Motor Kit
10	95.0035.00	1	Bumper Assembly
17	95.0034.00	1	Squeegee Support Assembly
20	P/O 95.0029.00		Hose Connector kit
26	P/O 95.0029.00		Hose Connector kit

Solution Tank

No.	Part No.	Qty	Description
1	95.0037.00	1	Solution Tank
5	95.0040.00	1	Vacuum Motor Mounting Plate
10	95.0038.00	1	Vacuum Motor Kit
13	95.0039.00	1	Sound Proofing Kit
23	95.0026.00	1	Cap (5 pack)
24	30.0024.00	1	Filling Hose
27	34.0318.00	1	Carbon Brushes

Recovery Tank

No.	Part No.	Qty	Description
27	24.0171.00	1	Recovery Tank
2	30.0096.00	1	Connection
29	95.0043.00	1	Drain Hose and Clamp
5	24.0162.00	1	Protection Cap
6	22.0194.00	1	Inspection Cap
31	95.0045.00	1	Float and Float Cage
32	24.0138.00	1	Float
9	23.0054.00	4	Screw M2.2 x 13
10	30.0099.00	1	Clamp
11	39.0091.00	1	Gasket
12	39.0092.00	1	Gasket
13	23.0120.00	2	Screw M4 x 14
14	00-0600-0503	2	Washer
15	23.0123.00	2	Screw M6 x 40

Handle

No.	Part No.	Qty	Description
1	Included w/Frame	1	Handle Support
2	CAS35	1	Handle Adjusting Gear
3	Included w/Frame	1	Support Plate
4	Included w/Frame	2	Pin
5	Included w/Frame	2	Screw M8 x 25
6	CAS110	1	Handle Knuckle
7	CAS36	1	Handle Adjusting Gear Dog
8	CAS22	1	Gear Dog Spring
9	03-8228-0000	1	Short Handle Tube
10	CAS25	2	Rubber Handle Boot
11	03-6087-0067	1	Back Handle Housing
12	03-7917-0067	1	Solution Trigger Backing Plate
13	03-66963-0067	1	Handle Socket Backing Plate
14	03-6090-0067	2	Left and Right Trigger
15	03-6089-0067	1	Gear Lever
16	03-6092-0067	2	Interlock
17	CAS24	2	Self Tapping Screw
18	CAS40	1	Switch
19	03-6086-0067	1	Front Handle Half
20	CAS23	11	Self Tapping Screw
21	23.0044.00	2	Nut
22	24.0168.00	1	Switch Housing
23	95.0018.00	1	Push Button Kit
25	33.0128.00	1	Adjusting Rod
26		12	Washer
27	Included w/Frame	4	Washer
28	23.0047.00	6	Screw M8 x 16
29	Included W/Frame	3	Nut

No.	Part No.	Qty	Description
30	Included w/Frame	3	Screw M8 x 60
31	12-109	1	Cable Clamp
32	12-118	1	Strain Relief
33	23.0043.00	1	Washer
34	23.0041.00	1	Nut
35	Included w/Frame	2	Screw M6 x 20
36			Screw M6 x 55
37	34.0240.00	1	Battery Level Indicator
38	13-922	2	Screw M4.5 x 13
39	34.0237.00	1	Handle Cable
40	34.0226.00	1	Brush Switch Cable

Battery Charger

No.	Part No.	Qty	Description
1	95.0046.00	1	Rear Cover Assembly
2	95.0047.00	1	Hose Clamp Kit
6		2	Battery Shim
8	18.0033.00	1	Battery Charger (US Plug)
9	95.0063.00	1	Charger Fixing Plate
14	95.0070.00	1	Squeegee Hose Kit

Squeegee Assembly

No.	Part No.	Qty	Description
1	30.0098.00	1	Elbow Connection
2		1	Plate
4	50.0024.00	5	Wheel
6	22.0133.00	1	Squeegee Body
11	95.0048.00	1	Squeegee Blade Set (PARA)
11	95.0050.00	1	Squeegee Blade Set (Oil Resistant)
	95.0049.00	1	Squeegee Blade Set (PARA)(5 PAIR)
	95.0051.00	1	Squeegee Blade Set (Oil Resistant)(5 PAIR)
12	95.0053.00	1	Squeegee Blade Retainer Kit
18	2508571	4	Screw
19	95.0054.00	3	Squeegee Wheel Kit
20	95.0052.00	2	Bumper Wheel Assembly
	22.0134.01	AR	Complete Squeegee Assembly (PARA)
	22.0134.00	AR	Complete Squeegee Assembly (Oil Resistant)

Squeegee Lifting System

No.	Part No.	Qty	Description
1	95.0058.00	1	Clamp and Support Kit
3	95.0059.00	1	Lever Enclosure Kit
8	95.0055.00	1	Cable
9	95.0057.00	1	Lever Kit
14	95.0056.00	1	Spring Kit (Includes 9 and 14)

WARRANTY

The manufacturer warrants to the original purchaser that products manufactured are free from defects, provided such goods are installed, operated and maintained in accordance with written manuals or other instructions for a period of 1 year from date of purchase on workmanship, motor, and parts. In case you, as our customer, meet any trouble with your machine, contact a Powr-Flite representative, who will be happy to be of service to you and will take care of any warranty issues. This warranty covers normal use and does not cover damage which occurs in shipment or failure resulting from altercation, accident, misuse, abuse, neglect or improper maintenance.

Powr-Flite[®]

A Tacony Company

3101 Wichita Court • Fort. Worth, TX 76140-1755
800-880-2913 • Fax: 817-551-0719 • www.Powr-Flite.com