

Powr-Flite®

PARTS LIST

Powr²Orbital Floor Machine ORB1420

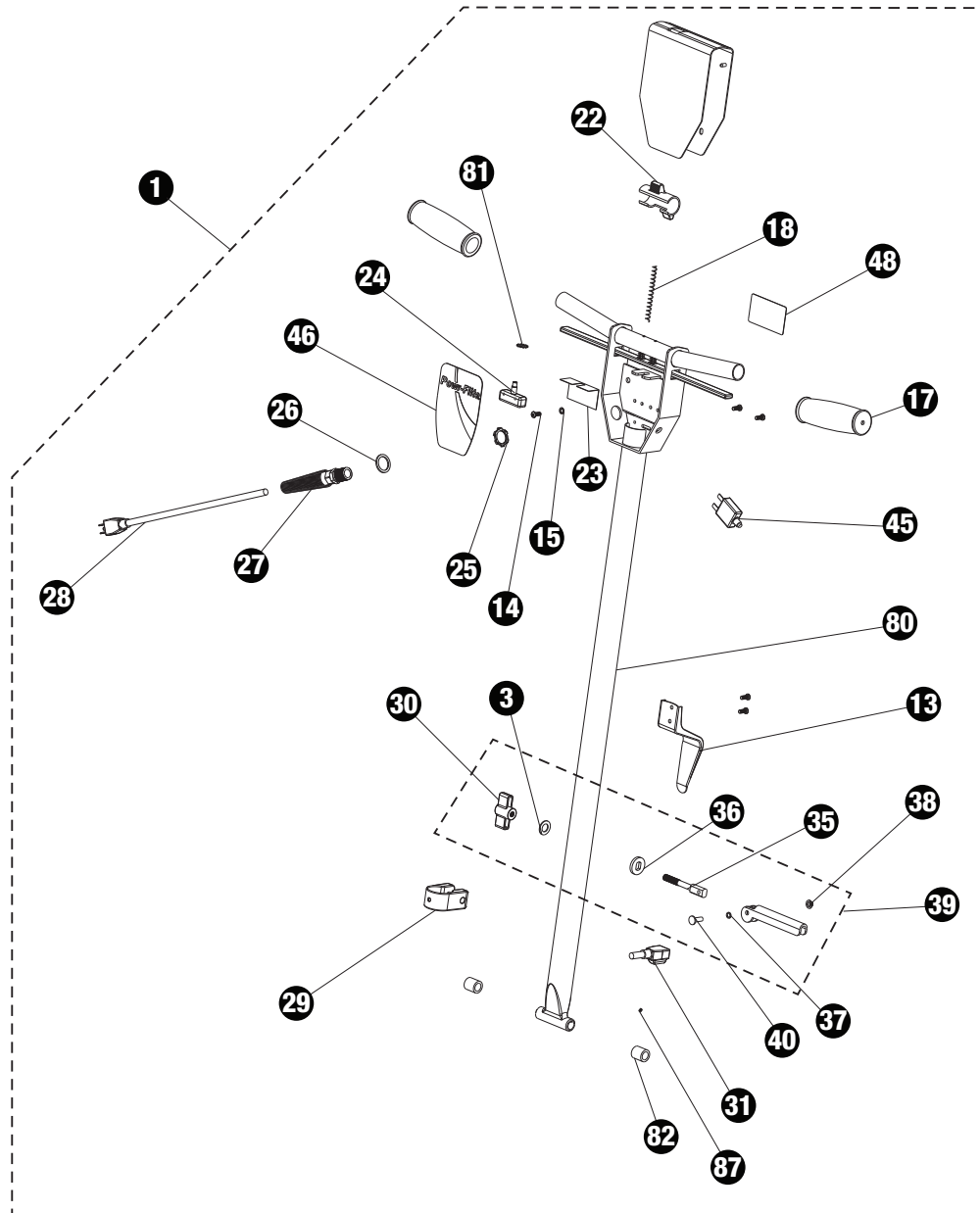


**WARNING: OPERATOR MUST READ AND UNDERSTAND THIS MANUAL
COMPLETELY BEFORE OPERATING THIS EQUIPMENT.**

Save These Instructions

SCHEMATICS - PARTS LISTS

ORB1420 HANDLE ASSEMBLY

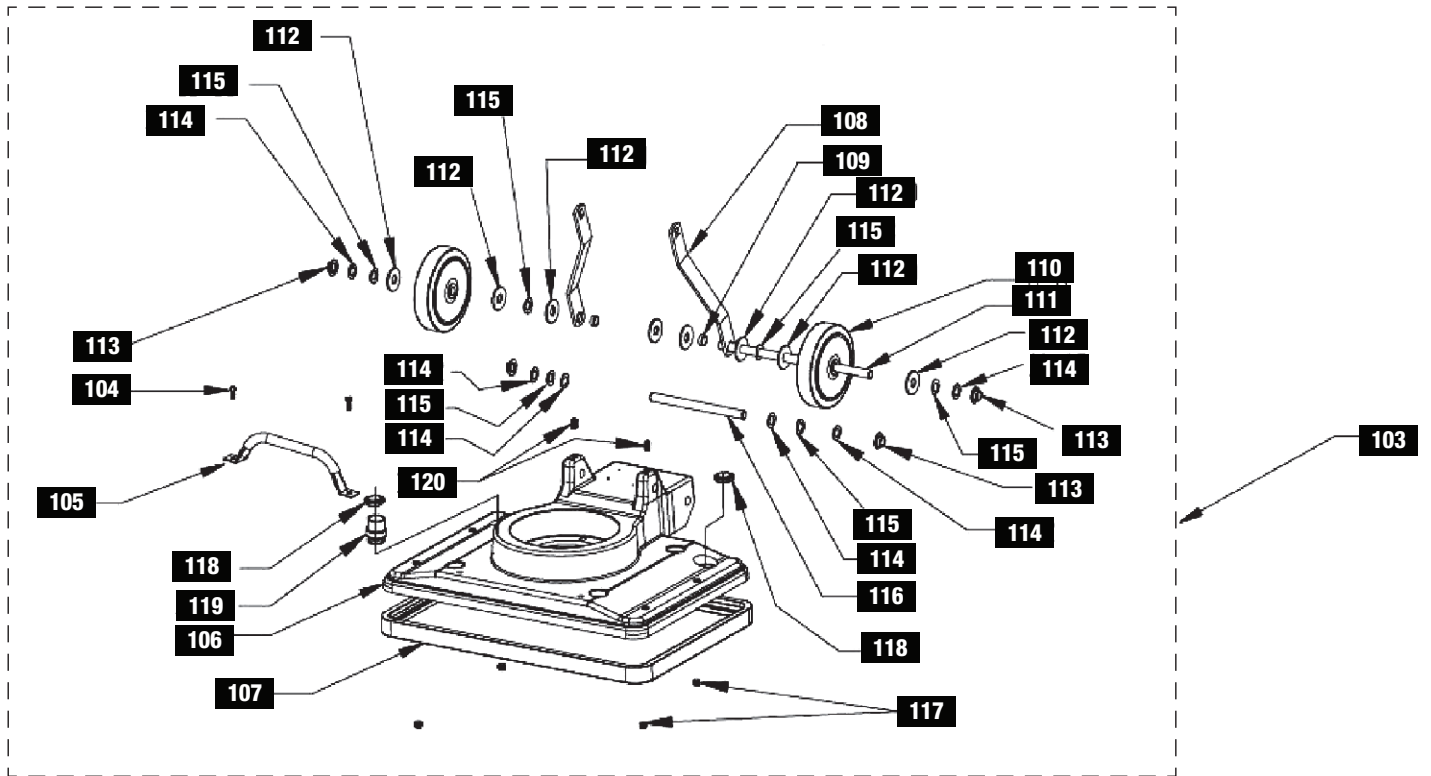
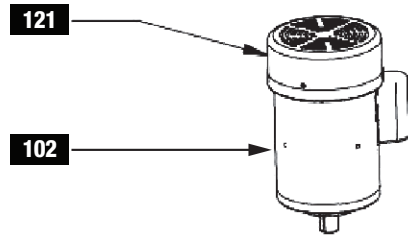


SCHEMATICS - PARTS LISTS

No.	Part No.	Qty	Description
1	X8911-K	1	Complete Handle Assembly
3	X8218	1	Washer
13	X8013	1	Cord Hook
14	X8207	5	Screw 10-24 x 1/2"
15	7CY001	3	Lock Washer Int Tooth
17	X8941	2	1" Handle Grip
18	X8915	1	Thumb Switch Actuator Spring
22	X8914	1	Thumb Switch Actuator
23	X1040	1	Insulation Sheet
24	X1039	1	Momentary Switch 25A w/Nuts
25	X8008N	1	Lock Nut 1/2" Steel Conduit
26	SR36	1	Strain Relief Washer
27	SR42	1	Strain Relief
28	M1369G	1	Power Cord 14/3 50'
29	X1456	1	Handle Clamp
30	X8016	1	Plastic Handle Lock Knob
31	X8989	1	Cord 14/3 SJTW 50"
35	X1184	1	Cam Lever Handle
36	X8028	1	Oval Cam Washer w/Slot
37	X8101A	2	Wave Washer
38	X8032	1	Nut
39	X8021A	1	Handle Clamp Assembly
40	X8031	1	Dowel Pin
45	X8023A	1	Circuit Breaker 17A w/Nuts
46	X8815A	1	Handle Label
48	X1044	1	Warning Label
80	X8911	1	Handle
81	X1084	1	Lock Washer Ext Tooth
82	X1080	2	Handle Spacer
87	X8222	1	Set Screw 14-20 x 3/16" w/Loc-Tite
Not Shown	PD3B	1	Rubber Foot
Not Shown	X8256	1	Nut
Not Shown	7DP002	1	Screw 8-32 x 5/8"

SCHEMATICS - PARTS LISTS

ORB1420 MOTOR and CHASSIS ASSEMBLY

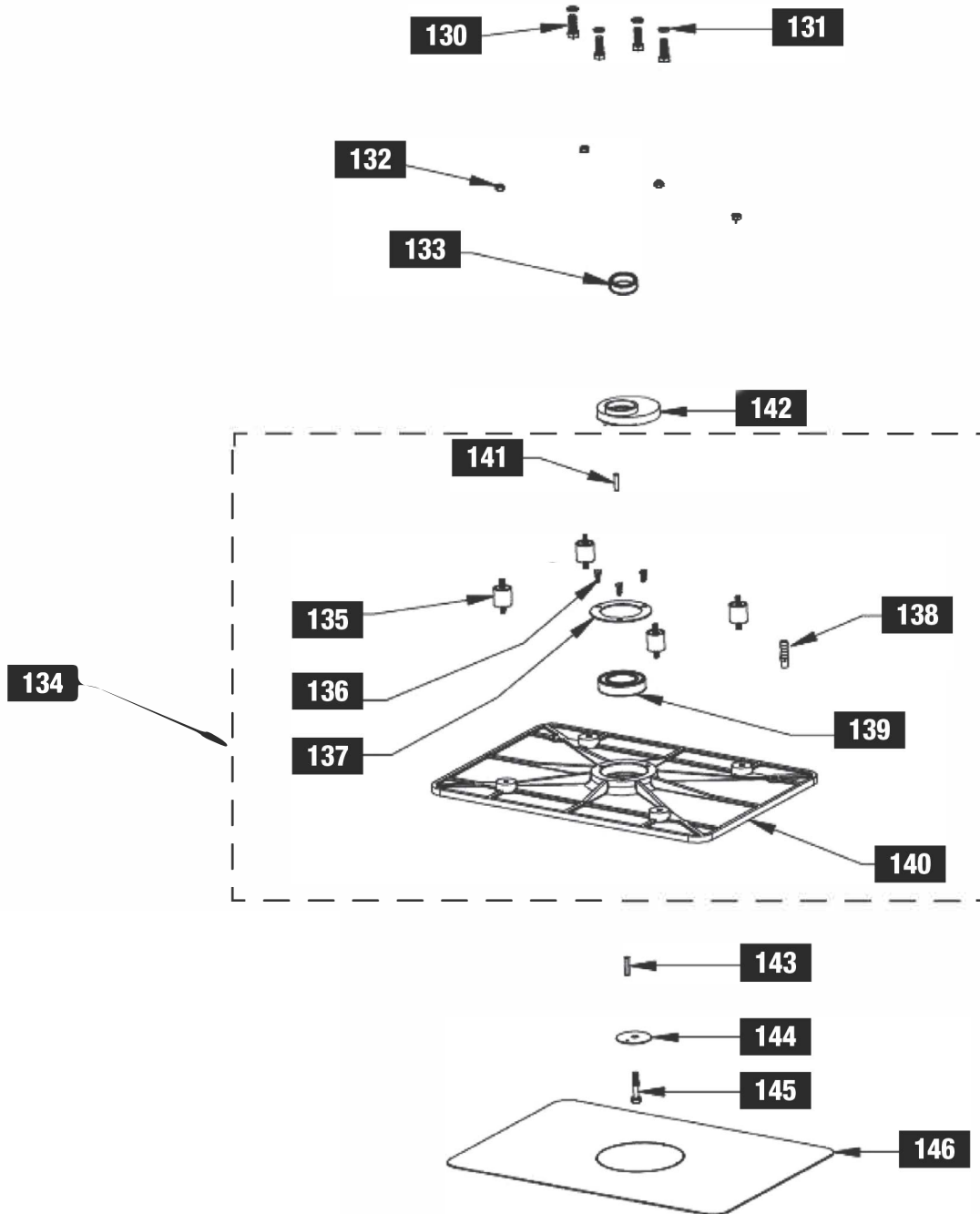


SCHEMATICS - PARTS LISTS

No.	Part No.	Qty	Description
102	X1091	1	Motor Assembly
103	X1092	1	Chassis Assembly
104	X1093	2	Bolt 5/16" x 1"
105	X1094	1	Chassis Handle
106	X1095	1	Chassis
107	X1096	1	Bumper
108	X1097	2	Brace
109	X1098	2	Brace Bushing
110	X1398	2	Wheel
111	X1430	1	Wheel Shaft
112	X1432	8	Washer
113	X1435	4	Cap Nut
114	X1103	6	Washer
115	X1104	6	Spring Washer
116	X1105	1	Shaft
117	X1106	4	Allen Set Screw 5/16" x 1-1/2"
118	X1107	2	Cap
119	X1108	1	Dust Control Coupling
120	X1109	2	Allen Set 1/4 X 1/2
121	X1128	1	Motor Cover

SCHEMATICS - PARTS LISTS

ORB1420 PAD ASSEMBLY



SCHEMATICS - PARTS LISTS

No.	Part No.	Qty	Description
130	X1110	4	Bolt 3/8" x 1"
131	X1111	4	Washer
132	X1112	4	Nylon Nut
133	X1113	1	Motor Spacer
134	X1114	1	Pad Driver Assembly
135	X1115	1	Shock Absorber Kit (Set of 4)
136	X1116	3	Bolt 1/4-20 x 1/2"
137	X1117	1	Bearing Retainer
138	X1118	1	Barbed Hose 1/8" NPT
139	X1119	1	Bearing 6008 LU
140	X1120	1	Pad Driver
141	X1121	1	Spirol Pin
142	X1122	1	Orbital Weight (Pre-2013)
142	X1501	1	Orbital Weight (From 2013)
143	X1123	1	Square Key
144	X1124	1	Pad Driver Washer
145	X1125	1	Bolt 5/16" x 1-1/2"
146	X1126	1	Facing Grip