

Powr-Flite[®]

PARTS LIST

Ultra High Speed Burnishers

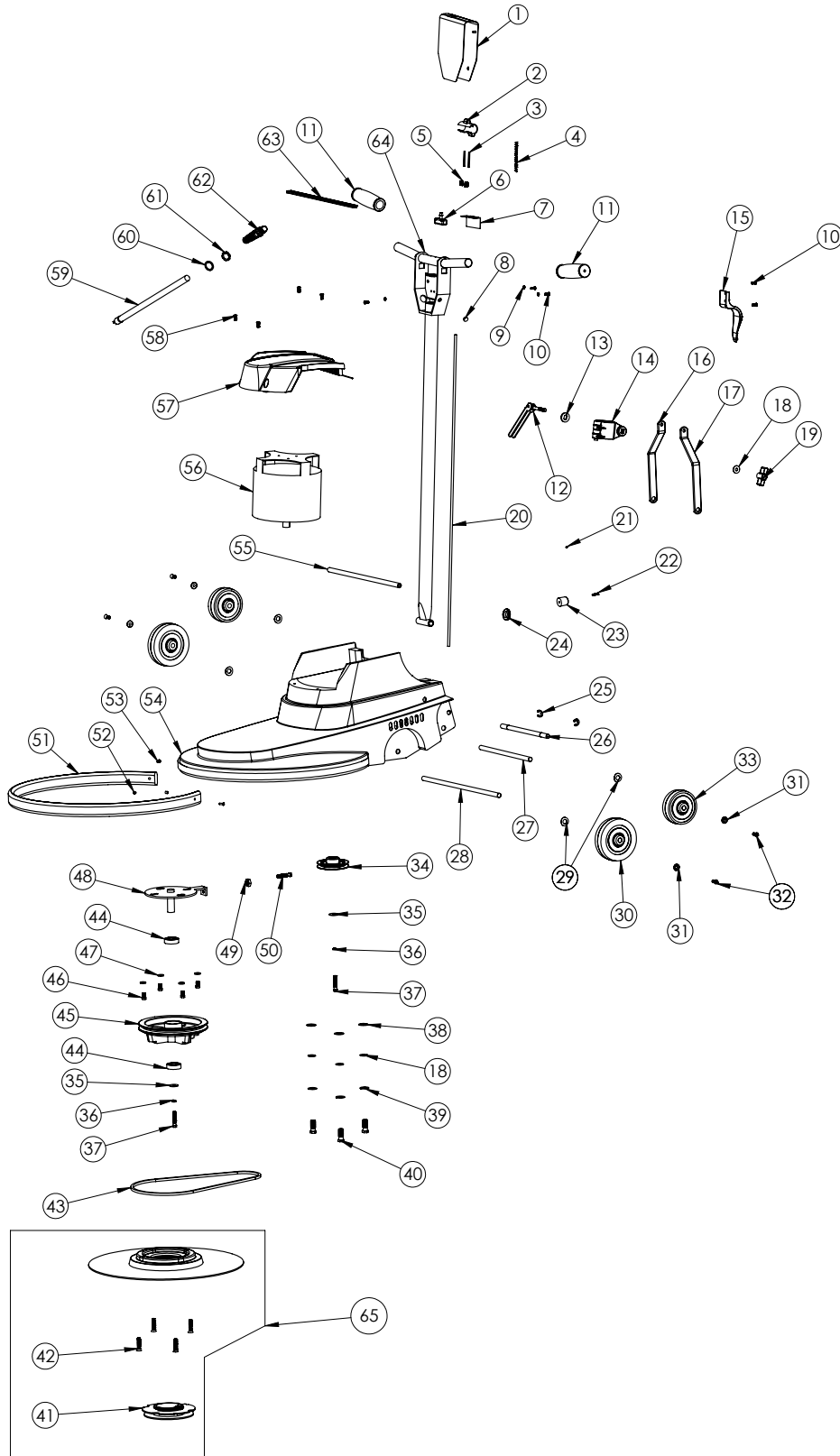


Model NM2000 2000 RPM

WARNING: OPERATOR MUST READ AND UNDERSTAND THIS MANUAL COMPLETELY BEFORE OPERATING THIS EQUIPMENT.

SCHEMATICS - PARTS LISTS

Model NM2000



No.	Part No.	QTY.	Description
1	X8912	1	Switch Box Cover
2	X8914	1	Thumb Switch Actuator
3	X8918	1	Roll Pin
4	X8915	1	Thumb Switch Actuator Spring
5	X8916	2	Trigger Spring
6	X1039	1	Momentary Switch 25A
7	X8923	1	Insulation Sheet
8	X8151B	1	Plastic Plug
9	7CY001	3	Washer, #10 Int Tooth Lock
10	X8207	5	Screw, 10-24 x 1/2"
11	X8941	2	Handle Grip
12	X1184	1	Cam Lever Handle
13	X8028	1	Cam Washer With Slot
14	X1456	2	Handle Clamp
15	X8013	1	Cord Hook
16	X8027R	1	Handle Brace Bracket Right
17	X8027L	1	Handle Brace Bracket Left
18	X8218	4	Washer
19	X8016	1	Handle Lock Knob
20	X8022	1	Inline Cord 49 Inches 14/3
21	X8222	1	Set Screw 1/4-20 x 3/16"
22	X8258AS	1	Screw #8 x 1"
23	X8258A	1	Bumper
24	7BG004	1	Grommet
25	3470	2	E-Ring
26	X8813	1	Brace Pivot Shaft
27	X8811	1	Handle Pivot Shaft
28	X8816	1	Axle 1/2" x 14-1/2"
29	X8101	4	Spring Washer
30	X8024	2	Wheel 5" x 1-1/4"
31	X8020	4	Countersunk Washer
32	X8265	4	Screw 1/4-20 x 3/4"
33	X8935	2	Wheel 4" x 1-1/2"
34	X9298	1	Pulley
35	X9374	2	Washer
36	X8217	2	Lock Washer
37	X9327	2	Screw 5/16" x 3/4"
38	X8219	3	Washer
39	X8212	3	Lock Washer
40	X8226	3	Screw 1/4-20 x 1-1/4"

No.	Part No.	QTY.	Description
41	F44P	1	Pad Retainer Assembly
42	X8216	4	Screw 5/16-18 x 1 1/2"
43	X8099-5	1	Belt 40.5"
44	X8098	2	Rubber Ball Bearing
45	X8096	1	Main Pulley
46	X8223	4	Screw 3/8-16 x 3/4"
47	X8230	4	Washer
48	X8091	1	Shaft And Plate Weldment
49	X8231	1	Nut
50	X8215	1	Screw 5/16-18 x 3/4"
51	X8030J	1	Bumper
52	X8822	2	Plastic Spacer
53	X8821	2	Bolt 8-32 x 3/4"
54	X8050AP	1	Housing
55	X8936	1	Axle 13 3/4"
56	X8037-TI	1	Motor 115V
57	X1457	1	Motor Cover
58	X8272	4	Screw 8-32 x 1/2"
59	M1407G	1	Cord 12/3 SJTW 75'
60	SR36	1	Strain Relief Washer
61	X8008N	1	Lock Nut, 1/2 Steel Conduit
62	SR37	1	Strain Relief
63	X8917	1	Trigger Handle
64	X8911	1	All Metal Handle
65	X8862	1	Flexible Pad Driver Assembly
NOT SHOWN	X8096A	1	Complete Main Pulley Assembly
NOT SHOWN	X1662	1	Complete Handle Clamp Assembly

For warranty information go to www.Powr-Flite.com

Powr-Flite[®]

A Tacony Company

3101 Wichita Court • Fort Worth, TX 76140-1755

1-800-880-2913 • Fax: 1-817-551-0719