

Powr-Flite[®]

PARTS LIST

Ultra High Speed Burnishers



**1600 RPM
Model NM1600**

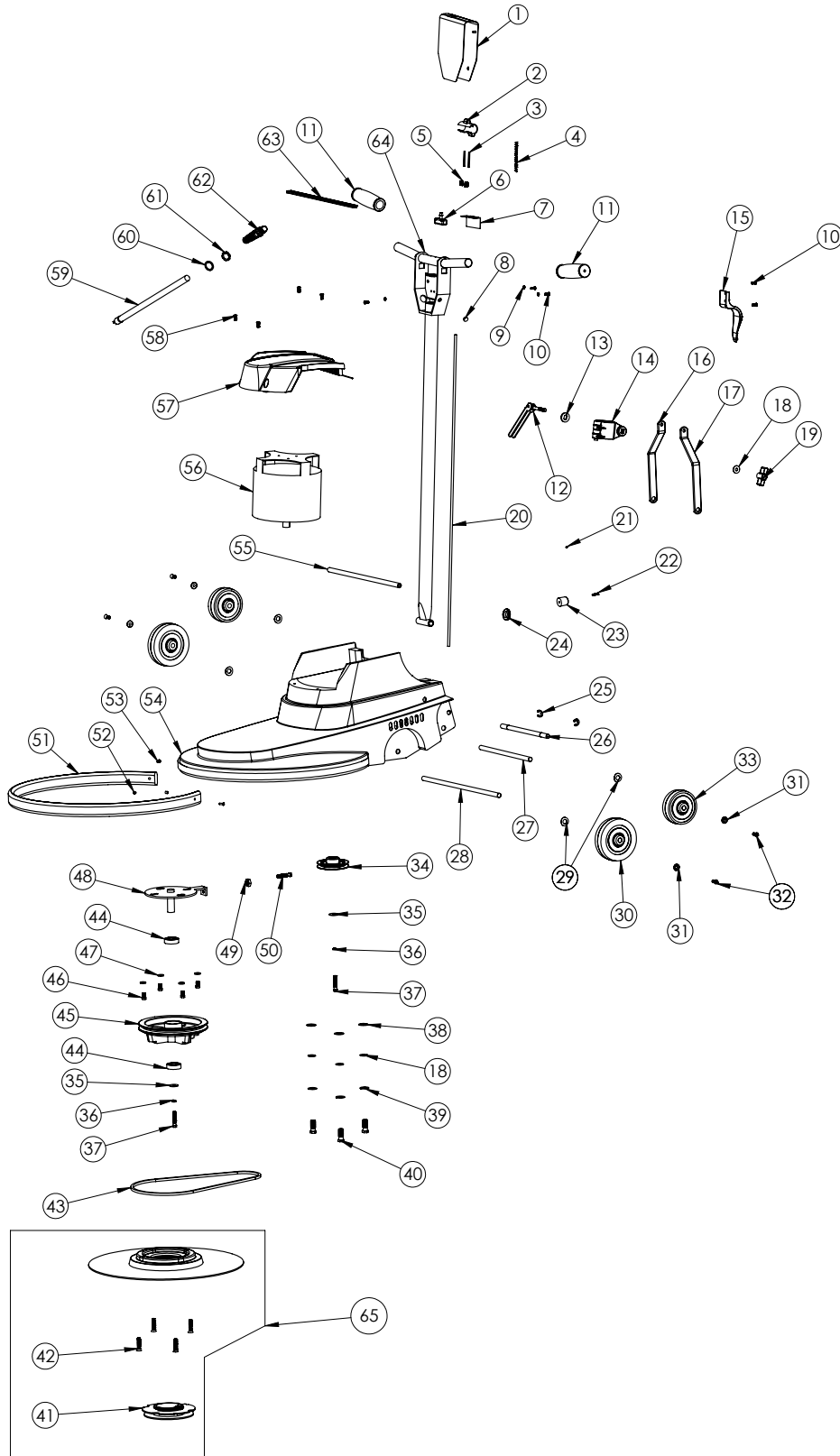
**2000 RPM
Model NM2000**

**2000 RPM
Model NM2000DC**

**WARNING: OPERATOR MUST READ AND UNDERSTAND THIS MANUAL
COMPLETELY BEFORE OPERATING THIS EQUIPMENT.**

SCHEMATICS - PARTS LISTS

Models NM1600, NM2000

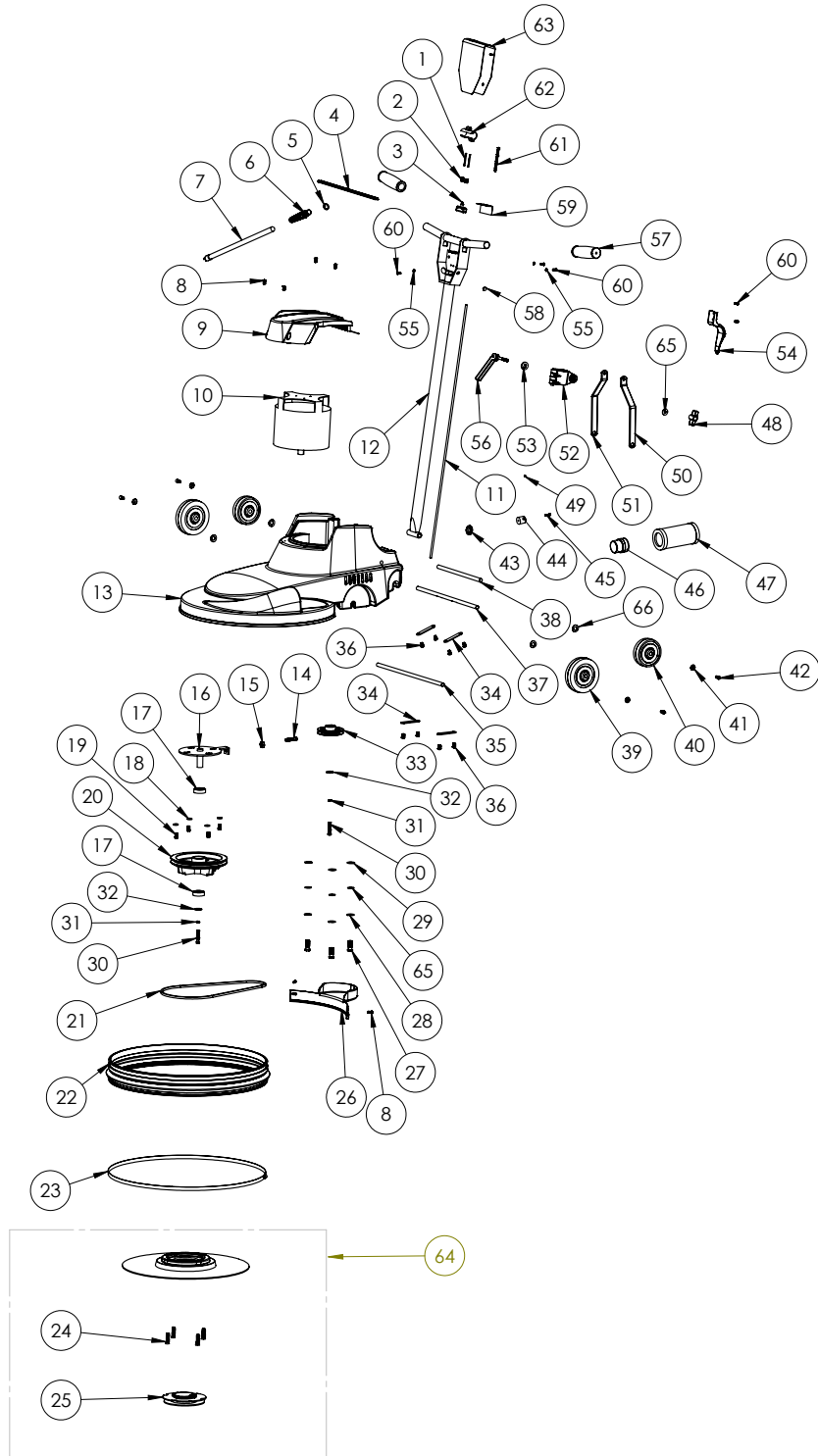


| No. | Part No. | QTY. | Description |
|-----|----------|------|------------------------------|
| 1 | X8912 | 1 | Switch Box Cover |
| 2 | X8914 | 1 | Thumb Switch Actuator |
| 3 | X8918 | 1 | Roll Pin |
| 4 | X8915 | 1 | Thumb Switch Actuator Spring |
| 5 | X8916 | 2 | Trigger Spring |
| 6 | X1039 | 1 | Momentary Switch 25A |
| 7 | X8923 | 1 | Insulation Sheet |
| 8 | X8151B | 1 | Plastic Plug |
| 9 | 7CY001 | 3 | Washer, #10 Int Tooth Lock |
| 10 | X8207 | 5 | Screw, 10-24 x 1/2" |
| 11 | X8941 | 2 | Handle Grip |
| 12 | X1184 | 1 | Cam Lever Handle |
| 13 | X8028 | 1 | Cam Washer With Slot |
| 14 | X1456 | 2 | Handle Clamp |
| 15 | X8013 | 1 | Cord Hook |
| 16 | X8027R | 1 | Handle Brace Bracket Right |
| 17 | X8027L | 1 | Handle Brace Bracket Left |
| 18 | X8218 | 4 | Washer |
| 19 | X8016 | 1 | Handle Lock Knob |
| 20 | X8022 | 1 | Inline Cord 49" 14/3 |
| 21 | X8222 | 1 | Set Screw 1/4-20 x 3/16" |
| 22 | X8258AS | 1 | Screw #8 x 1" |
| 23 | X8258A | 1 | Bumper |
| 24 | 7BG004 | 1 | Grommet |
| 25 | 3470 | 2 | E-Ring |
| 26 | X8813 | 1 | Brace Pivot Shaft |
| 27 | X8811 | 1 | Handle Pivot Shaft |
| 28 | X8816 | 1 | Axle 1/2" x 14-1/2" |
| 29 | X8101 | 4 | Spring Washer |
| 30 | X8024 | 2 | Wheel 5" x 1-1/4" |
| 31 | X8020 | 4 | Countersunk Washer |
| 32 | X8265 | 4 | Screw 1/4-20 x 3/4" |
| 33 | X8935 | 2 | Wheel 4" x 1-1/2" |
| 34 | X9298 | 1 | Pulley (NM2000) |
| | X8889 | 1 | Pulley (NM1600) |
| 35 | X9374 | 2 | Washer |
| 36 | X8217 | 2 | Lock Washer |
| 37 | X9327 | 2 | Screw 5/16" x 3/4" |
| 38 | X8219 | 3 | Washer |
| 39 | X8212 | 3 | Lock Washer |
| 40 | X8226 | 3 | Screw 1/4-20 x 1-1/4" |

| No. | Part No. | QTY. | Description |
|-----------|----------|------|--------------------------------|
| 41 | F44P | 1 | Pad Retainer Assembly |
| 42 | X8216 | 4 | Screw 5/16-18 x 1 1/2" |
| 43 | X8099-5 | 1 | Belt 40.5" |
| 44 | X8098 | 2 | Rubber Ball Bearing |
| 45 | X8096 | 1 | Main Pulley |
| 46 | X8223 | 4 | Screw 3/8-16 x 3/4" |
| 47 | X8230 | 4 | Washer |
| 48 | X8091 | 1 | Shaft And Plate Weldment |
| 49 | X8231 | 1 | Nut |
| 50 | X8215 | 1 | Screw 5/16-18 x 3/4" (NM2000) |
| | 03361 | 1 | Screw 5/16-18 x 1" (NM1600) |
| 51 | X8030J | 1 | Bumper |
| 52 | X8822 | 2 | Plastic Spacer |
| 53 | X8821 | 2 | Bolt 8-32 x 3/4" |
| 54 | X8050AP | 1 | Housing |
| 55 | X8936 | 1 | Axle 13 3/4" |
| 56 | X8037-TI | 1 | Motor 115V |
| 57 | X1457 | 1 | Motor Cover |
| 58 | X8272 | 4 | Screw 8-32 x 1/2" |
| 59 | M1407G | 1 | Cord 12/3 SJTW 75' |
| 60 | SR36 | 1 | Strain Relief Washer |
| 61 | X8008N | 1 | Lock Nut, 1/2 Steel Conduit |
| 62 | SR37 | 1 | Strain Relief |
| 63 | X8917 | 1 | Trigger Handle |
| 64 | X8911 | 1 | All Metal Handle |
| 65 | X8862 | 1 | Flexible Pad Driver Assembly |
| NOT SHOWN | X8096A | 1 | Complete Main Pulley Assembly |
| NOT SHOWN | X1662 | 1 | Complete Handle Clamp Assembly |

SCHEMATICS - PARTS LISTS

Models NM2000DC



SCHEMATICS - PARTS LISTS

| No. | Part No. | Qty | Description |
|-----|----------|-----|-------------------------------|
| 1 | X8918 | 2 | Roll Pin |
| 2 | X8916 | 2 | Trigger Spring |
| 3 | X1039 | 1 | Momentary Switch 25A w/ Nuts |
| 4 | X8917 | 1 | Handle Trigger |
| 5 | X8008N | 1 | 1/2" Steel Conduit Lock Nut |
| 6 | SR37 | 1 | Strain Relief |
| 7 | M1407G | 1 | Power Cord 12/3 SJTW 75' Gray |
| 8 | X8272 | 6 | Screw 8-32 x 1/2 |
| 9 | X1457 | 1 | Motor Cover |
| 10 | X8037-TI | 1 | Motor 120V |
| 11 | X8022 | 1 | Inline Cord SJTWA 14/3 50" |
| 12 | X8911 | 1 | Handle |
| 13 | X1455 | 1 | Housing, 20" Dust Control |
| 14 | X8215 | 1 | Bolt 5/16-18 x 3/4" |
| 15 | X8231 | 1 | Nut |
| 16 | X8091 | 1 | Shaft and Plate Weldment |
| 17 | X8098 | 2 | Bearing |
| 18 | X8230 | 4 | Washer |
| 19 | X8223 | 4 | Screw 3/8-16 x 3/4" |
| 20 | X8096 | 1 | Main Pulley |
| 21 | X8099-5 | 1 | Belt 40.5" V Style |
| 22 | X1461 | 1 | Dust Control Skirt |
| 23 | X1469 | 1 | Dust Skirt Clamp |
| 24 | X8216 | 4 | Screw 5/16-18 x 1-1/2 " |
| 25 | F44P | 1 | Pad Retainer |
| 26 | X1454 | 1 | Pulley Cover, Dust Control |
| 27 | X8226 | 3 | Bolt 1/4-20 x 1-1/4" |
| 28 | X8212 | 3 | Lock Washer |
| 29 | X8219 | 3 | Washer |
| 30 | X9327 | 2 | Screw 5/16 x 3/4" |
| 31 | X8217 | 2 | Lock Washer |
| 32 | X9374 | 2 | Washer |
| 33 | X9298 | 1 | 2000 Pulley |
| 34 | X9444 | 4 | Front Strap |
| 35 | X8816 | 1 | Axle 1/2" x 14-1/2" |
| 36 | 7BS003 | 8 | Screw 1/4-20 x 1/2" |
| 37 | X1460 | 1 | Axle 1/2" X 15.25" |
| 38 | X8811 | 1 | Pivot Shaft, 1/2" x 10-1/2" |
| 39 | X8024 | 2 | Black Wheel 5" x 1-1/4" |
| 40 | X8935 | 2 | Wheel, 4" x 1-1/2" |

| No. | Part No. | Qty | Description |
|-----|----------|-----|---|
| 41 | X8020 | 4 | Countersunk Washer |
| 42 | X8265 | 4 | Screw 1/4-20 x 3/4" |
| 43 | 7BG004 | 1 | Grommet |
| 44 | X8258A | 1 | Black Bumper |
| 45 | X8258AS | 1 | Screw #8 x 1" |
| 46 | X1465 | 1 | Filter Mount Tube |
| 47 | 19069 | 1 | Filter |
| 48 | X8016 | 1 | Plastic Knob |
| 49 | X8222 | 1 | Set Screw 14-20 x 3/16" w/Loc-Tite |
| 50 | X8027L | 1 | Handle Brace Bracket Left |
| 51 | X8027R | 1 | Handle Brace Bracket Right |
| 52 | X1456 | 1 | Tube Clamp Assembly |
| 53 | X8028 | 1 | Oval Cam Washer w/Slot |
| 54 | X8013 | 1 | Plated Cord Hook |
| 55 | 7CY001 | 3 | Lock Washer, #10 Int Tooth |
| 56 | X1184 | 1 | Cam lever assembly (includes X8016 and washers) |
| 57 | X8941 | 2 | 1" Handle Grip |
| 58 | X8151B | 1 | Plastic Plug |
| 59 | X8923 | 1 | Insulation Sheet |
| 60 | X8207 | 5 | Screw 10-24 x 1/2" |
| 61 | X8915 | 1 | Thumb Switch Actuator Spring |
| 62 | X8914 | 1 | Thumb Switch Acuator |
| 63 | X8912 | 1 | Switch Box Cover |
| 64 | X8862 | 1 | Flexible Pad Driver |
| 65 | X8218 | 4 | Washer |
| 66 | X8101 | 4 | Spring Washer |

For warranty information go to www.Powr-Flite.com

Powr-Flite[®]

A Tacony Company

3101 Wichita Court • Fort Worth, TX 76140-1755

1-800-880-2913 • Fax: 1-817-551-0719