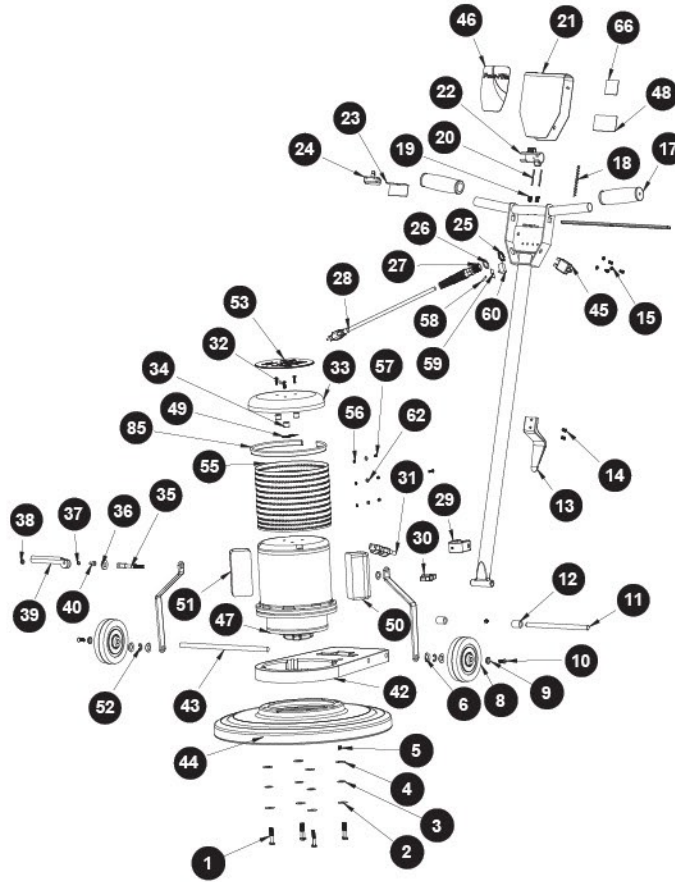


# Floor Machines Models C171, C171SD, C201, C202, C171HD, C172, C201HD PARTS



ref #	item #	description
1	72455A	bolt 1/4-20 x 1- 3/4 hex cap
1	X8234	bolt 5/16-18 x 1 1/2 hex for 2 speed only
2	X8219	washer 3/8 sae flat zinc
3	X8218	washer 5/16 sae flat zinc
4	X8212	washer 1/4 med split lock zinc
5	X8995	screw socket set 10-24 x 1/4
6	X8101	washer spring 1"od x 1/2" id x 0.012
7	X8807L	handle brace, left
8	X8024	wheel black 5" x 1- 1/4"
9	X8020	washer, countersunk, axle
10	X8265	screw 1/4-20 x 3/4 flat phil
11	X8977	pivot pin metal floor machine
12	X8107	spacer, handle floor machine
13	X8013	cord hook, plated
14	X8207	screw 10-24 x 1/2 phil pan
15	7CY001	washer #10 int tooth, lock
17	X8941	handle grip 1" diameter
18	X8915	spring thumb actuator
19	X8916	spring trigger metal mandle
20	X8918	roll pin metal handle
21	X8912	switch box cover handle
22	X8914	thumb switch actuator
23	X1040	insulation sheet 2.5 x 2 x .015
23	X8923	insulation sheet 2.5 x 2 x .015
24	X1039	switch 25a 1.5hp
24	F5P	switch push button
25	X8008N	nut, lock, 1/2" steel conduit
26	SR36	strain relief washer
27	SR42	strain relief metal large
28	M1369G	14/3 50' stwa gray cord
29	X8012	clamp, collar, handle
30	X8016	knob, plastic, handle clamp
31	X8989	cord 14-3 sjtw 50" black cord
31	X1053	cord 14-3 sjtw 56" black cord for 2 speed only
32	X8266	screw 10-32 x 1" phil flat
33	X8965	motor cover
34	X8106	spacer mtr cover mtl

ref #	item #	description
35	X8015	stud, adjustable, cam/handle
36	X8028	washer, cam w/ slot
37	X8101A	wave spring washer 6mm
38	X8032	nut, 1/4, push steel plated
39	X8014	cam lever handle, only sell x8012a
40	X8031	dowel pin, w/head 1/4" x 3/4"
41	X8807R	handle brace, right
42	X8966	motor base metal
43	X9575	axle, wheel 0.5" diameter
44	X8967A	17" brush housing and bumper
44	X8968A	20" brush housing and bumper
45	X8023	15 amp circuit breaker
45	X8023A	17 amp circuit breaker
46	X8815A	label, m handle, foil, pf logo
47	33080	motor 1 hp
47	X8071P	motor 2 speed
47	X8980	motor 1.5hp 60hz chrome
48	X8418A	label warning
49	X8413	label "disconnect power cord"
50	X8954	run capacitor
51	X8953	start capacitor
52	3470	ring-retaining ext. "e" 1/2"
53	X8984	label 17" 1 1/2 hp 175 rpm
53	X8982	label 17" 1 hp 175 rpm
53	X8985	label 20" 1 1/2 hp 175 rpm
53	X9101	label 20" 1 1/2 hp 175 rpm
53	X8983	label 20" 1 hp 175 rpm
55	X9049B	motor screen for 2 speed only
56	00-0300-0503	m3 flat washer for 2 speed only
57	X9846	rivet, mesh cover 2 speed only
58	PX28	toggle switch boot rubber for 2 speed only
59	X8495	high/low label for 2 speed only
60	PX7	toggle switch 20a/125v for 2 speed only
62	1575	#6 sae flat washer zinc
66	X1003	made in the usa label
85	X1041	gasket, epdm u-shape 25"

\*call for pricing and availability of all referenced parts