

Powr-Flite[®]

HIGH SPEED BURNISHER C1600-3 PARTS LIST

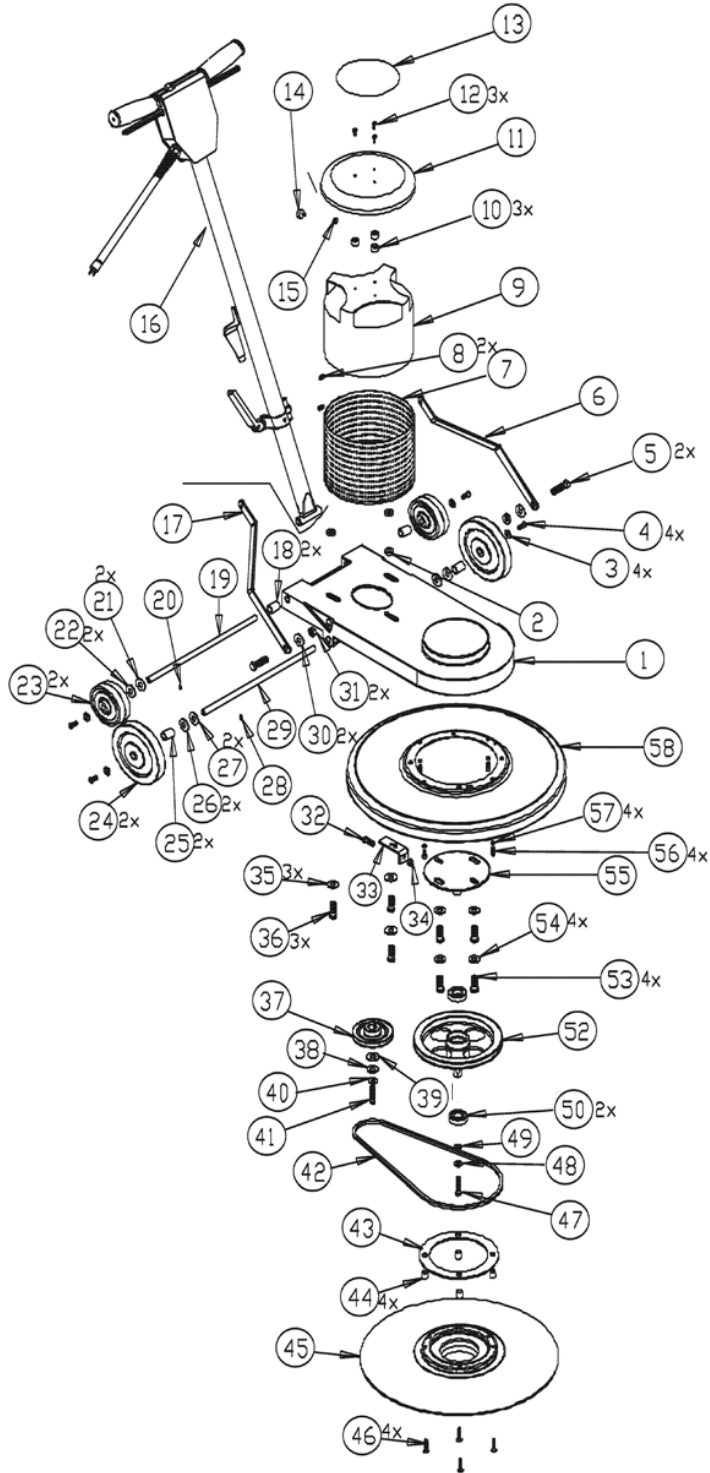


**WARNING: OPERATOR MUST READ AND UNDERSTAND THIS MANUAL
COMPLETELY BEFORE OPERATING THIS EQUIPMENT.**

Save These Instructions

SCHEMATICS - PARTS LISTS

C1600-3 MAIN ASSEMBLY



SCHEMATICS - PARTS LISTS

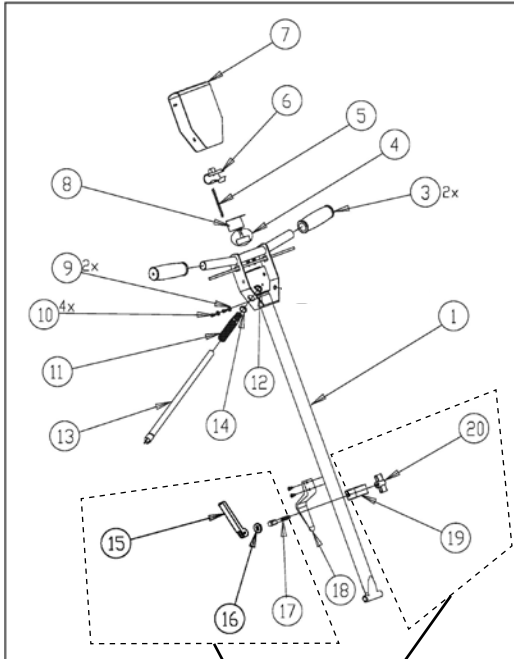
No.	Part No.	Qty	Description
1	X9271	1	Chassis
2	X8219	2	Washer
3	X8020	2	Countersunk Washer
4	X8265	4	Screw 1/4-20 x 3/4"
5	X8227	2	Bolt 5/16-18 x 1 1/4"
6	X9274	1	Left Handle Bracket
7	X9049	1	Motor Screen
8	X9050	2	Spring
9	X8037-1C	1	Motor w/ Plug
10	X8106	3	Spacer
11	X8965	1	Motor Cover
12	X8245	3	Screw 8-18 x 1"
13	X9273	1	Label
14	X9405	1	Handle Stop
15	X8256	1	Nut
16	X8911	1	Handle
17	X9275	1	Right Handle Bracket
18	X8107	1	Spacer
19	X8816	1	Axle 1/2" x 14-1/2"
20	X8205	1	Set Screw 10-32 x 3/8"
21	X8101	1	Spring Washer
22	X8224	1	Washer
23	X8935	2	Wheel, 4" x 1-1/2"
24	X9406	2	Wheel, 6" x 1-1/16"
25	X8107	4	Spacer
26	X8224	1	Washer
27	X8101	4	Spring Washer
28	X8205	1	Set Screw 10-32 x 3/8"
29	X9276	1	Axle
30	X8224	1	Washer
31	X8231	1	Nut
32	03361	1	Bolt 5/16-18 x 1"
33	X8948	1	Belt Tensioner
34	X8231	1	Nut
35	X8230	1	Washer
36	X8226	1	Bolt 1/4-20 x 1-1/4"
37	X8889	1	M1600 O-Groove Pulley
38	X8217	2	Lock Washer
39	X9374	2	Washer
40	X8212	3	Lock Washer

SCHEMATICS - PARTS LISTS

No.	Part No.	Qty	Description
41	X9327	2	Screw 5/16 x 3/4"
42	X8099-5	1	Belt 40.5" V Style
43	X9272	1	Ring Adapter
44	X9403	4	Spacer
45	X8862	1	Flexible Pad Driver
46	X9402	1	Screw 5/16-18 X 2"
47	X9327	1	Screw 5/16 x 3/4"
48	X8217	1	Lock Washer
49	X9374	2	Washer
50	X8098	2	Bearing
52	X8096	1	Main Pulley
53	X8223	4	Screw 3/8-16 x 3/4"
54	X8230	4	Washer
55	X8091	1	Shaft and Plate Weldment
56	X9404	1	Screw, SHCS, 1/4-20"
57	X9401	1	Brass Washer
58	X9299	1	Pad Cover
Not Shown	F44P	1	Pad Retainer

SCHEMATICS - PARTS LISTS

C1600-3 HANDLE ASSEMBLY



21

No.	Part No.	Qty	Description
1	X8911	1	Handle
3	X8941	1	1" Handle Grip
4	X1039	1	Momentary Switch 25A w/ Nuts
5	X8915	1	Thumb Switch Actuator Spring
6	X8914	1	Thumb Switch Actuator
7	X8912	1	Switch Box Cover
8	X8923	1	Insulation Sheet
9	7CY001	1	Lock Washer, #10 Int Tooth
10	X8207	1	Screw 10-24 x 1/2"
11	SR42	1	Strain Relief
12	X8008N	1	1/2" Steel Conduit Lock Nut
13	M1407G	1	Power Cord 12/3 75' SJTW Gray
14	SR36	1	Strain Relief Washer
15	X8014	1	Cam Lever
16	X8028	1	Oval Cam Washer w/ slot
17	X8015	1	Stud
18	X8013	1	Plated Cord Hook
19	X8012	1	Handle Clamp
20	X8016	1	Plastic Knob
21	X1662	1	Handle Clamp Assembly

For warranty information go to www.Powr-Flite.com

Powr-Flite[®]

A Tacony Company

3101 Wichita Court • Fort Worth, TX 76140-1755

1-800-880-2913 • Fax: 1-817-551-0719