

Powr-Flite®

OPERATOR'S MANUAL & PARTS LIST

WET/DRY VACUUM PF55HM



Wet recovery adapter for use
with the PF55HM HEPA vacuum.

#PFHMW-K

**WARNING: OPERATOR MUST READ AND UNDERSTAND THIS MANUAL
COMPLETELY BEFORE OPERATING THIS EQUIPMENT.**

Save These Instructions

SAVE THESE INSTRUCTIONS FOR FUTURE REFERENCE

*When using a wet/dry vacuum, basic precautions should be followed.

*Read all instructions before using your vacuum.

IMPORTANT SAFETY ADVICE

READ ALL INSTRUCTIONS BEFORE USING THIS APPLIANCE

When using an electrical appliance, basic precautions should always be followed.

⚠ WARNING

To reduce the risk of fire, electric shock or injury; only use vacuum as described in this manual.

Read all instructions carefully before use.

Keep children and unauthorized persons away from the machine when in use.

- DO NOT leave the machine plugged in when not in use.
- Switch the machine off before removing the plug from the outlet.
- When unplugging, pull the plug, not the cord.
- The machine must be unplugged prior to cleaning or servicing the machine.
- Keep the power cord clear of moving parts.
- DO NOT roll the machine over the power cord.
- DO NOT operate the machine with a damaged power cord or plug, or if the machine malfunctions or is damaged in any way.
- DO NOT use where hazardous dust is present.
- DO NOT use in an explosive atmosphere.
- DO NOT use where flammable liquids or gasses are present.
- DO NOT use or pick up flammable chemicals or liquids with this machine.
- Take care when using the machine near the top of stairs to avoid overbalancing.
- Wear suitable footwear to avoid slipping.
- DO NOT operate this machine in bare feet or with open-toed shoes or sandals.
- DO NOT smoke when using the machine.
- DO NOT pick up anything that is burning or smoking, such as cigarettes, matches, or hot ashes.
- DO NOT use without dust bag and/or filters in place.
- DO NOT pull or carry by cord, use cord as a handle, close door on cord, or pull cord around sharp edges or corners. Keep cord away from heated surfaces. Store cord properly when not in use.

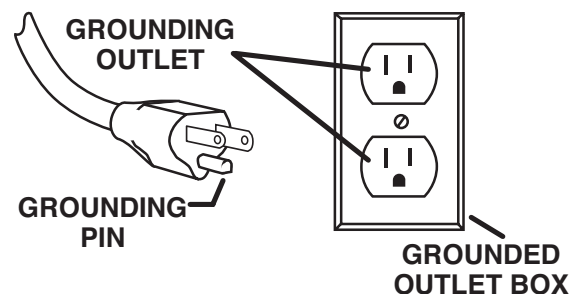
GROUNDING INSTRUCTIONS

This appliance must be grounded. If it should malfunction or break down, grounding provides a path of least resistance for electric current to reduce the risk of electric shock. This appliance is equipped with a cord having an equipment-grounding conductor and grounding plug. The plug must be plugged into an appropriate outlet that is properly installed and grounded in accordance with all local codes and ordinances.

This appliance is for use on a nominal 120 volt circuit and has a ground plug (see illustration, right). Make sure that the appliance is connected to an outlet having the same configuration as the plug. No adaptor should be used with this appliance.

⚠ WARNING

Improper connection of the equipment-grounding conductor can result in a risk of electric shock. Check with a qualified electrician or service person if you are in doubt as to whether the outlet is properly grounded. Do not modify the plug provided with the appliance – if it will not fit the outlet, have a proper outlet installed by a qualified electrician.



CRITICAL AREA VACUUM WARNINGS

This vacuum has been specifically designed to clean up hazardous dust and debris. Special filters reduce the risk of airborne dust that would be created by other methods of cleaning.

BE SURE TO READ AND FOLLOW ALL SAFETY INSTRUCTION!

THIS EQUIPMENT SHOULD BE OPERATED BY TRAINED PERSONS AND IN ACCORDANCE WITH ALL LOCAL REGULATIONS.

DO NOT sweep, scoop, shovel or in any manner handle hazardous dust and debris other than by vacuum.

DO NOT at any time attempt to remove, substitute, bypass or by any other means change the filters in the vacuum.

Special filters are required for use in this hazardous waste vacuum.

DO NOT use any other replacement filters, filter bags or parts than the original equipment manufacturers.

DO NOT use without complete knowledge and understanding of set up, cleaning, replacing filters and filter bags on this unit.

DO NOT use this vacuum without fully understanding the manufacturer's warnings, and proper use instructions.

WET USE PRECAUTIONS

This vacuum may be used for recovery of hazardous water or wet debris.

THE WET ADAPTER KIT MUST BE INSTALLED DURING WATER OR WET DEBRIS RECOVERY. FAILURE TO USE THE WET ADAPTER WILL CAUSE DAMAGE TO THE HEPA FILTER, VACUUM AND POTENTIALLY EXPOSE THE USER TO THE HAZARDOUS MATERIAL BEING RECOVERED.

DRY USE INSTRUCTIONS

1. Inspect vacuum to ensure that HEPA filter, HEPA pre-filter and paper bag are in place. We recommend placing a plastic trash bag in the bottom the unit to cover and remove paper bag to prevent escape of contaminated dust.
2. Dawn protective gear.
3. Vacuum DRY debris.
4. Dispose of full paper bag according to local regulations.

REPLACING PAPER BAG

1. Remove top head unit.
2. Unfasten bag retaining plate.
3. Slide full bag out of plate.
4. Slide new bag into retaining plate.
5. Fasten retaining plate.



The wet use adapter must be installed prior to using this vacuum for wet material recovery.

WET USE ADAPTER INSTRUCTIONS

This vacuum has been specifically designed to clean up hazardous dust and debris. Special filters reduce the risk of airborne dust that would be created by other methods of cleaning.

BE SURE TO READ AND FOLLOW ALL SAFETY INSTRUCTION!

THIS EQUIPMENT SHOULD BE OPERATED BY TRAINED PERSONS AND IN ACCORDANCE WITH ALL LOCAL REGULATIONS.

DO NOT sweep, scoop, shovel or in any manner handle hazardous dust and debris other than by vacuum.

DO NOT at any time attempt to remove, substitute, bypass or by any other means change the filters in the vacuum.

Special filters are required for use in this hazardous waste vacuum.

DO NOT use any other replacement filters, filter bags or parts than the original equipment manufacturers.

DO NOT use without complete knowledge and understanding of set up, cleaning, replacing filters and filter bags on this unit.

DO NOT use this vacuum without fully understanding the manufacturer's warnings, and proper use instructions.

DO NOT EXPOSE HEPA FILTER TO WATER

DO NOT ATTEMPT TO RECOVER ANY WET ITEMS WITHOUT FIRST INSTALLING THE WET ADAPTER

LEAVE HEPA PRE-FILTER IN PLACE DURING WET RECOVERY

INFORMATION

The PF55HM has been specifically designed to recover hazardous material. The PFHMW-K is the wet recovery adapter that must be used whenever wet materials are going to be recovered with the PF55HM.

DESCRIPTION

The PFHMW-K is designed to move the HEPA filter out of the recovery tank to prevent it from getting wet. This adapter is composed of two parts:

1. A stainless Steel Spacer (Fig. 1)
2. A float shut-off assembly (Fig. 2)

The stainless spacer moves the HEPA filter out of the recovery tank and the float shut off prevents water from entering the tank.

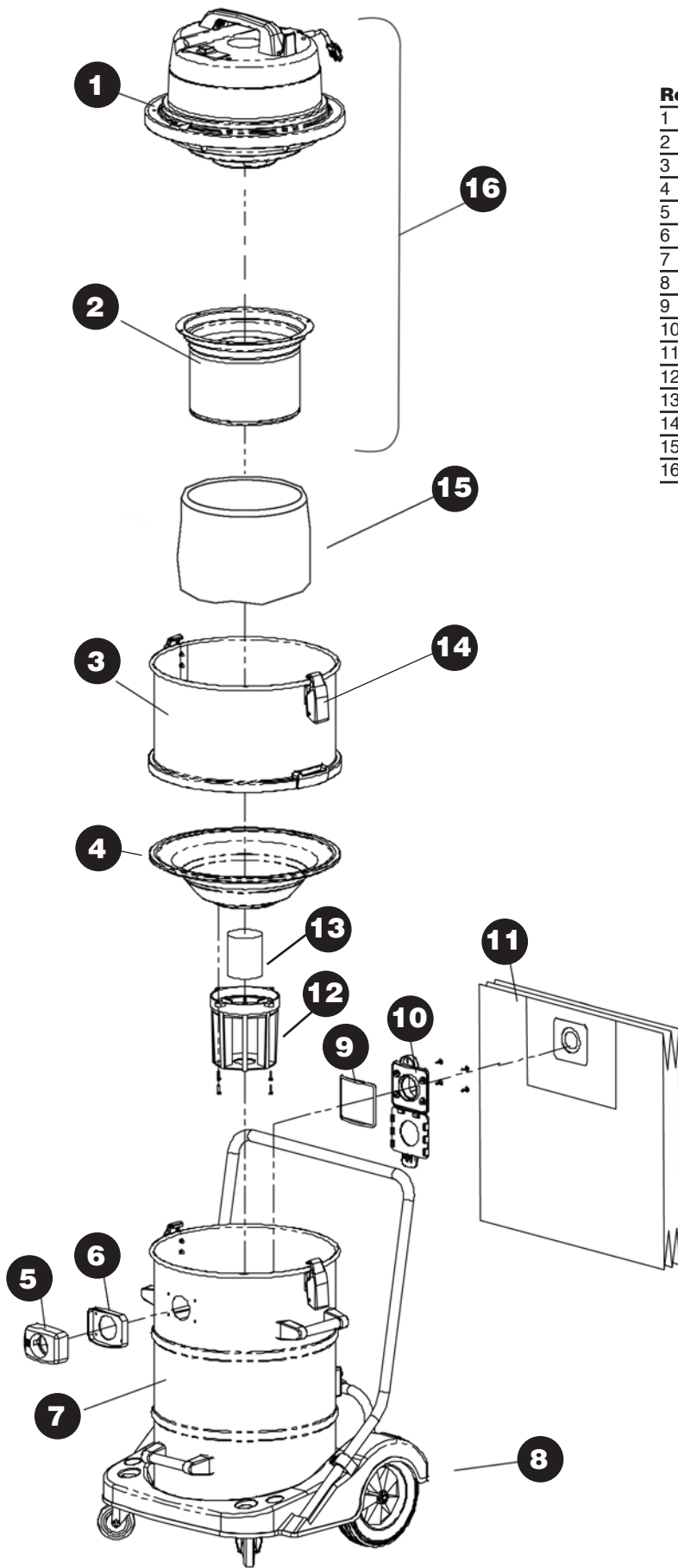


Fig. 1

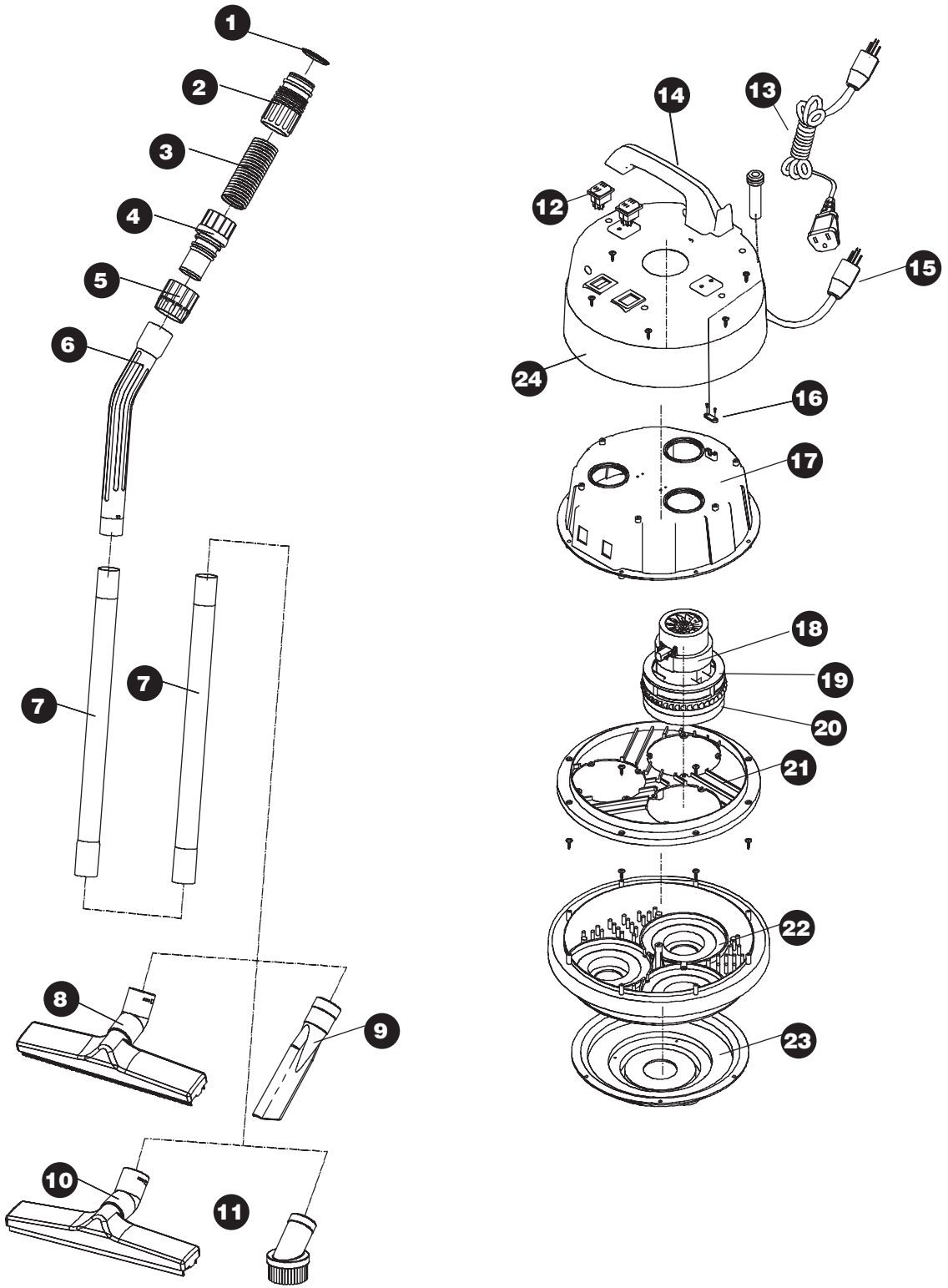


Fig. 2

PF55HM



Ref #	Item#	description
1	WD195	Top Head Assy
2	X9251	Certified HEPA Filter
3	WD197	Stainless Steel Adapter
4	WD198	Bottom dish for Adapter Assy
5	WD199	Suction Coupler for PF55HM
6	WD50	Gasket for Suction Coupler
7	WD38	Tank Assy
8	WD1	Cart Assy
9	WD200	Bag Adapter Gasket
10	WD203	Bag Adapter
11	PB55HM	Recovery Bag 6 pk.
12	WD8	Float Cage
13	WD9	Float
14	WD43	Clamp Assy
15	H829	Pre Filter
16	PF55HM-T	PF55HM Top Head Assy



MODEL PF55-PF57 PARTS

ref #	item #	description
		Tool and Top head assembly parts
1	WD23	Gasket
2	WD24	Connector
3	WD25	Hose Assembly
4	WD26	Connector
5	WD27	Holder
6	WD28	Bend connector
7	WD29	Extension wand
8	WD31	Floor brush
9	WD32	Crevice tool
10	WD30A	Squeegee tool
11	WD33	Round brush

12	WD22	Power switch
13	WD21	Power cord
14	WD20	Top handle
15	WD66C	Pigtail power cord
16	WD17	Cord plate
17	WD16	Middle Seat
18	WD15	Motor
19	WD54	Top motor Gasket
20	WD55	Bottom motor Gasket
21	WD14	Holder for motor seat
22	WD11	Motor seat
23	WD10	Base
24	WD19	Top cover

TROUBLE SHOOTING GUIDE

Loss of Suction

CAUSE:

- 1) Tank full.
- 2) Dry filter assembly clogged.
- 3) Clogged hose or wand.
- 4) Tank rim is dented.
- 5) Loose or broken fan.
- 6) Motor not working.
- 7) Float not functioning.
- 8) Seal worn.

SOLUTION:

- 1) Empty Tank
- 2) Clean cloth filter.
- 3) Remove obstruction.
- 4) Replace tank.
- 5) Contact manufacturer or service center.
- 6) Contact manufacturer or service center.
- 7) Check to see if float moves freely or tank is full.
- 8) Replace seal.

Motor is not running

CAUSE:

- 1) Broken switch.
- 2) Defective power cord.
- 3) Defective motor.

SOLUTION:

- 1) Contact manufacturer or service center.
- 2) Contact manufacturer or service center.
- 3) Contact manufacturer or service center.

The Limited Warranty

The manufacturer warrants to the original purchaser that products manufactured are free from defects, provided such goods are installed, operated and maintained in accordance with written manuals or other instructions for a period of 1 year from date of purchase on workmanship, motor, and parts. In case you, as our customer, meet any trouble with your machine, contact a representative, who will be happy to be of service to you and will take care of any warranty issues.

Powr-Flite[®]

A Tacony Company

3101 Wichita Court • Ft. Worth, TX 76140-1755
1-800-880-2913 • Fax: 1-817-551-0719 • www.Powr-Flite.com