

Powr-Flite®

PARTS LIST

Phantom Automatic Scrubber **Model: PFS32**

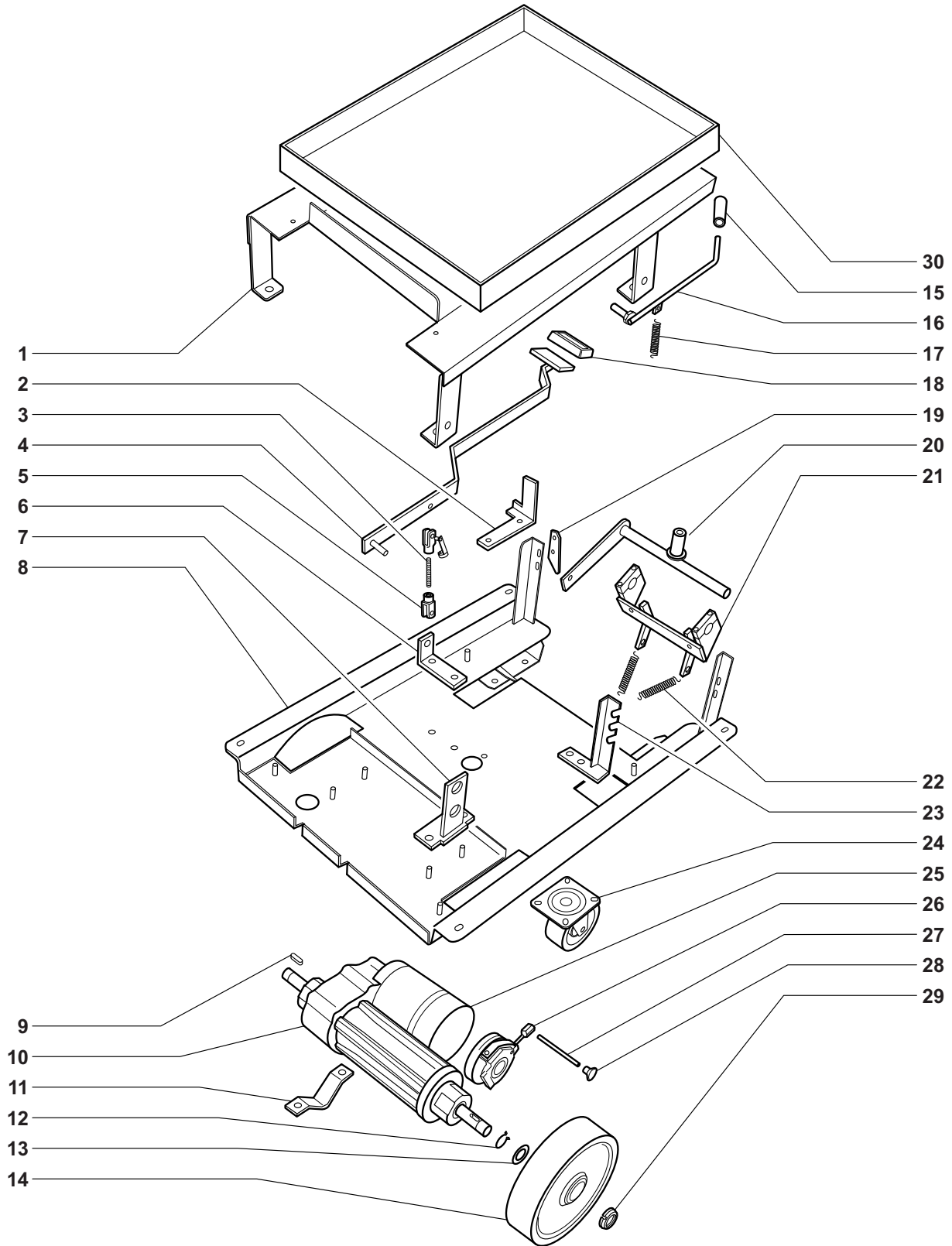


**WARNING: OPERATOR MUST READ AND UNDERSTAND THIS MANUAL
COMPLETELY BEFORE OPERATING THIS EQUIPMENT.**

Save These Instructions

SCHEMATICS - PARTS LISTS

PFS32 FRAME ASSEMBLY



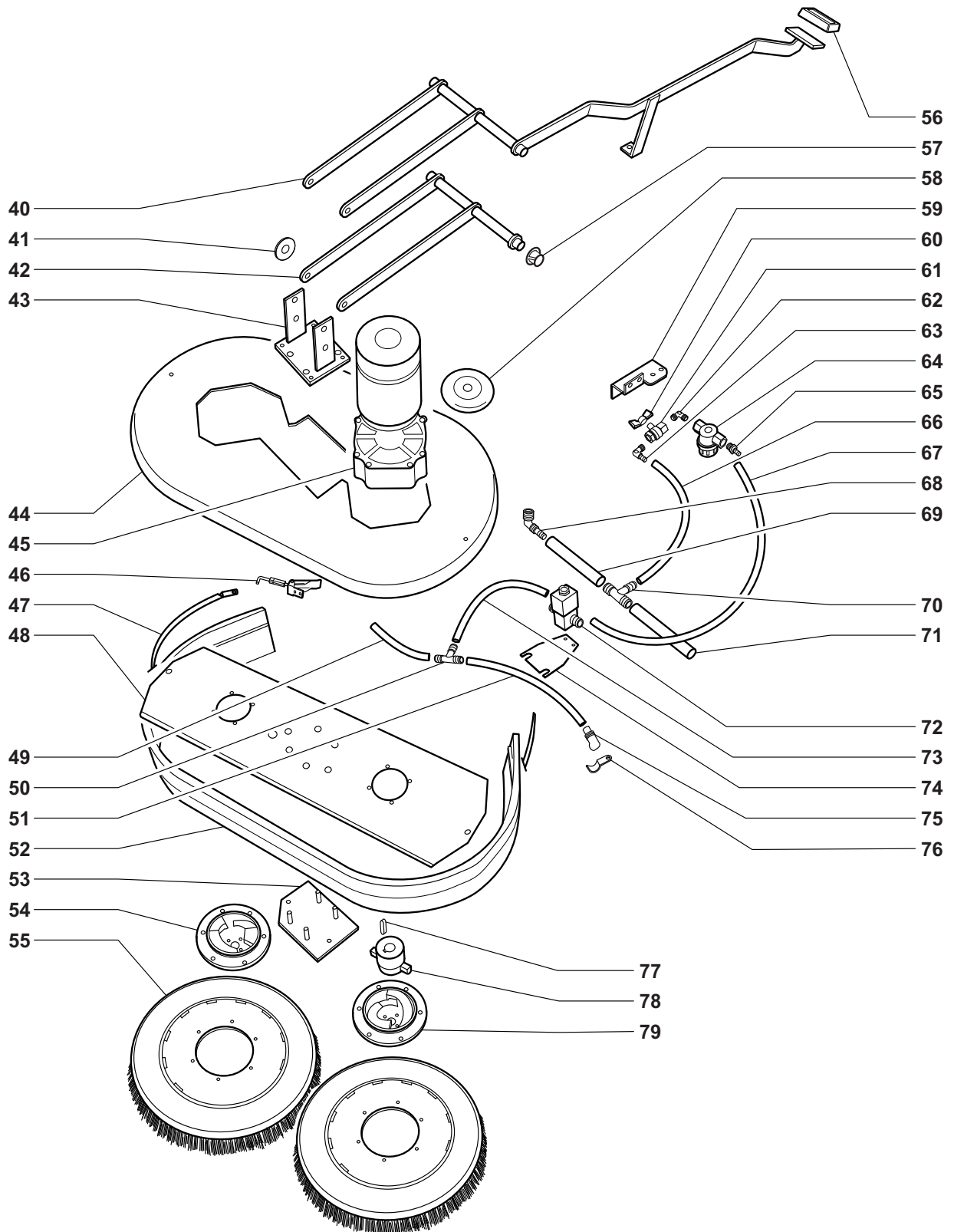
SCHEMATICS - PARTS LISTS

PFS32 FRAME ASSEMBLY

No.	Part No.	Qty	Description
1	720.001	1	Frame Bracket
2	720.002	1	Bracket
3	860.039	1	Tie Rod
4	720.004	1	Squeegee Lifting Pedal
5	500.120	1	Fork
6	700.030	1	Angle Bracket
7	650.114	1	Bracket
8	720.008	1	Frame
9	501.236	2	Square Key
10	701.500	1	Transaxle
11	510.011	1	Transaxle Bracket
12	PAS491	2	Seegere Ring
13	PAS356	2	Washer
14	PAS298	2	Wheel
15	701.043	1	Handle
16	720.016	1	Brush Pressure Adjustment Lever
17	400.087	1	Spring
18	PAS14	1	Pedal Cover
19	430.108	1	Foot Pedal Catch
20	700.044.1	1	Lever
21	700.045.2	1	Support
22	PAS230	2	Spring
23	701.039	1	Bracket
24	PAS51B	2	Swivel Caster
25	PAS485	1	Motor
26	701.517	1	Electric Brake
27	565.239	1	Tie Rod
28	500.061	1	Knob
29	PAS358	2	Ring Nut
30	700.220	1	Battery Tray

SCHEMATICS - PARTS LISTS

PFS32 BRUSH HEAD



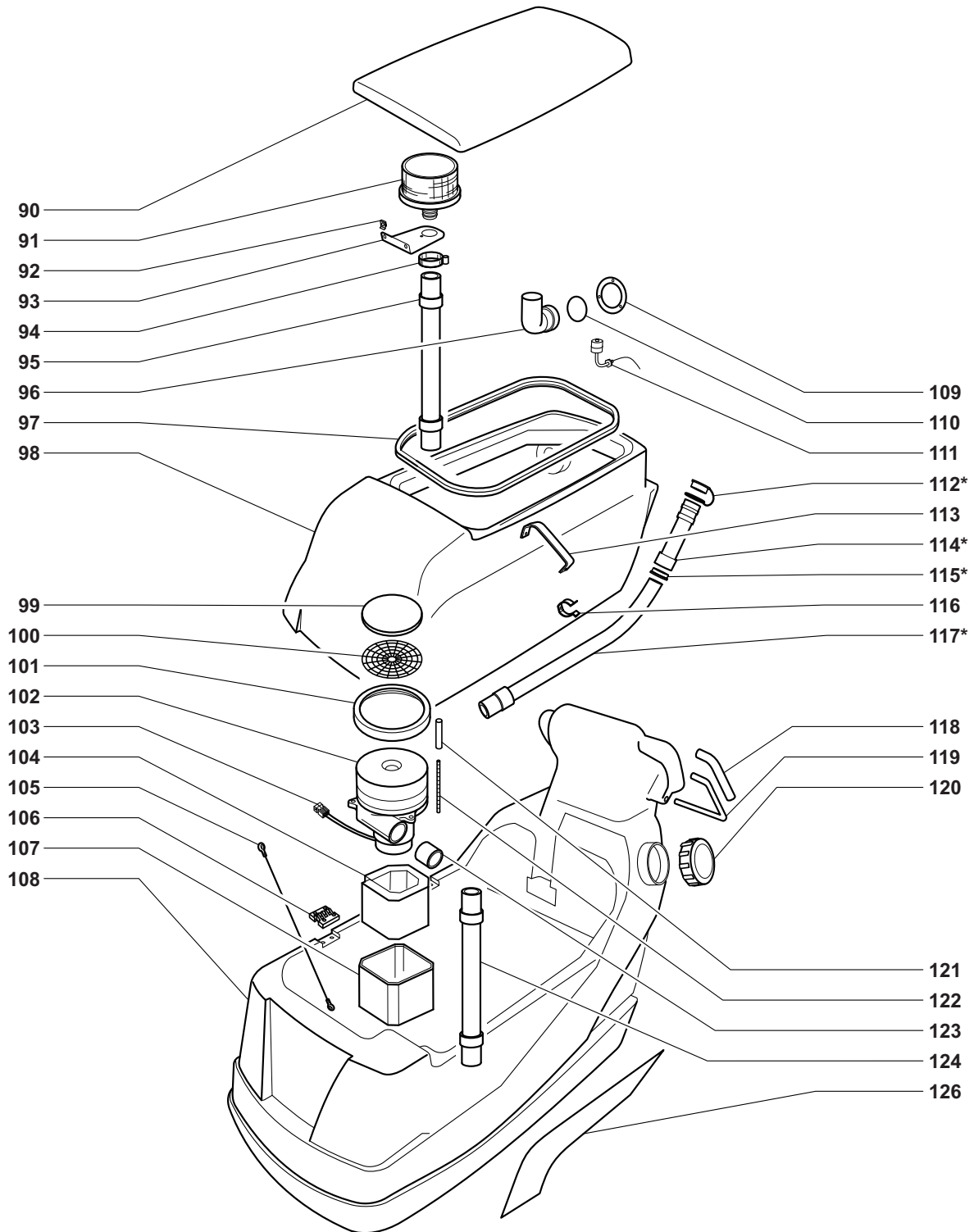
SCHEMATICS - PARTS LISTS

PFS32 BRUSH HEAD

No.	Part No.	Qty	Description
40	720.040	1	Foot Lever
41	710.093	1	Washer
42	720.042	1	Lever
43	701.024	1	Lever
44	820.044	1	Brush Deck
45	PFS118	1	Brush Motor
46	PAS122	1	Latch Assembly
47	820.047	1	Splash Guard Strap
48	820.048	1	Brush Plate
49	720.049	1	Hose
50	PAS82	1	T Fitting
51	720.051	1	Hose
52	850.305	1	Spalsh Guard
53	700.085	1	Plate
54	PFSCPR	1	Clutch Plate Right
55	PFS16PDR	2	Pad Holder (Right)
	PFS16PDL	1	Pad Holder (Left)
56	PAS14	1	Pedal Cover
57	710.088	1	Bushing
58	PAS1	2	Bumper Wheel
59	720.059	1	Solution Filter Support
60	PAS2043	1	Solution Control Knob
61	PFS0027	1	Ball Valve
62	360.129	1	Fitting
63	PAS296	1	Fitting
64	PFS0025	1	Filter
65	410.040	1	Fitting
66	720.066	1	Hose
67	720.067	1	Hose
68	PAS2065	1	Fitting
69	720.069	1	Hose
70	610.158	1	T Fitting
71	720.071	1	Hose
72	PAS2035	1	Solenoid Valve
73	720.073	1	Hose
74	720.074		Support Plate
75	PAS2038	1	Hose Fitting
76	PAS2039	2	Pipe Support
77	PFS0017	2	Square Key
78	PFS0018	2	Driver
79	PFSCPL	1	Clutch Plate Left

SCHEMATICS - PARTS LISTS

PFS32 TANKS AND VACUUM MOTOR



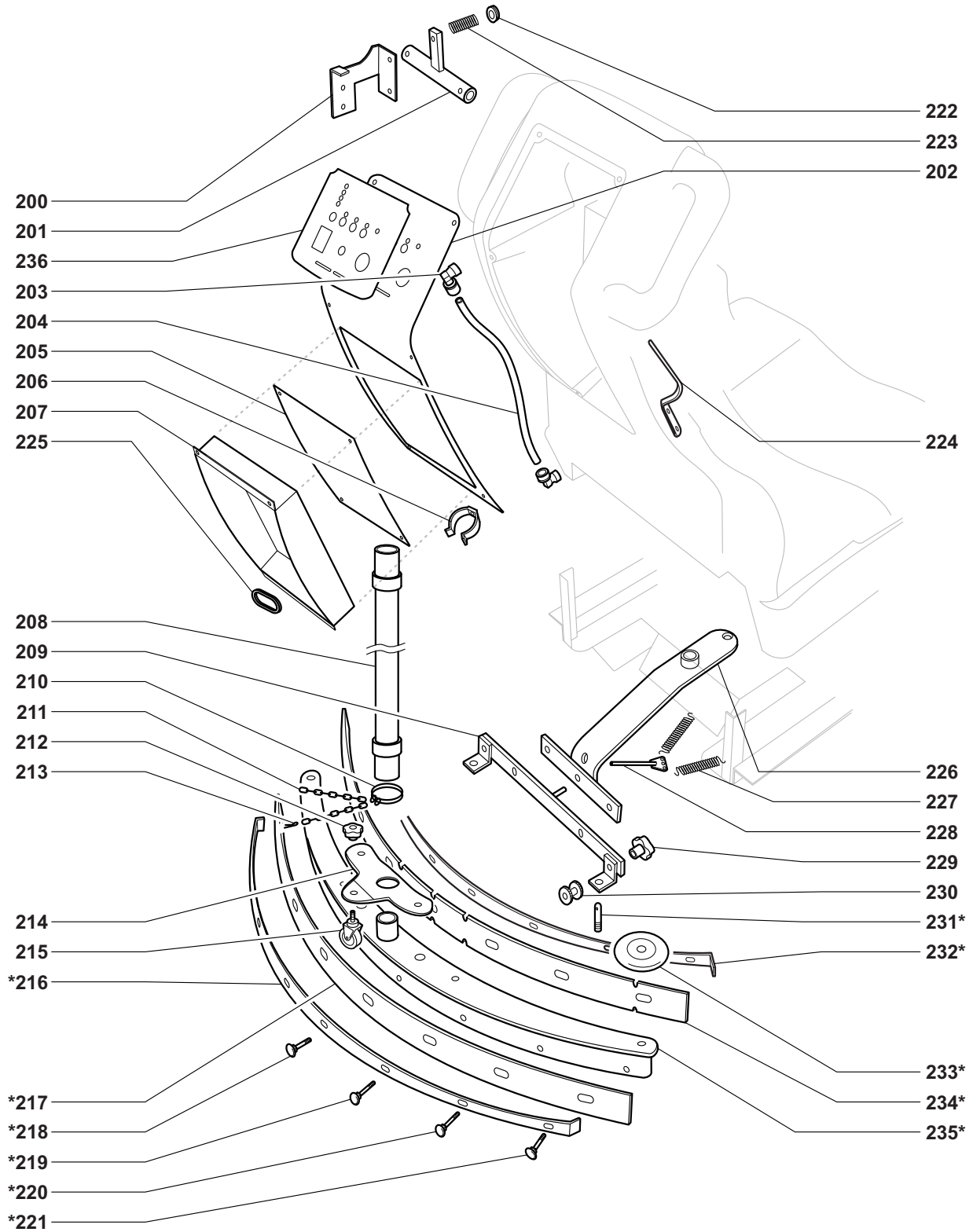
SCHEMATICS - PARTS LISTS

PFS32 TANKS AND VACUUM MOTOR

No.	Part No.	Qty	Description
90	720.090	1	Cover
91	PFS0046	1	Vacuum Filter
92	PFS0047	1	Spring Clip
93	PFS0048	1	Support
94	PAS2072	1	Hose Clamp
95	PFS0050	1	Stand pipe
96	1000.279	1	Elbow
97	720.097	1	Seal
98	720.098	1	Tank
99	PFS0065	1	Filter
100	PAS79	1	Screen
101	PAS102	1	Motor Gasket
102	PFS0101	1	Vacuum Motor (550W)
103	PFS0015	2	Connection
104	PFS0068	1	Sponge
105	PFS0032	1	Cable
106	PFS0053	2	Hinge
107	430.266.2	1	Cover
108	720.108	1	Tank
109	720.109	1	Gasket
110	435.073	1	Seal
111	PFS0092	1	Float Switch
112	PFS0059	1	Plug *
113	PFS0055	2	Recovery Tank Strap
114	PFS0060	1	Hose *
115	520.169	1	Support *
116	505.107	1	Hose Clip
117	720.117	1	Hose *
118	PFS0062	2	Rubber
119	PFS0063	2	Lever
120	PFS0064	1	Solution Tank Cap
121	720.121	3	Spacer
122	720.122	3	Tie Rod
123	PAS330	1	Vacuum Hose Coupler
124	710.259	1	Hose
*	720.125	1	Complete Drain Hose
126	720.126	2	Decals

SCHEMATICS - PARTS LISTS

PFS32 SQUEEGEE AND BODY WORK



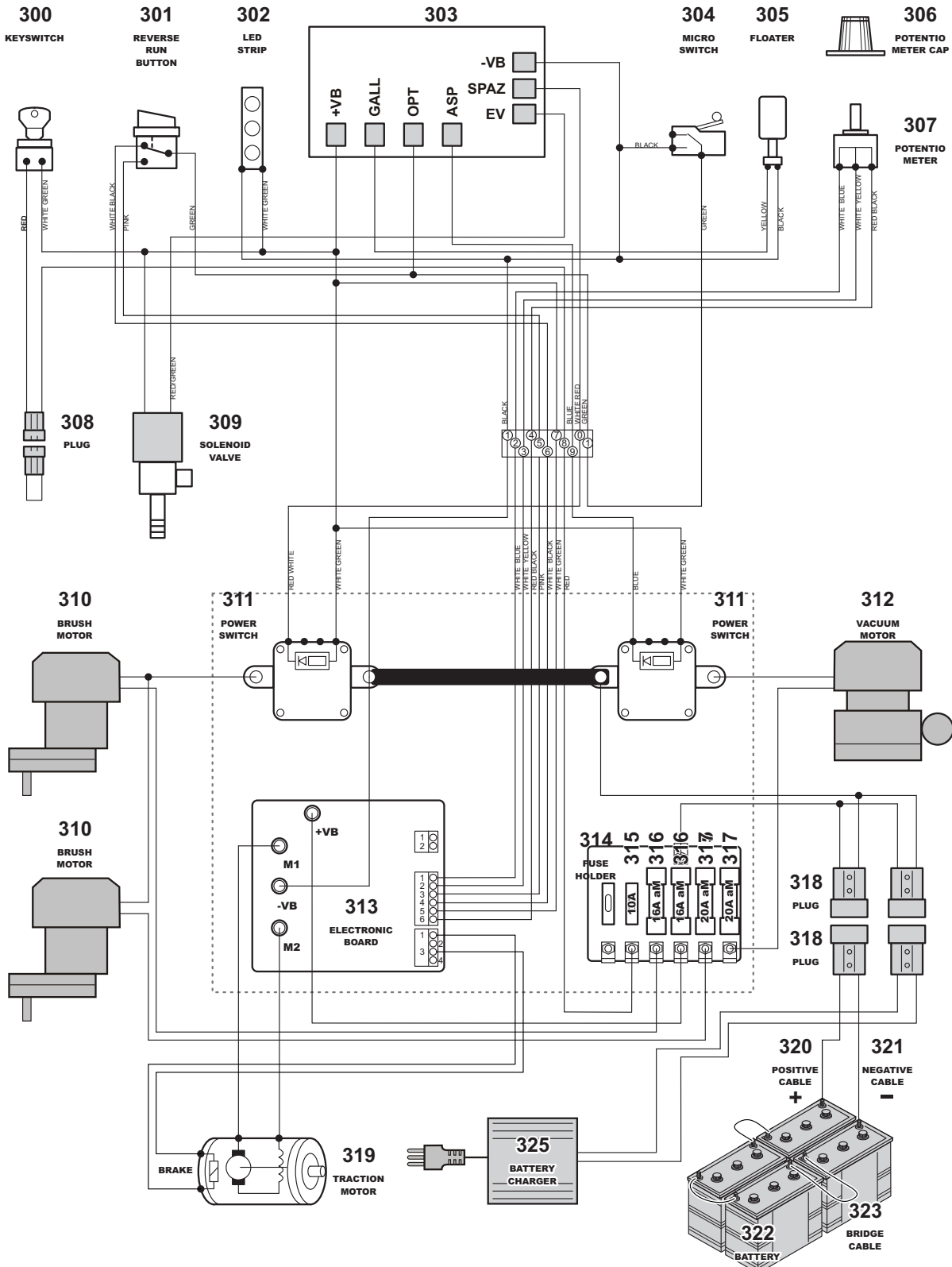
SCHEMATICS - PARTS LISTS

PFS32 SQUEEGEE AND BODY WORK

No.	Part No.	Qty	Description
200	PFS0084	1	Support
201	PFS0071	1	Lever
202	720.202	1	Panel
203	PFS0077	2	Hose Fitting
204	720.204	1	Hose
205	720.205	1	Panel
206	PAS2069	1	Hose Clip
207	720.207	1	Support
208	720.208	1	Squeegee Hose
209	801.266	1	Squeegee Support
210	PAS2075	1	Hose Clamp
211	PAS41	1	Chain and Split Pins
212	701.292	2	Knob
213	PAS41	1	Chain and Split Pins
214	710.13	1	Support Plate
215	701.291	1	Caster Wheel
216	700.283	1	Rear Retainer Strip
217	700.263.L	1	Rear Squeegee Rubber
218	PFS0087	2	Screw M6 x 70
219	PFS0087	2	Screw M6 x 70
220	PFS0089	2	Screw M6 x 60
221	PFS0081	2	Screw M6 x 50
222	PFS0070	1	Gromet
223	PFS0082	1	Spring
224	PFS0072	1	Support
225	PFS0097	1	Gasket
226	700.047.2	1	Support Arm
227	PAS230	2	Spring
228	701.260.1	1	Tie Rod
229	PAS33	1	Knob
230	PAS34	1	Regulator
231	PAS942	2	Pin
232	700.262	1	Front Retainer Strip
233	PAS1	2	Bumper Wheel
234	700.265.L	1	Front Squeegee Rubber
235	PFS139	1	Squeegee Body
236	820.236	1	Panel Decal
	710.19	1	Complete Squeegee Assembly

SCHEMATICS - PARTS LISTS

PFS32 ELECTRICAL



SCHEMATICS - PARTS LISTS

PFS32 ELECTRICAL

No.	Part No.	Qty	Description
300	PAS53NS	1	Key Switch
301	PAS295	1	Reverse Button
302	PFS0090	1	LED Strip
303	PFS0091	1	Electronic Card
304	PAS56	1	Drive Micro Switch
305	PFS0092	1	Float
306	PFS0093	1	Knob
307	PAS55	1	Potionmeter
308	PFS0015	2	Connector
309	PAS2035	1	Solenoid Valve
310	PFS0033	2	Brush Motor
311	PAS57	2	Power Switch
312	500.257.3	1	Vacuum Motor
313	PAS294A	1	Electroinc Control Board
314	PFS0094	4	Fuse Holder
315	PFS0095	1	Fuse 10A
316	PAS117	2	Fuse 16A
317	PAS118	2	Fuse 20A
318	PAS59R	1	Connector
319	PAS485.1	1	Complete Transaxle
320	PAS140	1	Connector w/ Battery Cables
322	TBD	2	Wet Lead-Acid Battery 12V 240 Ah
322	TBD	2	GEL- AGM Battery 12V 240Ah
323	PAS141	1	Jumper Cable
324	720.324	1	Complete Wiring
325	PFS0102	1	Battery Charger

For warranty information go to www.Powr-Flite.com

Powr-Flite®

A Tacony Company

3101 Wichita Court • Fort Worth, TX 76140-1755

1-800-880-2913 • Fax: 1-817-551-0719