

Powr-Flite®

OPERATOR'S MANUAL

COMMERCIAL AXIAL FAN

**Standard F5 Models
PDF5, PDF5DX**



**WARNING: OPERATOR MUST READ AND UNDERSTAND THIS MANUAL
COMPLETELY BEFORE OPERATING THIS EQUIPMENT.**

Save These Instructions

IMPORTANT SAFETY INSTRUCTIONS

READ ALL INSTRUCTIONS BEFORE USING THIS APPLIANCE

When using an electrical appliance, basic precautions should always be followed.

WARNING: To reduce the risk of fire, electric shock or injury:

Do not leave machine when plugged in.

Do not leave machine connected to the electricity supply when not in use.

Do not leave the machine unattended while running.

Only use accessories or spares specifically designed for use with this appliance. The fitting of other accessories or spare parts may affect the machines performance and safety.

Unplug from outlet before servicing.

Use only as described in this manual. Use only manufacturer's recommended components and attachments.

Use only indoors. Do not use outdoors or expose to rain.

Do not use with damaged cord or plug. If appliance is not working as it should, has been dropped, damaged, left outdoors, or dropped into water, return it to an authorized service center.

Do not pull or carry by cord, use cord as a handle, close door on cord, or pull cord around sharp edges or corners. Keep cord away from heated surfaces.

Do not unplug by pulling on cord. To unplug, grasp the plug, not the cord.

Do not handle plug or appliance with wet hands.

Do not put any object into openings. Do not use with any opening blocked; keep free of dust, hair and anything that may reduce air flow.

Turn off all controls before unplugging.

Do not attempt to service the unit while appliance is plugged in.

Appliance may cause a fire when operating near flammable vapors or materials. Do not operate this machine near flammable fluids, dust or vapors.

Connect to a properly grounded outlet.

Do not use with any solid state speed control device.

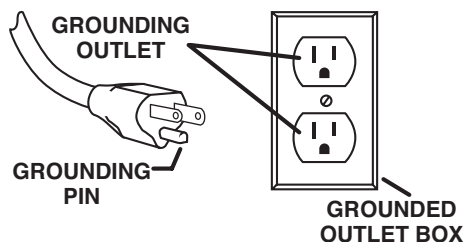
This unit is thermally protected.

GROUNDING INSTRUCTIONS

This appliance must be grounded. If it should malfunction or breakdown, grounding provides a path of least resistance for electric current to reduce the risk electric shock. This machine is equipped with a cord having an equipment grounding conductor and grounding plug. The plug must be inserted into an appropriate outlet that is properly installed and grounded in accordance with all local codes and ordinances.

WARNING: Improper connection of the equipment-grounding conductor can result in a risk of electric shock. Check with a qualified electrician or service person if you are in doubt as to whether the outlet is properly grounded. Do not modify the plug provided with the appliance - if it will not fit the outlet, have a proper outlet installed by a qualified electrician.

This appliance is for use on a nominal 120-volt circuit, and has a grounding plug that looks like the plug illustrated in sketch A



A

OPERATING INSTRUCTIONS

1. Plug in to a standard outlet with the correct voltage and amperage for the unit.
2. Place the dryer in the desired operating position.
3. Set the switch at the desired speed: low or high.
4. Check for proper operation before leaving the unit unattended.

Do not move or carry the dryer when it is running.

Daisy-chained: Up to 6 units may be plugged into on a single 15 amp circuit and up to 9 on a 20 amp circuit. The F5 is equipped with dual power outlets that will allow you to “daisy chain” up to 5 units units. Do not “daisy chain” more than 5 units. The F5 power system has a 12 amp circuit breaker built in that will trip if more than 5 units are “daisy chained” from a single machine.

12 AMP Resettable Circuit Breaker

The F5 Powr-Dryer features a 12 amp circuit breaker that will “trip” if more than 12 amps of electrical current is drawn through the cord.

GFCI Protection and Outlet

The F5 Powr-Dryer provides a standard duplex GFCI outlet for daisy-chaining multiple units together. The GFCI protection promotes operator safety and will “trip” is an electrical ground fault is sensed. To test the GFCI protection, press the TEST button. If operating properly, the RESET button on the GFCI outlet will pop out.

Operating Positions

The F5 Powr-Dryer is designed to operate in multiple positions for any type of drying.

1. **Tilt Back** – Tilt the F5 backward on the four curved molded legs at an angle to direct air for elevated drying.
2. **Upright** – Set the F5 square with the handle on the top to direct air across a room.
3. **Tilt Forward** – Tilt the F5 forward on the “standing legs” at an angle to direct airflow along the flow in front of the dryer.
4. **Face Down** – Set the F5 on the four curved molded legs with the “standing legs” facing up to direct air straight down.
5. **Powr Pitch** – Model PDF5 is equipped with a 3° down angle leg.
6. **Stack for Storage** – the F5 Powr-Dryer interlock and stack for easy storage and transport.



2 position switch and daisy-chained outlets



Cord wrap



FOR BEST PERFORMANCE

- Keep machine clean and in good operating condition.
- Have machine checked periodically by your authorized service center.
- Use only authorized service centers for parts or service
- Store machine carefully in dry area.
- For optimum drying performance and safety, study and follow your operators manual.

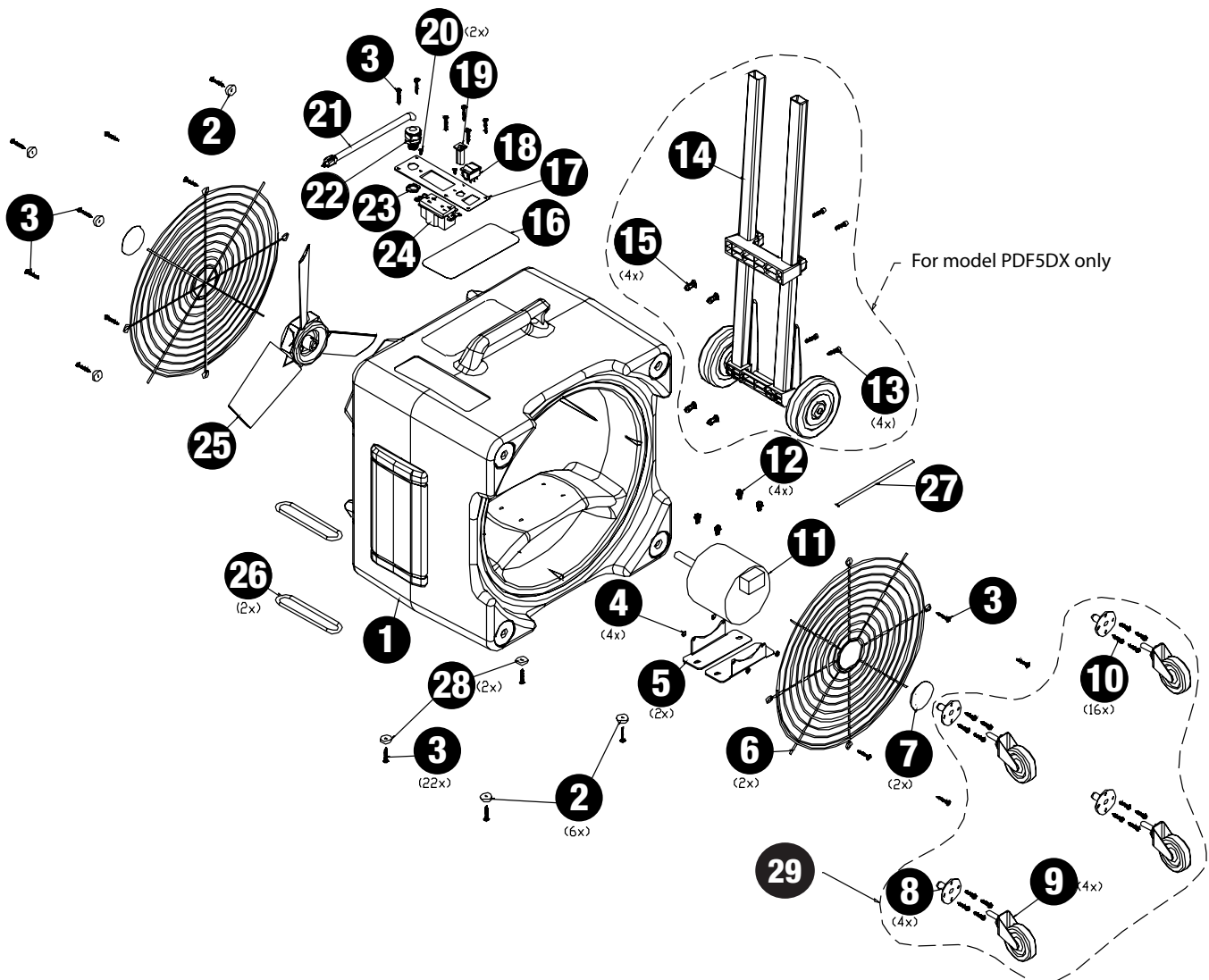
MAINTENANCE/TROUBLE SHOOTING

Periodic Maintenance

1. Check power cord for any breaks, separations or cuts.
2. Make sure the ground pin or grounding prong is intact or the machine will be unsafe to operate.

Trouble Shooting (if the dryer will not run)

1. Check electrical cord; is it firmly seated in wall outlet
2. Check GFCI and reset if tripped
3. Check if dryer circuit breaker is tripped, reset if necessary.
4. Check to see if building circuit breaker is tripped. If circuit is overloaded, move cord to different GFCI outlet.
5. If using an extension cord, make sure it is in good condition, proper gauge and firmly connected.



No.	Part No.	Qty	Description
1	X9180	1	Housing
2	PD3C	8	Rubber Foot
3	X9098	22	Screw #10 x 1"
4	X8260	4	Nylon Locnut
5	72719A	2	Motor Bracket
6	X9183	2	Grill
7	X9189	2	Round Label
8	X9195	4	Caster Reciever (PDF5DX Only)
9	P50	4	Wheel and Socket (PDF5DX Only)
10	X9098	16	Screw #12 x 1" Zinc (PDF5DX Only)
11	X9181	1	Motor 115VAC .25HP 4 Pole
12	X8209S	1	Screw 1/4-20 x 1/2"
13	X9065	2	Screw 1/4-20 x 1-1/4"
14	X8990N	1	Handle/Wheel Assembly
15	X8848	2	Jacknut, 1/4-20, Steel #8
16	X9190	1	Product Label
17	72721A	1	Switch Panel
18	X9048	1	Rocker Switch
19	X9186	1	Circuit Breaker 12A
20	X9188	2	Screw, 6-32 x 3/8"
21	X8926	1	Power Cord 115VAC 16/3 20' SJTW YLW
22	PD8	1	Strain Relief
23	X8008N	1	Lock Nut 1/2" Steel Conduit
24	X9187	1	GFCI Outlet Female
25	X9182P50	1	Fan Blade Assembly
26	F631	2	Round Belt
27	72470A	14	Heat Shrink, Blk, 1/2" Wide
28	PD3B	2	Rubber Foot (PDF5DX Only)
29	PDF5C	AR	Caster Kit (Optional on PDF5)

For warranty information go to www.Powr-Flite.com

Powr-Flite®

A Tacony Company

3101 Wichita Court • Fort Worth, TX 76140-1755

1-800-880-2913 • Fax: 1-817-551-0719