

Commercial Black Max Downdraft™ Dryer

Model PD10K

Operator and Parts Manual



IMPORTANT SAFETY INSTRUCTIONS

READ ALL INSTRUCTIONS BEFORE USING THIS APPLIANCE

When using an electrical appliance, basic precautions should always be followed.

WARNING- To reduce the risk of fire, electric shock or injury:

Use only as described in this manual. Use only manufacturer's recommended components and attachments.

Use only indoors. Do not use outdoors or expose to rain.

Do not use with damaged cord or plug. If appliance is not working as it should, has been dropped, damaged, left outdoors, or dropped into water, return it to your Authorized dealer.

Do not pull or carry by cord, use cord as a handle, close door on cord, or pull cord around sharp edges or corners. Keep cord away from heated surfaces.

Do not unplug by pulling on cord. To unplug, grasp the plug, not the cord.

Do not handle plug or appliance with wet hands.

Do not put any object into openings. Do not use with any opening blocked; keep free of dust, hair and anything that may reduce air flow.

Turn off all controls before unplugging.

Do not attempt to service the unit while appliance is plugged in.

Appliance may cause a fire when operating near flammable vapors or materials. Do not operate this machine near flammable fluids, dust or vapors.

Connect to a properly grounded outlet.

Do not use with any solid state speed control device.

This unit is thermally protected.



Fig. 5

WARNING

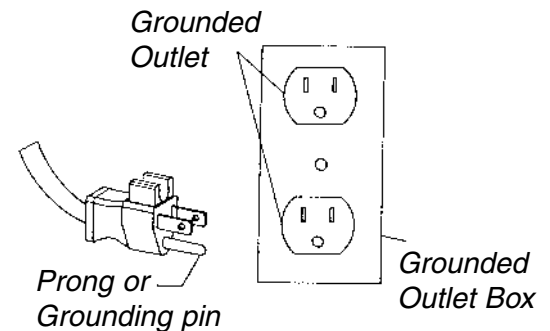
Do not stack dryers more than 4 (four) units high for transport, 5 (five) units high for storage.

GROUNDING INSTRUCTIONS

This appliance must be grounded. If it should malfunction or break down, grounding provides a path of least resistance for electric current to reduce the risk of electric shock. This appliance is equipped with a cord having an equipment-grounding conductor and grounding plug. The plug must be plugged into an appropriate outlet that is properly installed and grounded in accordance with all local codes and ordinances.

*This appliance is for use on a nominal 120 volt circuit and has a ground plug (see illustration, right). Make sure that the appliance is connected to an outlet having the same configuration as the plug. No adaptor should be used with this appliance. **WARNING** - Improper connection of the equipment-grounding conductor can result in a risk of electric shock. Check with a qualified electrician or service person if you are in doubt as to whether the outlet is properly grounded. Do not modify the plug provided with the appliance – if it will not fit the outlet, have a proper outlet installed by a qualified electrician.

*This applies only to North America. Most other countries use 230V circuit.



FOR BEST PERFORMANCE

- Keep machine clean and in good operating condition.
- Have machine checked periodically by your Authorized Dealer.
- Use only authorized service centers for parts or service.
- Store machine carefully in dry area.
- For optimum drying performance and safety, study and follow your operators manual.

SAVE THESE INSTRUCTIONS

OPERATING INSTRUCTIONS

1. Plug into a standard outlet with the correct voltage and amperage for the unit.
2. Place the dryer in the desired operating position, lock casters.
3. Set the switch at the desired speed: low or high.
4. Check for proper operation before leaving the unit unattended.
Do not move or carry the dryer when it is running.

15 AMP Reset Circuit Breaker

The Downdraft™ Fan features a 15 amp circuit breaker that will “trip” if more than 12 amps of electrical current is drawn through the cord.

Operating Positions

The Downdraft™ Fan is designed to operate in multiple positions for any type of drying. (See figures below.)

1. **Face Down** – Set the Downdraft™ Fan on the four caster wheels to direct air straight down. Turn each caster to a 45° angle to the housing for best airflow.
2. **Tilt Back** – Tilt the Downdraft™ Fan backward on the four curved molded legs, at an angle, to direct air for elevated drying.
3. **Upright** – Set the Downdraft™ Fan square with the handle on the top to direct air across a room.
4. **Tilt Forward** – Tilt the Downdraft™ Fan forward on the “standing legs” at an angle to direct airflow along the flow in front of the dryer.
5. **Stack for Storage** – The Downdraft™ Fans interlock and stack for easy storage and transport. (See figure 5. on page 2)

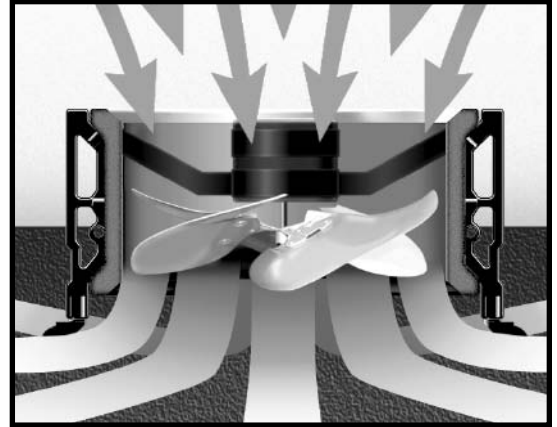


Fig. 1



Fig. 2



Fig. 3



Fig. 4

MAINTENANCE/TROUBLE SHOOTING

Periodic Maintenance

1. Check power cord for any breaks, separations or cuts.
2. Make sure the ground pin or grounding prong is intact or the machine will be unsafe to operate.

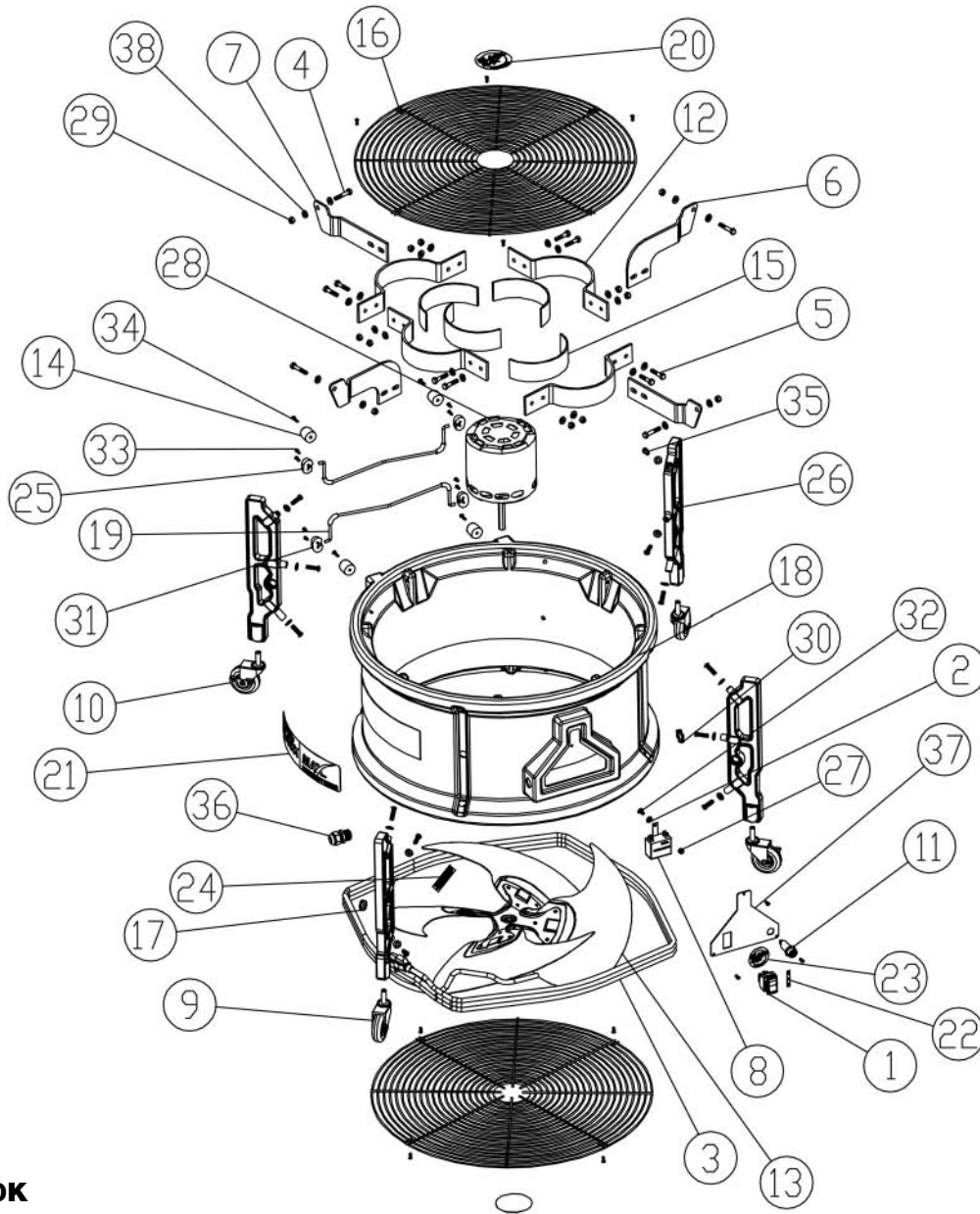
Trouble Shooting (if the dryer will not run)

1. Verify that electrical cord is firmly seated in wall outlet.
2. Check if dryer circuit breaker is tripped, reset if necessary.
3. Check to see if building circuit breaker is tripped. If circuit is overloaded, move cord to a different outlet.
4. If using an extension cord, make sure it is in good condition, proper gauge and firmly connected.

The Limited Warranty

The manufacturer warrants to the original purchases that products manufactured are free from defects, provided such goods are installed, operated and maintained in accordance with written manuals or other instructions for a period of 10 years on the housing, 2 years on the motor and 1 year on parts and workmanship, from date of purchase.

ASSEMBLY



Parts for PD10K

ITEM	PART NO	DESCRIPTION
1	X9411	3 position power switch
2	X8225	#10 flat washer
3	X8926	20',115v,16/3 power cord
4	X9398	1/4-20 X 1 1/2 hex bolt
5	X8843	1/4-20 X 1 1/4, black hex bolt
6	X9347	Lower motor bracket
7	X9346	Upper motor bracket
8	X9391	Capacitor
9	X9339	2.5" swivel caster
10	X9373	2.5" locking swivel caster
11	7FC003	15a circuit breaker
12	X9368	Motor Clamp
13	X9340	20" swept fan blade
14	PD3B	Tall rubber foot
15	X9333	Motor mount gasket
16	X9336	Fan grill
17	X9353	3/8" ID 7/8" OD grommet
18	X9356	Black housing
19	X8874	Dryer kickstand

ITEM	PART NO	DESCRIPTION
20	X9354	Grill label
21	X9355	Side label
22	X9388	Hi/Lo label
23	X9357	Switch plate logo label
24	X8976	Warning label
25	X8929	Left kickstand foot
26	X9345	Fan leg
27	X9371	#10 Black nylon lock nut
28	X9348	3/4 hp motor
29	X8237BK	1/4-20 Black nylon lock nut
30	X8008N	1/2" Steel conduit lock nut
31	X8928	Right kickstand foot
32	X9370	#10 X 1/2" black screw
33	X8261	#6 X 1/2 pan screw
34	X9349	#8X3/4" black sheet metal screw
35	X9387	1/4-20 X1 black machine screw
36	PD8	1/2" NPT strain relief
37	X9335	Switch plate
38	X8235BK	1/4" USS black washer