

# **Powr-Flite**<sup>®</sup>

## **OPERATOR'S MANUAL**

### **BlackMax Floor Machine** **Models: B171, B171HD, B172,** **B201, B201HD, B202**



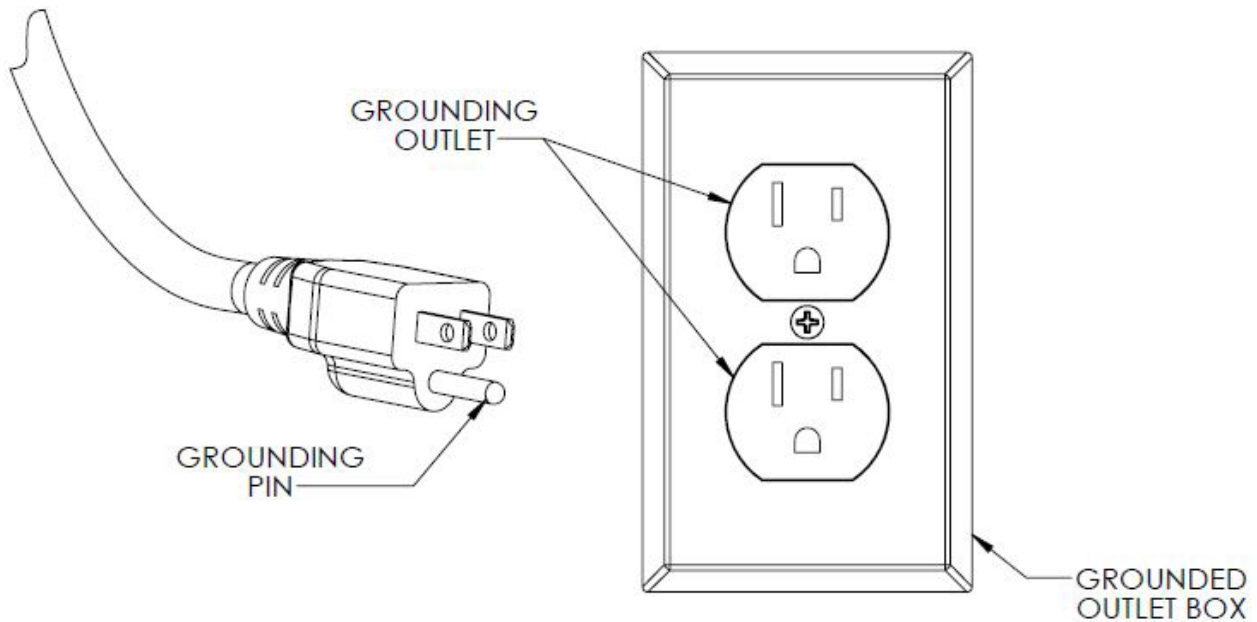
**WARNING: OPERATOR MUST READ AND UNDERSTAND THIS MANUAL  
COMPLETELY BEFORE OPERATING THIS EQUIPMENT.**

**Save These Instructions**

**This appliance must be grounded.** If it should malfunction or breakdown, grounding provides a path of least resistance for electric current to reduce the risk electric shock. This machine is equipped with a cord having an equipment -grounding conductor and grounding plug. The plug must be inserted into an appropriate outlet that is properly installed and grounded in accordance with all local codes and ordinances.

**WARNING:** Improper connection of the equipment-grounding conductor can result in a risk of electric shock. Check with a qualified electrician or service person if you are in doubt as to whether the outlet is properly grounded. Do not modify the plug provided with the appliance - if it will not fit the outlet, have a proper outlet installed by a qualified electrician.

This appliance is for use on a nominal 115-volt circuit, and has a grounding plug that looks like the plug illustrated in sketch A



A



**PROTECT THE ENVIROMENT**  
Please dispose of packaging materials in an enviromentally safe way according to local waste disposal regulations.



Always remember to recycle.

## **UN-PACKAGING MACHINE**

Your Powr-Flite® Floor Machine was protectively packed to prevent damage in shipment. We suggest that upon removing the unit from its carton, you carefully inspect it for any possible damage in transit. If damage is discovered, immediately notify the transportation company who delivered your machine. As a manufacturer, we are unable to act upon any claim for concealed damage; you must originate the claim.

## **IMPORTANT SAFEGUARDS**

This machine is designed to be safe when used to perform the functions specified in this Operator's Manual. Should damage occur to electrical or mechanical parts, the machine should be repaired by the manufacturer or competent service station before using to avoid further damage to the machine or physical injury to user. Your floor machine is equipped with a safety switch lockout device designed for your safety. Do not attempt to bypass or defeat the safety lockout device. Never use any device to lock the power switch triggers in the ON position.

**THIS MACHINE IS NOT A TOY. FAILURE TO FOLLOW SAFETY PROCEDURES AND INTENTIONAL MISUSE COULD RESULT IN DAMAGE TO THE MACHINE OR USERS. FOLLOW ALL SAFETY INSTRUCTIONS.**

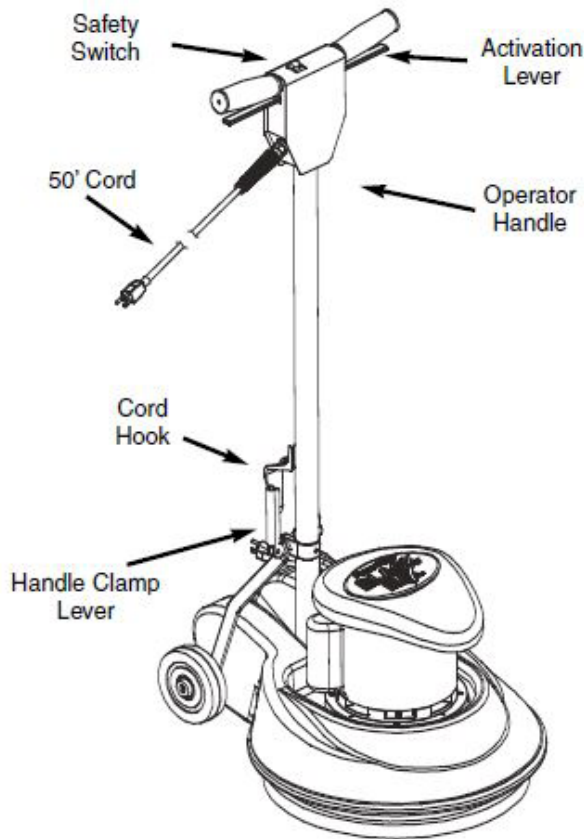
To reduce risk of fire, electric shock, or injury:

- This machinery should only be used by trained personnel.
- Do not leave floor machine unattended when plugged in. Unplug the electrical cord when not in use and before servicing.
- Do not allow to be used as a toy. Close attention is necessary when used by or near children.
- Use only as described in this manual. The use of accessories which have not been approved or supplied by the manufacturer may be dangerous.
- Do not use with damaged cord or plug. If floor machine is not working as it should, has been dropped, damaged, left outdoors, or dropped into water, return it to service center before using.
- Do not pull or carry by cord, use cord as a handle, close a door on cord, or pull a cord around sharp edges or corners.
- Do not run floor machine over cord.
- Keep cord away from heated surfaces.
- Do not use extension cords or outlets with inadequate current carrying capacity.
- Release handle before unplugging.
- Do not handle plug or floor machine with wet hands.
- Do not put any objects into openings.
- Do not use with top of the unit covered. Keep free of dust, lint, hair, and anything that may reduce airflow around the top of the motor.
- Keep loose clothing, hands feet and any other object away from the bottom of the machine during use.
- Do not use this machine around flammable materials or liquids.
- Maintenance and repair must be done by an authorized repair center.
- Store your cleaner indoors in a cool dry area.
- Do not unplug by pulling on cord. To unplug, grasp the plug, NOT THE CORD.

**THIS MODEL IS GROUNDED, CONNECT TO A PROPERLY GROUNDED OUTLET ONLY.**

## OPERATING INSTRUCTIONS

### MACHINE COMPONENTS



### MACHINE OPERATION

1. Carefully unwrap power cord and check for tangles and knots and plug into a properly grounded outlet.
2. Pull up on the handle clamp lever to unlock handle, adjust handle to the lowest comfortable position.
3. Push down on the handle clamp lever to lock handle in place.
4. Place both hands on the operator handle, place the right thumb of the safety switch and press. Gently squeeze the activation lever.
5. Begin operation.

### MAINTENANCE

#### After Use:

Clean all surfaces of the machine and carefully wrap cord under the cord hook and over the handle.

Remove pad driver or brush.

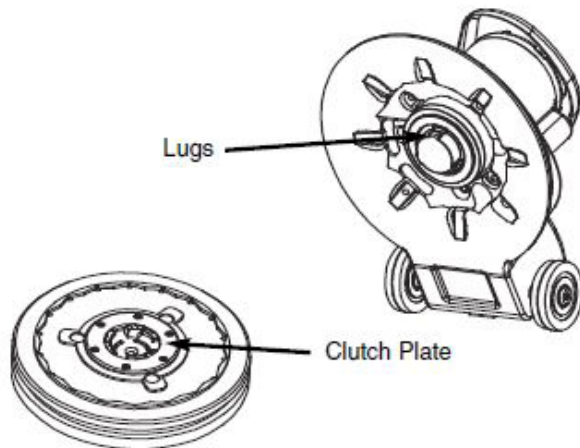
#### Monthly:

Inspect cord for damage. Tighten strain relief.

#### Annually:

Replace cord and strain relief.

### INSTALLING PAD DRIVERS & BRUSHES

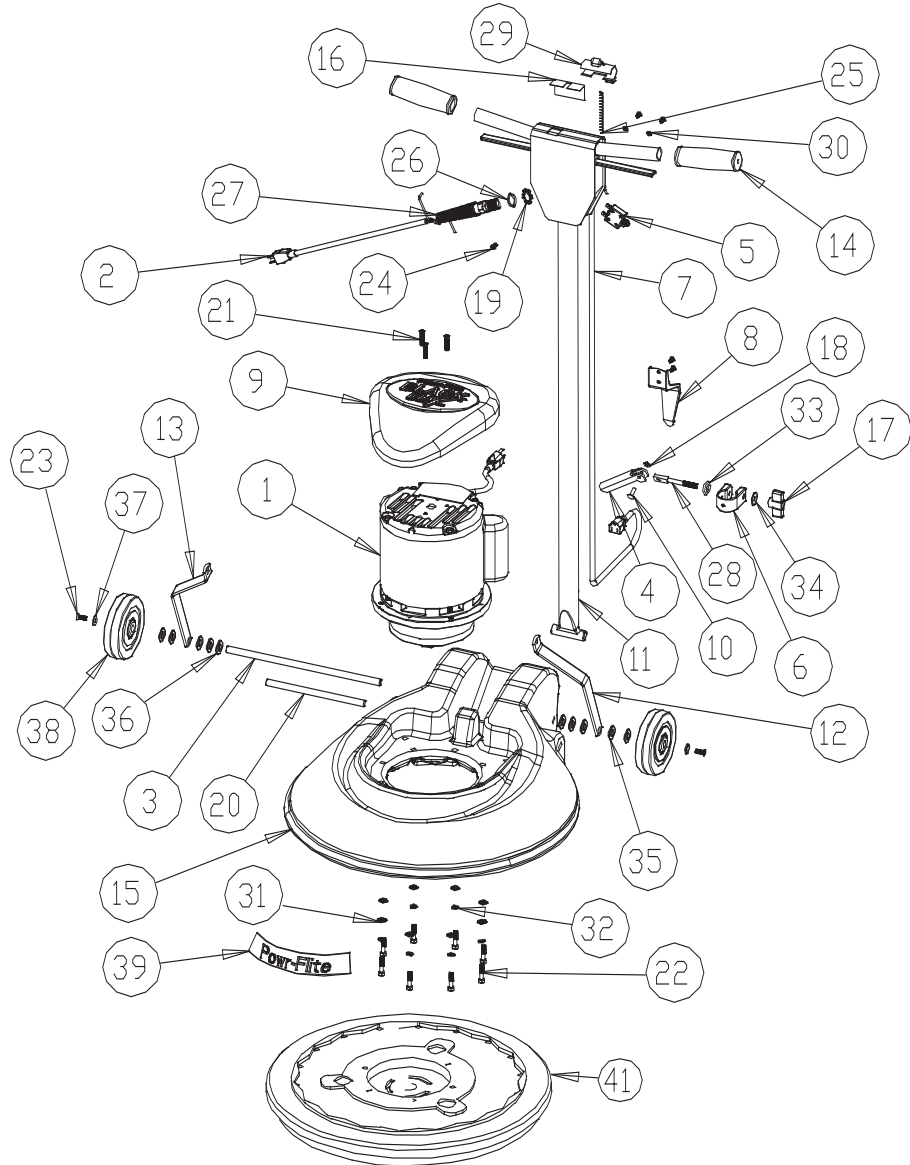


Align the notches in the clutch plate with the lugs. Insert lugs into clutch plate and turn counter clockwise until the clutch plate locks into place. To remove, give a quick, hard turn clockwise.

### PAD DRIVERS & BRUSHES SIZING

The 17" and 20" floor machines will accept full 17" (17" machine) and 20" (20" machine) pad drivers and brushes without the use of a riser. However, certain specialty accessories may require use of a riser and/or a smaller block to avoid interference with the housing.

# PARTS LIST



No.	Part No.	Qty	Description
1	X8981	1	Motor 175 RPM 1 HP (B171, B201)
	X8980-TI	1	Motor 175 RPM 1.5 HP (B171HD, B201HD)
	X8071-TI	1	Motor 175/320 RPM 1.5 HP (B172, B202)
2	M1369AS	1	Power Cord 50', 14/3, SJTW
3	X8936	1	Axle
4	X8014	1	Cam Lever Handle
5	X8023	1	Circuit Breaker 15A
6	X8012	1	Handle Collar Clamp
7	X8989	1	Black Cord 4' SJTW
8	X8013	1	Cord Hook
9	X9420	1	Motor Cover
10	X8031	1	Dowel Pin
11	X8911	1	Handle Assembly
12	X8807L	1	Handle Brace Left
13	X8807R	1	Handle Brace Right
14	X8941	2	Handle Grip
15	X9418	1	17" Housing
	X9419	1	20" Housing
16	X8923	1	Insulation Sheet
17	X8016	1	Handle Clamp Knob
18	X8032	1	Lock Nut
19	X8008N	1	Steel Conduit Lock Nut, 1/2
20	X8977	1	Pivot Pin
21	X9422	3	Screw 10-32 x 1-1/4"
22	X8226	8	Screw 1/4-20 x 1-1/4"
23	X8265	2	Screw 1/4-20 x 3/4"
24	X8207	1	Screw 10-24 x 1/2"
25	X8915	1	Trigger Spring
26	SR36	1	Strain Relief Washer
27	SR37	1	Strain Relief
28	X8015	1	Cam Lever Stud
29	X8914	1	Trigger Safety Switch
30	7CY001	3	#10 Toothed Washer
31	X8235	8	Washer
32	X8212	8	Lock Washer
33	X8028	1	Slotted Cam Washer
34	X9374	1	Washer
35	X8108	6	Nylon Washer
36	X8101	4	Spring Washer
37	X8020	2	Countersunk Axle Washer
38	X8024	2	Wheel 5"
39	X8400C	1	Label
40	TPD17	1	17" Pad Driver (B171, B171HD, B172)
	TPD20	1	20" Pad Driver (B201, B201HD, B202)

For warranty information go to [www.Powr-Flite.com](http://www.Powr-Flite.com)

***Powr-Flite***<sup>®</sup>

A Tacony Company

3101 Wichita Court • Fort Worth, TX 76140-1755  
1-800-880-2913 • Fax: 1-817-551-0719