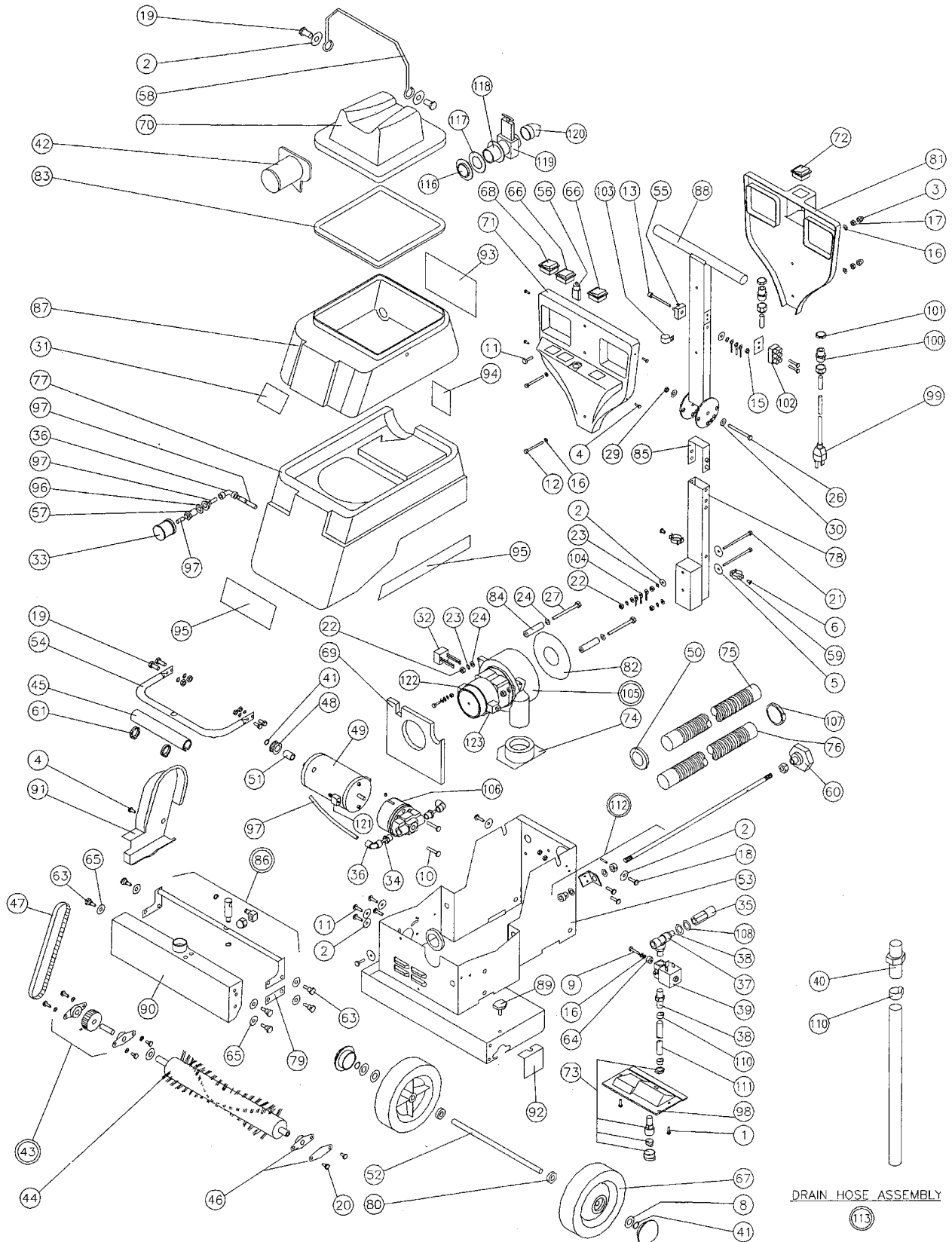


EXTRACTORS

Parts for PFX7S



EXTRACTORS

Parts for PFX7S

ref#	order#	description
1	2-218	No.6 x 112" ST Screw
2	X8218	5mm x 20mm Washer
3	2-3396	M5 Dome Nut Black
4	2-3397	No 6 x 318 Pan Pozi Black
5	2-3399	M6 x 30 Washer Black
6	2-3405	1/8 x 8mm Pop Rivet
8	M12-LG-ZN	M12 Plain Washer
9	SC230	M4 x 16 Pozi Pan Screw
10	SC87	M4 x 20 Pozi Screw
11	SC55	M5 x 10 Pozi Pan Screw
12	M5-E-BK	M5 x 40 Hex Screw Black
13	M5-70-A-ZN	M5 x 70 Socket Cap Screw
14	SC80	M5 x 8Pan Screw
15	M5-I-BK	M5 Full Nut Black
16	M5-LG-BK	M5 Plain Washer Black
17	M5-P-ZN	M5 Single Coil Washer
18	M6-10-E-ZN	M6 x 10 Hex Set Screw
19	SC45	M6 x 16 Hex Set Screw
20	SC143	M6 x 8 Pozi Pan Screw
21	SC206	M6 x 80 Hex Head Screw
22	M6-I-ZN	M6 Full Nut
23	M6-P-BK	M6 Single Coil Washer Black
24	M6-S-ZP	M6 External Shake proof Washer
25	M8-20-E-ZN	M8 x 20 Hex Head Bolt
26	SC207	M8 x 75 Hex Head Screw
27	M8-80-E-ZN	M6 x 80 Hex Head Screw
28	SC208	M8 Full Nut
29	SC209	M8 Nylon Washer
30	SC210	M8 Plain Washer
31	X8438	Powr-Flite Logo Label
32	SC51	Suppressor Surge 110v USA
33	SC14	Filter Element
34	SC102	Adapter Stern for Elbow
35	PX6	Quick Connect Female Coupling
36	SC81	Plastic Elbow
37	SC17	Tee Connector-Plastic
38	SC18	Adapter- Stern to Quick fit
39	SC19	Valve 110v Solenoid Shut Off
40	PX5	Quick Coupling Male Brass
41	SC82	Circlip
42	SC75	Filter Recovery Tank
43a	SC5	Pulley, Brush Roller 60mm Ref: 28 XL
44	SC3	Assembly Brush Super Champ
45	TW040056	Sleeving for Handle
46	SC1	Champ Brush Bearing Cover & Assembly
47	SC4	Brush Drive Belt
48	SC6	30mm Motor Drive Pulley
49	SC29	Pump Less Head
50	SC107	Grommet Chassis to Vac. Hose
51	SC7	Roller Bearing Clutch
52	SC33	Main Wheel Axle
53	SC69	Chassis Champ Plus Powr-Flite
54	SC68	Front Lifting Handle
55	X8034	25 Amp Bridge Rectifier
56	SC11	Circuit Breaker zing Ear ZE700B 15 amp
57	SC95	Bulkhead Fitting
58	SC65	Handle for Waste Tank
59	SC112	Clip Black Plastic Coated
60	TW007470	Height Adjusting Knob
61	TW007520	Cable Tie Wrap
63	SC205	Shoulder Screw
64	SC142	Solenoid Spacer
65	X8218	Washer

ref#	order#	description
66	SC8	Switch splash-proof
67	SC25	Wheel 7"
68	SC9	Switch 2 Pole
69	SC104	Air Deflector Champ Plus Powr-Flite
70	SC15	Clear Top Cover Lid Champ Plus
71	SC24	Handle Front Cover
72	SC10	Switch - Spray Rocker
73	SC31	Jet Body- Quick Release
74	SC101	ABS Vacuum Motor Locator
75	SC48	Hose - Vacuum Shoe to Waste Tank
76	SC47	Hose - Vacuum Motor to Solution Tank
77	SC36	Solution Tank. Champ Plus Powr-Flite
78	SC202	Lower Handle Tube
79	SC204	Link
80	SC155	ABS Axle Spacer
81	SC23	Rear Handle Cover
82	PX13	Gasket 125 x 50 x 2mm
83	SC16	Gasket Lid - Champ Mk2
84	SC42	ABS Extruded Spacer Champ Plus
85	SC93	U Locking Spring Assembly s
86	SC58	Link Rod Assembly
87	SC35	Recovery Tank. Champ Plus Powr-Flite
88	SC70	Upper Handle Tube
89	SC43	Knob
90	SC85	Vacuum Head Casting
91	SC22	Pulley Guard
92	TW007656	Plate
93	X8437	Powr-Flite Instruction Label
94	X8436	Powr-Flite Warning Label
95	X8400	Powr-Flite Label Set Side and Front
96	SC96	5mm x 3mm Plain Rubber Washer
97	SC20	8mm Nylon Tube - Red
98	SC140	ABS Spray Jet Retainer Moulding
99	M1400C	Mains Cable Champ Plus Powr-Flite
100	SC57	M20Cable Gland
101	SC56	M20 Cable Gland Nut
102	TW023046	Terminal Block 3 Way
103	TW023055	Cable Strain Relief "P" Clip
104	TW023092	.5mm Earth Ring
105	1928	Motor Vac 3 Stage 110v
106	SC30	Bypass Pump Head
107	TW033063	Hose Clip
108	SC114	M14 Plain Brass Washer
109	SC245	Cable Inlet Gland
110	PX42	13mm x 18mm O-Clip
112	SC110	Adjusting Rod Assembly
113	SC200	Drain Hose Assembly w/ PX5
116	PX46	M50 Nut with integral Collar
117	TW065013	M50 Washer
118	PX14	Neoprene Gasket
119	PX10	Gate Valve
120	PX11	Elbow
121	TW007178	Carbon Brush (Pump Motor)
122	TW065088	Carbon Brush (Vac Motor 105)
123	TW065051	Carbon Brush Interrupter (Vac Motor 105)

* call for price and availability