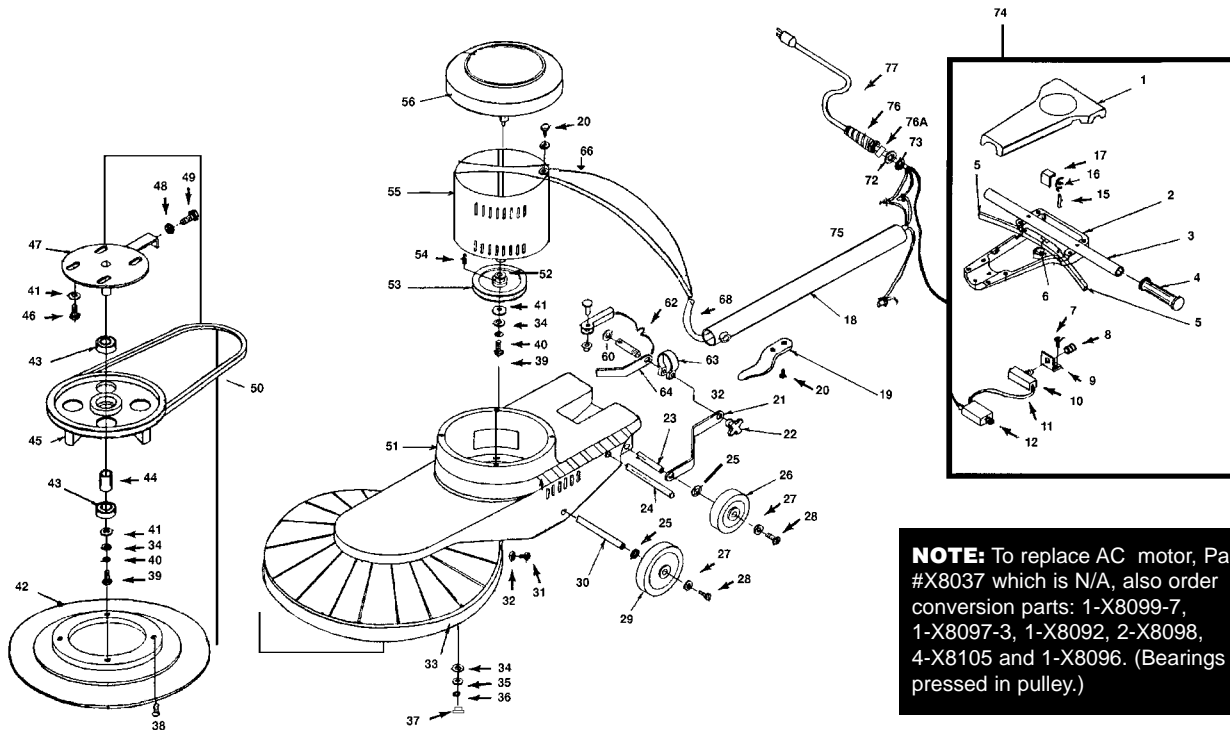


BURNISHERS

Parts for P1000, P1200 and P2000



NOTE: To replace AC motor, Part #X8037 which is N/A, also order conversion parts: 1-X8099-7, 1-X8097-3, 1-X8092, 2-X8098, 4-X8105 and 1-X8096. (Bearings are pressed in pulley.)

ref#	order	description
1	X8001	handle cover (front)
2	X8002	handle cover (back)
3	X8005	cross bar handle
4	X8007	handle grip
5	X8003	switch lever
6	X8004	lock out ball
7	X8201	8-32 X 3/8" type "F" screw
8	X8010	switch spring
9	X8006	switch bracket
10	F5P	switch (25 amp)
11	X8009	4" jumper wire
12	X8023	15 amp circuit breaker (P1000, P1200)
15	X8026	Dowell pin
16	X8110	Dowell pin spring
17	X8061	clip, switch lever
18	X8011B	handle tube with inserts
	X8011	handle tube (P2000) without inserts
19	X8013	cord hook
20	X8207	10-24 x 1/2" type "F" phil screw
21	X8027L	handle brace (left)
22	X8016	knob
23	X8029	rear axle
24	X8018	pivot shaft
25	X8101	spring washer
26	X8025	4" wheel
27	X8020	axle washer
28	X8210	1/4 - 20 x 1/2" phil flat head screw
29	X8024	5" wheel
30	X8095	axle (main wheels)
31	X8208	10-24 x 5/8" phil pan head screw
32	X8225	3/16" flat washer
33	X8030	46" bumper
34	X8219	3/8" SAE flat washer
35	X8218	5/16" SAE flat washer
36	X8212	1/4" lock washer
37	X8211	1/4-20 x 1 hex cap bolt
*38	X8216	5/16-18 x 1-1/2" flat phil (pad holder)
39	X8215	5/16-18 x 3/4" hex cap bolt
40	X8217	5/16" split lock washer
41	X8230	3/8" wrought washer
42	X8862	flexible pad driver
43	X8098	bearing
44	X8092	bearing spacer
45	X8096	main pulley
46	X8223	3/8-16 x 3/4" hex end cap screw
47	X8091	shaft & plate weldment
48	X8231	5/16-18 hex nut
49	X8227	5/16-18 x 1-1/4" hex tap bolt
50	X8099	43" vee belt (P1200)
	X8099-2	41" vee belt (P1600)

ref#	order	description
	X8099-4	42" belt for P2000 with Type B pulley
	X8099-5	40.5" belt for P1000, P1600 with Type B pulley
	X8099-7	39.5" belt for P1200 with Type B pulley
51	X8050	base housing
52	X8170	3/4" USS washer, plated
53	X8097-1	pulley for P2000
	X8097-2	pulley for P1000, P1600
	X8097-3	pulley for P1200
54	X8047	machine key
55	X8037-1	1-1/2 H.P., 115V, rectified D.C. motor
	X8078	1 H.P., 115V, rectified D.C. motor (P1000 only)
56	X8041	motor cover
60	X8028	1/2" hardened washer
62	X8012A	handle clamp assembly
63	X8012	handle clamp, collar, 1-1/2"
64	X8027R	handle brace (right)
66	X8021	12" ground wire
67	X8150	cable tie
68	X8022B	line cord
69	X8202	8-32 x 1/2" phil pan bolt
70	X8150M	cable tie mount
71	X8256	8-32 keep nut
72	X8228	11/16 I.D. flat washer
73	X8100	counter nut
74	X8600	switch housing, complete with switch and circuit breaker comes with X8023A for P100-1500
75	X8062W	counter weight (P2000)
76	SR37	strain relief, metal
76A	SR37A	brass sleeve, strain relief
77	M1400	14/3, SJTWA 75' cord
	M1400S	cord with strain relief
	M1407	12/3, SJWA, 75' cord (P2000)
	M1407FS	12/3, SJWA, 75' cord w/metal relief
NOT ILLUSTRATED		
	X8062W	handle weight, P2000
	X8213	nut for X8210-1
	X8222	1/4" x 20 x 3/4" socket set screw for X8011 handle
	X8038	60 MFD capacitor AC motor only
	X8039	340 MFD capacitor AC motor only
	X8512	carbon brush, for P1000, P1200 and P1600
	F45P	pad holder center grip
	X8108	wheel spacer
	X8034-2	50 amp, 60 cycle rectifier
	X8180	bottom bearing P1600, P2000
	X8535	upper motor bearing
	X8210-1	screw & nut
	X8220	#14 x 1/2" phil flat head