

Self-Contained Carpet Extractors

OPERATORS MANUAL AND PARTS LIST

Model PFX3S, PFX7S, and PFX9S



READ ALL INSTRUCTIONS BEFORE USING!

Congratulations on purchasing a Powr-Flite self-contained extractor. Given proper care, this product will afford you many years of trouble-free operation. All parts have passed rigid quality control standards before being assembled to produce the finished product.

Prior to packaging, the extractor is again inspected for assurance of flawless assembly. This unit is protectively packed to prevent damage in shipment. We recommend removal and inspection of unit upon delivery for possible damage in transit. Only a visual examination will reveal damage that may have occurred.

If damage is discovered, immediately notify the transportation company that delivered your extractor. As a shipper, we are unable to report claims for concealed damage. You must originate any claim within 5 days of delivery.

This manual is for your protection and information.

PLEASE READ CAREFULLY since failure to follow precautions could result in discomfort or injury. When using electrical equipment, basic safety precautions should always be followed.

TABLE OF CONTENTS

<i>INTRODUCTION</i>	2
<i>SAFETY PRECAUTIONS (English)</i>	3
<i>SAFETY PRECAUTIONS (Spanish) (French)</i>	4
<i>GROUNDING INSTRUCTIONS</i>	5
<i>GENERAL INSTRUCTIONS</i>	6,7
<i>Machine Components</i>	6
<i>Machine Operation</i>	6
<i>Pre-operation Checks</i>	6
<i>Cleaning Procedure (accessories)</i>	7
<i>Storage</i>	7
<i>Routine Care & Maintenance</i>	7
<i>ILLUSTRATED PARTS LIST</i>	8-15
<i>MAINTENANCE GUIDE</i>	16

CARE OF THIS SELF-CONTAINED EXTRACTOR

Treat this unit as you would any other high grade precision made product. Dropping, unreasonable bumping across thresholds and other misuses may result in a damaged unit which will not be covered by warranty. When not in use, power cord should be wrapped around handle for storage.

Read this manual completely before operating this extractor. It is important to follow instructions in this manual to prevent the possibility of injury or damage to the user and/or machine.

IMPORTANT SAFETY PRECAUTIONS

WARNING!: To reduce the risk of fire, electric shock, or injury

WARNING
To avoid fire, DO NOT use with a flammable or combustible liquid to clean floor.



WARNING
To avoid electric shock, DO NOT expose to rain. Store Indoors.

When using this self contained extractor, basic precautions should always be followed, including the following:

- 1) DO NOT leave unit when plugged in. Unplug from outlet when not in use and before servicing.
- 2) DO NOT allow unit to be used as a toy. Close attention is necessary when used around or near children.
- 3) Use only as described in this manual. Use only manufacturer's recommended attachments.
- 4) DO NOT use with damaged cord or plug. If unit is not working properly because it has been dropped, dropped into water, left outdoors, or damaged in any way, contact a service center of Powr-Flite®.
- 5) DO NOT pull or carry by cord, use cord as a handle, close door on cord, or pull cord around sharp edges or corners. DO NOT run unit over cord. Keep cord away from heated surfaces.
- 6) DO NOT unplug by pulling on cord. To unplug, grasp the plug, not the cord.
- 7) DO NOT handle plug or appliance with wet hands.
- 8) DO NOT put any objects into openings. DO NOT use with any opening blocked: keep free of dust, lint, hair, or anything that may reduce air flow.
- 9) Keep hair, loose clothing, fingers, and all parts of body away from openings and moving parts.
- 10) DO NOT pick up anything that is smoking or burning such as cigarettes, matches, or hot ashes.
- 11) DO NOT use to pick up hazardous chemicals.
- 12) Turn off all controls before unplugging.
- 13) Turn unit off immediately if foam or liquid comes from machine exhaust. Empty & clean out recovery (dirty) tank and use defoamer to correct the problem.
- 14) DO NOT use to pick up flammable or combustible liquids such as gasoline or use in areas where they may be present.
- 15) DO NOT use where oxygen or anesthetics are used.
- 16) DO NOT use an extension cord unless absolutely necessary. If an extension cord is used, then wire size must be #14 or larger and should not exceed 25 ft. in length. Extension cord must be a three-wire type to insure grounding protection.
- 17) Replace damaged or worn parts immediately with genuine original equipment parts to maintain safety.
- 18) This unit must be connected to a properly grounded outlet only. See grounding instruction.

MEDIDAS DE SEGURIDAD

PELIGRO!: Para reducir el riesgo de incendio, descarga eléctrica o daño:

NO SE esponga a la lluvia a guarde bajo techo. Una sacudida eléctrica puede suceder si se usa en superficies húmedas.



NO utilice la unidad para levantar líquidos inflamables o combustibles como gasolina.

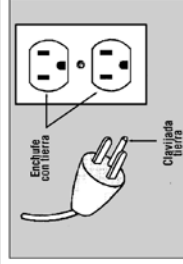
PARA SU SEGURIDAD

- 1) **NO DEJE** la aspiradora enchufada. Desconéctala cuando no la use y antes de darle servicio.
- 2) **NO PERMITE** que se use como juguete. Ponga atención cuando se use cerca de niños.
- 3) **USE SE SOLAMENTE** de acuerdo a las instrucciones y con accesorios recomendados por el fabricante.
- 4) **NO USE** con el cable o clavija dañados. Si la unidad ha sido golpeada, mojada, o dañada en algún modo llame al centro de servicio o Power-Fix[].
- 5) **NO JALE** o carque del cable, no machuque el cable o lo estire sobre objetos filosos. **NO USE** la unidad sobre el cable.
- 6) **NO DESENCHUFE** jalando el cable. Para hacerlo jale de la clavija no del cable.
- 7) **NO TOME** la clavija o el aparato con las manos mojadas.
- 8) **NO TAPE** objetos en las ventillas. **NO USE** si alguna está tapada. Mantenga limpia de polvo, pelusa o cualquier obstrucción.
- 9) Mantenga el pelo, ropa suelta manos y partes del cuerpo lejos de las aberturas y partes móviles.
- 10) **NUNCA** aspire objetos que mandose o humeando como cigarras, cerillos o cenizas calientes.
- 11) No use unidad a recoje materiales peligrosas.
- 12) Apague todos los controles antes de desconectar.
- 13) Paga las unidad inmediatamente si hay espuma o líquidos saliendo da bajo de la unidad. Si esto para limpia el tanqué y también usa un chermico de espuma.
- 14) **NO UTILIZE** la unidad para levantar líquidos inflamables o combustibles como gasolina; o use en areas donde se encuentren estos líquidos.
- 15) Reemplacen los partes gastadas o dañadas inmediatamente para mantener la seguridad.
- 16) Esta unidad debe ser conectada a un enchufe correctamente aterrazado solamente. Vea los instrucciones de tierra. Si su aspiradora/soplador tiene un enchufe para una boquilla de potencia, apaguela siempre antes de conectar o desconectar la goquilla.
- 17) **NO USE** donde oxígeno o anestésicos sean empleados.
- 18) **NO USE** extensión eléctrica mas que cuando sea absolutamente necesario. Si usa extensión, el cable debe de ser calibre #14 o mayor y no debe exceder 50 pies de longitud. El cable extensión debe ser de 3 polos para asegurar protection de tierra.

INSTRUCCIONES DE TIERRA

¡PELIGRO!

Una conexión incorrecta de tierra puede resultar en una descarga eléctrica. Consulte con un electricista calificado o persona de servicio si tiene duda acerca del enchufe y su tierra. No modifique el enchufe de las unidad. Si no encaja en el enchufe, haga instalar un enchufe apropiado por un electricista calificado.



IMPORTANTES MEDIDAS DE SEGURIDAD

AVERTISSEMENT!: Pour réduire les risques d'incendie, de choc électrique ou de blessure:

NE PAS aspirer de matières humides. Ne pas exposer à l'intérieur.



NE PAS utiliser l'appareil avec des liquides inflammables en aspirant afin d'éviter du feu.

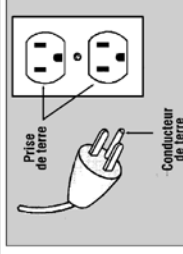
POUR VOTRE SÉCURITÉ

- 1) **NE PAS** laisser l'appareil sans surveillance lorsqu'il est branché. Débrancher lorsque l'appareil n'est pas utilisé et avant l'entretien.
- 2) **NE PAS** permettre aux enfants de jouer avec l'appareil. Une attention particulière est nécessaire lorsque l'appareil est utilisé par des enfants ou à proximité de ces derniers.
- 3) N'utiliser que conformément à cette notice avec les accessoires recommandés par le fabricant.
- 4) **NE PAS** utiliser si le cordon ou la fiche est endommagé. Retourner l'appareil à un atelier de réparation s'il ne fonctionne pas bien, s'il est tombé ou s'il a été endommagé, oublié à l'extérieur ou immergé.
- 5) **NE PAS** tirer, soulever ou trainer l'appareil par le cordon. **NE PAS** utiliser le cordon comme une poignée, le coincer dans l'embrasure d'une porte ou l'appuyer contre des arêtes vives ou des coins. **NE PAS** faire rouler l'appareil sur le cordon. Garder le cordon à l'écart des surfaces chaudes.
- 6) **NE PAS** débrancher en tirant sur le cordon. Tirer plutôt la fiche.
- 7) **NE PAS** toucher la fiche ou l'appareil lorsque vos mains sont humides.
- 8) **NE PAS** utiliser des rallonges ou des prises qui n'ont pas de capacité suffisante pour transporter le courant.
- 9) **NE PAS** utiliser où l'oxygène ou les gazes sont utilisés.
- 10) **N'INSÉRER** aucun objet dans les ouvertures. **NE PAS** utiliser l'appareil lorsqu'une ouverture est bloquée. S'assurer que de la poussière, de la peluche, des cheveux ou d'autres matières ne réduisent pas le débit d'air.
- 11) Maintenir les cheveux, les vêtements amples, le doigts et toutes les parties du corps à l'écart des ouvertures et des pièces chaudes.
- 12) **NE PAS** aspirer, de matières en combustion ou qui dégagent de la fumée, comme des cigarettes, des allumettes ou des cendres chaudes.
- 13) **NE PAS** utiliser l'aspirateur pour soulever les produits chimiques dangereux.
- 14) Mettre toutes les commandes à la position ARRÊT avant de débrancher l'appareil.
- 15) Couper le courant immédiatement si le liquide de nettoyage sort de l'appareil. Videz et nettoyez le réservoir interrim et admettez le liquide de pulvé écumé.
- 16) **NE PAS** aspirer des liquides inflammables ou combustibles, comme de l'essence, et ne pas faire fonctionner dans des endroits où peuvent se trouver de tels liquides.
- 17) Remplacez taré parties vite à maintenir sécurité.
- 18) Ne brancher qu'à une prise de courant avec mise à la terre. Voir les instructions visant la mise à la terre.

INSTRUCTIONS VISANT LA MISE À LA TERRE

AVERTISSEMENT!

Un conducteur de terre mal raccordé peut entraîner un risque de choc électrique. Consulter un électricien ou un technicien d'entretien qualifié si vous n'êtes pas certain que la prise soit correctement mise à lat terre. Ne pas modifier la fiche fournie avec l'appareil-se elle ne peut être insérée dans la prise, faire installer une prise adéquate par un electricien qualifié.



GROUNDING INSTRUCTIONS

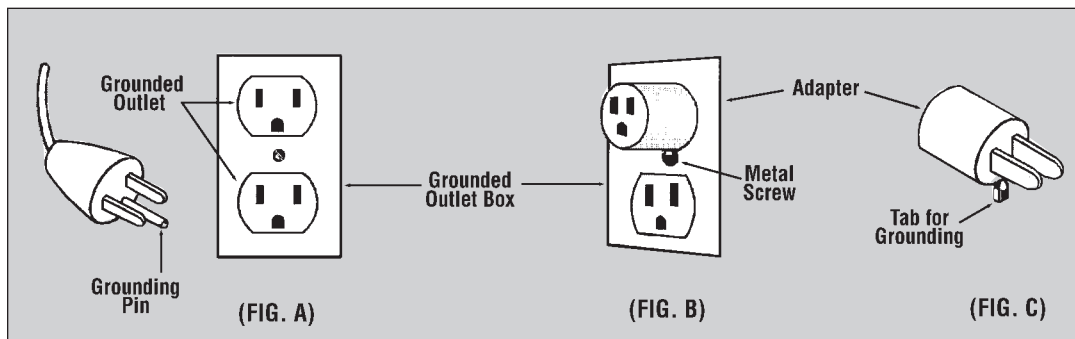
DANGER: Improper use of the grounding plug can result in a risk of electric shock.

GROUNDING INSTRUCTIONS

This self-contained extractor must be properly grounded. If it should malfunction or breakdown, grounding provides a path of least resistance for electrical current to reduce the risk of electric shock. This machine is equipped with a cord having an equipment-grounding conductor and grounding plug. The plug must be inserted into an appropriate outlet that is prop-

erly installed and grounded in accordance with all local codes and ordinances. If repair or replacement of the cord or plug is necessary, **DO NOT** connect the grounding wire to either flat blade terminal. The wire with insulation having an outer surface that is green with or without stripes is the grounding wire.

GROUNDING METHODS



This unit is for use on a nominal 120 volt circuit, and has a grounded plug that looks like the plug illustrated in **(Fig. A)**. A temporary adapter that looks like the adapter illustrated in **(Fig. B&C)** may be used to connect the plug to a 2-pole receptacle as shown in **(Fig. B)** if a properly grounded outlet is not available.

The temporary adapter should be used only until a properly grounded outlet **(Fig. A)** can be installed by a qualified electrician. The green color rigid ear, lug, or the like extending from the adapter must be connected to a permanent ground such as a properly grounded outlet box cover. Whenever the adapter is used, it must be held in place by a metal screw.

NOTE: In Canada, the use of a temporary adapter is not permitted by the Canadian Electrical Code.

WARNING!

Improper connection of the equipment-grounding conductor can result in a risk of electric shock. Check with a qualified electrician or service person if you are in doubt as to whether the outlet is properly grounded.

DO NOT modify the plug provided with the appliance. If it will not fit the outlet, have a proper outlet installed by a qualified electrician.

GENERAL INSTRUCTIONS

PRE-OPERATION INSTRUCTIONS for PFX3S

FIG. 1C

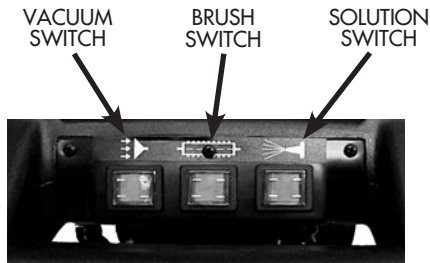


FIG. 1A

NOTE - FOR COLOR FASTNESS: Before using carpet cleaning chemicals, test on an inconspicuous part of the carpet for color fastness. Place the solution on a small piece of clean white cloth or tissue. Rub the carpet area vigorously with the cleaning chemical. Excessive amounts of dye showing on the material would indicate that the colors are not colorfast, and should not be wet cleaned.

- 1) Prepare room for cleaning, moving furniture as need to provide a clear working area. Cover bottoms of furniture legs where possible. (Aluminum foil or foam blocks are ideal for this purpose.) Pin up curtains and drapes.
- 2) Gather cleaning supplies: a clean, suitable sized bucket, carpet cleaning solution, such as Powr-Flite's Kold-Powr, defoamer solution such as Powr-Flite's Powr-Defoamer, and pretreat solutions for heavily soiled traffic areas such as Powr-Flite's Fast Lane.
- 3) Disconnect vacuum hose from recovery tank and lift the RECOVERY TANK off of the SOLUTION TANK.
- 4) Measure carpet cleaning solution, per manufacturers recommended ratio, into the SOLUTION TANK and fill with hot water. DO NOT use the RECOVERY TANK to fill the SOLUTION TANK. Debris remaining in the tank could damage the pump or block the jet. **WARNING: DO NOT exceed water temperature of 150° (65° C).**
- 5) Replace RECOVERY TANK on machine. Add defoamer solution, per manufacturer's instructions as needed, in RECOVERY TANK.
- 6) Replace the transparent cover on the RECOVERY TANK and connect the vacuum hose to the front of the RECOVERY TANK.
- 7) Pre-treat heavily soiled carpet areas as required.

OPERATION OF SELF-CONTAINED CARPET CLEANER

- 1) Plug the power cord into an outlet. **WARNING:** This machine must be properly grounded. See Grounding Instructions on page 4 for additional information.
- 2) Press the VACUUM switch "on" and the BRUSH switch to the "right" position. See FIG C for a diagram on operational switches.
- 3) To clean the carpet, squeeze and hold the SOLUTION LEVER (FIG A) to apply the cleaning solution, pulling the machine backwards at the same time. Stop spraying the solution approximately 12 inches (30 cm) before the end of your pass, so that the extractor will vacuum up all of the solution. Slightly overlap the next cleaning pass to prevent streaking. To avoid overwetting, it is recommended that a maximum of only two wet passes (spraying solution) be done. One dry pass without spraying solution will also aid in drying time. After a few passes, check the RECOVERY TANK to verify that no foam is present. Add extra defoamer if necessary.
- 4) Empty the RECOVERY TANK when it is approximately 3/4 full. Do not refill the SOLUTION TANK without emptying all of the contents of the RECOVERY TANK first.

GENERAL INSTRUCTIONS

STORAGE

WHEN CLEANING IS FINISHED:

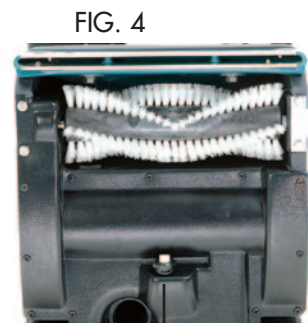
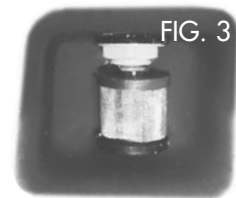
- 1) Disconnect the SOLUTION HOSE on the front of the machine by pushing in on the ring of the solution fitting.
- 2) Connect the drain hose (clipped to the back) to the SOLUTION HOSE fitting and place the other end into the RECOVERY TANK. Press the SOLUTION switch to the "right" position. This will activate the motor to pump any remaining solution into the RECOVERY TANK for easy drainage.
- 3) When all of the solution is pumped from the SOLUTION TANK, turn the SOLUTION switch off, remove the power plug from the outlet and empty the RECOVERY TANK. Leave the RECOVERY TANK open when storing.
- 4) Disconnect the DRAIN HOSE by pushing in on the ring of the SOLUTION HOSE fitting. Replace the DRAIN HOSE in the clip on the back of the machine, and re-connect the SOLUTION HOSE.



ROUTINE MAINTENANCE INSTRUCTIONS

DAILY / INTERVAL

- 1) The filter in the solution tank (FIG 3) should be kept clean. It can be removed if necessary. A damaged filter should be replaced, otherwise blockages and/or damage to the pump head and spray jet can occur.
- 2) Check the spray jet (FIG 4) for blockage and a uniform spray pattern. Remove jet and blow through to clean. Do not use a pin or other sharp objects as this may cause damage to the jet.
- 3) Check and remove any debris or lint build-up from the vacuum head, brush, and brush housing.
- 4) Always wash out the tanks with clean water after use. To do this, pour clean water into the solution tank and spray through spray tip to clear chemical residue from the pump, lines, and spray tip. Allow the vacuum to run for a few minutes after use to aid the machine in drying out and to help prevent bacteria and odors.
- 5) Wash out mesh filter in RECOVERY TANK of dirt and carpet fibers after dumping waste from recovery tank. Failure to clean filter may cause damage to vacuum motor.



WEEKLY

- 1) Inspect hoses (unseen blockages sometimes occur), hose cuffs, and the rubber seal on the recovery tank lid. The main cable, plug, and switches should also be examined for damage.

SOLUTION SPRAY JET

NOTE: It is advisable to store the unit with the recovery tank lid removed.

CAUTION: THIS UNIT MUST BE PROTECTED FROM FREEZING. Damage from freezing could cause machine to malfunction.

GENERAL INSTRUCTIONS

PRE-OPERATION INSTRUCTIONS for PFX7S and PFX9S

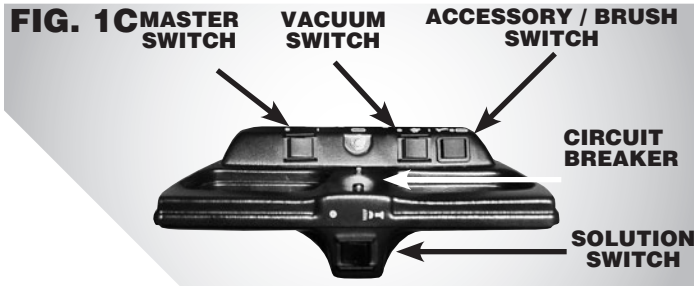


FIG. 1A
PFX7S shown

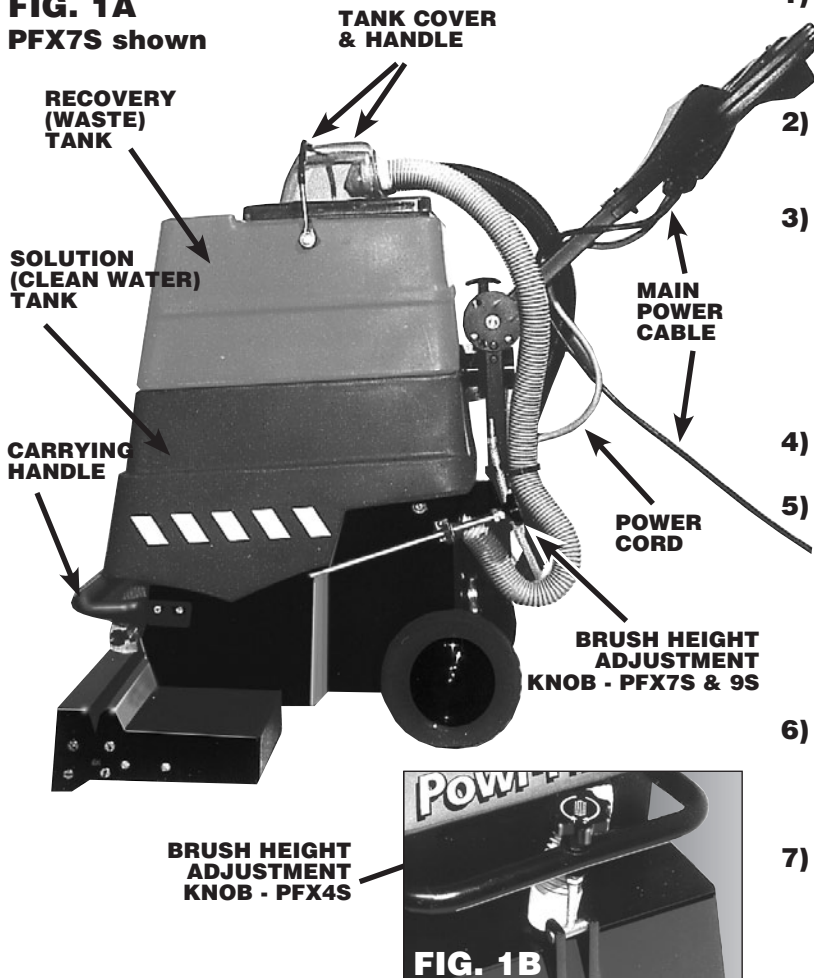


FIG. 1B

NOTE: (color fastness) Before using carpet cleaning chemicals, test on an inconspicuous part of the carpet for color fastness. Place the solution on a small piece of clean white material or tissue, then rub the carpet vigorously. Excessive amounts of dye showing on the material would indicate that the colors are not fast, and should not be wet cleaned.

- 1) Move the furniture around to give a clear working area. Cover bottoms of furniture legs where possible. (aluminum foil or foam blocks are ideal) Pin up curtains and drapes.
- 2) Have a suitable size clean bucket available for filling the solution tank with warm water. **CAUTION:** - Do not add the cleaning agent at this stage
- 3) Adjust the machine brush operating depth with the knob on the back of models PFX 7S & 9S (**FIG. 1A**) and the front of PFX4S (**FIG. 1B**) to suit the carpet height. **NOTE:** The raised counter clockwise position of the knob should be used when the machine is being stored. **NOTE:** Excess brush contact may overload motor circuit breaker or reduce wet extraction quality.
- 4) Remove the transparent cover and remove the recovery tank below cover. (**FIG. 1A**)
- 5) Measure carpet cleaning solution such as Powr-Flite's Kold-Powr® per manufacturers recommended ratio into the clean water tank and fill with hot water from a very clean bucket. DO NOT use the waste tank to fill the solution tank as debris could damage the pump or block the jet. **WARNING:** DO NOT exceed 150° (65° C)
- 6) Replace recovery (dirty water) tank above solution tank. (**FIG. 1A**) Add defoamer solution per manufacturer's instructions as needed. 2 oz. Powr-Flite Powr-Defoamer®
- 7) Replace the transparent cover. Pull back handle to lock cover into place. (**FIG. 1A**) Treat heavily soiled areas by using traffic lane cleaner such as Powr-Flite's Fast Lane®.

OPERATION OF SELF-CONTAINED CARPET CLEANER

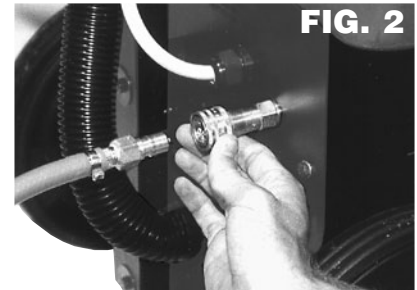
- 1) Plug main power cable (**FIG. 1A**) into outlet. **WARNING: This machine must be properly grounded.** See grounding instructions.
- 2) Press the master switch to the on position. Then press the vacuum switch on and the accessory/brush switch to the right. (**FIG. 1C**)
- 3) Press and hold the solution switch (**FIG. 1C**) to apply the cleaning solution. Pull the machine backwards at the same time to clean the carpet. Stop the solution spray about 12" (30cm) before the end so all of the solution is vacuumed up. Slightly overlap the next cleaning pass to prevent streaking. A two (2) wet pass maximum is recommended to avoid overwetting and one dry pass without solution spray will aid in drying time. After a few passes, check the waste tank to see that no foam is present. Add extra defoamer if necessary.
- 4) Make sure to empty the recovery (top) tank (**FIG. 1A**) when it is approximately 3/4 full. Do not refill the solution tank without emptying all the contents of the recovery tank first.

GENERAL INSTRUCTIONS

STORAGE

WHEN CLEANING IS FINISHED:

- 1) Connect the drain hose (clipped to the handle) to the solution fitting at the back of the machine and place the other end into the waste tank, turn on the accessory switch. **(FIG 1C)** This will pump the remaining solution into the waste tank for easy drainage.
- 2) To disconnect the solution hose, push in on the ring of the solution fitting. **(FIG 2)** Switch off the machine, remove power plug from the socket, and empty the waste tank. Leave waste tank open when storing.
- 3) Raise the brush to storage position.



ACCESSORIES / TOOLS (OPTIONAL)

For upholstery cleaning and inaccessible areas. Remove the white cuff from the transparent cover **(FIG 1A)** and connect the accessory vacuum hose in its place. Connect the accessory solution hose to the solution fitting at the back of the machine by pushing back the locking ring to fit. **(FIG 2)** Then press vacuum switch & press the accessory/brush switch to the left **(FIG 1C)** and the wand or upholstery tool can now be used.

ROUTINE MAINTENANCE INSTRUCTIONS

DAILY / INTERVAL

- 1) The filter in the solution tank **(FIG 3)** should be kept clean. It can be removed if necessary. A damaged filter should be replaced otherwise blockages and/or damage to the pump head and spray jet can occur.
- 2) Check the spray jet **(FIG 4)** for blockage and a uniform spray pattern. Remove jet and blow through to clean. Do not use a pin as this may cause damage to the jet.
- 3) Check and remove any debris or lint build-up from the vacuum head, brush, and brush housing.
- 4) Always wash out the tanks with clean water after use. To do this, pour clean water into the solution tank and spray through spray tip to clear chemical residue from the pump, lines, and spray tip. Allow the vacuum to run for a few minutes after use to aid the machine in drying out and to help prevent bacteria and odors.

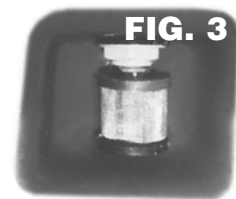
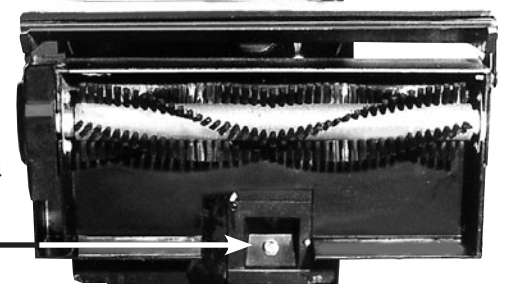


FIG. 4

**SOLUTION
SPRAY
JET**



WEEKLY

- 1) Inspect hoses (unseen blockages sometimes occur), hose cuffs, and the rubber seal on the recovery tank lid. The main cable, plug, and switches should also be examined for damage.

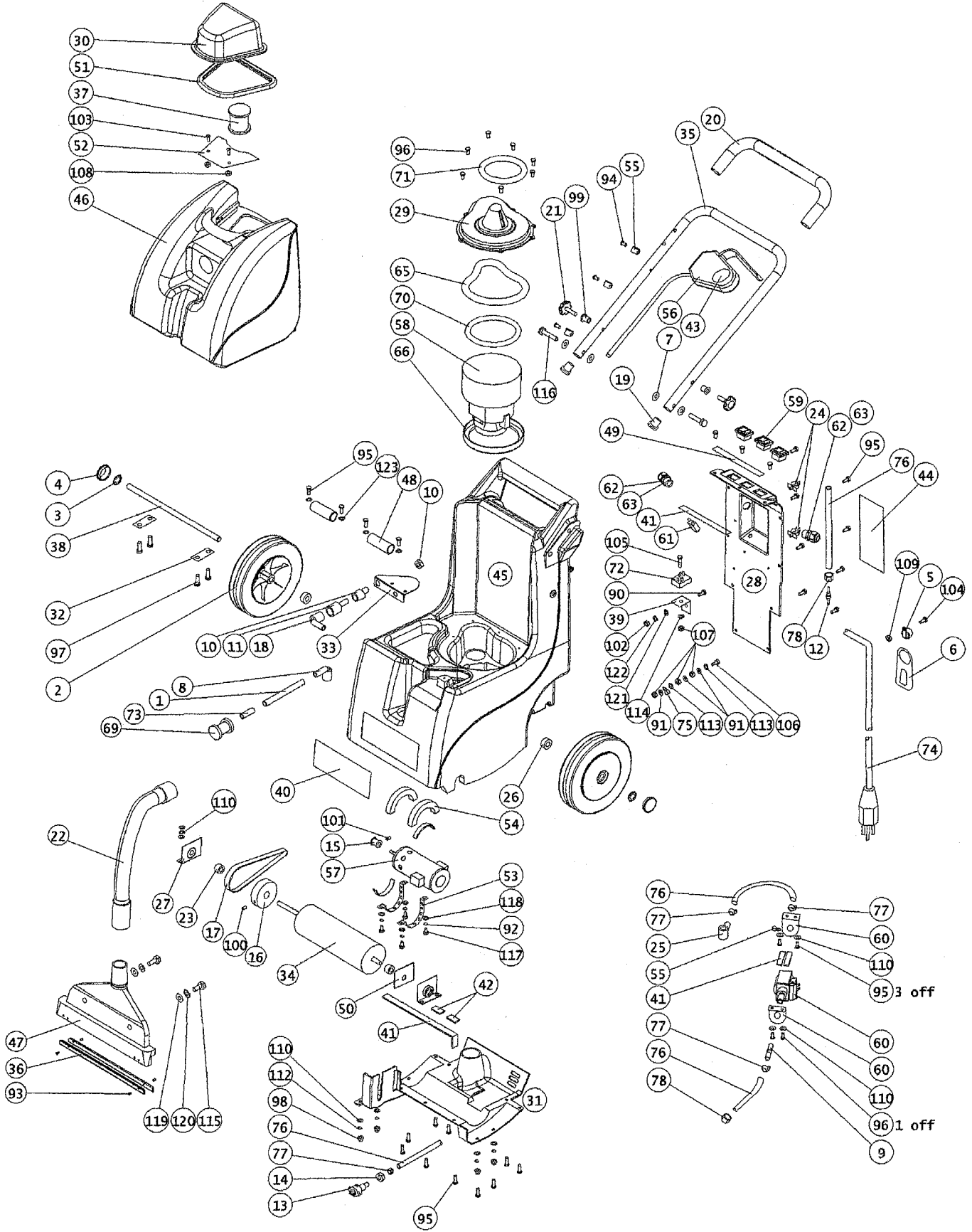
NOTE: It is advisable to store the unit with the recovery tank lid removed.

CAUTION: THIS UNIT MUST BE PROTECTED FROM FREEZING. Damage from freezing could cause machine to malfunction.

SELF-CONTAINED EXTRACTOR PFX3S PARTS

ref #	order #	description	ref #	order #	description
1	2-265	Silicon hose	56	SC324	Handle Switch
2	2-3121	Wheel with Cap (Complete)	57	SC325	BrushMotor (110 volt Version)
3	2-3122	Starlock washer	58	SC326	Vac Motor (110 volt Version)
4	2-3124	Wheel Cap (Spares Only)	59	SC327	Switch with cover
5	2-315 I	P clip cable restraint	60	SC328	Solenoid Pump (110 volt Version)
6	SC301	Cable restraint	61	SC329	Cut Out (110 volt Version)
7	2-3417	Nylon Washer	62	4-3212	Cable gland
8	SC302	1/4" Elbow Barb Black (P B.)	63	4-3213	Cable gland back nut
9	2-3443	1/8" male barb	65	SC330	Motor cover seal (egg)
10	SC303	Bulkhd coupling Metal	66	RX000119	Vac Motor lip seal
11	SC304	Female coupling Metal	69	SC333	Filter Element
12	SC305	drain hose conn. Male	70	SC337	Vac seal bottom
13	SC306	Spray Nozzle	71	SC331	Vac seal top
14	SC307	Spray Nozzle Retaining nut	72	SC332	Rectifier (brush Motor)
15	SC308	Motor Pulley	73	TW011120	red nylon tube
16	SC334	Brush Pulley	74	Tw020216-	Powr-Flite Cordset
17	SC309	Brush Drive Belt	75	TW023055	P-clip (internal)
18	SC310	1/4" BSPT Metal Elbow Male	76	TW065064	6 mm bore hose
19	2-3457	Tube End Cap	77	TW033069	Jubilee clip
20	SC336	Handle Grip	78	TW065063	O-Clip Steel
21	SC311	Handle lock knob	90	2-3032	Nylon Screw
22	SC312	Vac pick-up hose	91	M5-R-ZN	M5 Shakeproof Washers for Bondin
23	SC313	Nylon Brush Spacer 5~3/ 3	92	M6-P-SS	M6 Spring Washers Stainless
24	2-3478	Purnp Out Hose Clips	93	2-3463	Stainless Rivets
25	2-3486	1/4" BSPT Grey Elbow Male	94	2-3464	Screw for p clip
26	3-5589	Wheel spacer	95	2-3465	Roto small tapper
27	SC314	Bearing Housing	96	2-3466	Roto intermediate tapper
28	SC315	Back Electrical Cover	g7	2-3467	Roto large tapper
29	SC316	Vac motor cover	98	2-3479	Housing Domenut
30	SC317	Vac Lid	99	2-3484	M6 Handle Insert
31	SC318	Bottom cover	100	M4-10-XB	Brush Pulley Grub screw
32	3-5991	Axle retain brackets	101	M4-3-XB	Motor Pulley Grub screw
33	3-5992	Fluid Coupling Bracket	102	M4-I-ZN	Nut for Nylon screw
34	SC319	Brush Body	103	M5-16-BP-SS	Deflector plate bolt -csk
35	SC320	Handle	104	M5-16-CP-ZN	Cable restraint bolt
36	3-5998	Pick up Strip	105	M5-20-CP-ZN	Rectifier bolt
37	SC335	Filter element-waste tank	106	M5-25-CP-ZN	Earth Bonding Screw
38	3-6000	Axle	107	M5-I-ZN	Rectifier nut
39	3-6001	Rectifier heat sink	108	M5-LN-SS	Deflector plate nut
40	TW091052	Powr-Flite Label	109	M5-I-ZN	Cable restraint nut
41	3-6009	Gasket Strip (Bck + bot cvrs + Pum-	110	M5-OLG-SS	Housing washer
42	3-6010	Gasket bot 10 mm pads	111	M5-OLG-ZN	Rectifier washer
43	3-6011	Champ Compact Sprayjet Label	112	M5-P-SS	Housing spring washer
44	3-6012	Champ Compact Pictorial Label	113	M5-OHG-ZN	Earth Bonding Screw Washers
45	3-6013	Solution Tank	114	M5-P-ZN	Rectifier spring washer
46	SC321	Kecovery Tank	115	M8-16-E-SS	Pick-Up Bolt
47	3-6015/PO	Pick-up	116	SC338	Handle Pivot Bolt
48	3-6034	Silicone Tube Tank Spacer	117	M6-12-E-SS	M6 Motor Mounting Screws
49	3-6018	Switch Label	118	M6-OLG-SS	M6 Motor Mounting Washers
50	SC322	Bearing protector seal	119	M8-OHG-SS	M8 Pick-Up Mounting Washers
51	SC323	Vac Lid Seal	120	2-3250	M8 Shakeproof Washer for Pick-Up
52	3-6021	Water path deflector plate	121	M4-OLG-ZN	M4 Rectifier Washer
53	3-6031	Brush Motor Clamp Strip	122	M4-P-ZN	M4 Rectifier Spring Washer
54	3-6033	Motor Spacer	123	2-3485	M5 Black Plastic Washer
55	4-286	P clip			

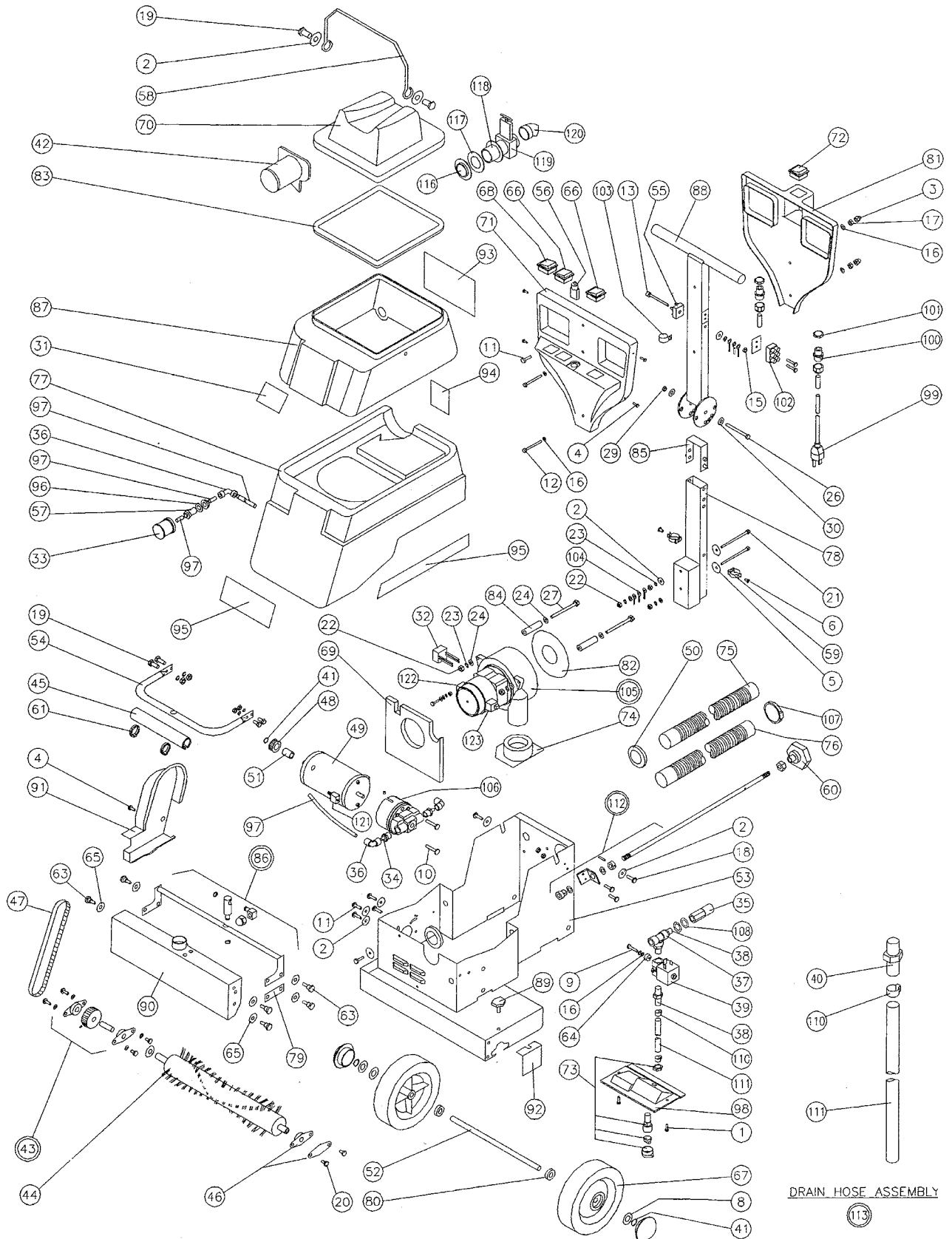
SELF-CONTAINED EXTRACTOR PFX3S PARTS



SELF-CONTAINED EXTRACTOR PFX7S PARTS

ref #	order #	description	ref #	order #	description
1	2-218	No.6 x 112" ST Screw	63	TW065004	Shoulder Screw
2	2-3395	5mm x 20mm Washer	64	TW007389	Solenoid Spacer
3	2-3396	M5 Dome Nut Black	65	2-3395	Washer
4	2-3397	No 6 x 318 Pan Pozi Black	66	SC8	Switch splash-proof
5	2-3399	M6 x 30 Washer Black	67	SC25	Wheel 7"
6	2-3405	1/8 x 8mm Pop Rivet	68	SC9	Switch 2 Pole
8	M12-LG-ZN	M12 Plain Washer	69	TW017409	Air Deflector Champ Plus Powr-Flite
9	M4-16-CP-ZN	M4 x 16 Pozi Pan Screw	70	SC15	Clear Top Cover Lid Champ Plus
10	SC87	M4 x 20 Pozi Screw	71	TW007412	Handle Front Cover
11	SC55	M5 x 10 Pozi Pan Screw	72	SC10	Switch - Spray Rocker
12	M5-E-BK	M5 x 40 Hex Screw Black	73	SC31	Jet Body- Quick Release
13	M5-70-A-ZN	M5 x 70 Socket Cap Screw	74	TW007428	ABS Vacuum Motor Locator
14	SC80	M5x8Pan Screw	75	SC48	Hose - Vacuum Shoe to Waste Tank
15	M5-I-BK	M5 Full Nut Black	76	SC47	Hose - Vacuum Motor to Solution Tank
16	M5-LG-BK	M5 Plain Washer Black	77	SC36	Solution Tank. Champ Plus Powr-Flite
17	M5-P-ZN	M5 Single Coil Washer	78	TW007450	Lower Handle Tube
18	M6-10-E-ZN	M6 x 10 Hex Set Screw	79	TW008403	Link
19	SC45	M6 x 16 Hex Set Screw	80	TW007490	ABS Axle Spacer
20	M6-8-CP-ZN	M6 x 8 Pozi Pan Screw	81	TW007502	Rear Handle Cover
21	M6-80-E-ZN	M6 x 80 Hex Head Screw	82	PX13	Gasket 125 x 50 x 2mm
22	M6-I-ZN	M6 Full Nut	83	SC16	Gasket Lid - Champ Mk2
23	M6-P-BK	M6 Single Coil Washer Black	84	SC42	ABS Extruded Spacer Champ Plus
24	M6-S-ZP	M6 External Shake proof Washer	85	SC93	U Locking Spring Assembly
25	M8-20-E-ZN	M8 x 20 Hex Head Bolt	86	TW007914	Link Rod Assembly
26	M8-75-E-ZN	M8 x 75 Hex Head Screw	87	TW007341	Recovery Tank. Champ Plus Powr-Flite
27	M8-80-E-ZN	M6 x 80 Hex Head Screw	88	TW007604	Upper Handle Tube
28	M8-I-ZN	M8 Full Nut	89	TW007569	knob
29	M8-LN-ZN	M8 Nylon Washer	90	SC85	Vacuum Head Casting
30	M8-OHG-ZN	M8 Plain Washer	91	SC22	Pulley Guard
31	TW091051	Powr-Flite Logo Label	92	TW007656	Plate
32	TW000721	Suppressor Surge 110v USA	93	X8437	Powr-Flite Instruction Label
33	SC14	Filter Element	94	X8436	Powr-Flite Warning Label
34	SC102	Adapter Stern for Elbow	95	X8400	Powr-Flite Label Set Side and Front
35	PX6	Quick Connect Female Coupling	96	SC96	5mmx3mm Plain Rubber Washer
36	SC81	Plastic Elbow	97	SC20	8mm Nylon Tube - Red
37	SC17	Tee Connector-Plastic	98	SC140	ABS Spray Jet Retainer Moulding
38	SC18	Adapter- Stem to Quick fit	99	M1400C	Mains Cable Champ Plus Powr-Flite
39	SC19	Valve 110v Solenoid Shun Off	100	SC57	M20Cable Gland
40	PX5	Quick Coupling Male Brass	101	SC56	M20 Cable Gland Nut
41	SC82	Circlip	102	TW023046	Terminal Block 3 Way
42	SC75	Filter Recovery Tank	103	TW023055	Cable Strain Relief "P" Clip
43a	SC5	Pulley, Brush Roller 60mm Ref: 28 XL	104	TW023092	.5mm Earth Ring
44	SC3	Assembly Brush Super Champ	105	1928	Motor Vac 3 Stage 110v
45	TW040056	Sleeving for Handle	106	SC30	Bypass Pump Head
46	SC1	Champ Brush Bearing Cover & Assembly	107	TW033063	Hose Clip
47	SC4	Brush Drive Belt	108	TW063703	M14 Plain Brass Washer
48	SC6	30mm Motor Drive Pulley	109	TW065052	Cable Inlet Gland
49	SC29	Motor 110v Double Spindle	110	PX42	13mm x 18mm O-Clip
50	TW007096	Grommet Chassis to Vac. Hose	111	TW065064	Nylon Solution Hose
51	SC7	Roller Bearing Clutch	112	TW007912	Adjusting Rod Assembly
52	SC33	Main Wheel Axle	113	SC200	Drain Hose Assembly
53	SC69	Chassis Champ Plus Powr-Flite	116	PX46	M50 Nut with integral Collar
54	SC68	Front Lifting Handle	117	TW065013	M50 Washer
55	X8034	25 Amp Bridge Rectifier	118	PX14	Neoprene Gasket
56	SC11	Circuit Breaker zing Ear ZE700B 5.0 amp	119	PX10	Gate Valve
57	SC95	Bulkhead Fitting	120	PX11	Elbow
58	SC65	Handle for Waste Tank	121	TW007178	Carbon Brush (Pump Motor)
59	TW007321	Clip Black Plastic Coated	122	TW065088	Carbon Brush (Vac Motor 105)
60	TW007470	Height Adjusting Knob	123	TW065051	Carbon Brush Interrupter (Vac Motor 105)
61	TW007520	Cable Tie Wrap			

SELF-CONTAINED EXTRACTOR PFX7S PARTS



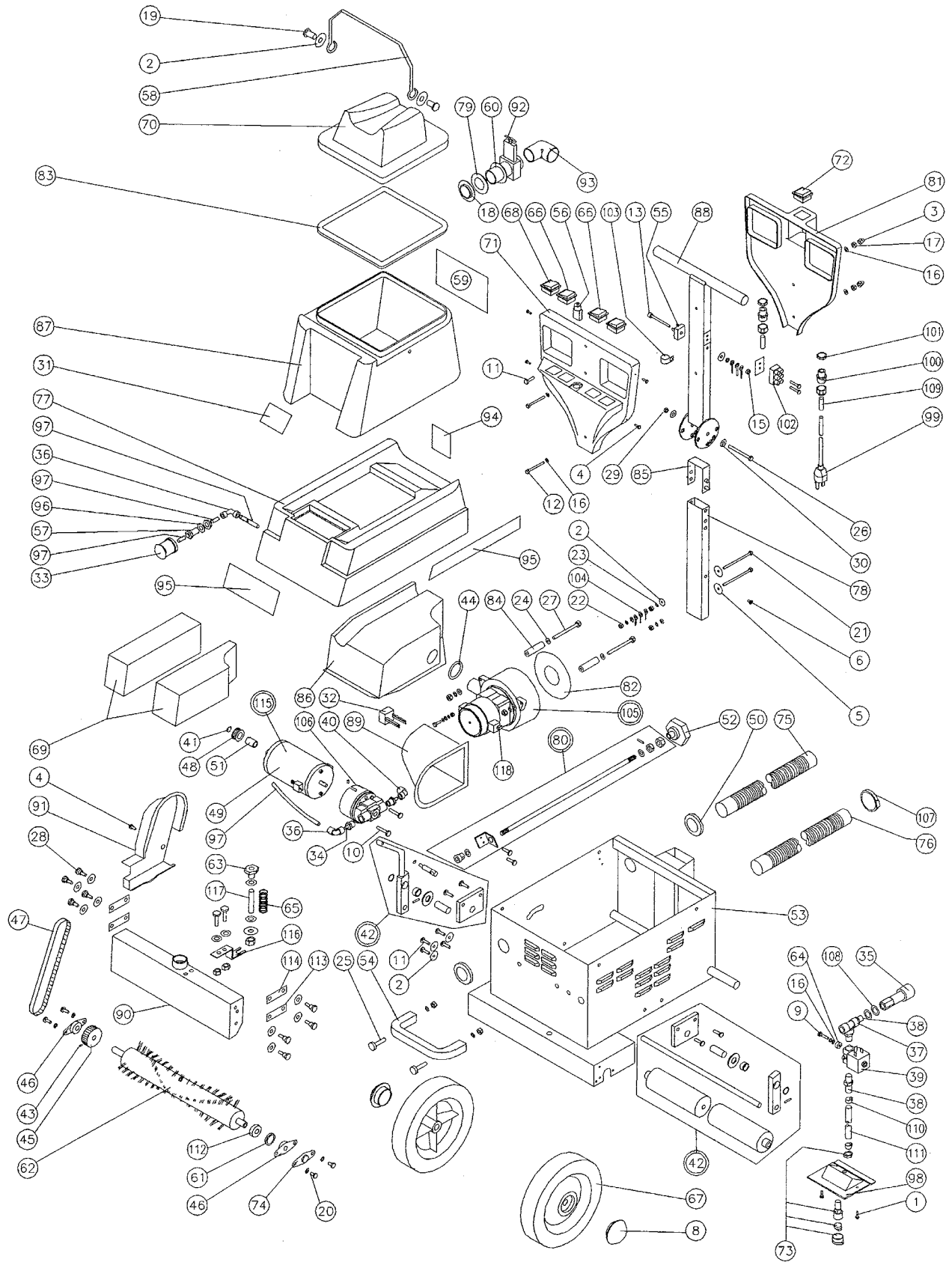
DRAIN HOSE ASSEMBLY

113

SELF-CONTAINED EXTRACTOR PFX9S PARTS

ref #	order #	description	ref #	order #	description
1	2-218	NQ6 x 112" ST Screw	61	TW007386	Bearing Cover
2	2-3395	5mm x 20mm Washer	62	SC3	Brush Assembly Super champ
3	2-3396	M5 Dome Nut Black	63	SC61	Height Adjustment Knob
4	2-3397	No 6 x 318 Pan Pozi Black	64	TW008343	Solenoid Spacer
5	2-3399	M6 x 30 Washer Black	65	TW008406	Spring Vac shoe tension
6	2-3405	1/8 x 8mm Pop Rivet	66	SC8	Switch splash-proof
8	FD17	Starlock Cap for 20mm Shaft	67	SC26	Wheel Super champ
9	M4-16-CP-ZN	M4 x 16 Pozi Pan Screw	68	SC9	Switch 2 Pole
10	SC87	M4 x 20 Pozi Screw	69	TW008523	Foam Set
11	SC55	Mf5 x 10 Pczy Pan Screw	70	SC15	Clear Top Cover Lid
12	M5-E-BK	M5 x40 Hex Screw Black	71	TW007412	Handle Front Cover (Unheated 3 openings)
13	M5-70-A-ZN	M5 x 70 Socket Cap Screw	72	SC10	Switch - Spray Rocker
14	SC80	M5 x 8 Pozi Pan Screw	73	SC31	Jet Body- Quick Release
15	M5-I-BK	M5 Full Nut Black	74	TW018486	End Cap for Bearing
16	M5-L-BK	M5 Plain Washer Black	75	SC49	Hose - Vacuum Shoe to Waste Tank
17	M5-P-ZN	M5 Single Cdl Washer	76	TW008436	Hose - Vacuum Motor to Solution Tank
18	PX46	M50 Hex nut with 1 Omm Collar	77	TW008340	Solution Tank Super Champ Powr-Flite
19	SC45	M6x16 Hex Set Screw	78	TW008344	Lower Handle Tube
20	M6-CP-ZN	M6 x 8 Pozi Pan Screw	79	TW065013	Plain 2mm Rubber Washer
21	W80 E-ZN	M6 x 80 Hex Heaci Screw	80	TW008236	Adjusting Rod Assembly
22	M6-I-ZN	M6 Full Nut	81	TW007502	Rear Handle Cover
23	M6-P-BK	MF6 Single Coil Washer Black	82	PX13	Gasket 125 x 50 x 2mm
24	M6-S-ZP	M6 Extenal Shake proof Washer	83	SC16	Gasket Lid - Champ Mk2
25	TW065004	M6 x 22 Pan Slotted Screw	84	SC42	ABS Extruded Spacer
26	M8-75-E-ZN	M8 x 75 Hex Head Screw	85	SC93	U Locking Spring Assembly
27	M8-100-E-ZN	M6 x 80 Hex Head Screw	86	TW018408	Silencer
28	TW065004	Shoulder Bolt	87	TW008303	Recovery Tank Super Champ Powr-Flite
29	M8-LN-ZN	8 nylon Washer	88	SC24	Upper Handle Tube
30	M8IHGZN	M8 Plain Washer	89	SC90	Cooling Air Duct
31	TW091051	Powr-Flite Logo Label	90	TW008459	Vacuum Head Casting
32	TW000721	Suppressor Surge 110v USA	91	SC22	Pulley Guard
33	SC14	Filter Element	92	PX10	Gate Valve Type 600/625
34	SC18	Adaptor Stem for Elbow	93	PX11	Elbow for Gate Valve
35	PX6	Quick Connector - Female Coupling	94	X8436	Powr-Flite Warning Label
36	SC81	Plastic Elbow	95	X8400	Powr-Flite Label Set Side and Front
37	SC17	Tee Connector - Plastic	96	SC96	15mmx3mm Plain Rubber Washer
38	SC18	Adapter- Stem Straight	97	SC20	8mm Nylon Tube - Red 5 C J.O
39	SC19	Valve 110v Shut off	98	SC140	ABS Spray Jet Retainer Moulding
40	TW007026	Straight Adaptor 8.00 to 114 BSP	99	M1400C	Mains Cable Champ Plus Powr-Flite
41	TW007036	Circlip Axle and Pump Shaft	100	SC57	M20 Cable Gland
42	TW008235	Adjustable Roller Assermbly	101	SC56	M20 Cable Gland Nut
43	SC83	M4 x 16mm Grub Screw	102	TW023046	Terminal Block 3 Way
44	TW007119	Grommet Vac Motor Horn	103	TW023055	Cable Strain Relief "P" Clip
45	SC5	60mm Brush Roller Pulley	104	TW023092	6.5mm Earth Ring
46	SC1	Bearing Assembly for Brush	105	1928	Motor Vac 3 Stage 110v
47	SC4	Brush Drive Belt	106	SC32	Bypass Pump Head - High Pressure
48	SC6	30mm Motor Drive Pulley	107	PX42	Hose Clip
49	SC29	Motor 110v Double Spindle	108	TW063703	M14 Plain Brass Washer
50	TW007096	Grommet Chassis to Vac. Hose	109	TW065052	Cable Inlet Gland
51	SC7	Roller Bearing Clutch	110	TW033069	Jubilee Clip
52	SC61	Height Adjustment Knob	111	TW070027	High Pressure Hose 17" cut length
53	TW008200	Super champ Chassis	112	3-5946	Brush Spacer
54	2-3274	Front Lifting Handle	113	TW008403	Vacuum Head Link - Small
55	X8034	25 Amp Bridge Rectifier	114	TW008404	Vacuum Head Link - Large
56	SC11	Circuit Breaker ang Ear ZE7WB 5.0 amp MB	115	5-3389	Pump Assembly Super Champ (Spares) 110v
57	SC95	Bulkhead Fitting	116	TW008342	Vacuum Head Spring locator
58	SC65	Handle for Waste Tank	117	SC60	Vacuum Head threaded Stud
59	X8437	Powr-Flite Instruction Label	118	4-3200	Brush Mechanism Ref:33423-16 for 110v
60	PX14	Gasket Neoprene Sponge			

SELF-CONTAINED EXTRACTOR PFX9S PARTS



MAINTENANCE GUIDE

Motors not running

CAUSE:

- 1) Power not reaching main switch.
- 2) Defective power cord.
- 3) Faulty switches or wiring.
- 4) Blown fuse or tripped circuit breaker
- 5) Problem with brushes, field windings, or armatures. (vacuum or brush motor)

SOLUTION:

- 1) Check power supply. Check fuses/circuit breaker. Contact service center.
- 2) Contact manufacturer or service center.
- 3) Contact manufacturer or service center.
- 4) Reset circuit breaker according to operating instructions or replace fuse if qualified..
- 5) Repair or replace defective part.

Loss of vacuum suction

CAUSE:

- 1) Vacuum head blocked.
- 2) Hoses blocked.
- 3) Recovery tank not sealed properly.

SOLUTION:

- 1) Visually inspect and clear blockage.
- 2) Visually inspect and clear blockage.
- 3) Check tank for damage or adjust for proper fit.

Brush not functioning properly

CAUSE:

- 1) Belt broken.
- 2) Brush jammed.
- 3) Clutch bearing seized.

SOLUTION:

- 1) Replace belt.
- 2) Visually inspect and clear blockage.
- 3) Contact manufacturer or service center.

Spray jet not functioning properly

CAUSE:

- 1) Jet blocked
- 2) Solution filter blocked.
- 3) Pump head, valves or diaphragm blocked or damaged.
- 4) Solenoid valve inoperative

SOLUTION:

- 1) Visually inspect and clean according to operating instructions.
- 2) Visually inspect and clean according to operating instructions.
- 3) Contact manufacturer or service center.
- 4) Contact manufacturer or service center.

WARRANTY-PLUS **Powr-Flite** **Value Assurance Package.**

5 YEARS on
One Piece
Housing
2 YEARS on
Brush Motor
1 YEAR on
Parts & Our
Workmanship

WARRANTY

The manufacturer warrants to the original purchaser that products manufactured are free from defects of workmanship and material, provided such goods are installed, operated and maintained in accordance with written manuals or other instructions for a period of 1 year from date of purchase on parts and workmanship. In case you as our customer, meet any trouble with your machine, contact your Powr-Flite® representative who will be happy to be of service to you and will take care of the warranty settlement.

NOTE: Alterations and changes made to the machine without written approval of the manufacturer and use of unapproved spare parts will not be covered by warranty.

SAVE THESE INSTRUCTIONS