

Safety, Operation, and Maintenance Manual for

# **Powr-Flite**®

SELF-CONTAINED CARPET EXTRACTORS

Models PFX3S, PFX7S, PFX9S



**Powr-Flite**®  
**COMMERCIAL FLOOR CARE EQUIPMENT**

*A Tacony Company*

3101 Wichita Court • Fort Worth, TX 76140



Read and follow all instructions, warnings and cautions before using this self-contained extractor!

**READ ALL INSTRUCTIONS BEFORE USING!**

**C**ongratulations on purchasing a Powr-Flite® self-contained extractor. Given proper care, this product will afford you many years of trouble-free operation. All parts have passed rigid quality control standards before being assembled to produce the finished product.

Prior to packaging, the extractor is again inspected for assurance of flawless assembly. This unit is protectively packed to prevent damage in shipment. We recommend removal and inspection of unit upon delivery for possible damage in transit. Only a visual examination will reveal damage that may have occurred.

If damage is discovered, immediately notify the transportation company that delivered your extractor. As a shipper, we are unable to report claims for concealed damage. You must originate any claim within 5 days of delivery.

This manual is for your protection and information. **PLEASE READ CAREFULLY** since failure to follow precautions could result in discomfort or injury. When using electrical equipment, basic safety precautions should always be followed.

**THANK YOU FOR CHOOSING POWR-FLITE®!**

TABLE OF CONTENTS	
INTRODUCTION .....	2
SAFETY PRECAUTIONS (English) .....	3
SAFETY PRECAUTIONS (Spanish) (French) .....	4
GROUNDING INSTRUCTIONS .....	5
GENERAL INSTRUCTIONS .....	6,7
Machine Components .....	6
Machine Operation .....	6
Pre-operation Checks .....	6
Cleaning Procedure (accessories) .....	7
Storage .....	7
Routine Care & Maintenance .....	7
ILLUSTRATED PARTS LIST .....	8-11
MAINTENANCE GUIDE .....	12

**CARE OF THIS SELF-CONTAINED EXTRACTOR**

**T**reat this unit as you would any other high grade precision made product. Dropping, unreasonable bumping across thresholds and other misuses may result in a damaged unit which will not be covered by warranty. When not in use, power cord should be wrapped around handle for storage.

**R**ead this manual completely before operating this extractor. It is important to follow instructions in this manual to prevent the possibility of injury or damage to the user and/or machine.

# IMPORTANT SAFETY PRECAUTIONS

**WARNING!** To reduce the risk of fire, electric shock, or injury

## WARNING

To avoid fire, **DO NOT** use with a flammable or combustible liquid to clean floor.



## WARNING

To avoid electric shock, **DO NOT** expose to rain. Store Indoors.

**When using this self contained extractor, basic precautions should always be followed, including the following:**

- 1) **DO NOT** leave unit when plugged in. Unplug from outlet when not in use and before servicing.
- 2) **DO NOT** allow unit to be used as a toy. Close attention is necessary when used around or near children.
- 3) Use only as described in this manual. Use only manufacturer's recommended attachments.
- 4) **DO NOT** use with damaged cord or plug. If unit is not working properly because it has been dropped, dropped into water, left outdoors, or damaged in any way, contact a service center of Powr-Flite®.
- 5) **DO NOT** pull or carry by cord, use cord as a handle, close door on cord, or pull cord around sharp edges or corners. **DO NOT** run unit over cord. Keep cord away from heated surfaces.
- 6) **DO NOT** unplug by pulling on cord. To unplug, grasp the plug, not the cord.
- 7) **DO NOT** handle plug or appliance with wet hands.
- 8) **DO NOT** put any objects into openings. **DO NOT** use with any opening blocked: keep free of dust, lint, hair, or anything that may reduce air flow.
- 9) Keep hair, loose clothing, fingers, and all parts of body away from openings and moving parts.
- 10) **DO NOT** pick up anything that is smoking or burning such as cigarettes, matches, or hot ashes.
- 11) **DO NOT** use to pick up hazardous chemicals.
- 12) Turn off all controls before unplugging.
- 13) Turn unit off immediately if foam or liquid comes from machine exhaust. Empty & clean out recovery (dirty) tank and use defoamer to correct the problem.
- 14) **DO NOT** use to pick up flammable or combustible liquids such as gasoline or use in areas where they may be present.
- 15) **DO NOT** use where oxygen or anesthetics are used.
- 16) **DO NOT** use an extension cord unless absolutely necessary. If an extension cord is used, then wire size must be #14 or larger and should not exceed 25 ft. in length. Extension cord must be a three-wire type to insure grounding protection.
- 17) Replace damaged or worn parts immediately with genuine original equipment parts to maintain safety.
- 18) This unit must be connected to a properly grounded outlet only. See grounding instruction.

## MEDIDAS DE SEGURIDAD

**PELIGRO!** Para reducir el riesgo de incendio, descarga eléctrica o daño:

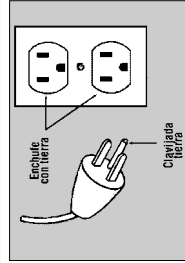
NO SE exponga a la lluvia a guarde bajo techo. Una sacudida eléctrica puede suceder si se usa en superficies húmedas.



NO utilice la unidad para levantar líquidos inflamables o combustibles como gasolina.

### PARA SU SEGURIDAD

- 1) **NO DEJE** la aspiradora enchufada. Desconecte la cuando no la use y antes de darle servicio.
- 2) **NO PERMITE** que se use como juguete. Ponga atención cuando se use cerca de niños.
- 3) **USE SE SOLAMENTE** de acuerdo a las instrucciones y con accesorios recomendados por el fabricante.
- 4) **NO USE** con el cable o clavija dañados. Si la unidad ha sido golpeada, mojada, o dañada en algún modo llame al centro de servicio o Power-Flite®.
- 5) **NO JALE** o cargue del cable, no machuque el cable o lo estire sobre objetos filosos. **NO USE** la unidad sobre el cable.
- 6) **NO DESENCHUFE** jalando el cable. Para hacerlo jale de la clavija no del cable.
- 7) **NO TOME** la clavija o el aparato con las manos mojadas.
- 8) **NO TAPE** objetos en las ventillas. **NO USE** si alguna está tapada. Mantenga limpia de polvo, pelusa o cualquier obstrucción.
- 9) Mantenga el pelo, ropa suelta manos y partes del cuerpo lejos de las aberturas y partes móviles.
- 10) **NUNCA** aspire objetos que mandose o humeando como cigarrillos, cenizas calientes.
- 11) No use unidad a recoje materiales peligrosas.
- 12) Apague todos los controles antes de desconectar.
- 13) Paga las unidad inmediatamente si hay espuma o líquidos saliendo da bajo de la unidad. Si esto para limpia el tanqué y también usa un químico de espuma.
- 14) **NO UTILIZE** la unidad para levantar líquidos inflamables o combustibles como gasolina: o use en areas donde se encuentren estos líquidos.
- 15) Replacen los partes gastadas o dañadas inmediatamente para mantener la seguridad.
- 16) Esta unidad debe ser conectada a un enchufe correctamente aterrazado solamente. Vea los instrucciones de tierra. Si su aspiradora/soplador tiene un enchufe para una boquilla de potencia, apáguela siempre antes de conectar o desconectar la goquilla.
- 17) **NO USE** donde oxígeno o anestésicos sean empleados.
- 18) **NO USE** extensión eléctrica mas que cuando sea absolutamente necesario. Si usa extensión, el cable debe de ser calibre #14 o mayor y no debe exceder 50 pies de longitud. El cable extensión debe ser de 3 polos para asegurar protección de tierra.



### INSTRUCCIONES DE TIERRA

**¡PELIGRO!**

Una conexión incorrecta de tierra puede resultar en una descarga eléctrica. Consulte con un electricista calificado o persona de servicio si tiene duda acerca del enchufe y su tierra. No modifique el enchufe de las unidad. Si no encaja en el enchufe, haga instalar un enchufe apropiado por un electricista calificado.

## IMPORTANTES MEDIDAS DE SEGURIDAD

**AVERTISSEMENT!** Pour réduire les risques d'incendie, de choc électrique ou de blessure:

NE PAS aspire de matières humides. Ne pas exposer à l'intérieur.



NE PAS utiliser l'appareil avec des liquides inflammables en aspirant afin d'éviter du feu.

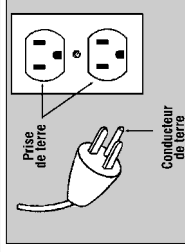
### POUR VOTRE SÉCURITÉ

- 1) **NE PAS** laisser l'appareil sans surveillance lorsqu'il est branché. Débrancher lorsque l'appareil n'est pas utilisé et avant l'entretien.
- 2) **NE PAS** permettre aux enfants de jouer avec l'appareil. Une attention particulière est nécessaire lorsque l'appareil est utilisé par des enfants ou à proximité de ces derniers.
- 3) N'utiliser que conformément à cette notice avec les accessoires recommandés par le fabricant.
- 4) **NE PAS** utiliser si le cordon ou la fiche est endommagé. Retourner l'appareil à un atelier de réparation s'il ne fonctionne pas bien, s'il est tombé ou s'il a été endommagé, oublié à l'extérieur ou immergé.
- 5) **NE PAS** tirer, soulever ou traîner l'appareil par le cordon. **NE PAS** utiliser le cordon comme une poignée, le coincer dans l'embrasure d'une porte ou l'appuyer contre des arêtes vives ou des coins. **NE PAS** faire rouler l'appareil sur le cordon. Garder le cordon à l'écart des surfaces chaudes.
- 6) **NE PAS** débrancher en tirant sur le cordon. Tirer plutôt la fiche.
- 7) **NE PAS** toucher la fiche ou l'appareil lorsque vos mains sont humides.
- 8) **NE PAS** utiliser des rallonges ou des prises qui n'ont pas de capacité suffisante pour transporter le courant.
- 9) **NE PAS** utiliser où l'oxygène ou les gazes sont utilisés.
- 10) **N'INSÉRER** aucun objet dans les ouvertures. **NE PAS** utiliser l'appareil lorsqu'une ouverture est bloquée. S'assurer que de la poussière, de la peluche, des cheveux ou d'autres matières ne réduisent pas le débit d'air.
- 11) Maintenir les cheveux, les vêtements amples, les doigts et toutes les parties du corps à l'écart des ouvertures et des pièces mobiles.
- 12) **NE PAS** aspirer de matières en combustion ou qui dégagent de la fumée, comme des cigarettes, des allumettes ou des cendres chaudes.
- 13) **NE PAS** utiliser l'aspirateur pour soulever les produits chimiques dangereux.
- 14) Mettre toutes les commandes à la position ARRÊT avant de débrancher l'appareil.
- 15) Couper le courant immédiatement si le liquide de nettoyage sort de l'appareil. Videz et nettoyez le réservoir interrim et admettez le liquide de nulle écume.
- 16) **NE PAS** aspirer des liquides inflammables ou combustibles, comme de l'essence, et ne pas faire fonctionner dans des endroits où peuvent se trouver de tels liquides.
- 17) Remplacez taré parties vite à maintenir sécurité.
- 18) Ne brancher qu'à une prise de courant avec mise à la terre. Voir les instructions visant la mise à la terre.

### INSTRUCCIONES VISANT LA MISE À LA TERRE

**AVERTISSEMENT!**

Un conducteur de terre mal raccordé peut entraîner un risque de choc électrique. Consulter un électricien ou un technicien d'entretien qualifié si vous n'êtes pas certain que la prise soit correctement mise à lat terre. Ne pas modifier la fiche fournie avec l'appareil-se elle ne peut être insérée dans la prise, faire installer une prise adéquate par un electricien qualifié.



# GROUNDING INSTRUCTIONS

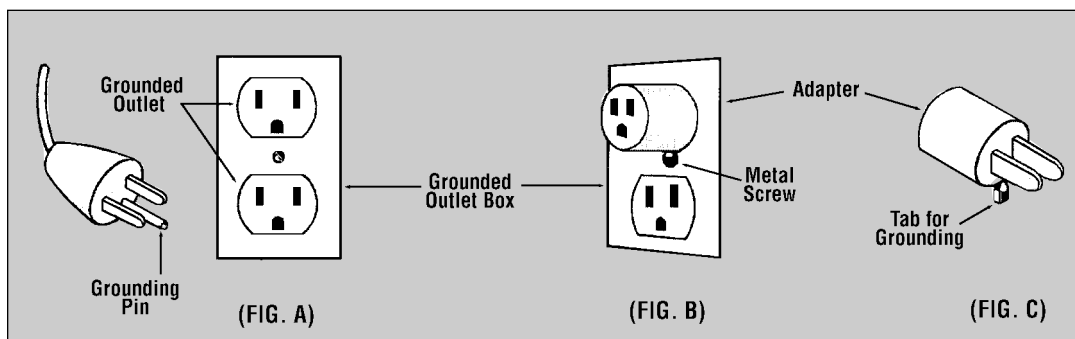
**DANGER:** Improper use of the grounding plug can result in a risk of electric shock.

## GROUNDING INSTRUCTIONS

This self-contained extractor must be properly grounded. If it should malfunction or breakdown, grounding provides a path of least resistance for electrical current to reduce the risk of electric shock. This machine is equipped with a cord having an equipment-grounding conductor and grounding plug. The plug must be inserted into an appropriate outlet that is

properly installed and grounded in accordance with all local codes and ordinances. If repair or replacement of the cord or plug is necessary, **DO NOT** connect the grounding wire to either flat blade terminal. The wire with insulation having an outer surface that is green with or without stripes is the grounding wire.

## GROUNDING METHODS



This unit is for use on a nominal 120 volt circuit, and has a grounded plug that looks like the plug illustrated in **(Fig. A)**. A temporary adapter that looks like the adapter illustrated in **(Fig. B&C)** may be used to connect the plug to a 2-pole receptacle as shown in **(Fig. B)** if a properly grounded outlet is not available.

The temporary adapter should be used only until a properly grounded outlet **(Fig. A)** can be installed by a qualified electrician. The green color rigid ear, lug, or the like extending from the adapter must be connected to a permanent ground such as a properly grounded outlet box cover. Whenever the adapter is used, it must be held in place by a metal screw.

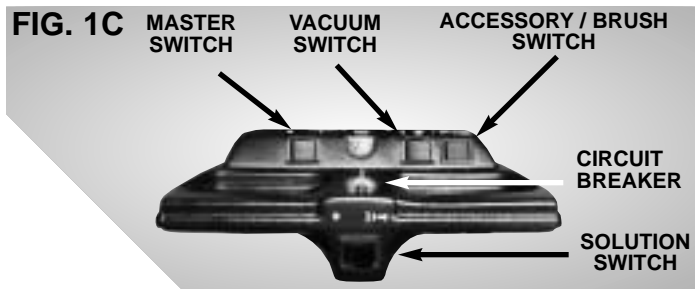
**NOTE:** In Canada, the use of a temporary adapter is not permitted by the Canadian Electrical Code.

### WARNING!

**Improper connection of the equipment-grounding conductor can result in a risk of electric shock. Check with a qualified electrician or service person if you are in doubt as to whether the outlet is properly grounded. DO NOT modify the plug provided with the appliance. If it will not fit the outlet, have a proper outlet installed by a qualified electrician.**

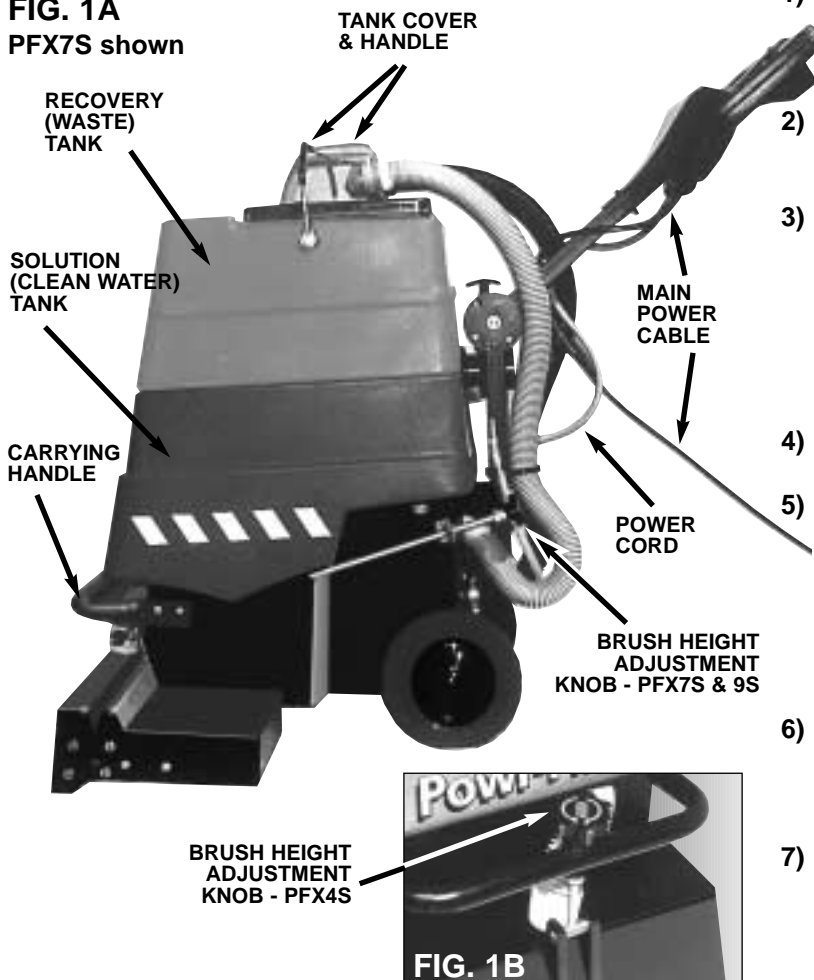
# GENERAL INSTRUCTIONS

## PRE-OPERATION INSTRUCTIONS



**NOTE: (color fastness)** Before using carpet cleaning chemicals, test on an inconspicuous part of the carpet for color fastness. Place the solution on a small piece of clean white material or tissue, then rub the carpet vigorously. Excessive amounts of dye showing on the material would indicate that the

**FIG. 1A**  
PFX7S shown



- 1) Move the furniture around to give a clear working area. Cover bottoms of furniture legs where possible. (aluminum foil or foam blocks are ideal) Pin up curtains and drapes.
- 2) Have a suitable size clean bucket available for filling the solution tank with warm water. **CAUTION:** - Do not add the cleaning agent at this stage
- 3) Adjust the machine brush operating depth with the knob on the back of models PFX 7S & 9S (**FIG. 1A**) and the front of PFX4S (**FIG. 1B**) to suit the carpet height. **NOTE:** The raised counter clockwise position of the knob should be used when the machine is being stored. **NOTE:** Excess brush contact may overload motor circuit breaker or reduce wet extraction quality.
- 4) Remove the transparent cover and remove the recovery tank below cover. (**FIG. 1A**)
- 5) Measure carpet cleaning solution such as Powr-Flite's Kold-Powr® per manufacturers recommended ratio into the clean water tank and fill with hot water from a very clean bucket. **DO NOT** use the waste tank to fill the solution tank as debris could damage the pump or block the jet. **WARNING:** **DO NOT** exceed 150° (65° C)
- 6) Replace recovery (dirty water) tank above solution tank. (**FIG. 1A**) Add defoamer solution per manufacturer's instructions as needed. 2 oz. Powr-Flite Powr-Defoamer®
- 7) Replace the transparent cover. Pull back handle to lock cover into place. (**FIG. 1A**) Treat heavily soiled areas by using traffic lane cleaner such as Powr-Flite's Fast Lane®.

## OPERATION OF SELF-CONTAINED CARPET CLEANER

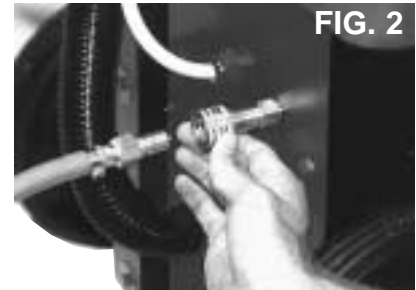
- 1) Plug main power cable (**FIG. 1A**) into outlet. **WARNING:** This machine must be properly grounded. See grounding instructions.
- 2) Press the master switch to the on position. Then press the vacuum switch on and the accessory/brush switch to the right. (**FIG 1C**)
- 3) Press and hold the solution switch (**FIG 1C**) to apply the cleaning solution. Pull the machine backwards at the same time to clean the carpet. Stop the solution spray about 12" (30cm) before the end so all of the solution is vacuumed up. Slightly overlap the next cleaning pass to prevent streaking. A two (2) wet pass maximum is recommended to avoid overwetting and one dry pass without solution spray will aid in drying time. After a few passes, check the waste tank to see that no foam is present. Add extra defoamer if necessary.
- 4) Make sure to empty the recovery (top) tank (**FIG. 1A**) when it is approximately 3/4 full. Do not refill the solution tank without emptying all the contents of the recovery tank first.

# GENERAL INSTRUCTIONS

## STORAGE

### WHEN CLEANING IS FINISHED:

- 1) Connect the drain hose (clipped to the handle) to the solution fitting at the back of the machine and place the other end into the waste tank, turn on the accessory switch. **(FIG 1C)** This will pump the remaining solution into the waste tank for easy drainage.
- 2) To disconnect the solution hose, push in on the ring of the solution fitting. **(FIG 2)** Switch off the machine, remove power plug from the socket, and empty the waste tank. Leave waste tank open when storing.
- 3) Raise the brush to storage position.



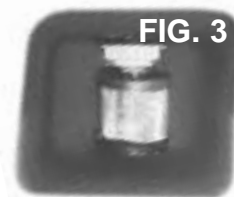
## ACCESSORIES / TOOLS (OPTIONAL)

For upholstery cleaning and inaccessible areas. Remove the white cuff from the transparent cover **(FIG 1A)** and connect the accessory vacuum hose in its place. Connect the accessory solution hose to the solution fitting at the back of the machine by pushing back the locking ring to fit. **(FIG 2)** Then press vacuum switch & press the accessory/brush switch to the left **(FIG 1C)** and the wand or upholstery tool can now be used.

# ROUTINE MAINTENANCE INSTRUCTIONS

## DAILY / INTERVAL

- 1) The filter in the solution tank **(FIG 3)** should be kept clean. It can be removed if necessary. A damaged filter should be replaced otherwise blockages and/or damage to the pump head and spray jet can occur.
- 2) Check the spray jet **(FIG 4)** for blockage and a uniform spray pattern. Remove jet and blow through to clean. Do not use a pin as this may cause damage to the jet.
- 3) Check and remove any debris or lint build-up from the vacuum head, brush, and brush housing.
- 4) Always wash out the tanks with clean water after use. To do this, pour clean water into the solution tank and spray through spray tip to clear chemical residue from the pump, lines, and spray tip. Allow the vacuum to run for a few minutes after use to aid the machine in drying out and to help prevent bacteria and odors.



**FIG. 4**

SOLUTION  
SPRAY  
JET



## WEEKLY

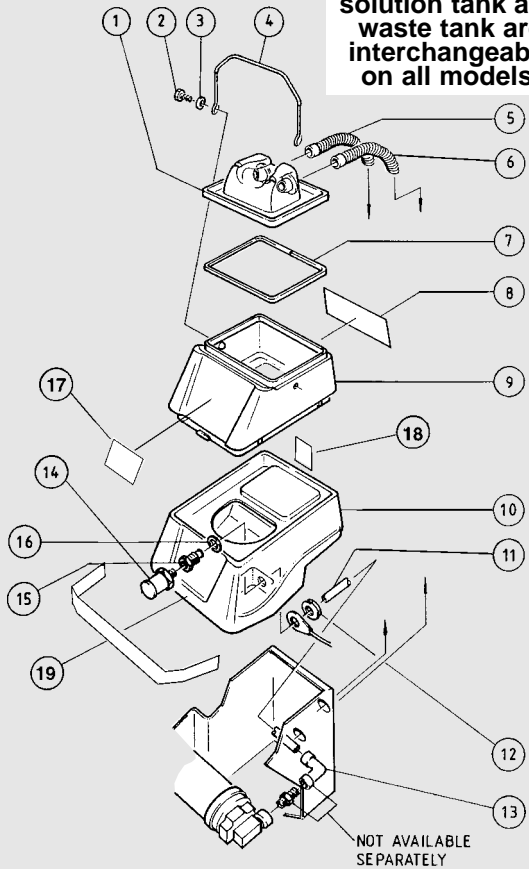
- 1) Inspect hoses (unseen blockages sometimes occur), hose cuffs, and the rubber seal on the recovery tank lid. The main cable, plug, and switches should also be examined for damage.

**NOTE:** It is advisable to store the unit with the recovery tank lid removed.

**CAUTION: THIS UNIT MUST BE PROTECTED FROM FREEZING.** Damage from freezing could cause machine to malfunction.

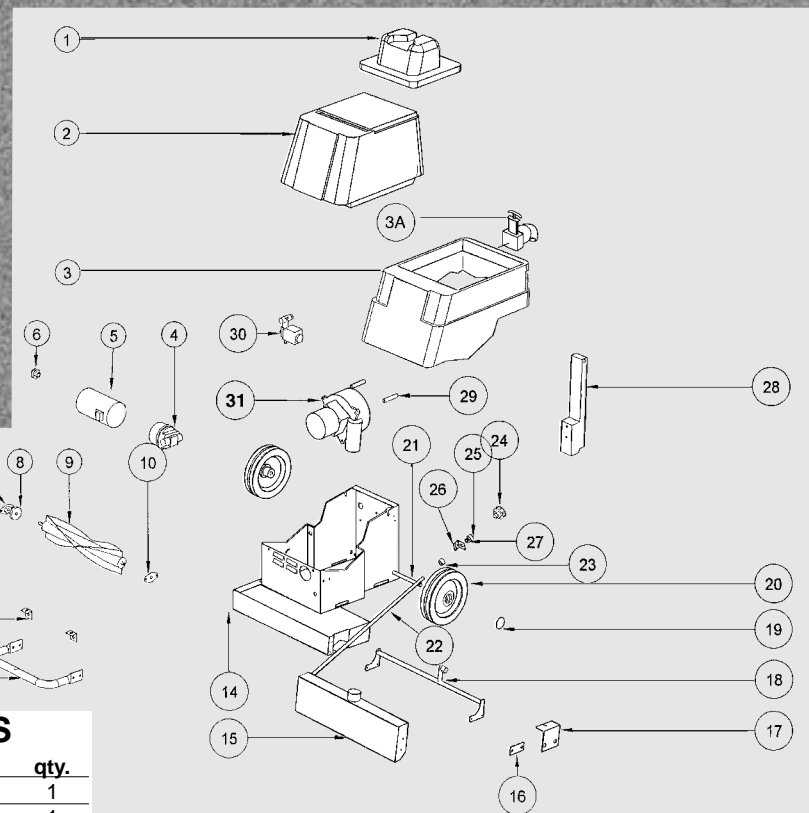
# ILLUSTRATED PARTS LIST

**\*NOTE - All tank parts except for solution tank and waste tank are interchangeable on all models.**



## TANK ASSEMBLY • PFX4S shown

ref #	order #	description	qty.
1	SC15	Lid, clear, PFX4S, 7S & 9S	1
2	07028	Screw, M6, hex head., x20 - plated	4
3	31913	Washer, M6, flat - plated	4
4	07305	Handle for waste tank	1
5	07434	Hose, vacuum - grey	1
6	07433	Hose, recovery - white	1
7	SC16	Gasket for lid,	1
8	X8437	Instruction labels	1
9	07601	Waste tank, PFX4S	1
10	07437	Solution tank, PFX4S	1
11	SC20	Nylon tube, 8mm, I.D. - red	1
12		Back nut for bulkhead fitting	1
13	07017	Elbow, plastic,	2
14	SC14	Filter, solution tank,	1
15	07019	Bulkhead fitting	1
16	10018	Sealing washer, bulkhead	1
17	X8438	SHP label	1
18	X8436	Warning label	1
19	X8400	Powr-Flite® barricade label	1



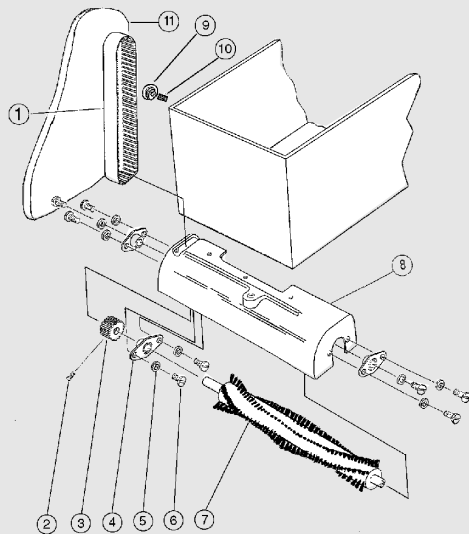
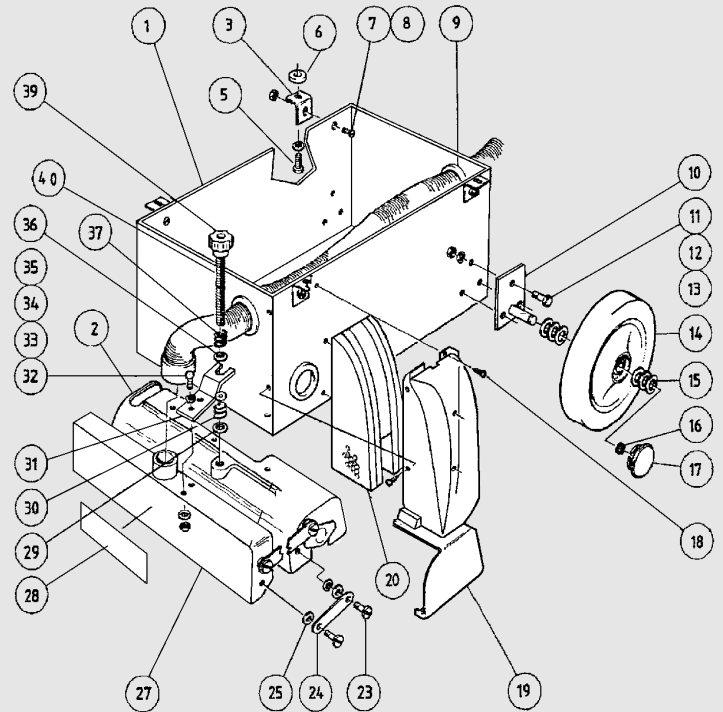
## PFX7S BRUSH, TANK & CHASSIS

ref #	order #	description	qty.
1	07409	Lid, clear	1
2	07340	Waste tank	1
3	07334	Solution tank	1
3A	PX10	Dump valve	1
4	SC30	Pump head	1
5	SC29	Motor for brush and pump	1
6	07091	Pulley, driver	1
7	07911	Stub axle assembly	1
8	07081	Pulley, brush drive	1
9	08378	Brush	1
10	SC1	Bearing and cover assembly	1
11	SC22	Pulley guard	1
12	07076	Bracket	2
13	07173	Front lift handle	1
14	07750	Chassis assembly	1
15	08459	Vacuum shoe	1
16	08404	Link, chassis to shoe	1
17	07656	Cover, bearing assembly	1

ref #	order #	description	qty.
18	07223	Front link assembly	1
19	07456	Wheel cap	2
20	SC26	Wheel, PFX9S only	2
21	07105	Axle	1
22	07224	Bar adjuster assembly	1
23		Bush	1
24	07469	Knob	1
25		Bush	1
26		Bracket	1
27		Washer	1
28	7450	Lower handle	1
29	7507	Spacer, PFX7S only	2
30	07032	Solenoid	1
31A	1928	Vac motor, PFX7S & 9S	1

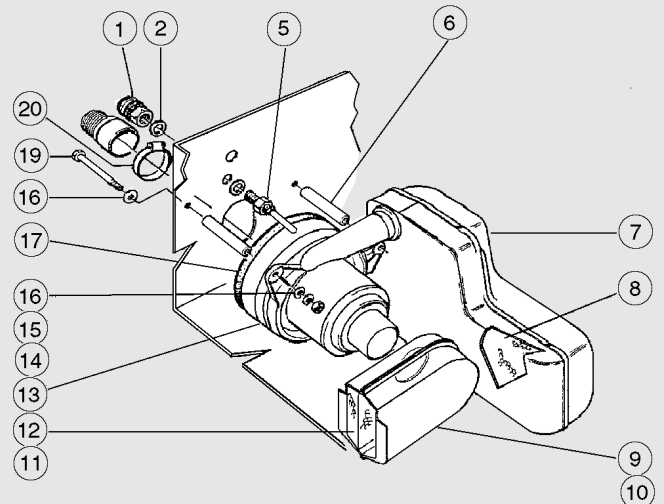
## CHASSIS ASSEMBLY PFX9S

ref #	order #	description	qty.
1	08000	Chassis body	1
2	08488	Cover, drive belt assembly	4
3	07076	Bracket, tank mount	1
5	07003	Screw, M6 hex HD x 10	1
6	31960	Washer, M6 spring	1
7	08005	Screw, M6 x 10 C/SK slot HD	1
9	07096	Grommet, chassis	1
10	08105	Axle assembly, less wheel	2
11	30911	Screw, M6 x 16	1
12	31960	Washer, M6 spring	1
13	32910	Nut, M6 hexagon x 5mm	1
14	SC26	Wheel	1
15	07007	Washer, flat 23 x 13 x 1.5	1
16	07036	Circlip	1
17	FD17	Wheel embellisher	1
18		Screw, self tap	1
19	08409	External baffle for silencer	1
20		Foam silencer	1
23	65004	Screw, special shoulder 6mm	1
24	08403	Link, vac shoe to brush casting	1
25	07044	Washer, M6 plain	1
27	08459	Casting, vacuum head	1
28	91092	Warning label, wand head	1
29	07037	Nut, M8 full	1
31	08405	Bracket, tension vac shoe	1
32	07230	Screw, M5	1
33	07447	Nut, M5	1
34	07046	Washer, M5 Shakeproof	1
35	08406	Spring, vac shoe tension	1
36	01052	Washer, M8	1
39	08069	Knob	1
40	08472	Stud, threaded vac shoe	1
41	07523	Hose to solenoid	1



## BRUSH DRIVE ASSEMBLY PFX9S

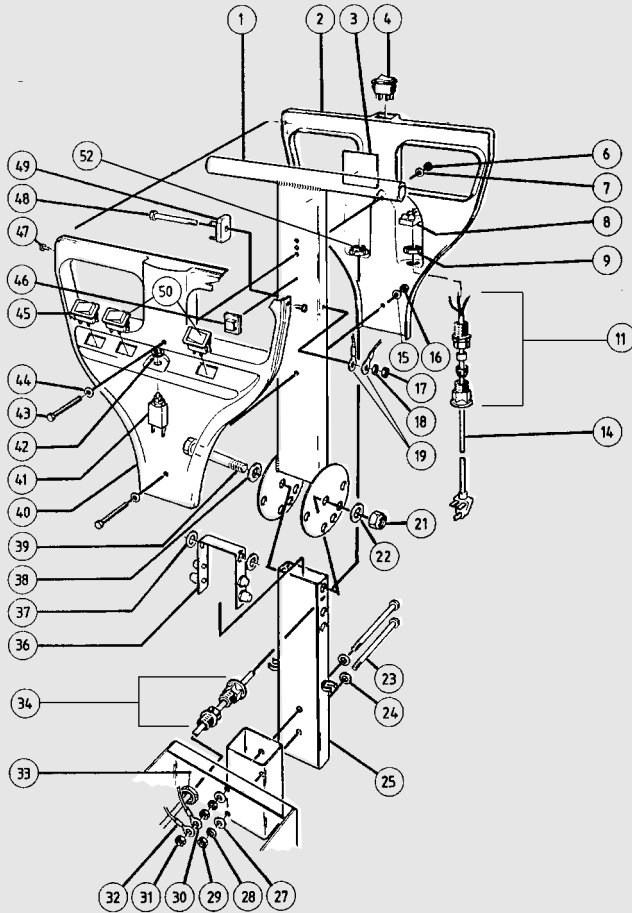
ref #	order #	description	qty.
1	SC4	Brush belt	1
2		Grub screw for pulley	1
3	SC5	Pulley brush roller	1
4	SC1	Brush bearing	2
5	07047	Washer, M5 flat	8
6	07049	Screw, M5 pan head	6
7	SC3	Brush for PFX7S & 9S	1
8	08086	Housing for brush	1
9	SC6	Motor pulley	1
10	SC7	Clutch	1
11	SC22	Pulley guard	2



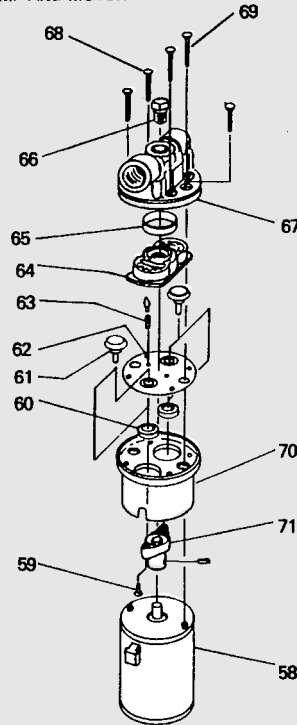
## VAC MOTOR & SILENCER PFX9S

ref #	order #	description	qty.
1	PX6	Coupling, quick connect, female	1
2	63703	Washer, brass	2
5	07031	Adapter stem, quick fit	1
6	65022	Spacer, plastic	4
7	8408	Silencer	1
8		Silencer foam	1
9	08410	Tube transfer, vac motor	1
11	08409	External baffle	1
12		Silencer foam	1
13	1928	Vacuum Motor	1
14	32910	Nut, full M6	2
15	31960	Washer spring, M6	2
16	31913	Washer, plain M6	2
17	07514	Gasket	1
18	31913	Washer, plain M6	2
19	30939	Bolt, hex HD, M6 x 90	2
20	33063	Hose clip	1

## CHASSIS & BASE ASSEMBLY PFX4S & PFX7S



PUMP AND MOTOR



ref #	order #	description
1	07096	Grommet, chassis to vacu
2	33063	Clip for hose 2"
3	07433	Hose for vacuum - grey
4	30934	Bolt, hex head, 80mm
5	07517	Spacer, ABS vac motor
6	31913	Washer, plain, M6
7	31960	Washer, M6, spring, plate
8	32910	Nut, M6, full, plated
9	1928	Motor, vacuum, 120V, PF
	1937	Motor, vacuum, 120V, PF
10	07003	Screw, M6, hex head, x10
11	30911	Screw, M6, hex head, x16
12	07076	Bracket, tank mounting
13	31913	Washer, plain, M6
14	07100	Chassis, machine, PFX4S
	7750	Chassis, machine, PFX7S
15		Rating label
16	07490	Spacer, axle, PFX4S & 7S
17	SC25	Wheel for PFX4S
18	31913	Washer, plain, M6
19	07036	Circlip for wheel retention
20		Wheel embellisher (come
21	07105	Axle for PFX4S & 7S
22	07966	Label, brush height
23	30911	Screw, M6, hex head, x16
24	31960	Washer, M6, spring
25	07096	Grommet, chassis to vac
26	07173	Handle, front lift, PFX4S &

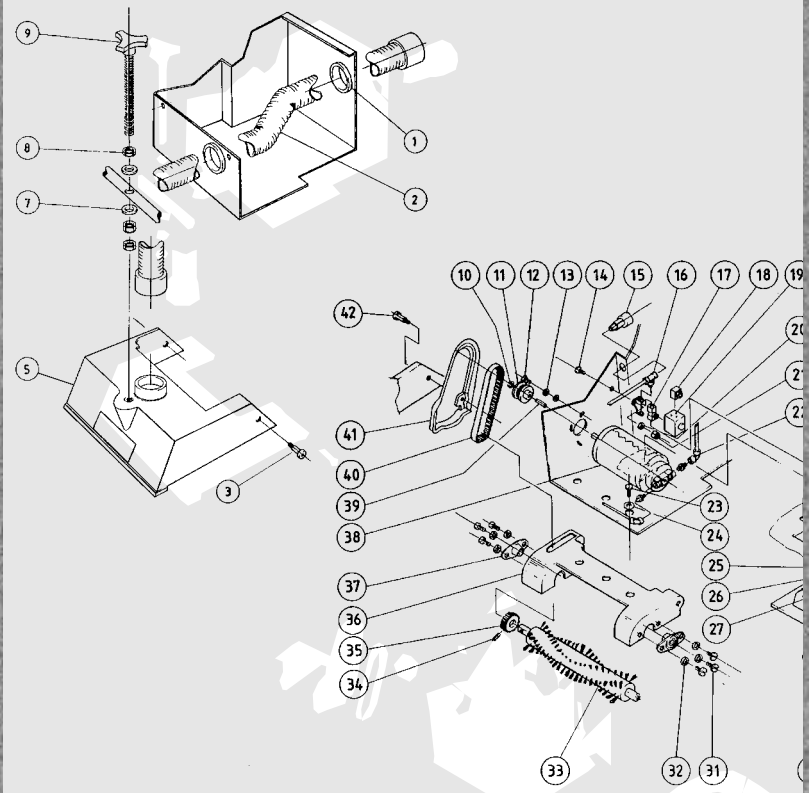
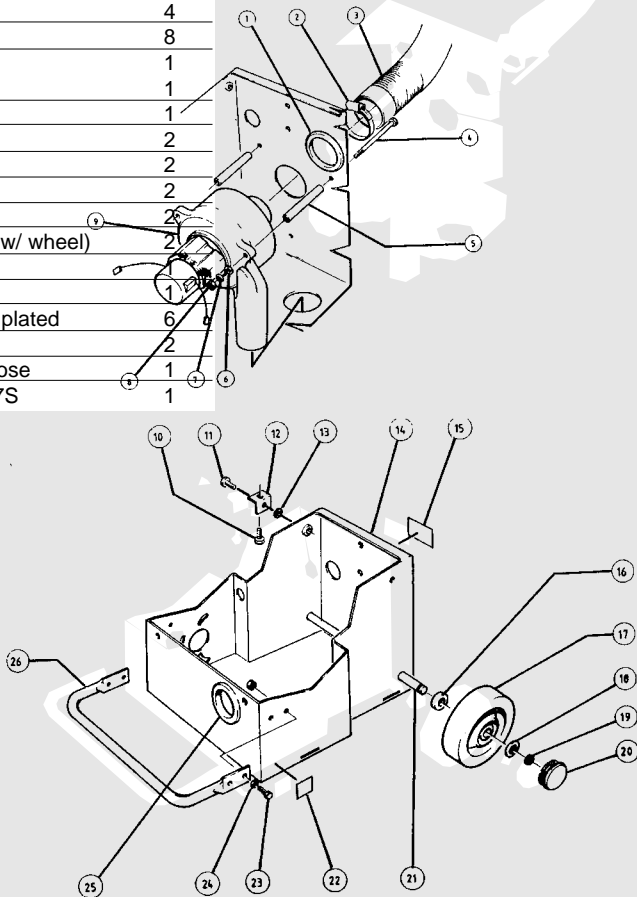
## HANDLE & MOTOR ASSEMBLY PFX4S, PFX7S & PFX9S

ref #	order #	description	qty.
1	SC24	Handle, upper	1
2	SC20	Handle cover, lower	1
3	50027	Insulation	2
4	SC10	Spray switch	1
6	07447	Nut, M5	1
7	07047	Washer, plain, M5	2
8	23046	Terminal block, L.E.N.	1
9	22027	Back nut for strain relief cable	
11	22026	Strain relief assembly	1
14	M1400C	Cable, 50', fits PFX7S, 9S	1
	M1400E	Cable, 30', fits PFX4S	1
15	07047	Washer, plain, M5	1
16	07447	Nut, M5	1
17	07447	Nut, M5	1
18	07047	Washer, M5	1
19	07202	Wiring harness	1
21		Nut, M8, (nyloc)	1
22		Washer, M8	1
23	30934	Bolt, M6 x 90	2
24	31913	washer, plain, M6	1
25	07450	Tube, lower	1
27	07054	Washer spring, M6	2
28	31913	Washer, plain, M6	2
29	31960	Nut, M6	1
30	07207	Wiring harness	1
31	031960	Nut, M6	1
32	07202	Wiring harness	1
33	22027	Backnut for strain relief	1

ref #	order #	description	qty.
34	22026	strain relief assembly	1
36	07451	Disc handle adjust mechanism	1
37	07550	Brass spacer for handle	2
38		Washer, M8	1
39		Bolt, M8	1
40	07402	Cover handle, top	1
41	SC11	Breaker, 120V, 15A, circuit	1
42		Nut for breaker	1
43		Screw, M5 x 40	2
44	07047	Washer, plain, M5	1
45	SC9	Switch, two position	1
46		Cable tie clamp	1
47	30916	Self-tap screw	2
48		Screw, M5 x 70	1
49	X8034	Rectifier bridge, 35A	1
50	SC8	ON/OFF switch	2
52	22026	Cable assembly & strain relief	1
58	07094	Motor 120V, pump/brush	
58A	07078	Replacement carbon brushes (not shown)	1
59		Self-tap screw	1
60		Diaphragm	2
61	25229	Replacement kit	
63	25216	Poppet & spring	1
64	25213	Check valve for bypass head	1
66	25215	Plug for bypass HD	1
67	25230	Housing bypass pump	1
68	30952	Screw, M4	2
69	25239	Screw	4
70	25228	Cover assembly	1
71	25240	'O' cam assembly	1

	qty.
um	1
	4
	2
	2
	2
s	4
	2
7S & 9S	1
4S	1
plated	4
	4
	4
	8
	1
	1
	1
	2
	2
	2
w/ wheel)	2
	1
plated	6
	2
ose	1
7S	1

# ILLUSTRATED PARTS LIST



## CHASSIS & BRUSH ASSEMBLY PFX4S & PFX7S

ref #	order #	description	qty.
1	07096	Grommet, chassis to vac	1
2	07433	Hose, vacuum shoe	1
3	07058	Shoulder bolt, M6	2
5	07459	Vac shoe	1
7	31913	Washer, plain, M6	2
8	32910	Hex nut, M6 x 5mm	1
9	07169	Height adjustment knob	1
10	07036	Circlip	1
11	SC6	Pulley, motor drive	1
12	07049	Screw, MB pan head, pozi x 101g	4
13	07047	Washer, M5, plain	4
14	30950	Screw, M4, pan head x 10	1
15	PX6	Quick connect, female	1
16	SC17	Tee assembly	1
	SC18	Tee piece adapter	1
17	SC19	Solenoid, 120V	1
18		Solenoid wiring connector	1
19		Coil for solenoid	1
20	31912	Washer, M4, plain	1

ref #	order #	description	qty.
21	30902	Nut, M4, (nyloc style)	1
22	07017	Elbow, plastic	2
23	07209	Screw, M6	3
24	31960	Washer, M6, spring	3
25	65064	Hose, solution tank, black	1
26	65063	O Clip	1
27		Nut for jet assembly	1
28	30916	Screw pan head, self tap, no.6	2
29	07487	Retainer jet assembly	1
30	07422	Jet assembly	1
31	07084	Screw, M5, pan head, pozi x 8	6
32	07047	Washer, M5, flat	6
33	SC2	Brush & axle assembly, PFX4S	1
	SC3	Brush & axle assembly, PFX7S & 9S	1
34	07066	Grubscrew, M4, socket	1
35	SC5	Pulley, brush	1
36	07486	Brush housing	1
37	SC1	Bearing housing assembly	2
38	SC29	Brush motor	1
39	SC7	Bearing clutch roller	1
40	SC8	Belt for brush drive	1
41	SC21	Guard for pulley, PFX4S	1
42	7458	Bolt shoulder	2
	SC27	Zematic varistor (not shown)	1
	SC30	Pump head (not shown)	1

# MAINTENANCE GUIDE

## Motors not running

**CAUSE:**

- 1) Power not reaching main switch.
- 2) Defective power cord.
- 3) Faulty switches or wiring.
- 4) Blown fuse or tripped circuit breaker
- 5) Problem with brushes, field windings, or armatures. (vacuum or brush motor)

**SOLUTION:**

- 1) Check power supply. Check fuses/circuit breaker. Contact service center.
- 2) Contact manufacturer or service center.
- 3) Contact manufacturer or service center.
- 4) Reset circuit breaker according to operating instructions or replace fuse if qualified..
- 5) Repair or replace defective part.

## Loss of vacuum suction

**CAUSE:**

- 1) Vacuum head blocked.
- 2) Hoses blocked.
- 3) Recovery tank not sealed properly.

**SOLUTION:**

- 1) Visually inspect and clear blockage.
- 2) Visually inspect and clear blockage.
- 3) Check tank for damage or adjust for proper fit.

## Brush not functioning properly

**CAUSE:**

- 1) Belt broken.
- 2) Brush jammed.
- 3) Clutch bearing seized.

**SOLUTION:**

- 1) Replace belt.
- 2) Visually inspect and clear blockage.
- 3) Contact manufacturer or service center.

## Spray jet not functioning properly

**CAUSE:**

- 1) Jet blocked
- 2) Solution filter blocked.
- 3) Pump head, valves or diaphragm blocked or damaged.
- 4) Solenoid valve inoperative

**SOLUTION:**

- 1) Visually inspect and clean according to operating instructions.
- 2) Visually inspect and clean according to operating instructions.
- 3) Contact manufacturer or service center.
- 4) Contact manufacturer or service center.

**WARRANTY-PLUS**  
**Powr-Flite**  
*Value Assurance Package.*

**5 YEARS** on  
One Piece  
Housing

**2 YEARS** on  
Brush Motor

**1 YEAR** on  
Parts & Our  
Workmanship

## WARRANTY

The manufacturer warrants to the original purchaser that products manufactured are free from defects of workmanship and material, provided such goods are installed, operated and maintained in accordance with written manuals or other instructions for a period of 1 year from date of purchase on parts and workmanship. In case you as our customer, meet any trouble with your machine, contact your Powr-Flite® representative who will be happy to be of service to you and will take care of the warranty settlement.

**NOTE:** Alterations and changes made to the machine without written approval of the manufacturer and use of unapproved spare parts will not be covered by warranty.